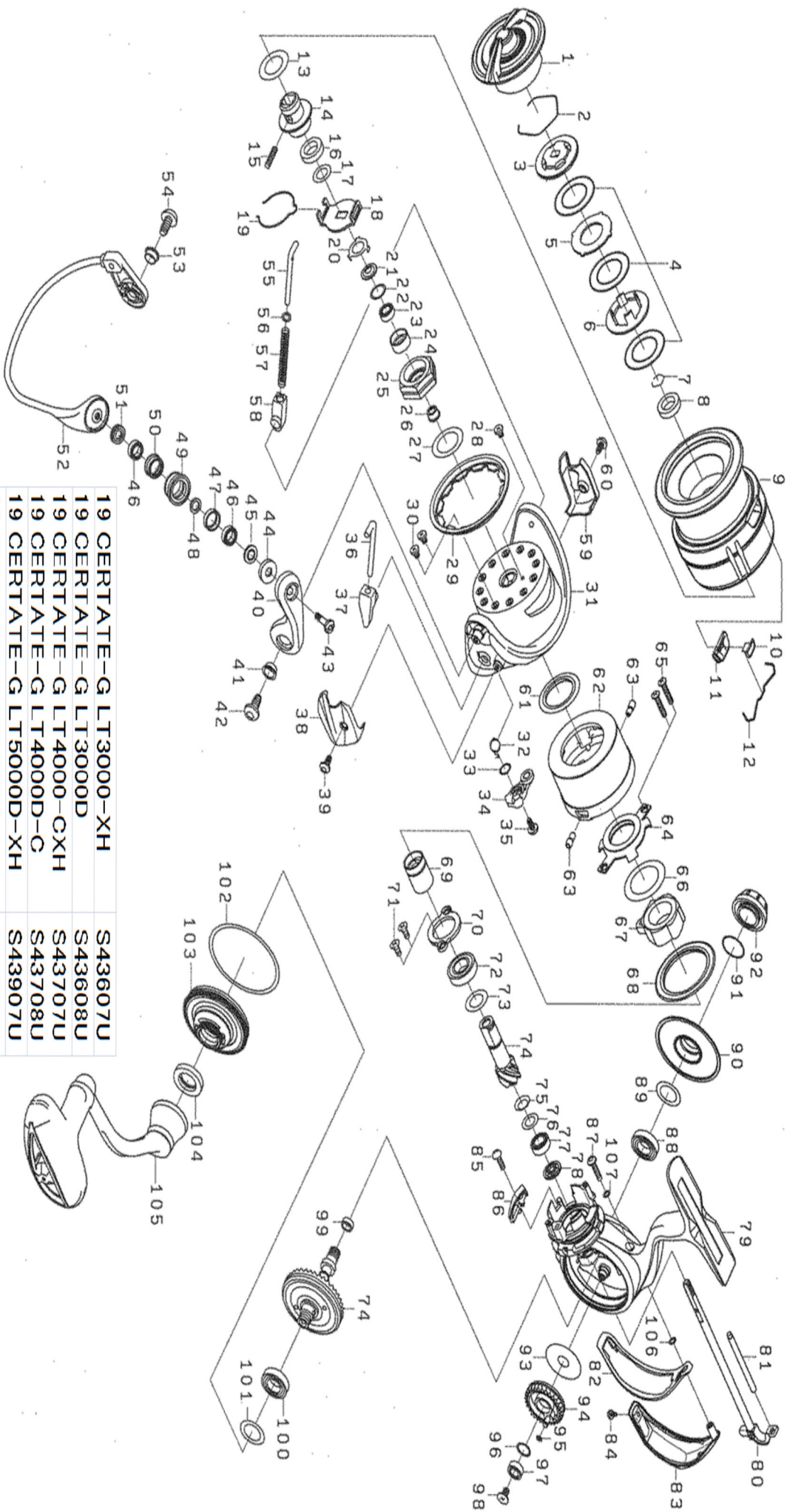




Please quote by part number, not key number when ordering
 spares@daiwaaustralia.com.au PH: 02 8644 8644

2019 CERTATE LT 3000-XH



19 CERTATE-G LT3000-XH	S43607U
19 CERTATE-G LT3000D	S43608U
19 CERTATE-G LT4000-CXH	S43707U
19 CERTATE-G LT4000D-C	S43708U
19 CERTATE-G LT5000D-XH	S43907U
19 CERTATE-G LT5000D	S43908U



Please quote by part number, not key number when ordering
 spares@dalwaaustralia.com.au PH: 02 8644 8644
2019 CERTATE LT 3000-XH

Key No.	Part Number	Description	Key No.	Part Number	Description	Key No.	Part Number	Description
1	6J775201	DRAG KNOB ASSY	36	6J254601	ARM LEVER SHAFT	72	6G279602	PINION BALL BEARING(A)
2	6J556701	DRAG RING	37	6J254701	ARM LEVER SHAFT COLLAR	73	63758500	PINION BEARING(A) WASHER
3	6J556601	DRAG RATCHET	38	6J255103	ARM LEVER HOLDER COVER	74	6Z024673	PINION+DRIVE GEAR SET
4	6J679101	ATD DRAG WASHER(LT3-3pcs)	39	6J255201	ARM LEVER HOLDER COVER SCREW	75	6H814900	PINION BEARING(B) SPRING WASHER
5	6J561201	DRAG DISC WASHER	40	6J254801	ARM LEVER	76	6E096500	PINION BEARING(B) WASHER
6	6J556501	DRAG RIP WASHER	41	6J254901	ARM LEVER SCREW COLLAR	77	6G538007	PINION BALL BEARING(B)
7	6B358702	SPOOL COLLAR RING	42	6J255001	ARM LEVER SCREW	78	6J552001	PINION BEARING(B) COLLAR
8	6J546701	SPOOL COLLAR	43	6J257001	ROLLER CREW	79	6J783002	BODY ASSY
9	6J878801	SPOOL ASSY.(ATD)	44	6J538001	ROLLER MAG COLLAR (B)	80	6J878701	MAIN SHAFT
10	6J558001	LINE STOPPER	45	6J538401	ROLLER MAGNET ASSEMBLY(A)	81	6J774301	OSCILLATING POST
11	6J558101	LINE STOPPER PLATE	46	6J256702	ROLLER BALL BEARING (B)	82	6J783901	REAR CAP PACKING
12	6J314801	LINE STOPPER SPRING	47	6J256601	ROLLER COLLAR(A)	83	6J784001	REAR CAP
13	6J546300	SPOOL WASHER (A)	48	6J256301	ROLLER COLLAR(B)	84	6J774601	REAR CAP SCREW (B)
14	6J549501	SPOOL METAL	49	6J256501	LINE ROLLER	85	6H158201	BAIL KICK COLLAR SCREW
15	6J558201	SPOOL METAL SCREW	50	6J256401	ROLLER COLLAR(A)	86	6J571801	BAIL KICK COLLAR
16	6H624801	SPOOL METAL COLLAR	51	6J537801	ROLLER MAGNET ASSEMBLY(B)	87	6J553603	REAR CAP SCREW (A)
17	6J602201	SPOOL WASHER (B)	52	6J891101	BAIL ASSY	88	6G818902	DRIVE BALL BEARING (A)
18	6J546201	CLICK HOLDER	53	6J254901	BAIL HOLDER SCREW COLLAR	89	6J555501	DRIVE BEARING (A) WASHER
19	6J525101	CLICK REEF SPRING	54	6J255001	BAIL HOLDER SCREW	90	6J783702	ENGINE PLATE(R)
20	6G471501	ROTOR NUT PLATE	55	6G471803	BAIL SHAFT	91	6G399702	HANDLE CAP O-RING
21	6J729101	ROTOR NUT PACKING	56	6G685401	BAIL SHAFT WASHER	92	6J555901	HANDLE CAP
22	63755202	ROTOR NUT WASHER	57	6J255301	BAIL SHAFT SPRING	93	6G610104	OSCILLATING GEAR WASHER
23	6H959602	ROTOR NUT BALL BEARING	58	6G471602	BAIL SHAFT SPRING COLLAR	94	6J618501	OSCILLATING GEAR
24	6J690201	ROTOR NUT BEARING COLLAR	59	6J255903	BAIL HOLDER COVER	95	6G683301	OSCILLATING GEAR O-RING
25	6J253001	ROTOR NUT	60	6J255201	BAIL HOLDER COVER SCREW	96	6H129200	OSCILLATING GEAR WASHER
26	6J808500	ROTOR NUT COLLAR	61	6J554901	STOPPER LEVER PACKING(A)	97	6G686904	OSCILLATING GEAR BALL BEARING
27	63712836	ROTOR NUT WASHER	62	6J774701	STOPPER LEVER	98	6G940403	OSCILLATING GEAR SCREW
28	6H022701	ROTOR NUT SCREW	63	6J782101	STOPPER LEVER SCREW	99	6J552701	DRIVE GEAR RING
29	6J257101	ROTOR COVER	64	6J553802	MAGSEALED PLATE	100	6H739701	DRIVE BALL BEARING (B)
30	6H022701	ROTOR COVER SCREW	65	6H842807	MAGSEALED PLATE SCREW	101	6G613400	DRIVE BEARING (B) WASHER
31	6J254301	ROTOR	66	6H502200	ONEWAY CLUCH WASHER	102	6J571501	ENGINE PLATE PACKING)
32	6J435201	KICK LEVER SPRING	67	6H412602	ONEWAY CLUCH	103	6J783804	ENGINE PLATE(L)
33	6J339500	KICK LEVER WASHER	68	6J553701	STOPPER LEVER PACKING(B)	104	6H866201	HANDLE PACKING
34	6J254401	KICK LEVER ASSY	69	6J774801	CLUCH RING	105	6J784501	HANDLE ASSY
35	6H417701	KICK LEVER SCREW	70	6J552102	PINION BEARING PLATE	106	6G315302	REAR CAP SCREW WASHER(A)
			71	6J552202	PINION BEARING PLATE SCREW	107	6G315301	REAR CAP SCREW WASHER(B)