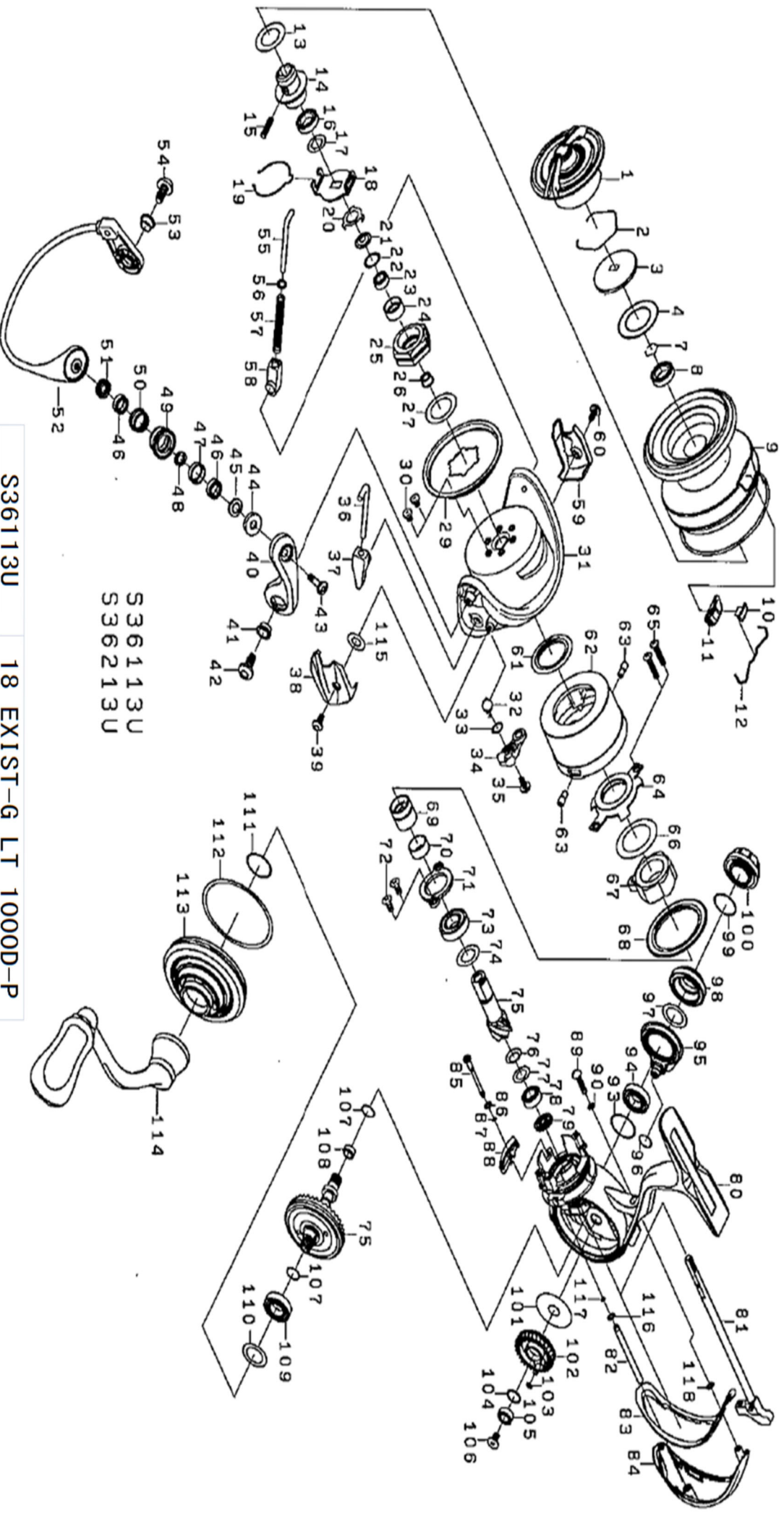




Please quote by part number, not key number when ordering
 spares@daiwaaustralia.com.au PH: 02 8644 8644

2018 EXIST LT 1000D-P



S36113U
 S36213U

S36113U	18 EXIST-G LT 1000D-P
S36213U	18 EXIST-G LT 2000D-P



Please quote by part number, not key number when ordering
 spares@daiwavaustralia.com.au PH: 02 8644 8644

2018 EXIST LT 1000D-P

Key No.	Part Number	Description	Key No.	Part Number	Description	Key No.	Part Number	Description
1	6I615301	DRAG KNOB	41	6I254901	ARM LEVER SCREW COLLAR	79	6I588201	PINION BEARING COLLAR
2	6I556701	DRAG RING	42	6I255001	ARM LEVER SCREW	80	6I733701	BODY ASSY
3	6I757501	DRAG DISC WASHER	43	6I257001	ROLLER SCREW	81	6I614001	MAIN SHAFT
4	6I678901	ATD DRAG WASHER(1pac-1pcs)	44	6I538001	ROLLER MAG COLLAR	82	6I608901	OSCILLATING POST
7	6B358702	BEARING RETAINER	45	6I538401	ROLLER MAGNET ASSY(A)	83	6I589001	REAR CAP PACKING
8	6G212503	SPOOL BALL BEARING	46	6I256702	ROLLER BALL BEARING	84	6I589101	REAR CAP
9	6I733901	SPOOL ASSY (2-12)	47	6I256601	ROLLER COLLAR (A)	85	6I609104	BAIL KICK COLLAR SCREW
10	6I558001	LINE STOPPER	48	6I256301	ROLLER COLLAR (B)	86	6I718501	BAIL KICK COLLAR WASHER
11	6I563601	LINE STOPPER PLATE	49	6I256502	LINE ROLLER	87	6I718601	BAIL KICK COLLAR O-RING
12	6I314801	LINE STOPPER SPRING	50	6I256401	ROLLER COLLAR (C)	88	6I553501	BAIL KICK COLLAR
13	6I546300	SPOOL WASHER (A)	51	6I537801	ROLLER MAGNET ASSY(B)	89	6I553601	REAR CAP SCREW
14	6I549501	SPOOL METAL	52	6I614601	BAIL ASSY	90	6G315301	REAR CAP SCREW WASHER(A)
15	6I558201	SPOOL METAL SCREW	53	6I254901	BAIL HOLDER SCREW COLLAR	93	6I554101	DRIVE BEARING (B) WASHER
16	6G522705	SPOOL METAL BALL BEARING	54	6I255001	BAIL HOLDER SCREW	94	6I046802	DRIVE BALL BEARING (B)
17	6I602201	SPOOL WASHER (B)	55	6G471803	BAIL SPRING SHAFT	95	6I587901	SET PLATE
18	6I546201	CLICK HOLDER	56	6G685401	BAIL SPRING SHAFT WASHER	96	6I551301	SET PLATE O-RING
19	6I525101	CLICK LEAF SPRING	57	6I304801	BAIL SPRING	97	6I555501	COVER WASHER
20	6G471501	ROTOR NUT PLATE	58	6G471601	BAIL SPRING SHAFT HOLDER	98	6I552802	SIDE COVER (R)
21	6I729101	ROTOR NUT PACKING	59	6I287303	BAIL HOLDER COVER	99	6G399702	HANDLE CAP O-RING
22	63755202	ROTOR NUT BEARING WASHER	60	6I255201	COVER SCREW	100	6I555901	HANDLE CAP
23	6H959602	ROTOR NUT BALL BEARING	61	6I554901	ROTOR PACKING	101	6I551401	OSCILLATING GEAR WASHER
24	6I690101	ROTOR NUT COLLAR	62	6I554501	STOPPER CAP ASSY	102	6I551501	OSCILLATING GEAR
25	6I305201	ROTOR NUT	63	6I554701	STOPPER CAP SCREW	103	6G683301	OSCILLATING GEAR O-RING
26	6I555001	ROTOR NUT BEARING COLLAR	64	6I553801	MAGSEALED PLATE	104	6H129200	OSCILLATING GEAR WASHER
27	63727601	ROTOR NUT WASHER	65	6H842805	MAGSEALED PLATE SCREW	105	6G686904	OSCILLATING GEAR BALL BEARING
29	6I287401	ROTOR COVER	66	6H502200	MAGSEALED PLATE WASHER	106	6G940401	OSCILLATING GEAR SCREW
30	6H022701	ROTOR COVER SCREW	67	6H412602	ONEWAY CLUCH	107	6I731701	DRIVE GEAR O-RING
31	6I286701	ROTOR	68	6I553701	STOPPER CAP PACKING	108	6I552701	DRIVE GEAR RING
32	6I435101	KICK LEVER SPRING	69	6I554801	CLUCH RING	109	6I046802	DRIVE BALL BEARING (A)
33	6I339500	KICK LEVER WASHER	70	6I536202	CLUCH RING COLLAR	110	6G317500	DRIVE BEARING WASHER
34	6I304701	KICK LEVER ASSY	71	6I552101	PINION BEARING PLATE	111	6I588901	BODY COVER O-RING (A)
35	6H417701	KICK LEVER SCREW	72	6I552201	PLATE SCREW	112	6I588801	BODY COVER O-RING (B)
36	6I254601	ARM LEVER SHAFT	73	6G279602	PINION BALL BEARING (A)	113	6I733801	BODY COVER (L)
37	6I254701	ARM LEVER SHAFT HOLDER	74	63758500	PINION BEARING WASHER (A)	114	6I615601	HANDLE ASSY
38	6I287003	ARM LEVER SPRING COVER	75	6Z023806	PINION + DRIVE GEAR SET	115	6F306402	COVER SCREW WASHER
39	6I255201	COVER SCREW	76	6H814900	PINION SPRING WASHER	116	6G712401	OSCILLATING POST WASHER
40	6I519701	ARM LEVER	77	6E096500	PINION BEARING WASHER (B)	117	6G683301	OSCILLATING POST O-RING
			78	6G466205	PINION BALL BEARING (B)	118	6G315301	REAR CAP SCREW WASHER (B)