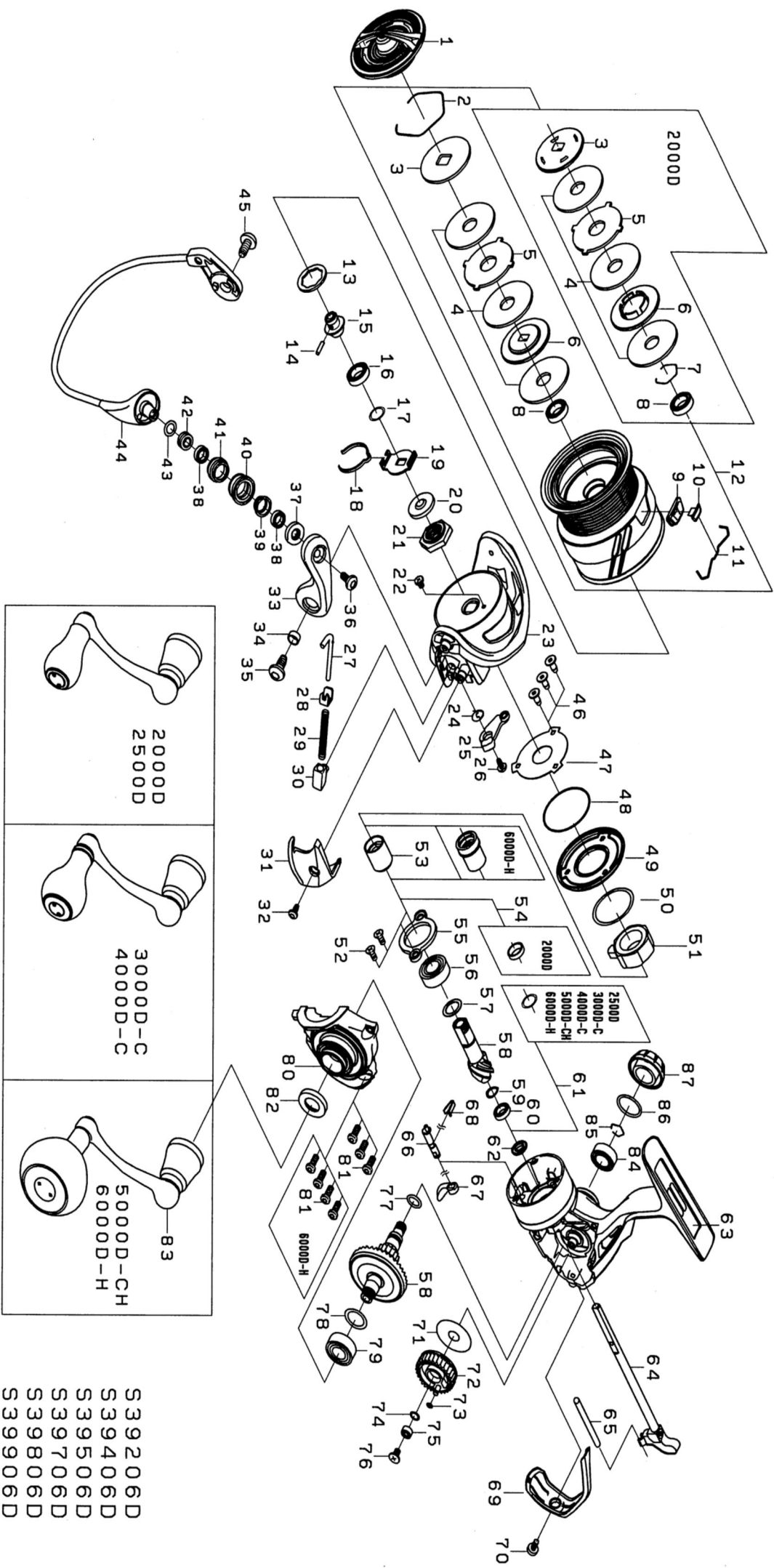




Please quote by part number, not key number when ordering  
 spares@daiwaaustralia.com.au PH: 02 8644 8644

# 2017 SOL III LT 2000D



- S 39206D
- S 39406D
- S 39506D
- S 39706D
- S 39806D
- S 39906D



Please quote by part number, not key number when ordering

spares@daiwaustralia.com.au PH: 02 8644 8644

## 2017 SOL III LT 2000D

Key No.	Part Number	Description	Key No.	Part Number	Description
1	6J560501	DRAG KNOB	45	6H431201	BAIL HOLDER SCREW
2	6J547101	DRAG RING	46	6J429301	MAGSEALED PLATE SCREW
3	6J563801	DRAG DISC WASHER	47	6J675201	MAGSEALED PLATE
4	6J678801	ATD DRAG WASHER	48	6J354801	MAGSEALED PLATE ORING
5	6J546901	DRAG LIP WASHER	49	6J445901	MAGSEALED CAP
6	6J563701	DRAG DISC WASHER	50	6J639900	ONEWAY CLUTCH WASHER
7	6B358701	DRAG BALL BEARING RING	51	6J388401	ONEWAY CLUTCH
8	6G212503	DRAG BALL BEARING	52	6G997301	PINION BEARING PLATE SCREW
9	6J563601	LINE STOPPER PLATE	53	6J536101	CLUTCH RING
10	6J558001	LINE STOPPER	54	6J536201	CLUTCH RING COLLAR
11	6J314801	LINE STOPPER SPRING	55	6H442202	PINION BEARING PLATE
12	6J669001	SPOOL ASSEMBLY (2~12)	56	6G467302	PINION BALL BEARING (A)
13	6J546300	SPOOL WASHER	57	63758500	PINION BEARING WASHER (A)
14	6J558201	SPOOL METAL SCREW	58	6Z023684	PINION + DRIVE GEAR SET
15	6J564101	SPOOL METAL	59	6J683001	PINION BEARING SPRING WASHER (B)
16	6E306801	SPOOL METAL BEARING	60	6H959601	PINION BALL BEARING (B)
17	6J602201	CLICK HOLDER WASHER	61	-	-
18	6J525101	CLICK LEAF SPRING	62	6J387701	PINION COLLAR
19	6J546201	CLICK HOLDER	63	6J606901	BODY ASSY
20	6H986901	ROTOR NUT PACKING	64	6J559701	MAIN SHAFT
21	6H961101	ROTOR NUT	65	6J526101	OSCILLATING POST
22	6H022701	ROTOR NUT SCREW	66	6H595501	STOPPER CAM
23	6H974325	ROTOR	67	6H595401	STOPPER LEVER
24	6H443301	KICK LEVER SPRING	68	6H697801	STOPPER CAM LEAF SPRING
25	6H443401	KICK LEVER ASSY	69	6J524901	REAR CAP
26	6H417701	KICK LEVER SCREW	70	6J389001	REAR CAP SCREW
27	6H443601	ARM LEVER SHAFT	71	6H607902	OSCILLATING GEAR WASHER
28	6H576101	ARM LEVER SHAFT PLATE	72	6J535801	OSCILLATING GEAR
29	6H442401	ARM LEVER SHAFT SPRING	73	6G683301	OSCILLATING GEAR ORING
30	6H414301	ARM LEVER SHAFT HOLDER	74	6H129200	OSCILLATING GEAR BALL BEARING WASHER
31	6H974401	ARM LEVER SP COVER	75	6G469005	OSCILLATING GEAR BALL BEARING
32	6H431301	ARM LEVER SP COVER SCREW	76	6G997001	OSCILLATING GEAR BALL BEARING SCREW
33	6H960124	ARM LEVER	77	6G670501	DRIVE GEAR ORING
34	6H962401	ARM LEVER COLLAR	78	63758500	DRIVE WASHER
35	6H431201	ARM LEVER SCREW	79	6G467305	DRIVE GEAR BALL BEARING (A)
36	6H697701	ROLLER SCREW	80	6J607501	BODY COVER ASSY
37	6H744001	ROLLER MAGSEALED (A)	81	6J389801	BODY COVER SCREW
38	6G686903	ROLLER BALL BEARING	82	6J130201	HANDLE CAP PACKING
39	6H743901	ROLLER BALL BEARING COLLAR (A)	83	6J607701	HANDLE ASSY
40	6H743801	LINE ROLLER	84	6G522705	DRIVE GEAR BALL BEARING (B)
41	6H743701	ROLLER BALL BEARING COLLAR (B)	85	6G472401	DRIVE BEARING RING
42	6H743401	ROLLER MAGSEALED (B)	86	6G162401	HANDLE CAP ORING
43	6B411700	ROLLER MAGSEALED WASHER	87	6J389701	HANDLE CAP
44	6J607601	BAIL ASSY			