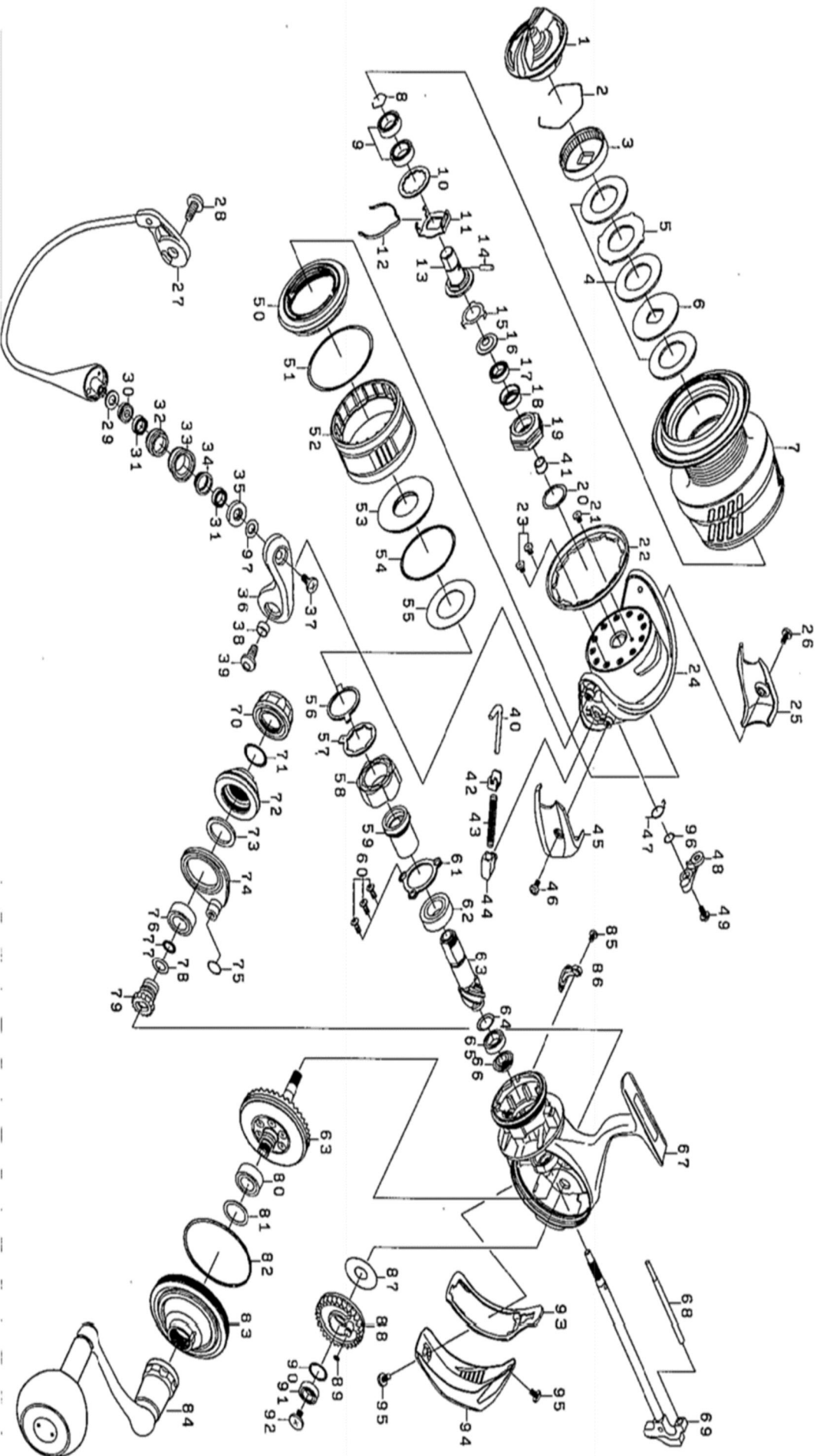




Please quote by part number, not key number when ordering  
spares@daiwaaustralia.com.au PH: 02 8644 8644

# 2017 SALTIGA BJ 4000





Please quote by part number, not key number when ordering  
spares@daiwaaustralia.com.au PH: 02 8644 8644

## 2017 SALTIGA BJ 4000

Key No.	Part Number	Description	Key No.	Part Number	Description
1	6J458401	DRAG KNOB	49	6H417701	KICK LEVER SCREW
2	6F710001	DRAG RING	50	6J301801	INFINITE COVER (A)
3	6F895305	DRAG RATCHET	51	6H176501	INFINITE COVER O-RING
4	6J398801	ATD DRAG WASHER ASS( 3pcs )	52	6J301702	MAGSEALED CAP
5	6F644702	DRAG LIP WASHER	53	6H619301	MAGSEALED PLATE
6	6G165903	DRAG DISC WASHER	54	6H452801	MAGSEALED PLATE O-RING
7	6J457101	SPOOL ASSY	55	6H619201	MAGSEALED PLATE WASHER
8	6G525101	SPOOL METAL RING	56	6H690201	ONEWAY CLUTCH PLATE(A)
9	6G431004	SPOOL METAL BALL BEARING	57	6J541901	ONEWAY CLUTCH PLATE(B)
10	6G903902	SPOOL WASHER	58	6G314501	ONEWAY CLUTCH
11	6G694001	CLICK HOLDER	59	6H782302	CLUTCH RING
12	6H737101	CLICK LEAF SPRING	60	6E134508	PINION BEARING PLATE SCREW
13	6J302801	SPOOL METAL	61	6G522901	PINION BEARING PLATE
14	6F643601	SPOOL METAL PIN	62	6G522803	PINION BALL BEARING(A)
15	6G524801	ROTOR NUT PLATE	63	6Z023235	PINION + DRIVGE GEAR UNIT
16	6H621501	ROTOR NUT PACKING	64	6G578501	SPRING WASHER
17	6G212503	ROTOR NUT BALL BEARING	65	6G522705	PINION BALL BEARING (B)
18	6J302501	ROTOR NUT COLLAR	66	6H618001	PINION COLLAR
19	6J302401	ROTOR NUT	67	6J454701	BODY ASSY
20	6G645603	ROTOR NUT WASHER	68	6H639301	OSCILLATING POST
21	6H022701	ROTOR NUT SCREW	69	6J300601	MAIN SHAFT
22	6J302301	ROTOR COVER	70	6J303301	HANDLE CAP
23	6H022701	ROTOR COVER SCREW	71	6G162401	HANDLE CAP ORING
24	6J302101	ROTOR	72	6J455001	DRIVE BEARING COVER
25	6J302201	BAIL HOLDER COVER	73	6J301301	DRIVE BEARING COLLAR
26	6H431301	COVER SCREW	74	6J300303	SETPLATE
27	6J455201	BAIL ASSY	75	6J300401	SETPLATE O-RING
28	6H431201	BAIL HOLDER SCREW	76	6J040001	DRIVE BALL BEARING
29	6B411703	ROLLAR WASHER	77	6J185701	IDLE GEAR O-RING(A)
30	6H743401	ROLLAR MAG COLLAR(B)	78	6G800701	IDLE GEAR O-RING(B)
31	6G686903	ROLLAR BALL BEARING	79	6J300501	IDLE GEAR
32	6H743701	ROLLAR COLLAR (B)	80	6J040001	DRIVE BALL BEARING
33	6H743801	LINE ROLLER	81	6G645601	DRIVE BEARING WASHER
34	6H743901	ROLLAR COLLAR (A)	82	6H502601	BODY COVER O-RING
35	6H744001	ROLLAR MAG COLLAR(A)	83	6J455103	BODY COVER
36	6H960121	ARM LEVER	84	6J455501	HANDLE ASSY
37	6H744201	ROLLAR SCREW	85	6H455407	BAIL KICK COLLAR SCREW
38	6H962401	ARM LEVER SCREW COLLAR	86	6H906201	BAIL KICK COLLAR
39	6H431201	ARM LEVER SCREW	87	6G644203	OSCILLATING GEAR (A) WASHER
40	6H640601	ARM LEVER SHAFT	88	6J304201	OSCILLATING GEAR (A)
41	6J401401	ROTOR NUT BEARING COLLAR	89	6B853101	OSCILLATING GEAR (A) O-RING
42	6H576101	ARM LEVER SHAFT PLATE	90	6G522101	WASHER
43	6H640701	ARM LEVER SPRING	91	6G467102	OSCILLATING GEAR BALL BEARING
44	6J089401	ARM LEVER SPRING HOLDER	92	6H272202	OSCILLATING GEAR SCREW
45	6H994601	ARM LEVER SPRING COVER	93	6J301901	REAR CAP PACKING
46	6H431301	COVER SCREW	94	6J302001	REAR CAP
47	6H413601	KICK LEVER SPRING	95	6H753302	REAR CAP SCREW
48	6H994401	KICK LEVER ASSY	96	6J339502	KICK LEVER WASHER
			97	6J339502	ROLLAR MAG COLLAR(A) WASHER