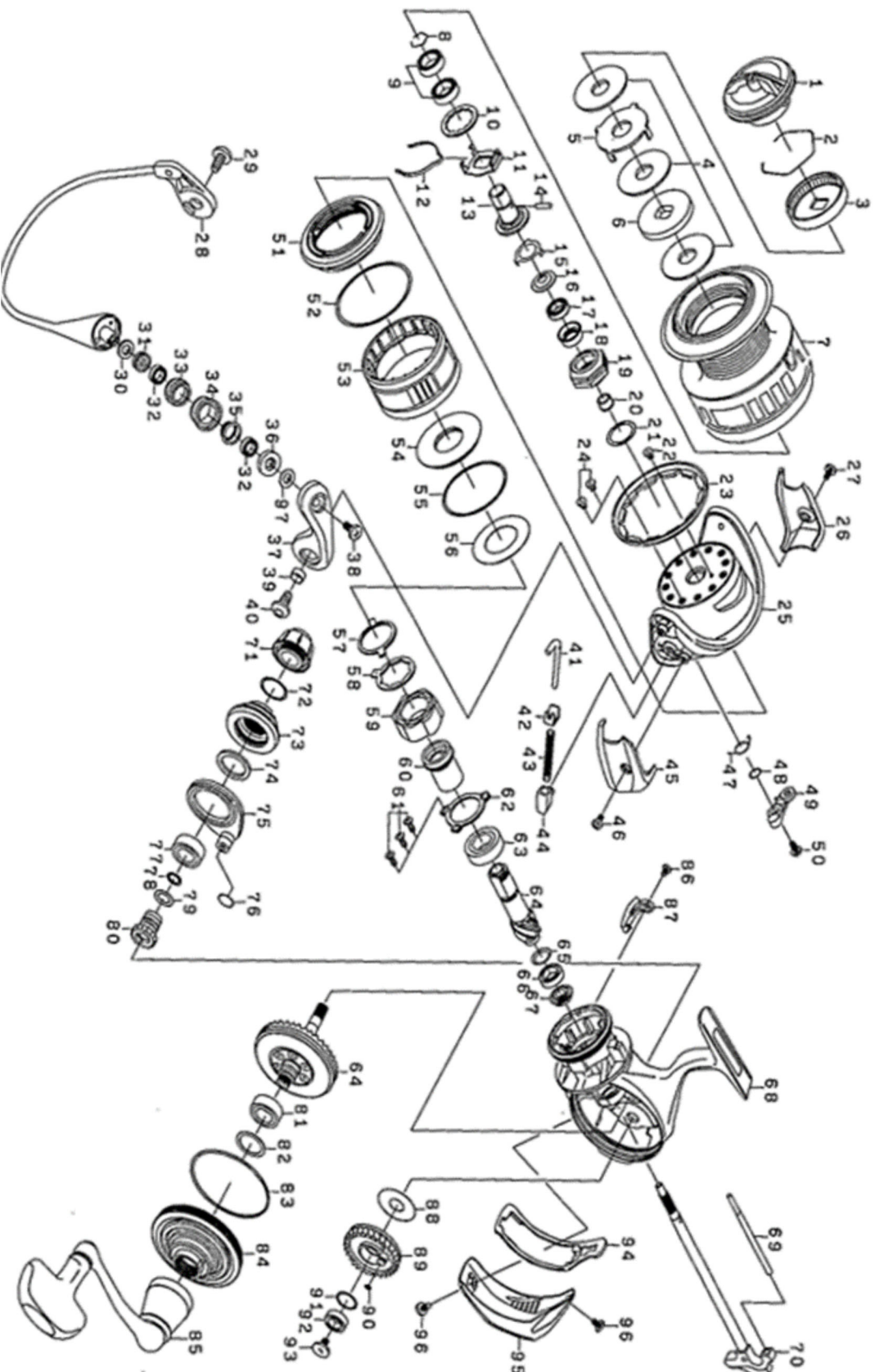




Please quote by part number, not key number when ordering  
spares@daiwaaustralia.com.au PH: 02 8644 8644

# 2017 MORETHAN 3500



S25719J

DAIWA FISHING.COM.AU



Please quote by part number, not key number when ordering  
 spares@daiwaaustralia.com.au PH: 02 8644 8644

## 2017 MORETHAN 3500

Key No.	Part Number	Description	Key No.	Part Number	Description	Key No.	Part Number	Description
1	6I465301	DRAG KNOB	35	6H743901	ROLLER COLLAR(A)	69	6H639301	OSCILLATING POST
2	6F710001	DRAG RING	36	6H744001	ROLLER MAG COLLAR(A)	70	6J300601	MAIN SHAFT
3	6F895302	DRAG RATCHET	37	6H960122	ARM LEVER	71	6J303301	HANDLE CAP
4	6J398601	DRAG WASHER(ATD )	38	6H697701	ROLLER SCREW	72	6G162401	HANDLE CAP O-RING
5	6F627301	DRAG LIP WASHER	39	6H962401	ARM LEVER SCREW COLLAR	73	6J301403	DRIVE BEARING COVER
6	6H714001	DRAG DISC WASHER	40	6H431201	ARM LEVER SCREW	74	6J301301	DRIVE BEARING COLLAR
7	6I521301	SPOOL (2-7)	41	6H640601	ARM LEVER SHAFT	75	6J300304	SETPLATE
8	6G525101	SPOOL METAL RING	42	6H576101	ARM LEVER SHAFT PLATE	76	6J300401	SETPLATE O-RING
9	6G431004	SPOOL BALL BEARING	43	6H640701	ARM LEVER SPRING	77	6J040001	DRIVE BALL BEARING
10	6G903900	SPOOL WASHER	44	6J089401	ARM LEVER SPRING HOLDER	78	6I185701	IDLE GEAR O-RING ( A )
11	6G694001	CLICK HOLDER	45	6H994601	ARM LEVER SPRING COVER	79	6G800701	IDLE GEAR O-RING ( B )
12	6H737101	CLICK LEAF SPRING	46	6H431301	COVER SCREW	80	6J300501	IDLE GEAR
13	6J302801	SPOOL METAL	47	6H413601	KICK LEVER SPRING	81	6J040001	DRIVE BALL BEARING
14	6F643601	SPOOL METAL PIN	48	6J339500	KICK LEVER WASHER	82	6G645600	DRIVE BEARING WASHER
15	6G524801	ROTOR NUT PLATE	49	6H994401	KICK LEVER	83	6H502602	BODY COVER O-RING
16	6H621501	ROTOR NUT PACKING	50	6H417701	KICK LEVER SCREW	84	6J520801	BODY COVER
17	6G212503	ROTOR NUT BALL BEARING	51	6J301801	INFINITE COVER ( A )	85	6I464601	HANDLE ASS
18	6J302501	ROTOR NUT COLLAR	52	6H176501	INFINITE COVER O-RING	86	6H455407	BALL KICK COLLAR SCREW
19	6J302401	ROTOR NUT	53	6J301703	INFINITE COVER ( B )	87	6H775701	BALL KICK COLLAR
20	6I401401	ROTOR NUT BEARING COLLAR	54	6H619301	MAGSEALED PLATE	88	6G644203	OSCILLATING GEAR ( A )WASHER
21	6G645603	ROTOR NUT WASHER	55	6H452801	MAGSEALED PLATE O-RING	89	6J304201	OSCILLATING GEAR ( A )
22	6H022701	ROTOR NUT SCREW	56	6H619201	MAGSEALED PLATE WASHER	90	6B853101	OSCILLATING GEAR ( A ) O-RING
23	6J302301	ROTOR COVER	57	6H690201	ONEWAY CLUTCH PLATE( A )	91	6G522100	WASHER
24	6H022701	ROTOR COVER SCREW	58	6J541901	ONEWAY CLUTCH PLATE( B )	92	6G467102	OSCILLATING GEAR BALL BEARING
25	6J302102	ROTOR	59	6G314501	ONEWAY CLUTCH	93	6H272202	OSCILLATING GEAR SCREW
26	6J302201	BALL HOLDER COVER	60	6H782302	CLUTCH RING	94	6J301901	HANDLE CAP PACKING
27	6H431301	COVER SCREW	61	6E134508	PINION BEARING PLATE SCREW	95	6J302001	REAR CAP
28	6I455201	BALL ASS	62	6G522901	PINION BEARING PLATE	96	6H753302	REAR CAP SCREW
29	6H431201	BALL HOLDER SCREW	63	6G522803	PINION BALL BEARING(A)	97	6J339500	WASHER
30	6B411700	ROLLER WASHER	64	6Z023235	PINION + DRIVE GEAR UNIT	200	6B411700	HANDLE KNOB WASHER
31	6H743401	ROLLER MAG COLLAR(B)	65	6G578501	SPRING WASHER	201	6G469007	HANDLE KNOB COLLAR
32	6G686903	ROLLER BALL BEARING	66	6G522705	PINION BALL BEARING(B)	202	6J013803	HANDLE KNOB
33	6H743701	ROLLER COLLAR(B)	67	6H618001	PINION COLLAR	203	6B679308	HANDLE KNOB SCREW
34	6H743801	LINE ROLLER	68	6J464301	BODY	204	6H476301	HANDLE KNOB CAP