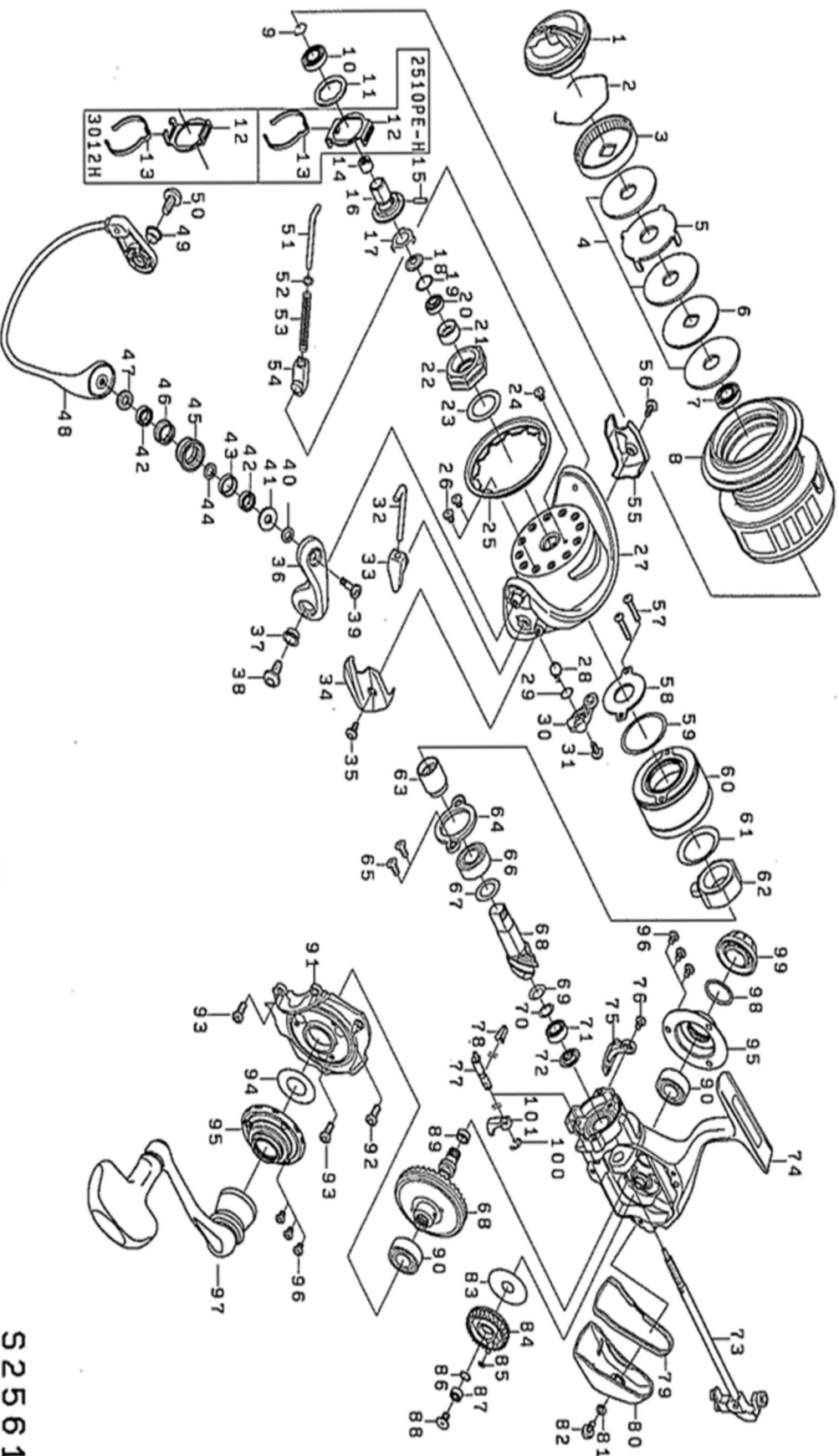




Please quote by part number, not key number when ordering  
spares@daiwaaustralia.com.au PH: 02 8644 8644  
**2017 MORETHAN 2510PE-H**



S25619J

DAIWA FISHING.COM.AU



Please quote by part number, not key number when ordering  
 spares@daiwaaustralia.com.au PH: 02 8644 8644  
**2017 MORETHAN 2510PE-H**

Key No.	Part Number	Description	Key No.	Part Number	Description	Key No.	Part Number	Description
1	6I463301	DRAG KNOB	37	6I254901	ARM LEVER SCREW COLLAR	72	6H411201	PINION COLLAR
2	6F710001	DRAG RING	38	6I255001	ARM LEVER SCREW	73	6I252501	MAIN SHAFT
3	6F895307	DRAG RATCHET	39	6I257001	ROLLER SCREW	74	6I029901	BODY
4	6I398301	DRAG WASHER (ATD )	40	6F897101	ROLLER WASHER	75	6H412201	BALL KICK COLLAR
5	6F635201	DRAG LIP WASHER	41	6I256801	ROLLER MAG COLLAR(A)	76	6H455406	BALL KICK COLLAR SCREW
6	6F635101	DRAG DISC WASHER	42	6I256701	ROLLER BALL BEARING	77	6H410001	STOPPER CAM
7	6G818902	SPOOL BALL BEARING	43	6I256601	ROLLER COLLAR(A)	78	6H410201	STOPPER CAM LEAF SPRING
8	6I520901	SPOOL (2-8)	44	6I256301	ROLLER COLLAR(B)	79	6H413301	REAR CAP PACKING
9	6G472401	SPOOL METAL	45	6I256501	LINE ROLLER	80	6H413403	REAR CAP
10	6G818902	SPOOL METAL BALL BEARING	46	6I256401	ROLLER COLLAR(C)	81	6H352801	REAR CAP WASHER
11	6H806300	SPOOL WASHER	47	6I256001	ROLLER MAG COLLAR(B)	82	6H512401	REAR CAP SCREW
12	6H416001	CLICK HOLDER	48	6I255401	BALL ASSEMBLY	83	6H607901	OSCILLATING GEAR WASHER
13	6H416101	CLICK LEAF SPRING	49	6I254901	BALL HOLDER SCREW COLLAR	84	6H410401	OSCILLATING GEAR
14	6I180801	SPOOL METAL NUT	50	6I255001	BALL HOLDER SCREW	85	6G683301	OSCILLATING GEAR O-RING
15	6G375001	SPOOL METAL PIN	51	6G471803	BALL SHAFT	86	6H129200	WASHER
16	6H415901	SPOOL METAL	52	6G685401	BALL SHAFT WASHER	87	6G469002	OSCILLATING GEAR BALL BEARING
17	6G471501	ROTOR NUT PLATE	53	6I255301	BALL SHAFT SPRING	88	6G940402	OSCILLATING GEAR SCREW
18	6H415701	ROTOR NUT PACKING	54	6G471602	BALL SHAFT SPRING HOLDER	89	6H455601	DRIVE GEAR O-RING
19	63755201	WASHER	55	6I255901	BALL HOLDER COVER	90	6I030302	DRIVE BALL BEARING
20	6I253201	ROTOR NUT BALL BEARING	56	6I255201	BALL HOLDER COVER SCREW	91	6H412304	BODY COVER
21	6I253101	ROTOR NUT COLLAR	57	6H413201	MAGSEALED PLATE SCREW	92	6H431002	BODY COVER SCREW ( A )
22	6I253001	ROTOR NUT	58	6I354401	MAGSEALED PLATE	93	6H431001	BODY COVER SCREW ( B )
23	63712824	ROTOR NUT WASHER	59	6I354801	MAGSEALED PLATE O-RING	94	6H412400	DRIVE WASHER
24	6H022701	ROTOR NUT SCREW	60	6I374602	MAGSEALED CAP	95	6I520501	DRIVE BEARING COVER
25	6I257101	ROTOR COVER	61	6H979201	ONEWAY CLUTCH WASHER	96	6H740304	DRIVE BEARING COVER SCREW
26	6H022701	ROTOR COVER SCREW	62	6H412601	ONEWAY CLUTCH	97	6I462601	HANDLE
27	6I254302	ROTOR	63	6H412501	CLUTCH RING	98	6G399702	HANDLE CAP O-RING
28	6I435201	KICK LEVER SPRING	64	6H739101	PINION BEARING PLATE	99	6H417201	HANDLE CAP
29	6I339500	KICK LEVER WASHER	65	6E134501	PINION BEARING PLATE SCREW	100	6B339801	STOPPER RETAINER
30	6I254401	KICK LEVER	66	6G535105	PINION BALL BEARING(A)	101	6H410109	STOPPER LEVER
31	6H417701	KICK LEVER SCREW	67	6H411401	PINION BALL BEARING(A) WASHER	200	6B411703	HANDLE KNOB WASHER
32	6I254601	ARM LEVER SHAFT	68	6Z023366	PINION + DRIVE GEAR UNIT	201	6H850401	HANDLE KNOB COLLAR
33	6I254701	ARM LEVER SHAFT HOLDER	69	6H411300	SPRING WASHER	202	6G701304	HANDLE KNOB
34	6I255101	ARM LEVER COVER	70	6E096500	PINION BALL BEARING(B) WASHER	203	6B679308	HANDLE KNOB SCREW
35	6I255201	COVER SCREW	71	6G538007	PINION BALL BEARING(B)	204	6H476301	HANDLE KNOB CAP
36	6I254802	ARM LEVER						