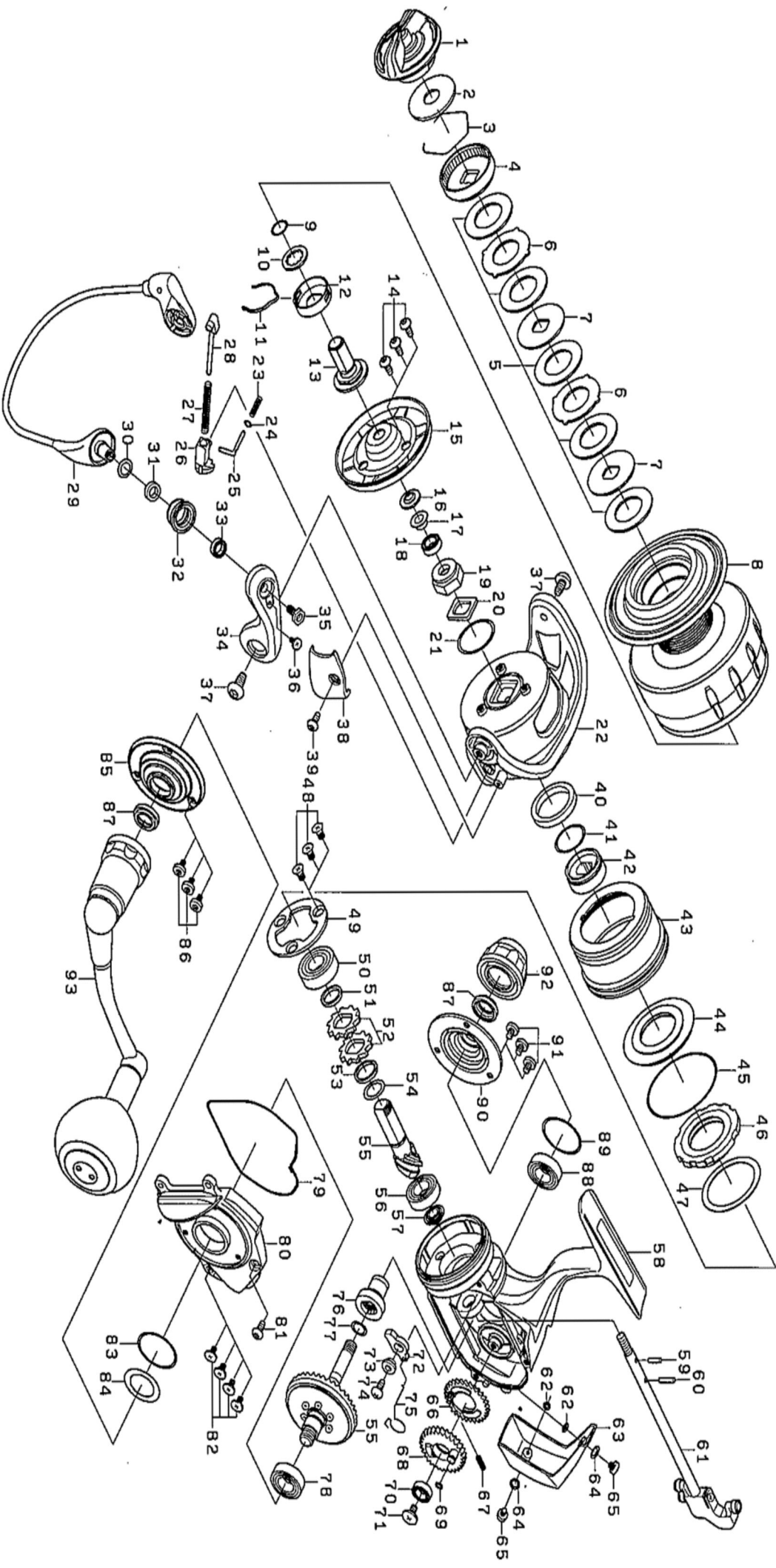




Please quote by part number, not key number when ordering  
spares@daiwaaustralia.com.au PH: 02 8644 8644

# 2016 CATALINA 6500H





Please quote by part number, not key number when ordering  
spares@daiwaaustralia.com.au PH: 02 8644 8644

## 2016 CATALINA 6500H

Key No.	Part Number	Description	Key No.	Part Number	Description
1	6J216702	DRAG KNOB	51	6H683501	PINION BEARING(A)COLLAR
2	6H616701	DRAG KNOB WASHER	52	6E262701	RACHET
3	6F710001	DRAG KNOB RING	53	63727600	RACHET WASHER(A)
4	6G165603	DRAG KNOB RACHET	54	63727603	RACHET WASHER(B)
5	6H247202	ATD DRAG WASHER	55	6Z021716	PINION+DRIVE GEAR SET
6	6G165902	DRAG LIP WASHER	56	6B861703	PINION BALL BEARING(B)
7	6G162702	DRAG DISK WASHER	57	6H683001	PINION BEARING(B)COLLAR
8	6J331001	SPOOL ASSY(2-7)	58	6J330601	BODY ASSY
9	6G163201	SPOOL METAL RING	59	6G339301	SPOOL METAL PIN
10	6G341500	SPOOL WASHER	60	6G338901	MAIN SHAFT PIN
11	6G341401	CLICK LEAR SPRING	61	6J188902	MAIN SHAFT
12	6G341301	CLICK HOLDER	62	63754102	REAR CAP SCREW(?)WASHER(A)
13	6H287701	SPOOL METAL RING	63	6H858301	REAR CAP
14	6H503901	ROTOR COVER SCREW	64	6E096505	REAR CAP SCREW(?)WASHER(B)
15	6H685701	ROTOR COVER	65	6H798201	REAR CAP SCREW
16	6H685601	ROTOR NUT PACKING	66	6G334901	OSCILLATING GEAR(A)
17	6H685501	ROTOR NUT COLLAR	67	6G157401	OSCILLATING GEAR(A)SPRING
18	6B861702	ROTOR NUT BALL BEARING	68	6H682601	OSCILLATING GEAR(B)SPRING
19	6H685402	ROTOR NUT	69	6G213001	OSCILLATING GEAR(B)O RING
20	6H685301	ROTOR NUT PLATE	70	6B861702	OSCILLATING GEAR BALL BEARING
21	6F274501	ROTOR NUT O RING	71	6H347101	OSCILLATING GEAR SCREW
22	6H684503	ROTOR	72	6H683601	STOPPER
23	6H782801	ROTOR BRAKE SPRING	73	6G336201	STOPPER COLLAR
24	6E272501	ROTOR BRAKE WASHER	74	63516413	STOPPER SCREW
25	6H684601	ROTOR BRAKE SHAFT	75	6G336601	STOPPER SPRING
26	6H684701	ARM LEVER SPRING COLLAR	76	6G334703	OSCILLATING GEAR(C)
27	6G418101	ARM LEVER SPRING	77	6G336701	OSCILLATING GEAR(C)O RING
28	6G337301	ARM LEVER SHAFT	78	6G426301	DRIVE BALL BEARING
29	6H684901	BAIL ASSY	79	6H683901	BODY COVER PACKING
30	6E096500	ROLLER WASHER	80	6H683818	BODY COVER
31	6J042801	ROLLER COLLAR	81	6G160101	BODY COVER SCREW(A)
32	6J042901	LINE ROLLER	82	6H505201	BODY COVER SCREW(B)
33	6J019302	ROLLER BALL BEARING	83	6H036301	DRIVE BALL BEARING O RING
34	6H503605	ARM LEVER	84	6H684000	DRIVE WASHER
35	6H504701	ROLLER SCREW	85	6J330701	DRIVER BEARING COVER(L)
36	6H842801	ROLLER LOCK SCREW	86	6G946801	DRING BEARING COVER SCREW
37	6H503701	HOLDER SCREW	87	6H685801	HANDLE PACKING
38	6H684801	ARM LEVER SPRING COVER	88	6G426301	DRIVE BALL BEARING
39	6H503901	COVER SCREW	89	6H036301	DRIVE BALL BEARING O RING
40	6H687201	CLUTCH RING WASHER	90	6J330701	DRIVE BEARING COVER(R)
41	6G338401	CLUTCH RING O RING	91	6G946801	DRIVE BEARING COVER SCREW
42	6H688601	CLUTCH RING O RING	92	6H686301	HANDLE CAP
43	6J216201	INFINIT COVER	93	6J330901	HANDLE ASSY
44	6H535301	MAGSEALED PLATE	201	6F648301	HANDLE KNOB COLLAR
45	6H502601	MAGSEALED PLATE O RING	202	6H425507	HANDLE KNOB
46	6F765401	ONE WAY CLUTCH	203	6G466206	HANDLE BALL BEARING
47	6G158101	ONE WAY CLUTCH WASHER	204	6E454003	HANDLE KNOB SCREW
48	6F206902	PLATE SCREW	205	6H318307	HANDLE KNOB CAP COLLAR
49	6H501901	PINION BEARING(A)PLATE	206	6J327101	HANDLE KNOB CAP(WITH O RING)
50	6G426301	PINION BALL BEARING(A)	207	6H100001	HANDLE KNOB CAP ORING