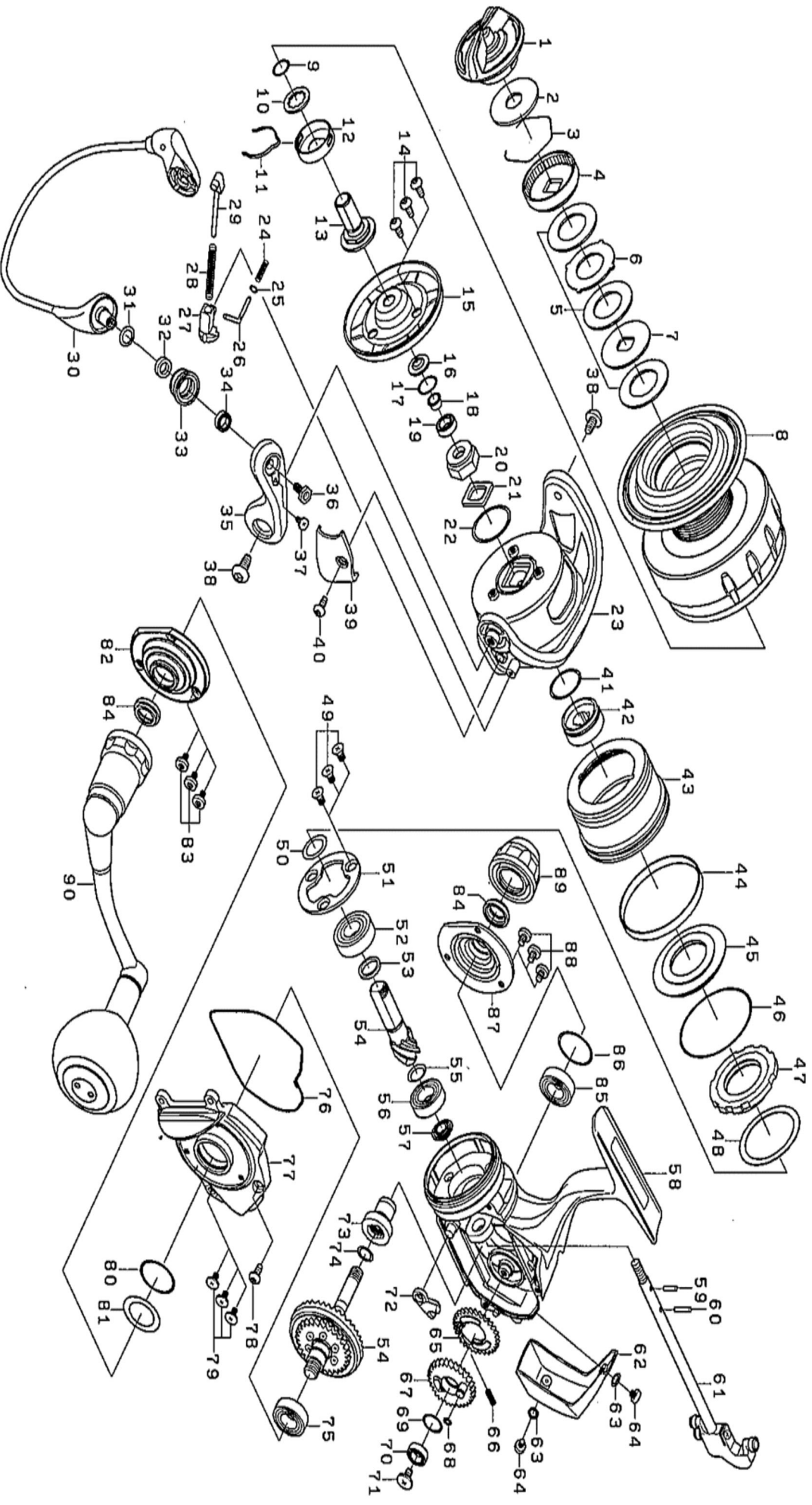




Please quote by part number, not key number when ordering
spares@daiwaaustralia.com.au PH: 02 8644 8644

2016 CATALINA 4500





Please quote by part number, not key number when ordering

spares@daiwaaustralia.com.au PH: 02 8644 8644

2016 CATALINA 4500

| Key No. | Part Number | Description | Key No. | Part Number | Description |
|---------|-------------|-----------------------------|---------|-------------|-------------------------------|
| 1 | 6J216702 | DRAG KNOB | 46 | 6H502601 | MAGSEALED PLATE O RING |
| 2 | 6H616701 | DRAG KNOB WASHER | 47 | 6F765401 | ONE WAY CLUTCH |
| 3 | 6F710001 | DRAG KNOB RING | 48 | 6G158101 | ONE WAY CLUTCH WASHER |
| 4 | 6G165603 | DRAG KNOB RACHET | 49 | 6F206902 | PINION BEARING(A)PLATE SCREW |
| 5 | 6H247202 | ATD DRAG WASHER | 50 | 63712829 | PINION BEARING WASHER |
| 6 | 6G162702 | DRAG LIP WASHER | 51 | 6H501901 | PINION BEARING(A)PLATE |
| 7 | 6G165902 | DRAG DISK WASHER | 52 | 66355001 | PINION BALL BEARING(A) |
| 8 | 6J330301 | SPOOL ASSY(2-7) | 53 | 6H501801 | PINION BEARING(A)COLLAR |
| 9 | 6G163201 | SPOOL METAL RING | 54 | 6Z022143 | PINION+DRIVE GEAR SET |
| 10 | 6H505300 | SPOOL WASHER | 55 | 6G578501 | PINION BALL BEARING(B)WASHER |
| 11 | 6B747701 | CLICK LEAR SPRING | 56 | 6G522702 | PINION BALL BEARING(B) |
| 12 | 6E122301 | CLICK HOLDER | 57 | 6H501601 | PINION BEARING(B)COLLAR |
| 13 | 6G203803 | SPOOL METAL RING | 58 | 6J326701 | BODY ASSY |
| 14 | 6H503901 | ROTOR COVER SCREW | 59 | 6G224101 | SPOOL METAL PIN |
| 15 | 6H505101 | ROTOR COVER | 60 | 6G162801 | MAIN SHAFT PIN |
| 16 | 6H505001 | ROTOR NUT PACKING | 61 | 6J327201 | MAIN SHAFT |
| 17 | 6G522103 | ROTOR NUT WASHER | 62 | 6H771302 | REAR CAP |
| 18 | 6H504901 | ROTOR NUT COLLAR | 63 | 6E096505 | REAR CAP SCREW(?)WASHER |
| 19 | 6G467102 | ROTOR NUT BALL BEARING | 64 | 6H798201 | REAR CAP SCREW |
| 20 | 6H504801 | ROTOR NUT | 65 | 6G157301 | OSCILLATING GEAR(A) |
| 21 | 6G392201 | ROTOR NUT PLATE | 66 | 6G157401 | OSCILLATING GEAR(A)SPRING |
| 22 | 6H501001 | ROTOR NUT O RING | 67 | 6H501201 | OSCILLATING GEAR(B) |
| 23 | 6H503202 | ROTOR | 68 | 6G213001 | OSCILLATING GEAR(B)RING |
| 24 | 6H503401 | ROTOR BRAKE SPRING | 69 | 6G522100 | WASHER |
| 25 | 6G685401 | ROTOR BRAKE WASHER | 70 | 6G467102 | OSCILLATING GEAR BALL BEARING |
| 26 | 6H503301 | ROTOR BRAKE SHAFT | 71 | 6H272201 | OSCILLATING GEAR SCREW |
| 27 | 6H503501 | ARM LEVER SPRING COLLAR | 72 | 6G159301 | STOPPER |
| 28 | 6H809101 | ARM LEVER SPRING | 73 | 6H500802 | OSCILLATING GEAR(C) |
| 29 | 6G017504 | ARM LEVER SHAFT | 74 | 6G252201 | OSCILLATING GEAR(C)O RING |
| 30 | 6H504001 | BAIL ASSY | 75 | 6G522802 | DRIVE BALL BEARING |
| 31 | 6E096500 | ROLLER WASHER | 76 | 6H502101 | BODY COVER PACKING |
| 32 | 6J042801 | ROLLER COLLAR | 77 | 6H502014 | BODY COVER |
| 33 | 6J042901 | LINE ROLLER | 78 | 6G160101 | BODY COVER SCREW(A) |
| 34 | 6J019302 | ROLLER BALL BEARING | 79 | 6H505201 | BODY COVER SCREW(B) |
| 35 | 6H503605 | ARM LEVER | 80 | 6H501001 | DRIVE BALL BEARING O RING |
| 36 | 6H504701 | ROLLER SCREW | 81 | 6H502200 | DRIVE WASHER |
| 37 | 6H842801 | ROLLER LOCK SCREW | 82 | 6J326301 | DRIVE BEARING COVER(L) |
| 38 | 6H503701 | HOLDER SCREW | 83 | 6G946801 | DRIVE BEARING COVER SCREW |
| 39 | 6H503801 | ARM LEVER SPRING COVER | 84 | 6H770901 | HANDLE PACKING |
| 40 | 6H503901 | ARM LEVER SPING COVER SCREW | 85 | 6G522802 | DRIVE BALL BEARING |
| 41 | 6H255001 | CLUTCH RING O RING | 86 | 6H501001 | DRIVE BALL BEARING O RING |
| 42 | 6H502301 | CLUTCH RING O RING | 87 | 6J326201 | DRIVE BEARING COVER(R) |
| 43 | 6H502905 | INFINIT COVER | 88 | 6G946801 | DRIVE BEARING COVER SCREW |
| 44 | 6H629701 | INFINIT COVER O RING | 89 | 6H506201 | HANDLE CAP |
| 45 | 6H535301 | MAGSEALED PLATE | 90 | 6J326801 | HANDLE ASSY |
| 200 | 63753005 | HANDLE KNOB WASHER | 204 | 6E454003 | HANDLE KNOB SCREW |
| 201 | 6F648301 | HANDLE KNOB COLLAR | 205 | 6H318307 | HANDLE CAP COLLAR |
| 202 | 6H425507 | HANDLE KNOB COLLAR | 206 | 6J327101 | HANDLE KNOB CAP(WITH O RING) |
| 203 | 6G466206 | HANDLE KNOB BALL BEARING | 207 | 6H100001 | HANDLE KNOB CAP ORING |