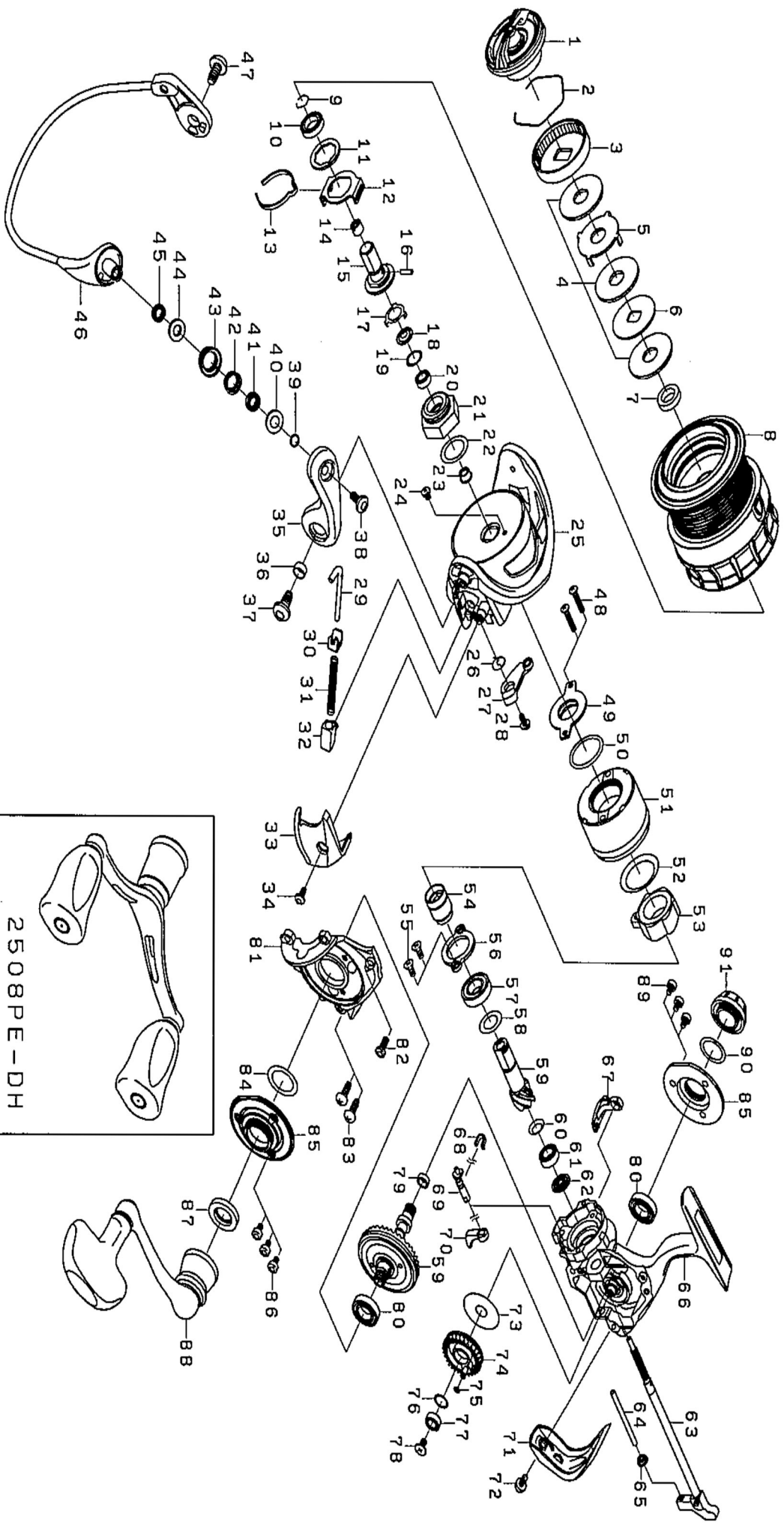




Please quote by part number, not key number when ordering
spares@daiwaaustralia.com.au PH: 02 8644 8644
2015 LUVIAS 3012H





Please quote by part number, not key number when ordering
spares@daiwaustralia.com.au PH: 02 8644 8644

2015 LUVIAS 3012H

Key No.	Part Number	Description	Key No.	Part Number	Description
1	6J217801	DRAG KNOB	47	6H431201	SCREW
2	6F710001	DRAG RING	48	6H596502	SCREW
3	6F895307	DRAG KNOB CLICK PLATE	49	6J354401	MAG SEALED
4	6J398501	ATD DRAG WASHER	50	6J354801	O RING
5	6F627301	DRAG EARED WASHER	51	6J431807	MAG SEALED CAP
6	6F627201	DRAG DISC WASHER	52	6H979201	WASHER
7	6H416301	DRAG COLLAR	53	6H412601	ONEWAY CLUTCH
8	6J236801	SPOOL AS	54	6H879601	CLUTCH RING
9	6G472401	RETAINER	55	6G997301	SCREW
10	6G818902	BALL BEARING	56	6H739101	BEARING RETAINER
11	6H806300	WASHER	57	6G279602	BALL BEARING
12	6H416001	CLICK HOLDER	58	6H411400	WASHER
13	6H416101	CLICK LEAF SPRING	59	6Z021642	GEAR UNIT
14	6J180801	SPOOL METAL NUT	60	6G572500	WASHER
15	6J181401	SPOOL METAL	61	6G467101	BALL BEARING
16	6G375001	PIN	62	6H459401	PINION COLLAR
17	6G471501	RETAINER	63	6J180601	MAIN SHAFT
18	6H461201	ROTOR NUT PACKING	64	6H778701	STABILIZER BAR
19	6G466103	WASHER	65	6H778801	COLLAR
20	6G466205	BALL BEARING	66	6J236101	BODY ASSY.
21	6H805801	ROTOR NUT	67	6H737801	BAIL TRIP PLATE
22	63712824	WASHER	68	6H809201	A/R CAM SPRING
23	6H854901	COLLAR	69	6H738201	ANTI-REVERSE CAM
24	6H022701	SCREW	70	6H410106	STOPPER LEVER
25	6H986317	Rotor	71	6H850703	REAR CAP
26	6H413601	KICK LEVER SPRING	72	6H850801	REAR CAP SCREW
27	6J072301	BAIL TRIP LEVER	73	6H545402	WASHER
28	6H417701	KICK LEVER SCREW	74	6H458902	OSCILLATING GEAR
29	6H572001	SHAFT	75	6G869601	O RING
30	6H576101	PLATE	76	6G466100	WASHER
31	6J089301	BAIL SPRING	77	6G466202	BALL BEARING
32	6J089401	BAIL SPRING HOLDER	78	6G997001	SCREW (I)
33	6H986401	COVER	79	6H459901	DRIVE GEAR RING
34	6H431301	COVER SCREW	80	6H739703	BALL BEARING
35	6H960104	AIR LEVER	81	6H779505	Side Cover
36	6H962401	COLLAR	82	63511010	SCREW
37	6H431201	SCREW	83	6G997701	SCREW
38	6H697701	SCREW	84	6G468000	WASHER
39	6H961001	COLLAR (C)	85	6J236201	BOD COVER(A)
40	6H038301	PACKING	86	6F623305	SCREW
41	6G686903	BALL BEARING	87	6H866201	PACKING
42	6H960901	COLLAR (D)	88	6J236701	HANDLE ASSY.
43	6G686703	LINE ROLLER	89	6G997503	SCREW
44	6H960801	COLLAR	90	6G399702	O RING
45	6H960701	COLLAR	91	6H745101	HANDLE SCREW CAP
46	6H986501	BAIL AS.			