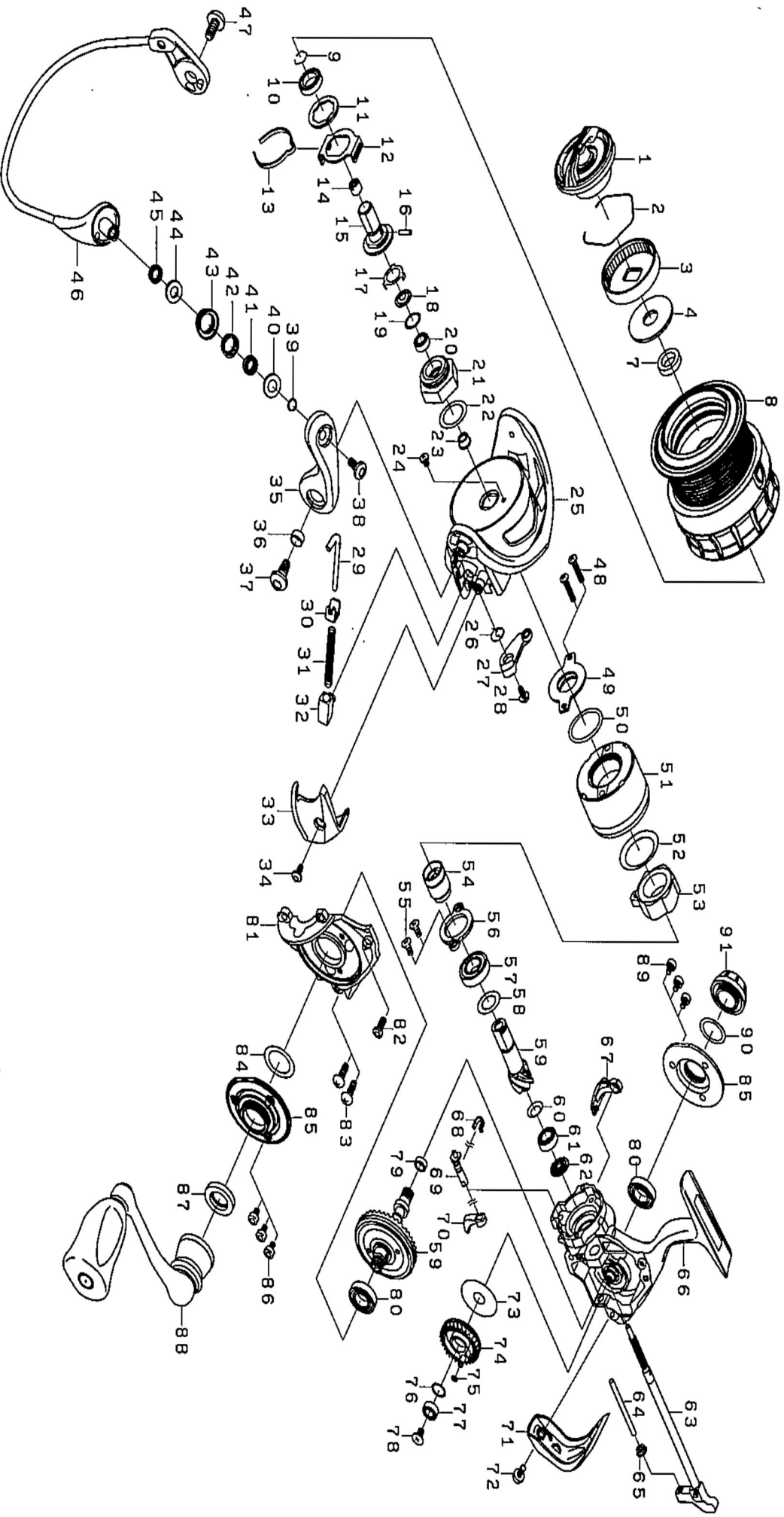




Please quote by part number, not key number when ordering  
spares@daiwaaustralia.com.au PH: 02 8644 8644  
**2015 LUVIAS 2004**





Please quote by part number, not key number when ordering

spares@daiwaaustralia.com.au PH: 02 8644 8644

## 2015 LUVIAS 2004

Key No.	Part Number	Description	Key No.	Part Number	Description
1	6J235401	DRAG KNOB	47	6H431201	SCREW
2	6F742501	DRAG RING	48	6H596502	SCREW
3	6F908704	DRAG KNOB CLICK PLATE	49	6J354401	MAG SEALED
4	6J398201	ATD DRAG WASHER	50	6J354801	O RING
7	6H416301	DRAG COLLAR	51	6J431807	MAG SEALED CAP
8	6J235601	SPOOL ASSY.	52	6H979201	WASHER
9	6G472401	RETAINER	53	6H412601	ONEWAY CLUTCH
10	6G818902	BALL BEARING	54	6H879601	CLUTCH RING
11	6H806300	WASHER =>6H806301	55	6G997301	SCREW
12	6H416001	CLICK HOLDER	56	6H739101	BEARING RETAINER
13	6H416101	CLICK LEAF SPRING	57	6G279602	BALL BEARING
14	6J180801	SPOOL METAL NUT	58	63758500	WASEHR
15	6H415901	SPOOL METAL	59	6Z021281	GEAR UNIT
16	6G375001	PIN	60	6H814900	SPRING WASHER
17	6G471501	RETAINER EHBRC2508R	61	6H738902	BALL BEARING
18	6H415701	ROTOR NUT PACKING	62	6H411201	PINION COLLAR
19	6G466103	WASHER (=6G466100)	63	6J180001	OSCILATING SLIDER
20	6G466205	BALL BEARING	64	6H738701	STABILIZER BAR
21	6H806201	ROTOR NUT	65	6H738801	COLLAR
22	63727601	WASEHR	66	6J217201	BODY
23	6H854701	COLLAR	67	6H754301	BAIL KICK COLLAR
24	6H022701	SCREW	68	6H809201	A/R CAM SPRING
25	6H974314	ROTOR	69	6H738201	ANTI-REVERSE CAM
26	6H443301	LEVER SPRING	70	6H410106	LEVER
27	6H443401	KICK LEVER	71	6H836702	REAR CAP
28	6H417701	KICK LEVER SCREW	72	6H836801	REAR CAP SCREW
29	6H443601	ARM LEVER SHAFT	73	6H607902	WASHER
30	6H576101	PLATE	74	6H788901	O/S GEAR
31	6H442401	SPRING	75	6G683301	O RING
32	6H414301	ARM LEVER SP.HOLDER	76	6H129200	WASHER (=6H129201)
33	6H974401	COVER	77	6G469005	BALL BEARING
34	6H431301	COVER SCREW	78	6G997001	SCREW (I)
35	6H960104	ARM LEVER	79	6H455601	O RING
36	6H962401	COLLAR	80	6H739703	BALL BEARING
37	6H431201	SCREW	81	6H740108	BODY COVER
38	6H697701	SCREW	82	63511010	SCREW
39	6H961001	COLLAR (C)	83	6G997701	SCREW
40	6H038301	PACKING	84	6G468000	WASEHR
41	6G686903	BALL BEARING	85	6J216001	BODY COVER(A)
42	6H960901	COLLAR (D)	86	6F623305	SCREW
43	6G686703	LINE ROLLER	87	6H866201	PACKING
44	6H960801	COLLAR	88	6J235501	HANDLE ASSY.
45	6H960701	COLLAR	89	6G997503	SCREW
46	6H974501	BAIL AS.	90	6G399702	O RING
			91	6H745101	HANDLE SCREW CAP