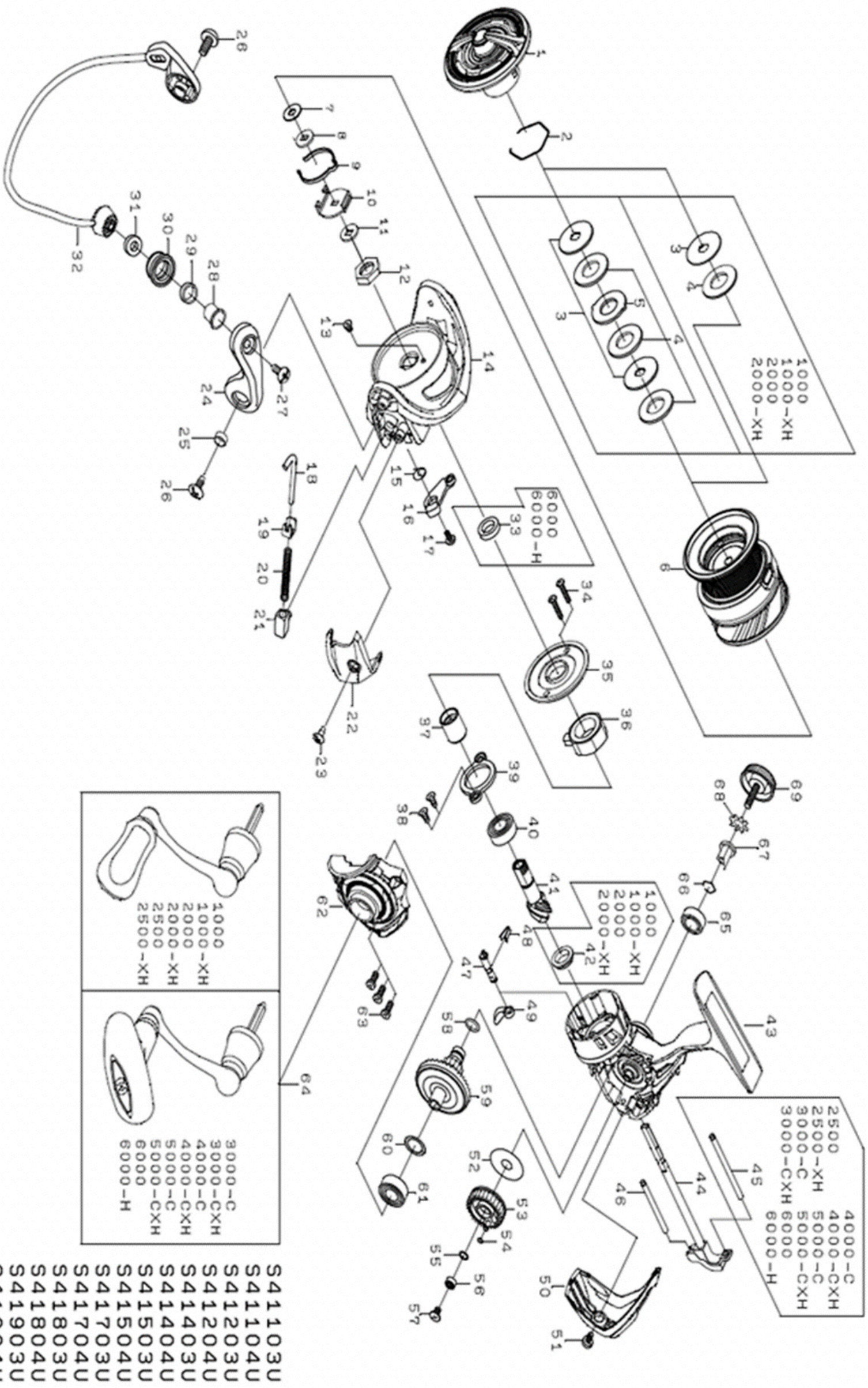




19 REVROS LT 2500

Feel Alive.

Please quote by part number, not key number when ordering.
spares@daiwaaustralia.com.au PH: (02) 8644 8644



REEL NAME	MGFT CODE	KEY NO	PARTS CODE	DESCRIPTION
19 REVROS LT 2500	S41403U	1	6Q346201	DRAG KNOB
19 REVROS LT 2500	S41403U	2	6Q346101	DRAG RING
19 REVROS LT 2500	S41403U	3	6J547001	DRAG DISC WASHER
19 REVROS LT 2500	S41403U	4	6J546801	DRAG WASHER
19 REVROS LT 2500	S41403U	5	6Q346001	-----
19 REVROS LT 2500	S41403U	6	6Q477901	SPOOL ASSEMBLY (2 - 6)
19 REVROS LT 2500	S41403U	7	6E398000	SPOOL WASHER(A)
19 REVROS LT 2500	S41403U	8	6Q348502	SPOOL WASHER(B)
19 REVROS LT 2500	S41403U	9	6Q457701	CLICK LEAF SPRING
19 REVROS LT 2500	S41403U	10	6Q457601	CLICK HOLDER
19 REVROS LT 2500	S41403U	11	6Q344001	CLICK HOLDER WASHER
19 REVROS LT 2500	S41403U	12	6Q122401	ROTOR NUT
19 REVROS LT 2500	S41403U	13	6H022701	ROTOR NUT SCREW
19 REVROS LT 2500	S41403U	14	6Q343007	ROTOR
19 REVROS LT 2500	S41403U	15	6H413601	KICK LEVER SPRING
19 REVROS LT 2500	S41403U	16	6Q343101	KICK LEVER
19 REVROS LT 2500	S41403U	17	6H417701	KICK LEVER SCREW
19 REVROS LT 2500	S41403U	18	6Q343301	ARM LEVER SHAFT
19 REVROS LT 2500	S41403U	19	6H576101	ARM LEVER PLATE
19 REVROS LT 2500	S41403U	20	6J642801	ARM LEVER SPRING
19 REVROS LT 2500	S41403U	21	6Q121501	ARM LEVER SPRING HOLDER
19 REVROS LT 2500	S41403U	22	6Q343501	ARM LEVER SPRING COVER
19 REVROS LT 2500	S41403U	23	6G205001	COVER SCREW
19 REVROS LT 2500	S41403U	24	6Q121606	ARM LEVER
19 REVROS LT 2500	S41403U	25	6Q121701	ARM LEVER COLLAR
19 REVROS LT 2500	S41403U	26	6G205001	ARM LEVER SCREW
19 REVROS LT 2500	S41403U	27	6G195602	ROLLAR SCREW
19 REVROS LT 2500	S41403U	28	6G195501	ROLLAR COLLAR(A)
19 REVROS LT 2500	S41403U	29	6G220701	ROLLAR COLLAR(B)
19 REVROS LT 2500	S41403U	30	6J089902	LINE ROLLER
19 REVROS LT 2500	S41403U	31	6Q203401	ROLLAR COLLAR(C)
19 REVROS LT 2500	S41403U	32	6Q457501	BAIL ASSEMBLY
19 REVROS LT 2500	S41403U	33	-----	-----
19 REVROS LT 2500	S41403U	34	6G837101	SHIELD CAP SCREW
19 REVROS LT 2500	S41403U	35	6Q139401	SHEILD CAP
19 REVROS LT 2500	S41403U	36	6Q308301	ONEWAY CLUCH
19 REVROS LT 2500	S41403U	37	6J001401	CLUCH RING
19 REVROS LT 2500	S41403U	38	6Q126201	PINION BALL BEARING PLATE SCREW
19 REVROS LT 2500	S41403U	39	6H442201	PINION BALL BEARING PLATE
19 REVROS LT 2500	S41403U	40	6G467302	PINION BALL BEARING
19 REVROS LT 2500	S41403U	41	6Q457201	PINION GEAR
19 REVROS LT 2500	S41403U	42	-----	PINION COLLAR
19 REVROS LT 2500	S41403U	43	6Q477601	BODY
19 REVROS LT 2500	S41403U	44	6Q341501	MAIN SHAFT
19 REVROS LT 2500	S41403U	45	6Q126301	-----
19 REVROS LT 2500	S41403U	46	6Q119101	OSCILLATING POST(B)
19 REVROS LT 2500	S41403U	47	6Q118101	STOPPER CAM
19 REVROS LT 2500	S41403U	48	6H697801	STOPPER CAM SPRING
19 REVROS LT 2500	S41403U	49	6Q118001	STOPPER LEVER
19 REVROS LT 2500	S41403U	50	6Q120301	REAR CAP
19 REVROS LT 2500	S41403U	51	6G270801	REAR CAP SCREW
19 REVROS LT 2500	S41403U	52	6H595701	OSCILLATING GEAR WASHER
19 REVROS LT 2500	S41403U	53	6Q139001	OSCILLATING GEAR
19 REVROS LT 2500	S41403U	54	6H770601	OSCILLATING GEAR ORING
19 REVROS LT 2500	S41403U	55	6H129200	OSCILLATING GEAR BEARING WASHER
19 REVROS LT 2500	S41403U	56	6G469005	OSCILLATING GEAR BALL BEARING
19 REVROS LT 2500	S41403U	57	6Q126101	OSCILLATING GEAR SCREW
19 REVROS LT 2500	S41403U	58	6G670501	DRIVE GEAR ORING
19 REVROS LT 2500	S41403U	59	6Q341901	DRIVE GEAR
19 REVROS LT 2500	S41403U	60	63758500	DRIVE WASHER
19 REVROS LT 2500	S41403U	61	6G467302	DRIVE BALL BEARING(A)
19 REVROS LT 2500	S41403U	62	6Q477701	BODY COVER
19 REVROS LT 2500	S41403U	63	6G115001	BODY COVER SCREW
19 REVROS LT 2500	S41403U	64	6Q477801	HANDLE ASSEMBLY
19 REVROS LT 2500	S41403U	65	6G522706	DRIVE BALL BEARING(B)
19 REVROS LT 2500	S41403U	66	6G472401	DRIVE BALL BEARING RING
19 REVROS LT 2500	S41403U	67	6F721001	HANDLE COLLAR
19 REVROS LT 2500	S41403U	68	61608401	HANDLE WASHER
19 REVROS LT 2500	S41403U	69	6Q132401	HANDLE SCREW