



Gas Struts

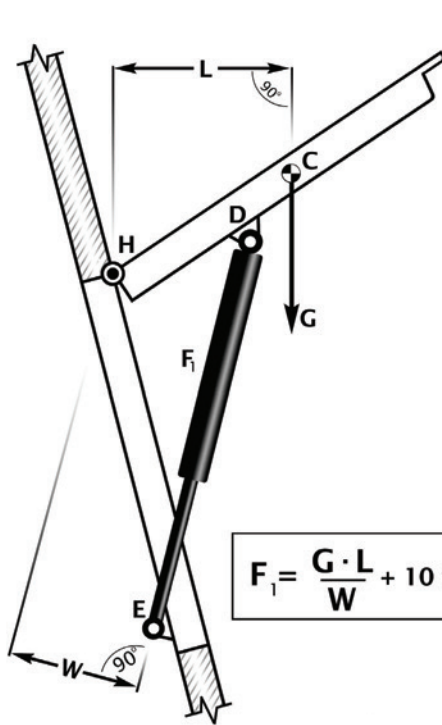




Tips on Correct Installation of Gas Struts



- Always install after painting, welding etc.
- The gas strut should always be fitted with the piston pointing down.
- Temperature range -30C to +80C
- Use suitable end fittings and angle joints to avoid coupling jamming.
- Gas struts are maintenance free, do not grease or lubricate shaft.
- Install without twisting.
- Avoid lateral forces.
- Protect piston against dirt, paint or damage.
- Output forces will vary approximately 4% for every 10C change in temperature.



$$F_1 = \frac{G \cdot L}{W} + 10 \text{ to } 15\% \text{ safety factor}$$



- C Centre of gravity
- D Moveable pivot
- E Fixed pivot
- H Hinge
- G Weight
- L Horizontal distance from centre of gravity to hinge
- W Effective lever arm of gas strut = smallest distance gas strut = hinge E
- F₁ Force of gas strut

UES international have a complete and comprehensive range of gas struts, fittings and brackets available through our entire branch network.

Whether it be for Transportation, Automotive, Camping, Domestic or Industrial use we have the product suitable for almost all requirements.

With an extensive range of lengths and pressures in all branches and the availability of strut gassing machines means a fast turnaround time and the ability to provide struts to your exact requirements.

**UES Gas Struts have a 2 year warranty from date of Invoice.*

Gas Struts

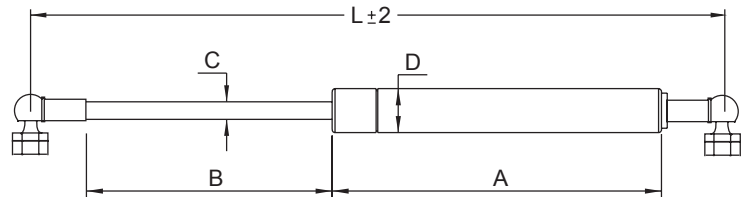
GS185-075N → GS325-600N

MATERIAL

Steel

FINISH

Corrosion Resistance Coated Black



UES P/N	DESCRIPTION	STRENGTH	L'mm	B'mm	C'mm	D'mm	END FITTINGS
GS185-075N	GAS STRUT 185mm x 75N	75N	185	60	6	15	B/J 10mm
GS185-100N	GAS STRUT 185mm x 100N	100N	185	60	6	15	B/J 10mm
GS195-050N	GAS STRUT 195mm x 50N	50N	195	65	6	15	B/J 10mm
GS195-100N	GAS STRUT 195mm x 100N	100N	195	65	6	15	B/J 10mm
GS195-150N	GAS STRUT 195mm x 150N	150N	195	65	6	15	B/J 10mm
GS195-200N	GAS STRUT 195mm x 200N	200N	195	65	6	15	B/J 10mm
GS195-250N	GAS STRUT 195mm x 250N	250N	195	65	6	15	B/J 10mm
GS195-300N	GAS STRUT 195mm x 300N	300N	195	65	6	15	B/J 10mm
GS195-400N	GAS STRUT 195mm x 400N	400N	195	65	8	18	B/J 10mm
GS235-050N	GAS STRUT 235mm x 50N	50N	235	85	6	15	B/J 10mm
GS235-100N	GAS STRUT 235mm x 100N	100N	235	85	6	15	B/J 10mm
GS235-150N	GAS STRUT 235mm x 150N	150N	235	85	6	15	B/J 10mm
GS235-250N	GAS STRUT 235mm x 250N	250N	235	85	6	15	B/J 10mm
GS285-200N	GAS STRUT 285mm x 200N	200N	285	105	8	18	B/J 10mm
GS285-350N	GAS STRUT 285mm x 350N	350N	285	105	8	18	B/J 10mm
GS285-400N	GAS STRUT 285mm x 400N	400N	285	105	8	18	B/J 10mm
GS285-500N	GAS STRUT 285mm x 500N	500N	285	105	8	18	B/J 10mm
GS285-600N	GAS STRUT 285mm x 600N	600N	285	105	8	18	B/J 10mm
GS305-100N	GAS STRUT 305mm x 100N	100N	305	107	6	15	B/J 10mm
GS305-150N	GAS STRUT 305mm x 150N	150N	305	107	6	15	B/J 10mm
GS305-200N	GAS STRUT 305mm x 200N	200N	305	107	6	15	B/J 10mm
GS305-250N	GAS STRUT 305mm x 250N	250N	305	107	6	15	B/J 10mm
GS305-300N	GAS STRUT 305mm x 300N	300N	305	107	6	15	B/J 10mm
GS315-050N	GAS STRUT 315mm x 50N	50N	315	110	6	15	B/J 10mm
GS315-100N	GAS STRUT 315mm x 100N	100N	315	110	6	15	B/J 10mm
GS315-150N	GAS STRUT 315mm x 150N	150N	315	110	6	15	B/J 10mm
GS315-200N	GAS STRUT 315mm x 200N	200N	315	110	6	15	B/J 10mm
GS315-250N	GAS STRUT 315mm x 250N	250N	315	110	6	15	B/J 10mm
GS315-300N	GAS STRUT 315mm x 300N	300N	315	110	6	15	B/J 10mm
GS315-350N	GAS STRUT 315mm x 350N	350N	315	110	6	15	B/J 10mm
GS315-400N	GAS STRUT 315mm x 400N	400N	315	110	8	18	B/J 10mm
GS315-450N	GAS STRUT 315mm x 450N	450N	315	110	8	18	B/J 10mm
GS325-050N	GAS STRUT 325mm x 50N	50N	325	123	6	15	B/J 10mm
GS325-100N	GAS STRUT 325mm x 100N	100N	325	123	6	15	B/J 10mm
GS325-150N	GAS STRUT 325mm x 150N	150N	325	123	6	15	B/J 10mm
GS325-200N	GAS STRUT 325mm x 200N	200N	325	123	6	15	B/J 10mm
GS325-250N	GAS STRUT 325mm x 250N	250N	325	123	6	15	B/J 10mm
GS325-300N	GAS STRUT 325mm x 300N	300N	325	123	6	15	B/J 10mm
GS325-350N	GAS STRUT 325mm x 350N	350N	325	123	6	15	B/J 10mm
GS325-400N	GAS STRUT 325mm x 400N	400N	325	123	8	18	B/J 10mm
GS325-450N	GAS STRUT 325mm x 450N	450N	325	123	8	18	B/J 10mm
GS325-500N	GAS STRUT 325mm x 500N	500N	325	123	8	18	B/J 10mm
GS325-600N	GAS STRUT 325mm x 600N	600N	325	123	8	18	B/J 10mm

Gas Struts

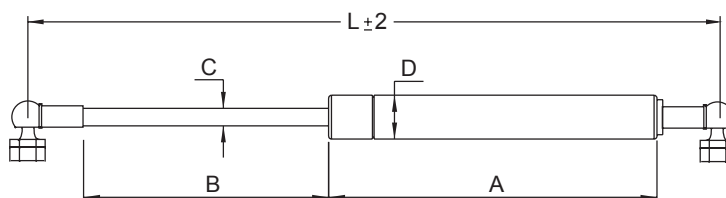
GS375-100N → GS485-800N

MATERIAL

Steel

FINISH

Corrosion Resistance Coated Black



UES P/N	DESCRIPTION	STRENGTH	L'mm	B'mm	C'mm	D'mm	END FITTINGS
GS375-100N	GAS STRUT 375mm x 100N	100N	375	150	8	18	B/J 10mm
GS375-150N	GAS STRUT 375mm x 150N	150N	375	150	8	18	B/J 10mm
GS375-200N	GAS STRUT 375mm x 200N	200N	375	150	8	18	B/J 10mm
GS375-250N	GAS STRUT 375mm x 250N	250N	375	150	8	18	B/J 10mm
GS375-350N	GAS STRUT 375mm x 350N	350N	375	150	8	18	B/J 10mm
GS380-250N	GAS STRUT 380mm x 250N	250N	380	150	8	18	B/J 10mm
GS405-100N	GAS STRUT 405mm x 100N	100N	405	165	8	18	B/J 10mm
GS405-150N	GAS STRUT 405mm x 150N	150N	405	165	8	18	B/J 10mm
GS405-200N	GAS STRUT 405mm x 200N	200N	405	165	8	18	B/J 10mm
GS405-250N	GAS STRUT 405mm x 250N	250N	405	165	8	18	B/J 10mm
GS405-300N	GAS STRUT 405mm x 300N	300N	405	165	8	18	B/J 10mm
GS405-350N	GAS STRUT 405mm x 350N	350N	405	165	8	18	B/J 10mm
GS405-400N	GAS STRUT 405mm x 400N	400N	405	165	8	18	B/J 10mm
GS405-500N	GAS STRUT 405mm x 500N	500N	405	165	8	18	B/J 10mm
GS405-600N	GAS STRUT 405mm x 600N	600N	405	165	8	18	B/J 10mm
GS435-100N	GAS STRUT 435mm x 100N	100N	435	170	8	18	B/J 10mm
GS435-150N	GAS STRUT 435mm x 150N	150N	435	170	8	18	B/J 10mm
GS435-200N	GAS STRUT 435mm x 200N	200N	435	170	8	18	B/J 10mm
GS435-250N	GAS STRUT 435mm x 250N	250N	435	170	8	18	B/J 10mm
GS435-300N	GAS STRUT 435mm x 300N	300N	435	170	8	18	B/J 10mm
GS435-350N	GAS STRUT 435mm x 350N	350N	435	170	8	18	B/J 10mm
GS435-400N	GAS STRUT 435mm x 400N	400N	435	170	8	18	B/J 10mm
GS435-450N	GAS STRUT 435mm x 450N	450N	435	170	8	18	B/J 10mm
GS435-500N	GAS STRUT 435mm x 500N	500N	435	170	8	18	B/J 10mm
GS435-600N	GAS STRUT 435mm x 600N	600N	435	170	8	18	B/J 10mm
GS445-100N	GAS STRUT 445mm x 100N	100N	445	185	8	18	B/J 10mm
GS445-150N	GAS STRUT 445mm x 150N	150N	445	185	8	18	B/J 10mm
GS445-200N	GAS STRUT 445mm x 200N	200N	445	185	8	18	B/J 10mm
GS445-250N	GAS STRUT 445mm x 250N	250N	445	185	8	18	B/J 10mm
GS445-300N	GAS STRUT 445mm x 300N	300N	445	185	8	18	B/J 10mm
GS445-350N	GAS STRUT 445mm x 350N	350N	445	185	8	18	B/J 10mm
GS445-400N	GAS STRUT 445mm x 400N	400N	445	185	8	18	B/J 10mm
GS445-500N	GAS STRUT 445mm x 500N	500N	445	185	8	18	B/J 10mm
GS445-600N	GAS STRUT 445mm x 600N	600N	445	185	8	18	B/J 10mm
GS445-900N	GAS STRUT 445mm x 900N	900N	445	185	10	22	B/J 10mm
GS485-100N	GAS STRUT 485mm x 100N	100N	485	205	8	18	B/J 10mm
GS485-150N	GAS STRUT 485mm x 150N	150N	485	205	8	18	B/J 10mm
GS485-200N	GAS STRUT 485mm x 200N	200N	485	205	8	18	B/J 10mm
GS485-250N	GAS STRUT 485mm x 250N	250N	485	205	8	18	B/J 10mm
GS485-300N	GAS STRUT 485mm x 300N	300N	485	205	8	18	B/J 10mm
GS485-350N	GAS STRUT 485mm x 350N	350N	485	205	8	18	B/J 10mm
GS485-400N	GAS STRUT 485mm x 400N	400N	485	205	8	18	B/J 10mm
GS485-500N	GAS STRUT 485mm x 500N	500N	485	205	8	18	B/J 10mm
GS485-600N	GAS STRUT 485mm x 600N	600N	485	205	8	18	B/J 10mm
GS485-700N	GAS STRUT 485mm x 700N	700N	485	205	10	22	B/J 10mm
GS485-800N	GAS STRUT 485mm x 800N	800N	485	205	10	22	B/J 10mm

Gas Struts

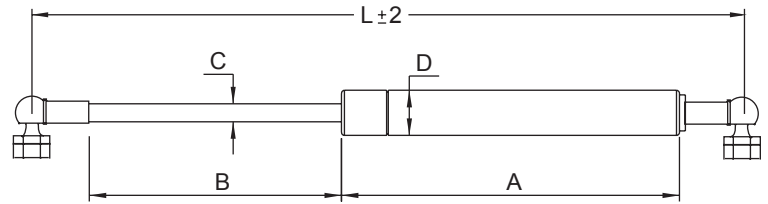
GS502-100N → GS535-600N

MATERIAL

Steel

FINISH

Corrosion Resistance Coated Black



UES P/N	DESCRIPTION	STRENGTH	L'mm	B'mm	C'mm	D'mm	END FITTINGS
GS502-100N	GAS STRUT 502mm x 100N	100N	502	207	8	18	B/J 10mm
GS502-150N	GAS STRUT 502mm x 150N	150N	502	207	8	18	B/J 10mm
GS502-200N	GAS STRUT 502mm x 200N	200N	502	207	8	18	B/J 10mm
GS502-250N	GAS STRUT 502mm x 250N	250N	502	207	8	18	B/J 10mm
GS502-300N	GAS STRUT 502mm x 300N	300N	502	207	8	18	B/J 10mm
GS502-350N	GAS STRUT 502mm x 350N	350N	502	207	8	18	B/J 10mm
GS502-400N	GAS STRUT 502mm x 400N	400N	502	207	8	18	B/J 10mm
GS502-450N	GAS STRUT 502mm x 450N	450N	502	207	8	18	B/J 10mm
GS502-500N	GAS STRUT 502mm x 500N	500N	502	207	8	18	B/J 10mm
GS502-600N	GAS STRUT 502mm x 600N	600N	502	207	8	18	B/J 10mm
GS502-700N	GAS STRUT 502mm x 700N	700N	502	207	10	22	B/J 10mm
GS502-900N	GAS STRUT 502mm x 900N	900N	502	207	10	22	B/J 10mm
GS525-100N	GAS STRUT 525mm x 100N	100N	525	220	8	18	B/J 10mm
GS525-150N	GAS STRUT 525mm x 150N	150N	525	220	8	18	B/J 10mm
GS525-200N	GAS STRUT 525mm x 200N	200N	525	220	8	18	B/J 10mm
GS525-250N	GAS STRUT 525mm x 250N	250N	525	220	8	18	B/J 10mm
GS525-300N	GAS STRUT 525mm x 300N	300N	525	220	8	18	B/J 10mm
GS525-350N	GAS STRUT 525mm x 350N	350N	525	220	8	18	B/J 10mm
GS525-400N	GAS STRUT 525mm x 400N	400N	525	220	8	18	B/J 10mm
GS525-500N	GAS STRUT 525mm x 500N	500N	525	220	8	18	B/J 10mm
GS525-600N	GAS STRUT 525mm x 600N	600N	525	220	8	18	B/J 10mm
GS525-700N	GAS STRUT 525mm x 700N	700N	525	220	10	22	B/J 10mm
GS525-800N	GAS STRUT 525mm x 800N	800N	525	220	10	22	B/J 10mm
GS535-100N	GAS STRUT 535mm x 100N	100N	535	230	8	18	B/J 10mm
GS535-200N	GAS STRUT 535mm x 200N	200N	535	230	8	18	B/J 10mm
GS535-250N	GAS STRUT 535mm x 250N	250N	535	230	8	18	B/J 10mm
GS535-300N	GAS STRUT 535mm x 300N	300N	535	230	8	18	B/J 10mm
GS535-350N	GAS STRUT 535mm x 350N	350N	535	230	8	18	B/J 10mm
GS535-400N	GAS STRUT 535mm x 400N	400N	535	230	8	18	B/J 10mm
GS535-450N	GAS STRUT 535mm x 450N	450N	535	230	8	18	B/J 10mm
GS535-500N	GAS STRUT 535mm x 500N	500N	535	230	8	18	B/J 10mm
GS535-600N	GAS STRUT 535mm x 600N	600N	535	230	8	18	B/J 10mm

Gas Struts

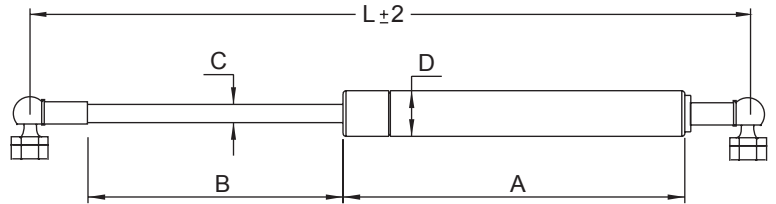
GS585-150N → GS715-1200N

MATERIAL

Steel

FINISH

Corrosion Resistance Coated Black



UES P/N	DESCRIPTION	STRENGTH	L'mm	B'mm	C'mm	D'mm	END FITTINGS
GS585-150N	GAS STRUT 585mm x 150N	150N	585	250	10	22	B/J 13mm
GS585-200N	GAS STRUT 585mm x 200N	200N	585	250	10	22	B/J 13mm
GS585-250N	GAS STRUT 585mm x 250N	250N	585	250	10	22	B/J 13mm
GS585-300N	GAS STRUT 585mm x 300N	300N	585	250	10	22	B/J 13mm
GS585-350N	GAS STRUT 585mm x 350N	350N	585	250	10	22	B/J 13mm
GS585-400N	GAS STRUT 585mm x 400N	400N	585	250	10	22	B/J 13mm
GS585-500N	GAS STRUT 585mm x 500N	500N	585	250	10	22	B/J 13mm
GS585-600N	GAS STRUT 585mm x 600N	600N	585	250	10	22	B/J 13mm
GS585-700N	GAS STRUT 585mm x 700N	700N	585	250	10	22	B/J 13mm
GS585-800N	GAS STRUT 585mm x 800N	800N	585	250	10	22	B/J 13mm
GS585-900N	GAS STRUT 585mm x 900N	900N	585	250	10	22	B/J 13mm
GS595-200N	GAS STRUT 595mm x 200N	200N	595	260	10	22	B/J 13mm
GS595-250N	GAS STRUT 595mm x 250N	250N	595	260	10	22	B/J 13mm
GS595-300N	GAS STRUT 595mm x 300N	300N	595	260	10	22	B/J 13mm
GS595-350N	GAS STRUT 595mm x 350N	350N	595	260	10	22	B/J 13mm
GS595-400N	GAS STRUT 595mm x 400N	400N	595	260	10	22	B/J 13mm
GS595-500N	GAS STRUT 595mm x 500N	500N	595	260	10	22	B/J 13mm
GS595-600N	GAS STRUT 595mm x 600N	600N	595	260	10	22	B/J 13mm
GS595-700N	GAS STRUT 595mm x 700N	700N	595	260	10	22	B/J 13mm
GS595-800N	GAS STRUT 595mm x 800N	800N	595	260	10	22	B/J 13mm
GS605-450N	GAS STRUT 605mm x 450N	450N	605	270	10	22	B/J 13mm
GS605-1000N	GAS STRUT 605mm x 1000N	1000N	605	270	12.5	22	B/J 13mm
GS700-100N	GAS STRUT 700mm x 100N	100N	700	305	10	22	B/J 13mm
GS700-200N	GAS STRUT 700mm x 200N	200N	700	305	10	22	B/J 13mm
GS700-250N	GAS STRUT 700mm x 250N	250N	700	305	10	22	B/J 13mm
GS700-300N	GAS STRUT 700mm x 300N	300N	700	305	10	22	B/J 13mm
GS700-350N	GAS STRUT 700mm x 350N	350N	700	305	10	22	B/J 13mm
GS700-400N	GAS STRUT 700mm x 400N	400N	700	305	10	22	B/J 13mm
GS700-450N	GAS STRUT 700mm x 450N	450N	700	305	10	22	B/J 13mm
GS700-500N	GAS STRUT 700mm x 500N	500N	700	305	10	22	B/J 13mm
GS700-650N	GAS STRUT 700mm x 650N	650N	700	305	10	22	B/J 13mm
GS700-750N	GAS STRUT 700mm x 750N	750N	700	305	10	22	B/J 13mm
GS700-1200N	GAS STRUT 700mm x 1200N	1200N	700	305	12.5	22	B/J 13mm
GS715-300N	GAS STRUT 715mm x 300N	300N	715	310	10	22	B/J 13mm
GS715-450N	GAS STRUT 715mm x 450N	450N	715	310	10	22	B/J 13mm
GS715-700N	GAS STRUT 715mm x 700N	700N	715	310	10	22	B/J 13mm
GS715-750N	GAS STRUT 715mm x 750N	750N	715	310	10	22	B/J 13mm
GS715-1200N	GAS STRUT 715mm x 1200N	1200N	715	310	12.5	22	B/J 13mm

Gas Struts

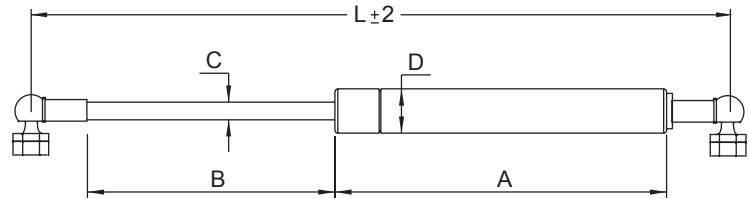
GS820-200N → GS825-800N

MATERIAL

Steel

FINISH

Corrosion Resistance Coated Black



UES P/N	DESCRIPTION	STRENGTH	L'mm	B'mm	C'mm	D'mm	END FITTINGS
GS820-200N	GAS STRUT 820mm x 200N	200N	820	370	10	22	B/J 13mm
GS820-300N	GAS STRUT 820mm x 300N	300N	820	370	10	22	B/J 13mm
GS820-400N	GAS STRUT 820mm x 400N	400N	820	370	10	22	B/J 13mm
GS820-500N	GAS STRUT 820mm x 500N	500N	820	370	10	22	B/J 13mm
GS820-600N	GAS STRUT 820mm x 600N	600N	820	370	10	22	B/J 13mm
GS820-700N	GAS STRUT 820mm x 700N	700N	820	370	10	22	B/J 13mm
GS820-800N	GAS STRUT 820mm x 800N	800N	820	370	10	22	B/J 13mm
GS820-900N	GAS STRUT 820mm x 900N	900N	820	370	10	22	B/J 13mm
GS820-1000N	GAS STRUT 820mm x 1000N	1000N	820	370	12.5	22	B/J 13mm
GS820-1100N	GAS STRUT 820mm x 1100N	1100N	820	370	12.5	22	B/J 13mm
GS820-1200N	GAS STRUT 820mm x 1200N	1200N	820	370	12.5	22	B/J 13mm
GS825-250N	GAS STRUT 825mm x 250N	250N	825	370	10	22	B/J 13mm
GS825-300N	GAS STRUT 825mm x 300N	300N	825	370	10	22	B/J 13mm
GS825-450N	GAS STRUT 825mm x 450N	450N	825	370	10	22	B/J 13mm
GS825-600N	GAS STRUT 825mm x 600N	600N	825	370	10	22	B/J 13mm
GS825-800N	GAS STRUT 825mm x 800N	800N	825	370	10	22	B/J 13mm

Brackets for Gas Struts

GSBRK002

MATERIAL

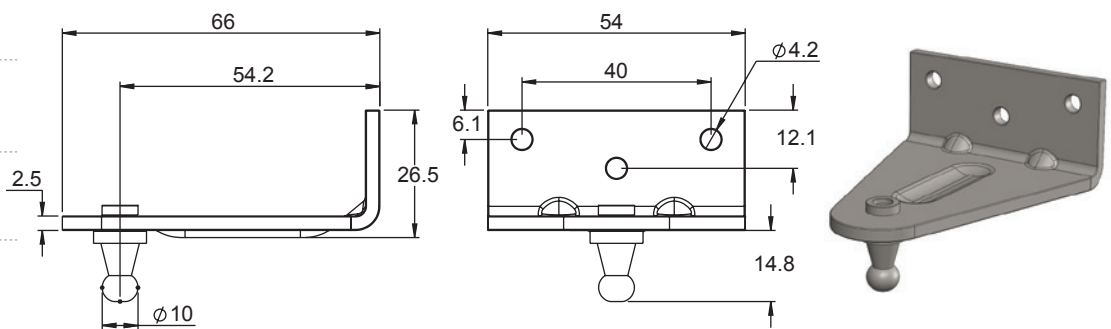
Stainless Steel

FINISH

Raw

FEATURES

33 x 31 x 48 mm



Brackets for Gas Struts

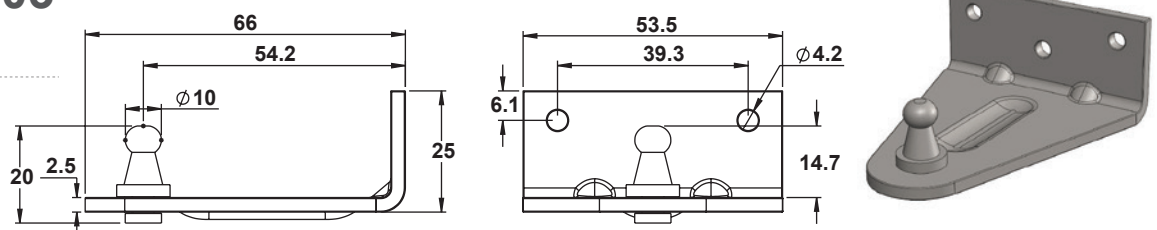
GSBRK003

MATERIAL

Stainless Steel

FINISH

Raw



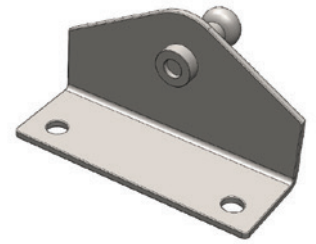
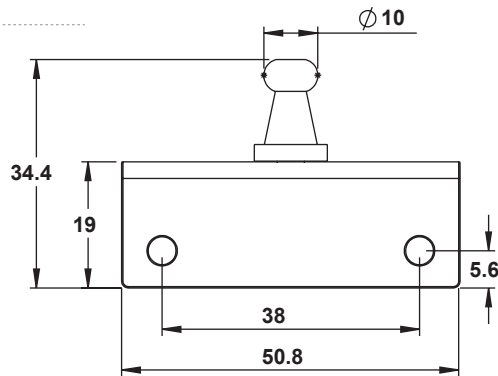
Brackets for Gas Struts GSBRK005

MATERIAL

Stainless Steel

FINISH

Raw



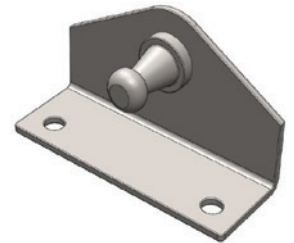
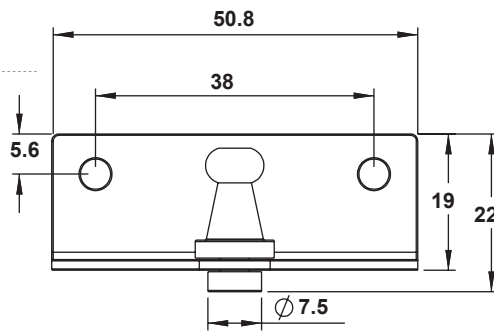
Brackets for Gas Struts GSBRK006

MATERIAL

Stainless Steel

FINISH

Raw



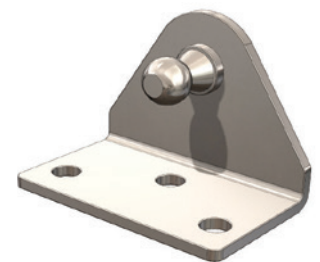
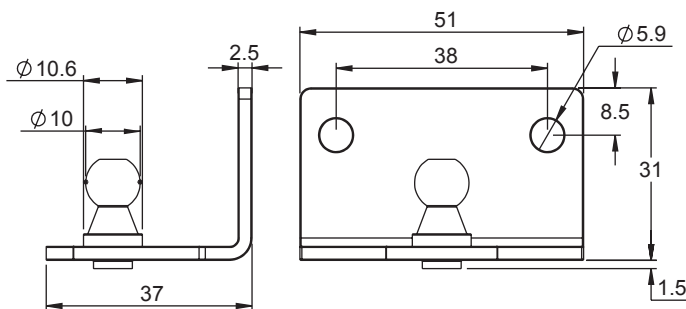
Brackets for Gas Struts GSBRK008

MATERIAL

Stainless Steel

FINISH

Raw



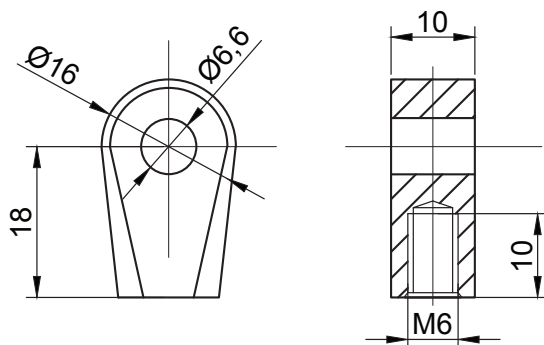
Eyelet 6x18x6mm Shaft GSEYEC2

MATERIAL

Steel

FINISH

ZP



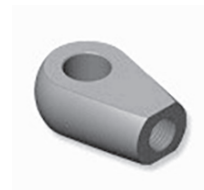
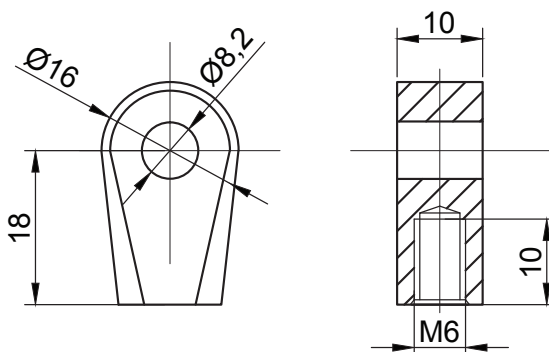
Eyelet 8x18x6mm Shaft GSEYEC3

MATERIAL

Steel

FINISH

ZP



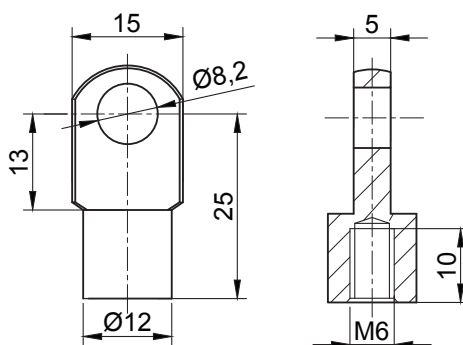
Eyelet 8x25x6mm Shaft GSEYEC4

MATERIAL

Steel

FINISH

ZP



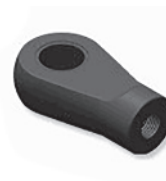
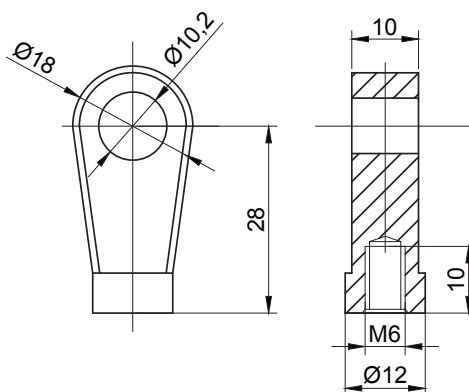
Eyelet 10x28x6mm Shaft GSEYEC7

MATERIAL

Steel

FINISH

ZP



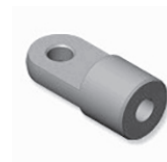
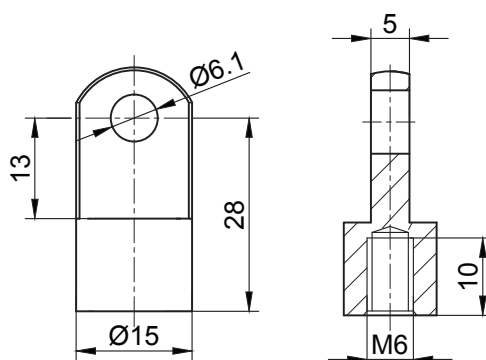
Eyelet 6x28x6mm Shaft GSEYEC10

MATERIAL

Steel

FINISH

ZP



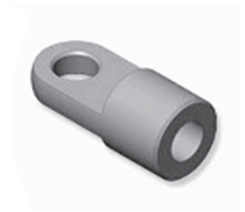
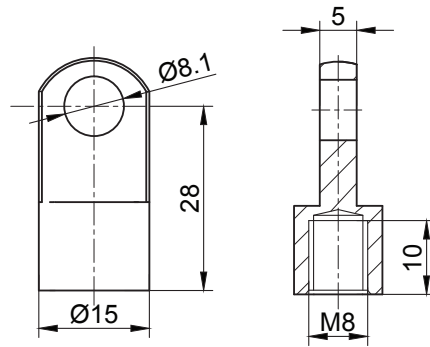
Eyelet 8x28x8mm Shaft GSEYEC25

MATERIAL

Steel

FINISH

ZP



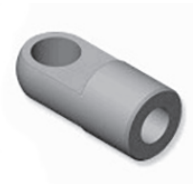
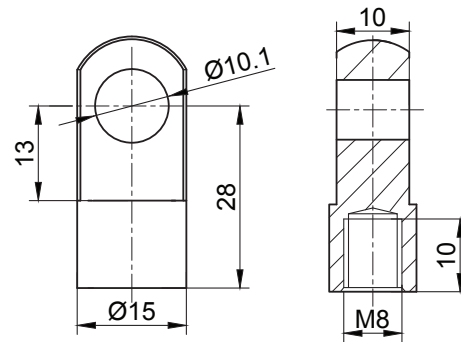
Eyelet 10x28x6mm Shaft GSEYEC26

MATERIAL

Steel

FINISH

ZP



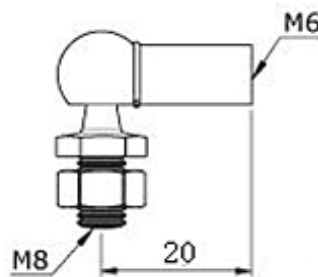
10mm Ball Joint Assembly GSBJ10

MATERIAL

Steel

FINISH

ZP, Chrome



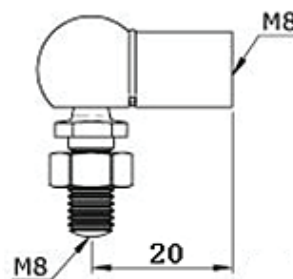
13mm Ball Joint Assembly GSBJ13

MATERIAL

Steel

FINISH

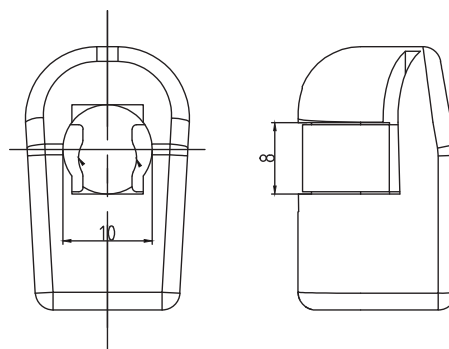
ZP, Chrome



10mm Plastic End Fitting GSPE10

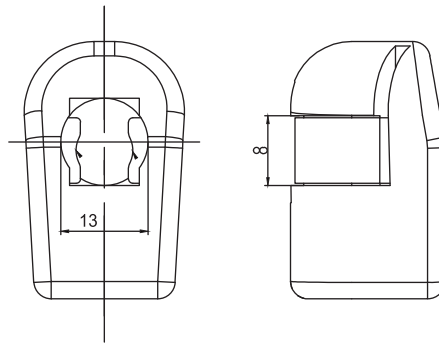
MATERIAL

Plastic



13mm Plastic End Fitting GSPE13

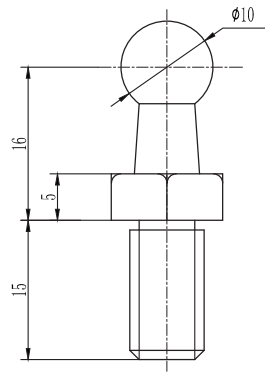
MATERIAL
Plastic



10mm Ball End Fittings Only GSBE10

MATERIAL
Steel

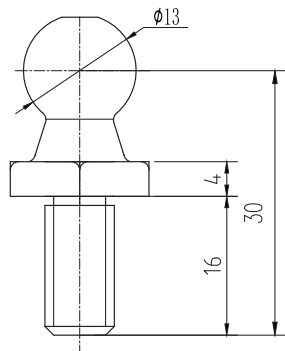
FINISH
ZP



13mm Ball End Fittings Only GSBE13

MATERIAL
Steel

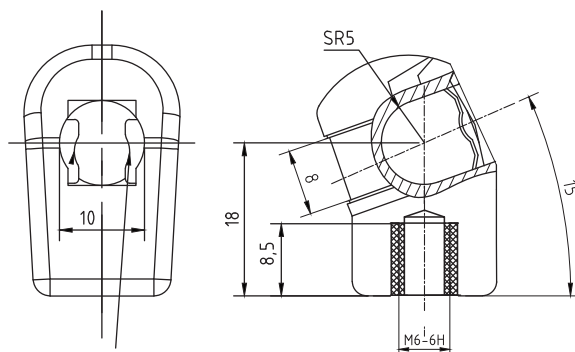
FINISH
ZP



Plastic End Fitting GSPE10A

MATERIAL
Plastic

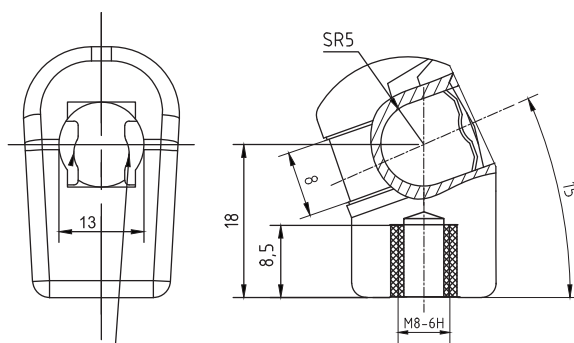
FEATURE
10mm x 6mm shaft angled



Plastic End Fitting GSPE13A

MATERIAL
Plastic

FEATURE
13mm x 8mm shaft angled



Door Retainer

542104, 543004

MATERIAL

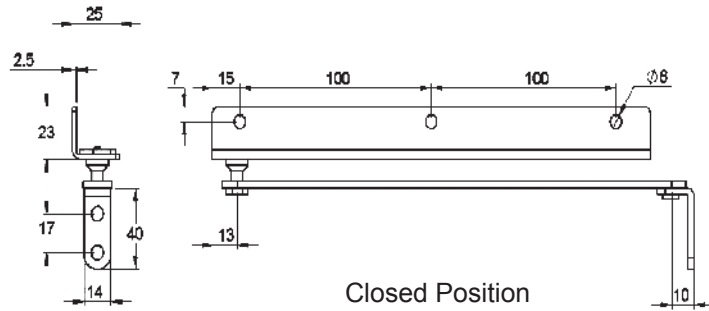
542104 - Steel
543004 - Stainless Steel

FINISH

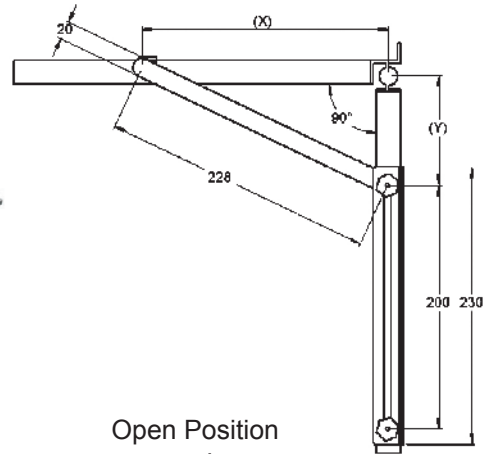
542104 - ZP
543004 - Raw

FEATURES

Heavy duty door retainer. The door retainer automatically locks at the end position. Universal left or right hand application. Screw-in or weld-on mounted.



Closed Position



Open Position

DOOR RETAINER			
Opening Angle	X	Y	Minimum door width in mm
90°	140	180	403
105°	120	166	389
120°	110	150	373
135°	100	146	369

Telescopic Support Stay

7-3099, 7-03098

MATERIAL

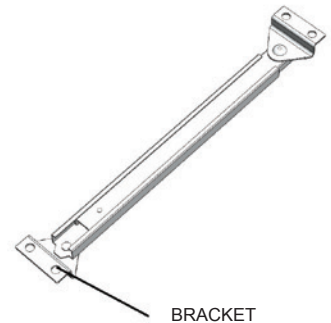
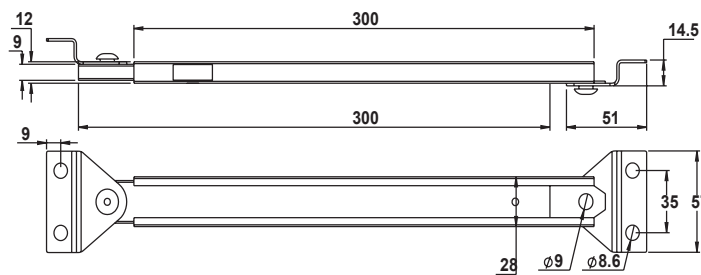
Steel

FINISH

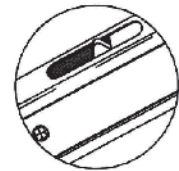
ZP

FEATURES

290/495mm
7-3099 - Bottom bracket only.
7-03098 - 2 Brackets.



BRACKET



Detailed view of 'star wheel' area.

Support Stays 'Star-Wheel' Release

This range of extensible stays provides a simple, inexpensive and long-lasting method of supporting top-hinged doors and hatches. The 'star-wheel' design allows automatic release - useful where two stays are fitted on a very wide panel. Many options are available.

Features:

- Stay extends as door is opened and locks in the extended position. It is automatically released by a further slight extension, allowing unit to be closed.
- Clear zinc-plated. To special order, yellow passivate or black zinc-plated.
- Standard brackets (7/03094) as illustrated for plant-on fitting.
- Mild steel throughout.

Telescopic Support Stay "Safety Catch" Release 7-25621

MATERIAL

Steel

FINISH

ZP

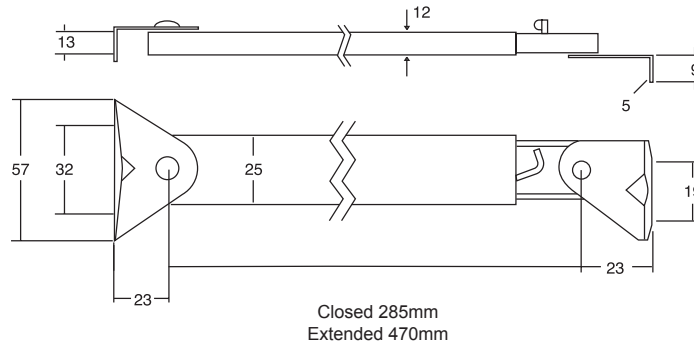
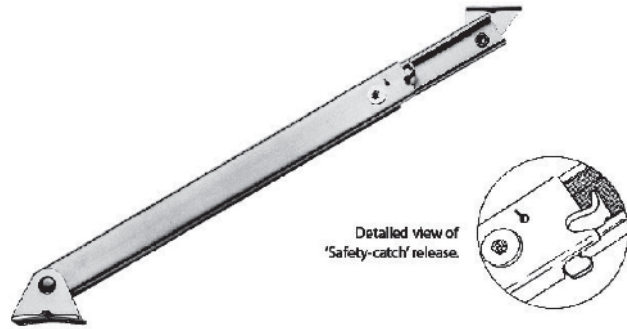
FEATURES

285/470 mm
2 x Brackets

This standard model is representative of a family of stays for top-hinged doors and hatches. The 'safety-catch' design means the stay must be manually released - a useful precaution against vibration or accidental closure.

Features include:

- Stay extends as door is opened and locks in the extended position. The safety catch must be depressed manually before it will close.
- Clear zinc-plated. To special order, yellow passivate or black zinc-plated.
- Standard brackets as illustrated for plant-on fitting.
- Mild steel throughout.



Lid Stay w/ Catch RH & LH S-20R, S-20L

MATERIAL

Steel, Brass, Nylon (Washer)

FINISH

Chrome

WEIGHT

125g

FEATURES

Lid stay with ball catch for light weight door.
Catch automatically holds lid in opened position.
Can be installed individually or in pairs.

S-20R: Right Hand

S-20L: Left Hand

