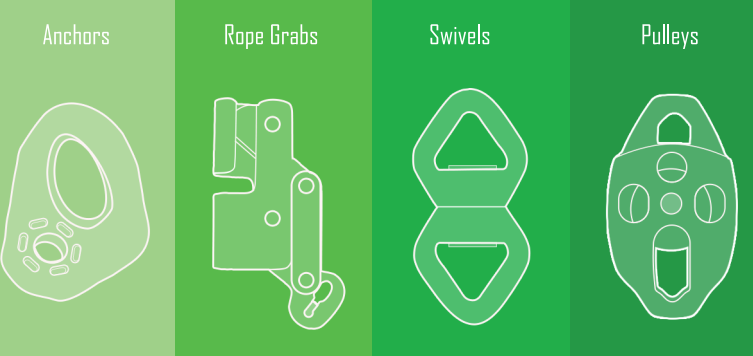


Fusion U.S.A.
4195 Chino Hills Pkwy. #630
Chino Hills, CA 91709
Tel: (909) 393-9450
Fax: (909) 606-6834
Email: info@fusionclimb.com
www.fusionclimb.com

MODEL NUMBER: _____

This packet contains warnings and instructions for the following products



Pulleys

Activities such as mountaineering, rock climbing, rappelling, canyoneering, zip-lines, aerial rescue and work-at-height involving the use of this products are inherently dangerous. You are responsible for your own actions. Before using fusion products, you must:

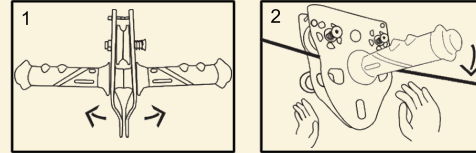
- 1 Read and understand all instructions before use.
- 2 Learn and accept the risks involved.
- 3 Have received qualified instructions or training in its proper use.
- 4 Be acquainted with the product's capabilities and limitations. The trolley is designed to be used in conjunction with a carabiner and harness, handle bars are not to be used as your primary source of support. If you only use the handle bars as your primary source of support, it will lead to you losing grip, fall and serious injury or death could occur. Always use a carabiner and harness as your primary source of support. Handle bars are designed to rest your hands "NOT" to carry your weight. Hanging from the handle bars only and/or putting all your weight on the handle bars may damage the trolley and/or cause you to fall.

Instructions on How to Use

- 1 Make sure to use the proper cable size before installing the trolley. Verify cable size for each pulley/trolley on the unit.
- 2 Make sure installed cable or rope has been checked and verified for safety before putting on the trolley.
- 3 Open trolley for installation by pulling handle bars outward.
- 4 Once the opening of the pulley has been achieved, retain in that position and set the pulley on top of the cable.
- 5 Release the handle bar once the pulley sits on top of the cable.
- 6 Once the pulley is installed, the pulley is ready for use.
- 7 ALWAYS have a backup system in place when using pulley.

General information

Always thoroughly inspect all moving parts on the product before and after each use. If in any doubt of safety issues, replace the product immediately. Do not use the product unless you have been trained to use the product properly by a certified person or instructor. Discontinue use of this product immediately after a fall occurs. Incorrect use, force from a fall, general wear, contact with chemicals or oils, extended exposure to heat/sunlight and incorrect storage may increase the chance in injury or death. Inspect equipment periodically for damage and/or deterioration. Yearly inspection by manufacturer/qualified personnel is highly recommended. Fusion will not be liable for any damages, injury or death resulting from misuse or for items altered or repaired by unauthorized persons. This product does not require special care for transport. Please avoid all contact with corrosive substances, magnetic or energy sources and never leave equipment in a parked car under direct sunlight. Pregnant women should not use this product.



1. Pull outward to open
2. Release to put in position on the cable
3. Latch carabiner on safety lanyard for use

Swivels

Warning

- 1 This product is required to have warning instructions visibly provided to you. If for some reason they are not visible, then do not use the product until you contact Fusion. Warning instructions must be read before using this product.
- 2 Please make reference to the OSHA governing the regulations on occupational safety for workers.
- 3 You cannot use this product if you have not received fall protection training and all other safety training related to work place safety.
- 4 INSPECTION BEFORE AND AFTER EACH USE: Make sure that the parts move freely. Anchoring: The Presto Swivel should be used as part of the fall arrest system. When in use, make sure the anchor is located above the chest height of the user. According to ANSI Z359.1-2007, anchors must be rated to support 5000 lbs of force for use. Do not use an anchor that is not rated. Maximum safe working load for the product is 5KN which is equivalent to 1100 lbs. Do not exceed this limit. Only use anti-rotation cable if cable is going to be used in conjunction with the product.
- 5 This product must also be visually inspected not only from you, but also from another trained individual prior to use. If the product shows any cuts, wear, structural change, tear, or indication of earlier use and abuse, it must be replaced immediately! Do not try to replace or repair worn out parts with other accessories.
- 6 This product is designed and use as part of a system for fall protection only. If you use this product for anything other than fall protection (i.e. towing, hoisting, leveraging) then you are at your own risk of injury or death.
- 7 Do not use this product near high voltage environments, or shock hazardous environments.
- 8 Do not use this product if you are a minor or pregnant, or with a pre-existing health condition or problem.
- 9 Always have a rescue plan ready for back-up when the product is implemented for usage.
- 10 Avoid rubbing product against abrasive surfaces.
- 11 Do not use this product near moving machinery, to reduce the hazard of entanglement.
- 12 The material on this product is strong, yet is highly recommended that there is protection from slag, hot sparks, open flames, and harmful chemicals or corrosive.

Performance, Limitations, and Compatibility

Inspect before each use. Do not use if wear or damage is present. This product is intended to be used as part of a fall, it is required that the product immediately be destroyed or removed from service. All connecting snaps, carabiners, ovals, and all connecting components must be compatible in shape, size, and strength. This item is not flame or heat resistant. Do not modify this product in ANY WAY.

Storage

After cleaning, store the product in a cool, dry dark place. Avoid salty atmospheres, high humidity, corrosive substances or other damaging conditions.

Lubrication

All moving parts must be lubricated frequently with silicone-based oil only. This operation must be done only after the unit has been cleaned and dried completely.

Cleaning

Rinse the product frequently in lukewarm fresh water, followed by some neutral detergent. Leave it to air dry.

Instructions

Before each use, make sure that the sheaves turn freely, verify the condition of the fixed side pieces, sheaves grooves and axles. The installation and use of steel cable rope requires the ability of a competent, trained or qualified professional, do not attempt to install this unit without training or a certified specialist. A steel cable rope creates much greater stress on anchor points than a rope. The anchors must always be separated, with one anchor for the safety rope, and one for the working rope. The proper cable/rope diameter to use with pulley is between 9-13 mm. For long traverses, the two lines should be well separated. When using products, always make sure the products are in the right direction of load. The strength is measured in KN (kilonewtons), which is a measurement of pounds per square inch and imitates the force of a fall.

Cleaning

Rinse the product frequently in lukewarm fresh water follow by some neutral detergent. Leave it to air dry.

Lubrication

All moving parts must lubricate moving parts frequently with silicone-based oil only. This operation must be done only after the unit has been cleaned and dried completely..

Storage

After cleaning, store the product in a cool, dry dark place. Avoid salty atmospheres, high humidity, corrosive substances or other damaging conditions.

Usage Lifetime

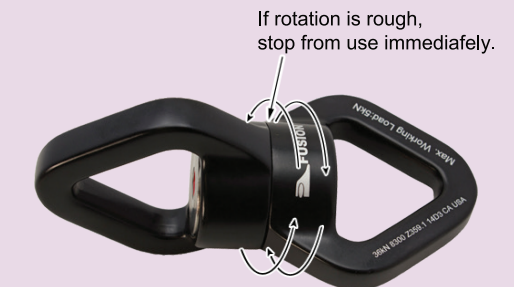
A fall can reduce the lifetime of the product to one single use; for example, if it is exposed to any of the following: chemicals, extreme temperatures, sharp edges, major fall or load, etc. For intense use, the pulley should be replaced every 12 months. For normal use, the pulley should be replaced every 24 months. A visual inspection must be conducted before each use. Do not use the product if the product appears to be unsafe for use.

Disclaimer

The customer accepts full responsibility for any and all incidents, accidents, injuries, deaths, and property damage that may and probably will occur during the building and operating of your zip line, ropes course, adventure course, climbing wall, or anything you have built using gear, equipment, or information purchased or acquired from any representative, this web site or any affiliate site or company. Seek professional and competent advice if you

Usage Lifetime

A fall can reduce the lifetime of the product to one single use; for example if it is exposed to any of the following: chemicals, extreme temperatures, sharp edges, major fall or load, etc. For intense use, the product should be replaced every 12 months. For normal use, the product should be replaced every 24 months. A visual inspection must be conducted before each use. Do not use this product if it appears to be unsafe for use.



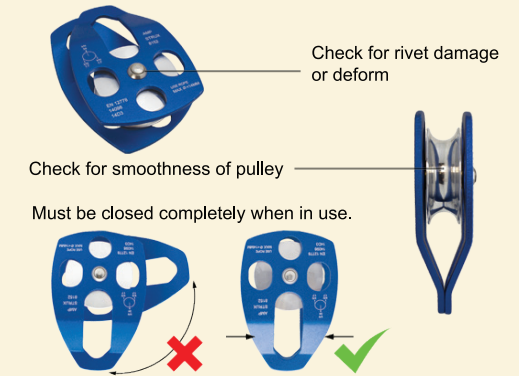
Rope Grabs

Warning

- 1 Please make reference to the OSHA governing the regulations on occupational safety for workers.
- 2 You cannot use this product if you have not received fall protection training and all other safety training related to work place safety.
- 3 This product must also be visually inspected not only by you, but also from another trained individual prior to use. If the product shows any cut, wear, structural change, tearing or indication of earlier use and abuse, it must be replaced immediately! Do not try to replace or repair worn out parts with other accessories.
- 4 This product is designed and used as part of a system for fall protection only. If you use this product for anything other than fall protection (i.e. towing, hoisting, leveraging) then you are at your own risk of injury or death.
- 5 Do not use this product near high voltage environment, or shock hazardous environment.
- 6 Do not use this product if you are a minor or pregnant, or with a pre-existing health condition or problem.
- 7 Always have a rescue plan ready for back-up when the product is implemented for usage.
- 8 Avoid rubbing product against abrasive surfaces.
- 9 Do not use this product near moving machinery, to reduce the hazard of entanglement.
- 10 This product is strong, yet it is highly recommended that there is protection from slag, hot sparks, open flames, and harmful chemicals or corrosive materials. If you are using product number: FP-7208, make sure that you
- 11 DO NOT disconnect or alter the attached components during operation. If the user disregards the warnings for this product, it could lead to serious injury or even death. We are not responsible for any injury or death from improper use or neglect from the user.
- 12 Store this product in a cool temperature environment when not in use (22-30 degrees Celsius or 60-75 degrees Fahrenheit).

DO NOT

- 1 Load more than 310 lbs.
- 2 Hang, using only a single device, always have a backup system in place.
- 3 Use this product for self-belay by a single climber.
- 4 Use this product for use on steel cable.
- 5 Remove the screws in the cam.
- 6 Remove the cam spring.



Warnings

- 1 Activities at height are dangerous activities which may lead to severe injury or death.
- 2 Gaining an adequate apprenticeship in appropriate techniques and methods of safety is your own responsibility.
- 3 You personally assume all risks and responsibility for all damage, injury, or death which may occur during or following ill use of these products in anyway whatsoever.
- 4 If you are not able, or not in a position to assume this responsibility or to take this risk, do not use this equipment.
- 5 This product must only be used by competent and responsible persons, or those placed under the direct and visual control of a competent and responsible person.
- 6 Check that this product is compatible with the other components of your equipment.
- 7 To prolong the life of this product, care in use is necessary. Avoid rubbing against abrasive surfaces or sharp edges.

Performance, Limitations, and Compatibility

- 1 Use only with ANSI & OSHA compliant fall arrest system.
- 2 Not intended to be used as a permanent installed anchor.
- 3 Failure to read and follow instruction on the use of this product could result in serious personal injury or death. This product must be used in strict compliance with Local, State, Federal, and OSHA regulations.
- 4 Maximum anchor capacity is 1 person.
- 5 Anchors should be inspected before and after each use.
- 6 Rusted anchors must be removed from service and be destroyed.
- 7 Install anchor in accordance with instruction supplied with this product.
- 8 Never use an open rafter/truss construction.
- 9 Anchors subject to a fall must be removed from service and be destroyed.

Storage, Cleaning, and Maintenance

A dirty product should be washed and rinsed in clean water, then dried. It must not be put in contact with corrosive or aggressive materials, or stored at extreme temperatures. All chemical products, corrosive materials and solvents should be regarded as harmful.

Usage Lifetime

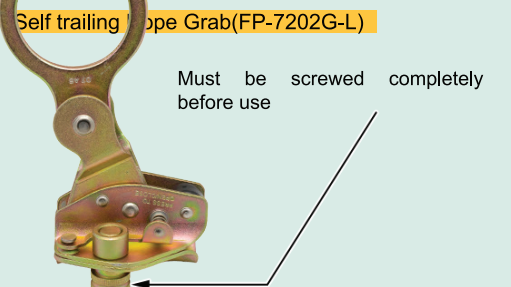
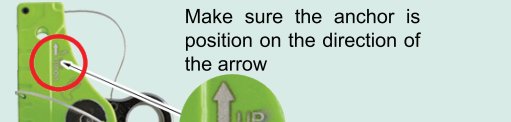
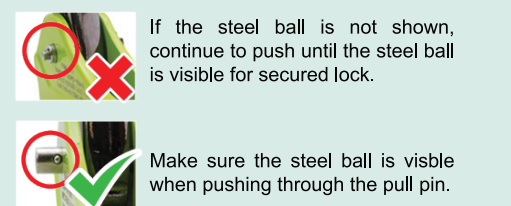
Equipment deteriorates progressively with use. It is difficult to give a precise lifetime because it depends on the environment where it is used (mountains, sea, cave, canyon, sand, etc.) However wear or damage could occur on the first use which limits its life to that use. Surface damage, mechanical wear, corrosive wear, or impairment of the mechanical function of the product is easily observed.



Usage Lifetime

A fall can reduce the lifetime of the product to one single use; for example, if it is exposed to any of the following: chemicals, extreme temperatures, sharp edges, major fall or load, etc. For intense use, the product should be replaced every 12 months. For normal use, the product should be replaced every 24 months. A visual inspection must be conducted before each use. Do not use this product if it appears to be unsafe for use.

Warning for FP-7208



© 2011 Fusion™ All right reserved
Choose to make a difference-Recycle!
We only Print on recycled and chlorine-free papers. We believe in providing an environmentally an economically sound alternative for paper and printing. Please help us by maintaining the demand for the recycled waste.

- 1. Pulleys
- 2. Anchors
- 3. Swivels
- 4. Rope Grabs
- (a) Warnings
- (b) Dots and Dots
- (c) Performance, Limitations, and Compatibility
- (d) Storage, Cleaning, and Maintenance
- (a) Warnings
- (b) Performance, Limitations, and Compatibility
- (c) Storage, Cleaning, and Maintenance
- (d) Usage Lifetime
- (a) Warnings
- (b) Performance, Limitations, and Compatibility
- (c) Storage, Cleaning, and Maintenance
- (d) Usage Lifetime
- (a) Warnings
- (b) Performance, Limitations, and Compatibility
- (c) Storage, Cleaning, and Maintenance
- (d) Usage Lifetime
- (a) Warnings
- (b) Performance, Limitations, and Compatibility
- (c) Storage, Cleaning, and Maintenance
- (d) Usage Lifetime
- (a) Warnings
- (b) Performance, Limitations, and Compatibility
- (c) Storage, Cleaning, and Maintenance
- (d) Usage Lifetime
- (a) Warnings
- (b) Performance, Limitations, and Compatibility
- (c) Storage, Cleaning, and Maintenance
- (d) Usage Lifetime
- (a) Warnings
- (b) Performance, Limitations, and Compatibility
- (c) Storage, Cleaning, and Maintenance
- (d) Usage Lifetime
- (a) Warnings
- (b) Performance, Limitations, and Compatibility
- (c) Storage, Cleaning, and Maintenance
- (d) Usage Lifetime

Table of Contents

BOOK # 2 FWB-002

VER:FH02717