



JLX ACCESSORIES

for Explosion Proof Luminaires



1. Junction Box



2. Pole Pendant



3. Bended Pipe



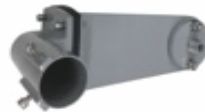
4. Slip Fitter Mount



5. Hook



6. 25° Stanchion



7. 90° Stanchion



8. Arm Mount



9. 25° Wall Arm w/ Junction Box



10. 90° Wall Arm w/ Junction Box

Product Information:

Product	Product SKU	Description	Series Compatibility
1. Junction box	EX-HD51-KB1	Junction Box	A, B, C, D, E, F, G, H, I, O
2. Pole Pendant	Ex-Straight Pipe	Straight pipe $\varnothing 25.4"$, 3/4" NPT	A, B, C, D, E, F, G, H, I, O
3. Bended Pipe	Ex-Bended Pipe	Bended pipe $\varnothing 25.4"$, 3/4" NPT	A, B, C, D, E, F, G, H, I, O
4. Slip Fitter	EX-Slip Fitter	Slip Fitter Mounting Kit	A, B, C, D, H, I
5. Hook	Ex-Hook	Hook	A, B, C, D, E, F, G, H, I, O
6. 25° Stanchion	EX-25PSupport	25° Stanchion Mounting	A, B, C, D, E, F, G, H, I, O
7. 90° Stanchion	EX-90PSupport	90° Stanchion Mounting	A, B, C, D, E, F, G, H, I, O
8. Arm Mount	EX-Marm	Wall Arm mounting	A, B, C, D, E, F, G, H, I, O
9. 25° Arm	EX-HD51-KYD 25°	25° Arm with junction box	A, B, C, D, E, F, G, H, I, O
10. 90° Arm	EX-HD51-KYD 90°	90° Arm with junction box	A, B, C, D, E, F, G, H, I, O

Note: 4. Slip Fitter is not compatible with B4, C3, and I4 series.