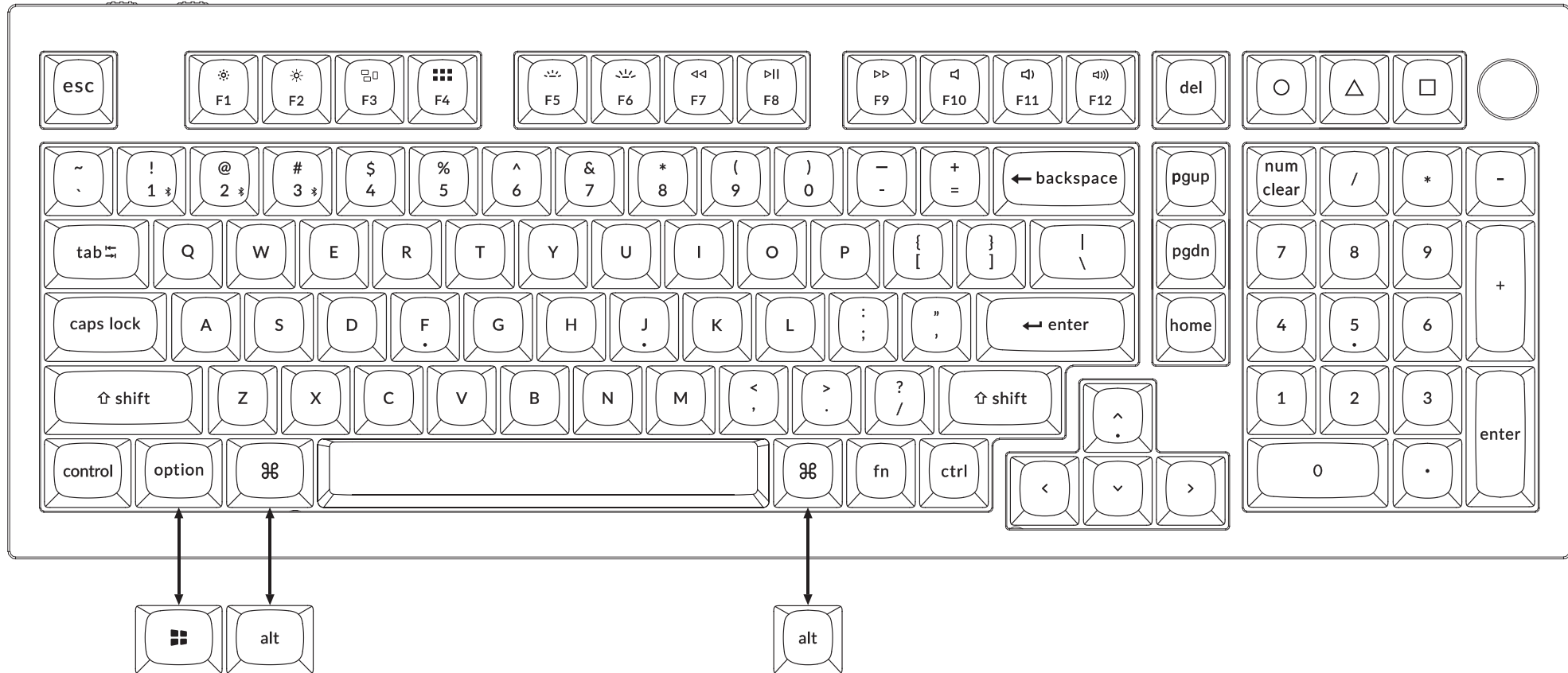
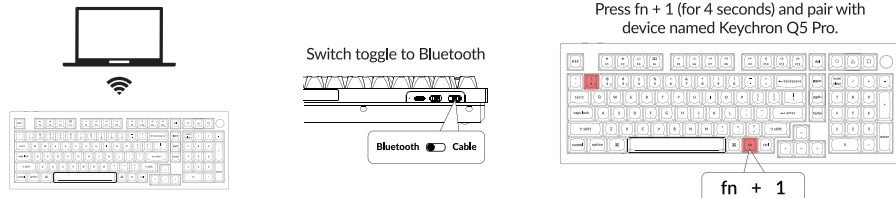


If you are a Windows user, please find the appropriate keycaps in the box, then follow the instructions below to find and replace the following keycaps.

Quick Start Guide



1 Connect Bluetooth



3 The VIA Key Remapping Software

Please visit caniusevia.com to download the latest VIA software to remap the keys. If the VIA software cannot recognize your keyboard, please reach out to our support to get the instruction. (VIA only works when the keyboard is connected by wire to the computer.)



2 Connect Cable

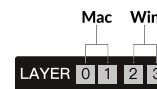


4 The Layers

There are four layers of key settings on the keyboard. The layer 0 and layer 1 are for the Mac system. The layer 2 and layer 3 are for the Windows system.

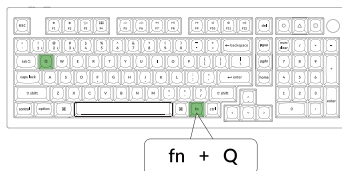
If your system toggle is switched to Mac, then the layer 0 will be activated.

If your system toggle is switched to Windows, then the layer 2 will be activated. Remember that if you are using it in Windows mode, please make changes to the layer 2 instead of the top layer (the layer 0). This is a common mistake people are making.

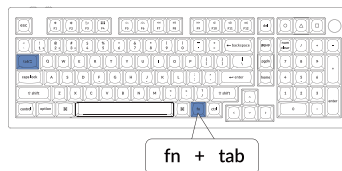


5 The Backlight

Press fn + Q to change the lighting effect

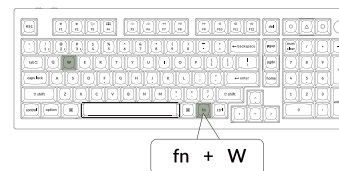


Press fn + tab to turn the backlight on/off

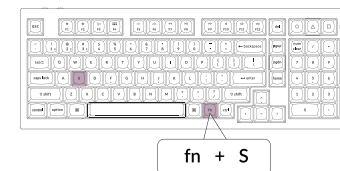


6 Adjust The Backlight Brightness

Press fn + W to increase the backlight brightness

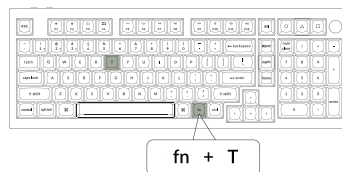


Press fn + S to decrease the backlight brightness

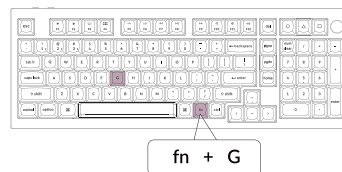


7 Adjust The Backlight Speed

Press fn + T to increase the light effect speed



Press fn + G to decrease the light effect speed



8 Warranty

The keyboard is highly customizable and easy to be rebuilt. If anything goes wrong with any of the keyboard components of keyboard during the warranty period, we will only replace the defective parts of the keyboard, not the whole keyboard.



9 Watch The Building Tutorial On Our Website

If you are building the keyboard for the first time, we highly recommend you watch the building tutorial video on our website first, then start building the keyboard yourself.



10 Factory Reset



Troubleshooting? Don't know what's going on with the keyboard?

- 1 Plug in the power cable and switch the keyboard to Cable mode.
 - 2 Factory reset the keyboard by pressing fn + J + Z (for 4 seconds).
 - 3 Download the right firmware and QMK Toolbox from our website.
 - 4 Switch the keyboard to OFF mode and remove the space bar keycap to find the reset button on the PCB.
 - 5 Hold the reset key first, then switch the keyboard to Cable mode. Release the reset key, and the keyboard will now enter DFU mode.
 - 6 Flash the firmware with the QMK Toolbox.
 - 7 Factory reset the keyboard again by pressing fn + J + Z (for 4 seconds).
- * Step by step guide can be found on our website.

Not Happy

support@keychron.com