



CLEAN



CRUELTY-FREE



VEGAN



PARABEN-FREE

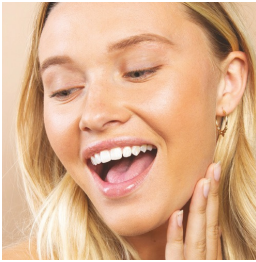


GLUTEN-FREE



RECYCLABLE

### light

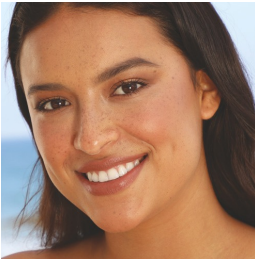


This **Light** Highlighter Pencil compliments most fair, light and even some light/medium skin tones.

#### SHADE CHARACTERISTICS

- Lightest shade in the line.
- Most popular shade.

### medium

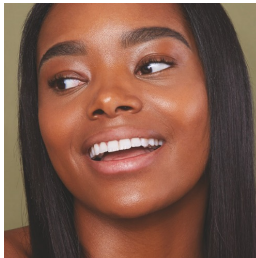
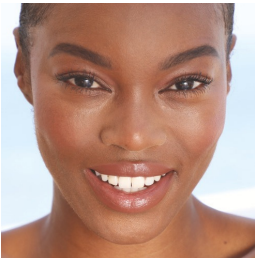


This **Medium** Highlighter Pencil compliments medium skin tones.

#### SHADE CHARACTERISTICS

- Peach undertone.
- Ideal for medium skin tones or for someone with a tan.

### dark

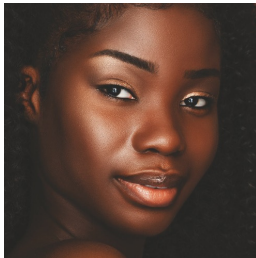


This **Dark** Highlighter Pencil is best for dark skin tones.

#### SHADE CHARACTERISTICS

- Never ashy, but brightens with a neutral peach undertone.
- Great for creating contrast on darker skin tones.

### deep



This **Deep** Highlighter Pencil is the perfect shade for deep skin tones

#### SHADE CHARACTERISTICS

- Neutral undertone.
- Never ashy or orange.

### light & dark shimmer



The **Shimmer** Highlighter Pencils come in two shades, **Light** and **Dark** and are very versatile. Both highlighter shades can be used on any skin tone.

#### SHADE CHARACTERISTICS

- Neutral undertones.
- Gives the perfect shimmer to any look.