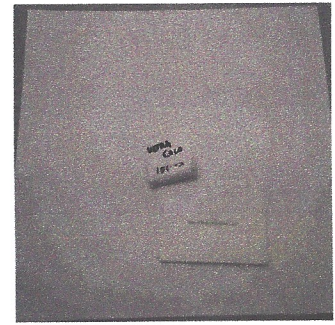




Customer:
 Customer Sample ID: **Ultra Coco**
 Laboratory Number: **20A0151-03**

Density: **0.952**

2oz / 500mg



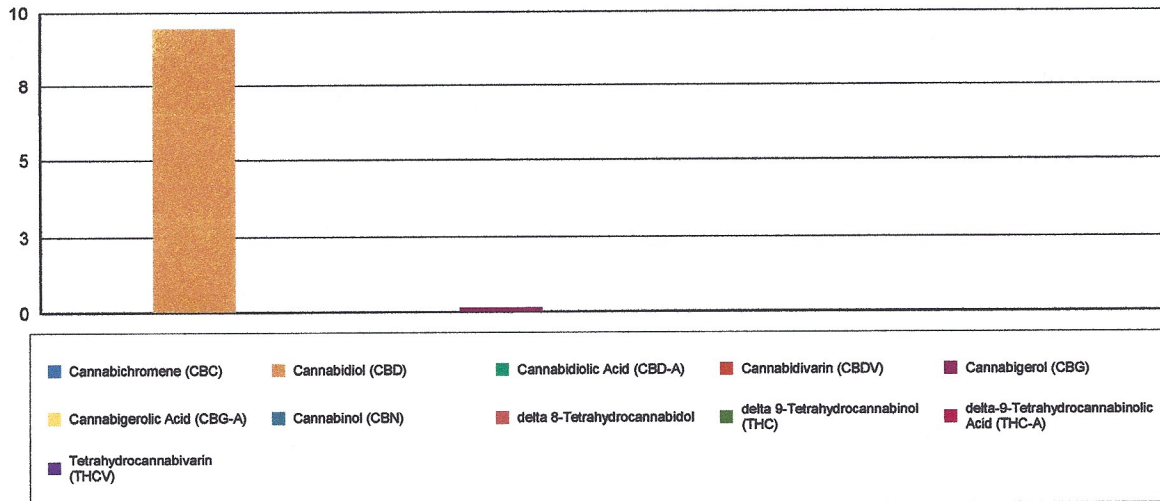
Cannabinoid Profile

Extraction Technician: RH
 Analytical Chemist: CB

Extraction Date(s)	Analysis Date(s)
1/15/2020	1/15/2020

Cannabinoids (HPLC)		Results	
	LOD (mg/mL)	%	mg/mL
Cannabidiol (CBD)	<0.040		
Cannabidiolic Acid (CBD-A)	<0.040		
Cannabigerolic Acid (CBG-A)	<0.040		
Cannabigerol (CBG)		0.01	0.150
Cannabidiol (CBD)		0.94	9.44
Tetrahydrocannabivarin (THCV)	<0.040		
Cannabinol (CBN)	<0.040		
delta 9-Tetrahydrocannabinol (THC)	<0.040		
delta 8-Tetrahydrocannabidol	<0.040		
Cannabichromene (CBC)	<0.040		
delta-9-Tetrahydrocannabinolic Acid (THC-A)	<0.040		
Cannabinoids Total		%	mg/mL
Max Active THC		0.00	0.00
Max Active CBD		0.94	9.44
T.Active Cannabinoids		0.96	9.59
Total Cannabinoids		0.96	9.59
Ratios			
NA: 1 CBD to THC		0.00:1 THC to CBD	

Cannabinoid (mg/mL)



Altitude Consulting, LLC utilizes NIST traceable Reference Standards and Certified Reference Material to calibrate analytical instruments along with proven analytical methods. The methods are applied in the most ethical manner following good laboratory practice guidelines. The results of this report are based solely on the sample submitted and cannot be reproduced.