



Customer: **High Altitude Wellness**
 Customer Sample ID: **FV Tinc 500 M 8/2**
 Laboratory Number: **19H0036-02**

Density: **0.9402**

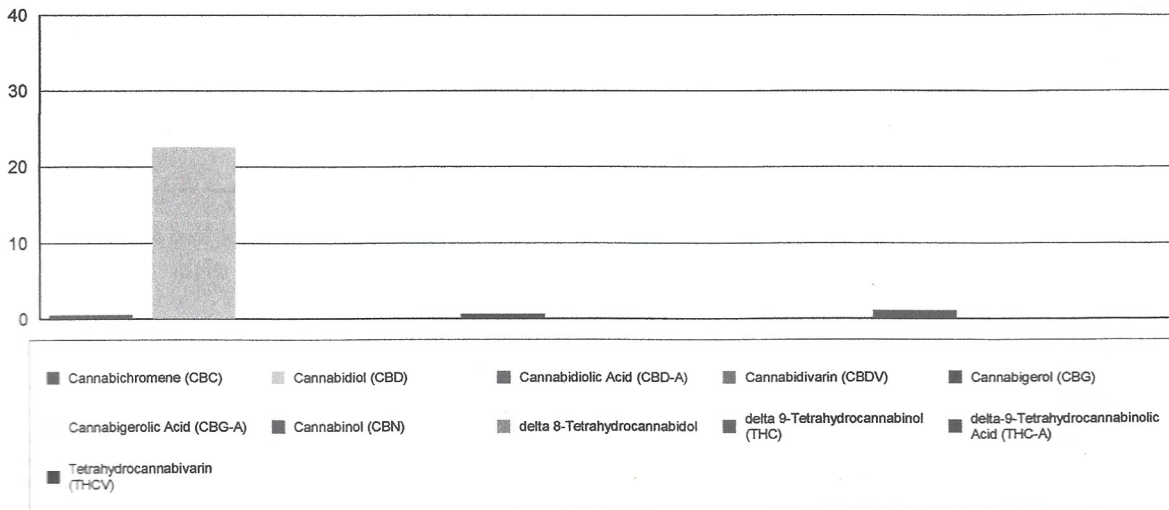
Cannabinoid Profile

Extraction Technician: MF
 Analytical Chemist: Altitude

Extraction Date(s)	Analysis Date(s)
8/5/2019	8/5/2019

Cannabinoids (HPLC)		Results	
	LOD (mg/mL)	%	mg/mL
Cannabidivarin (CBDV)	<0.084618		
Cannabidiolic Acid (CBD-A)	<0.084618		
Cannabigerolic Acid (CBG-A)	<0.084618		
Cannabigerol (CBG)		0.06	0.644
Cannabidiol (CBD)		2.25	22.5
Tetrahydrocannabivarin (THCV)	<0.084618		
Cannabinol (CBN)		0.01	0.106
delta 9-Tetrahydrocannabinol (THC)		0.11	1.08
delta 8-Tetrahydrocannabinol	<0.084618		
Cannabichromene (CBC)		0.05	0.512
delta-9-Tetrahydrocannabinolic Acid (THC-A)	<0.084618		
Cannabinoids Total		%	mg/mL
Max Active THC		0.11	1.08
Max Active CBD		2.25	22.50
T.Active Cannabinoids		2.48	24.8
Total Cannabinoids		2.49	24.9
Ratios			
20.92:1 CBD to THC		0.05:1 THC to CBD	

Cannabinoid (mg/mL)



Altitude Consulting, LLC utilizes NIST traceable Reference Standards and Certified Reference Material to calibrate analytical instruments along with proven analytical methods. The methods are applied in the most ethical manner following good laboratory practice guidelines. The results of this report are based solely on the sample submitted and cannot be reproduced.