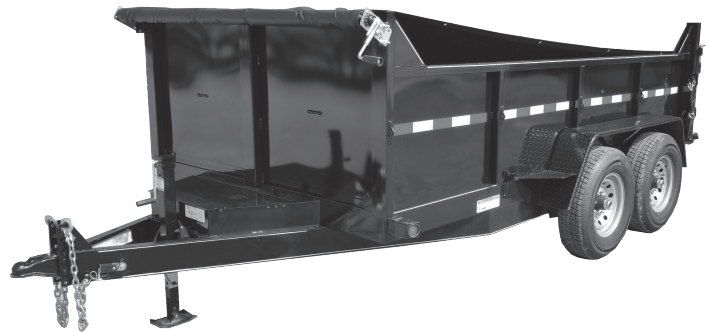


Installation Instructions

DTT7018S Dump Trailer Tarp Kit

1. Assemble the Driver Side – Fig 1.
 - A. Install the Sprocket onto the shaft of the Crank Handle past the hole
 - B. Insert the assembled Crank Handle through the Driver Side Mounting Plate Assembly
 - C. Align the hole in the Crank Handle shaft with the hole in the Driver Side Axle Assembly
 - D. Slide a 5/16"-18 Nylon Locking Nut into the channel of the Driver Side Axle Assembly and align with the hole. Note: Nylon end should be facing outward
 - E. Insert a 5/16"-18 x 2-1/4" Hex Head Cap Screw (HHCS) through the hole and tighten.
 - F. Position the Sprocket so that it is aligned with the Pawl then secure in place. Note: The Pawl should be below the sprocket
2. Assemble the Passenger Side – Fig 2.
 - A. Install the Passenger Side Axle Assembly through the Passenger Side Mounting Plate Assembly and temporarily tighten the set screws on the Bearing to hold it in place
3. Complete the Axle Assembly – Fig 3.
 - A. Install the Driver and Passenger Side Assemblies onto the Inner Axle
 - B. Slide (5X) 5-1/6" x 3/4" HHCS into the channel. These will be used to attach the Tarp.
4. Mount the Axle Assembly
 - A. Determine the position to mount the Axle Assembly to the trailer. Note: It should be mounted as far forward as possible to minimize interference when side loading.
 - B. Clamp the Side Plates of the Axle Assembly in place and double check clearance for the fully wound tarp.
 - C. Using a set of pre-drilled holes in the Side Plates, mark the location on the trailer
 - D. Remove the Assembly, drill the holes, and remount using the included hardware.
 - E. Position the Inner Axle so that the Center Collar measurement "X" is the same on the Driver and Passenger sides. Self-Drilling Screws may be used to hold fix this position.
5. Installing the Tarp – Fig 4.
 - A. Line up the previously installed HHCS with the grommets on the end of the Tarp then attach using Fender Washers and Hex Nuts. Note: Ensure that the Tarp is centered and has clearance on both sides for winding.
 - B. The Tarp should be wound over the Axle assembly counter-clockwise (CCW). Check for clearances each time the Tarp is retracted.



- C. Assemble the four S-hooks to the two Rubber Straps. The small end of the s-hook is assembled into the hole in the strap and should be bent around the strap to permanently attach the hook to the strap. The two strap assemblies should be attached to the rear corner holes in the tarp. The large hooks should be bent around the tarp grommets to permanently attach straps to tarp.
6. Operating the System
 - A. To retract the Tarp, rotate the Crank Handle perpendicular with truck and turn CCW. The pawl system will only allow turning in this direction.
 - B. To extend the Tarp, pull the cable attached to the Pawl and hook it over one of the flange bolts. Once clear of the Sprocket the Tarp can be pulled out over the load. When the Tarp is in the desired position, remove the Pawl cable from the flange bolt and it will reengage the Sprocket.

WARRANTY

Buyers Products Co. warrants all truck/trailer hardware manufactured or distributed by it, to be free from defects in material and workmanship for a period of one year from date of shipment. Parts must be properly installed and used under normal conditions. Any product which has been altered, including modification, misuse, accident or lack of maintenance will not be considered under warranty. Normal wear is excluded. The sole responsibility of Buyers Products Co. under this warranty is limited to repairing or replacing any part or parts which are returned, prepaid, and are found to be defective by Buyers Products Co. Authorization from Buyers Products Co. must be obtained before returning any part. No charges for transportation or labor performed on Buyers' products will be allowed under this warranty.

FIGURE 1. DRIVER SIDE

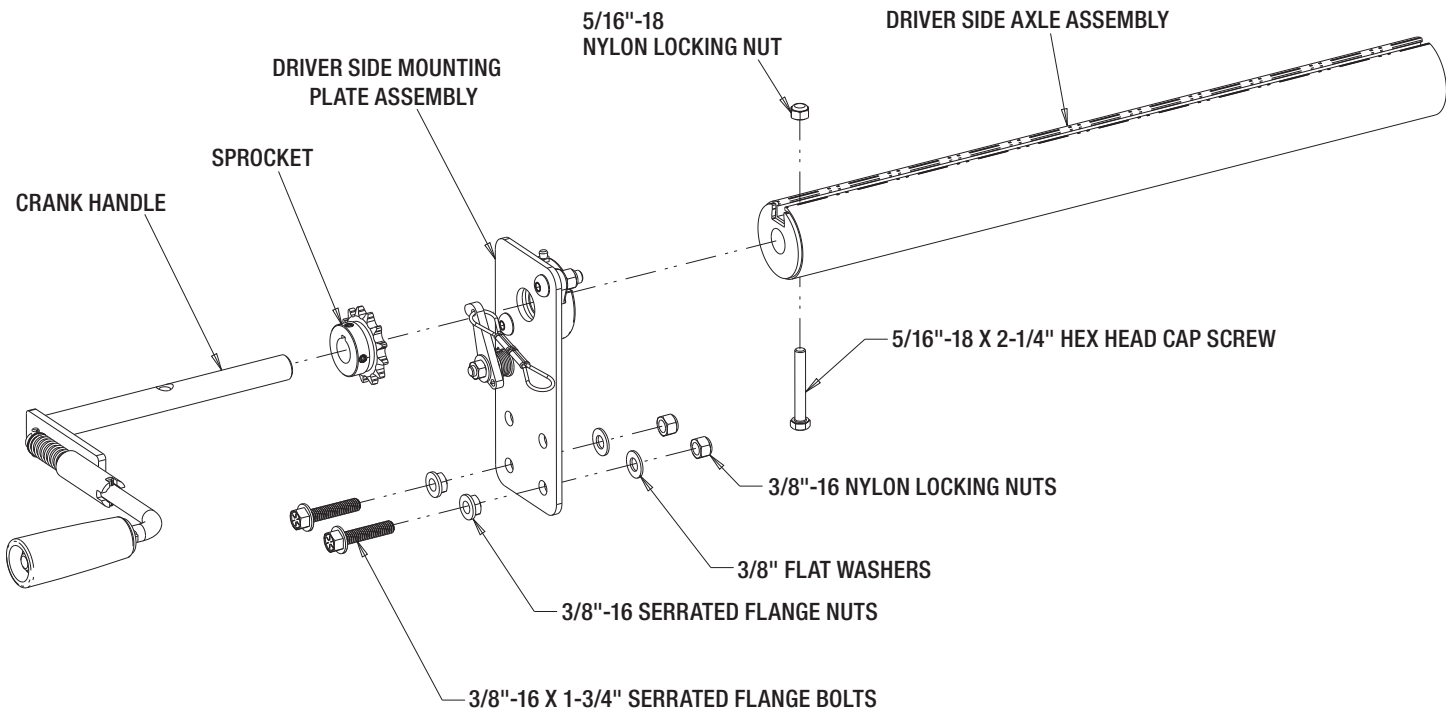


FIGURE 2. PASSENGER SIDE

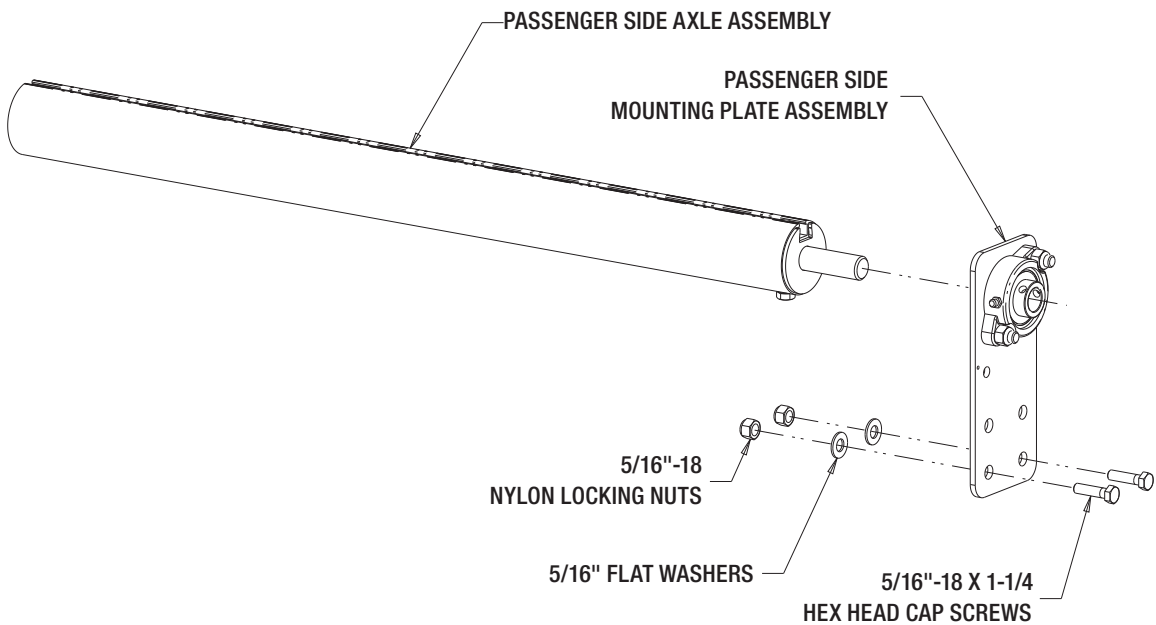


FIGURE 3 COMPLETE AXLE ASSEMBLY

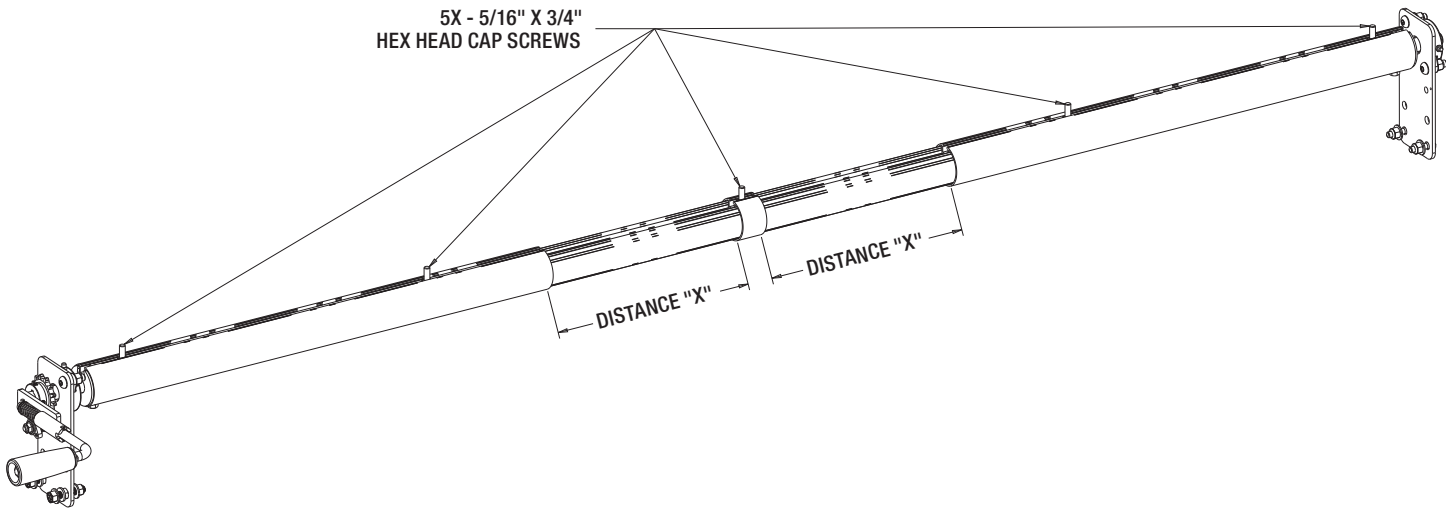
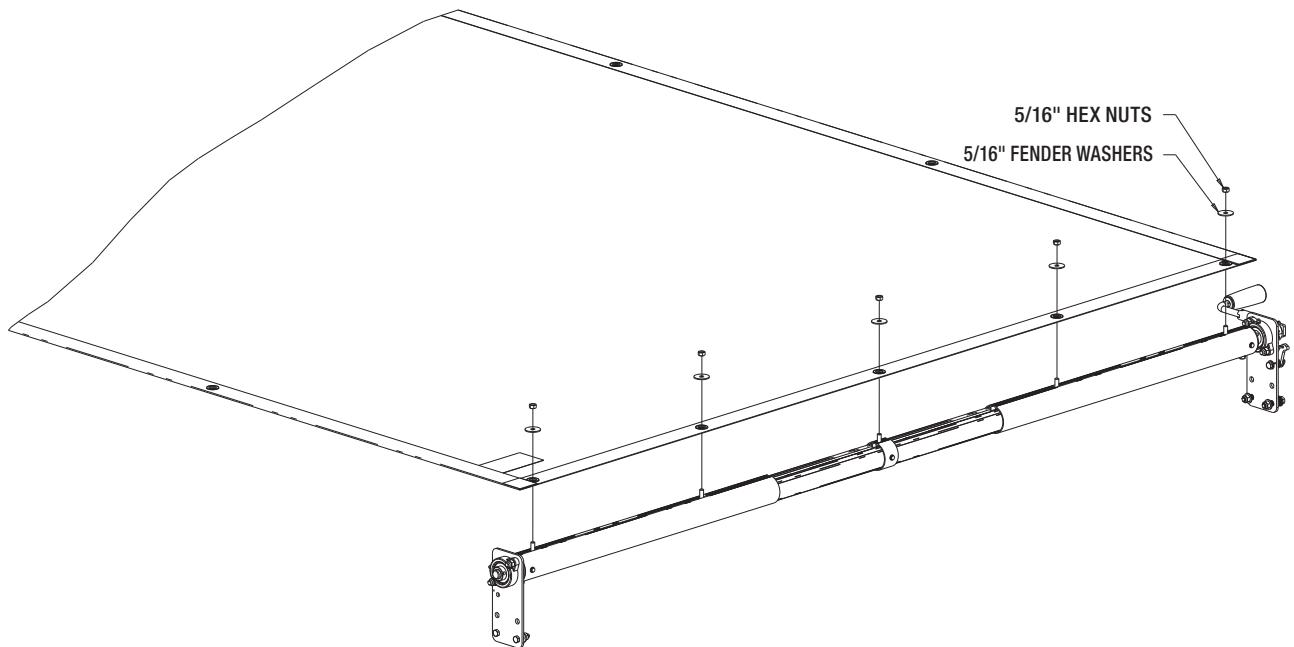
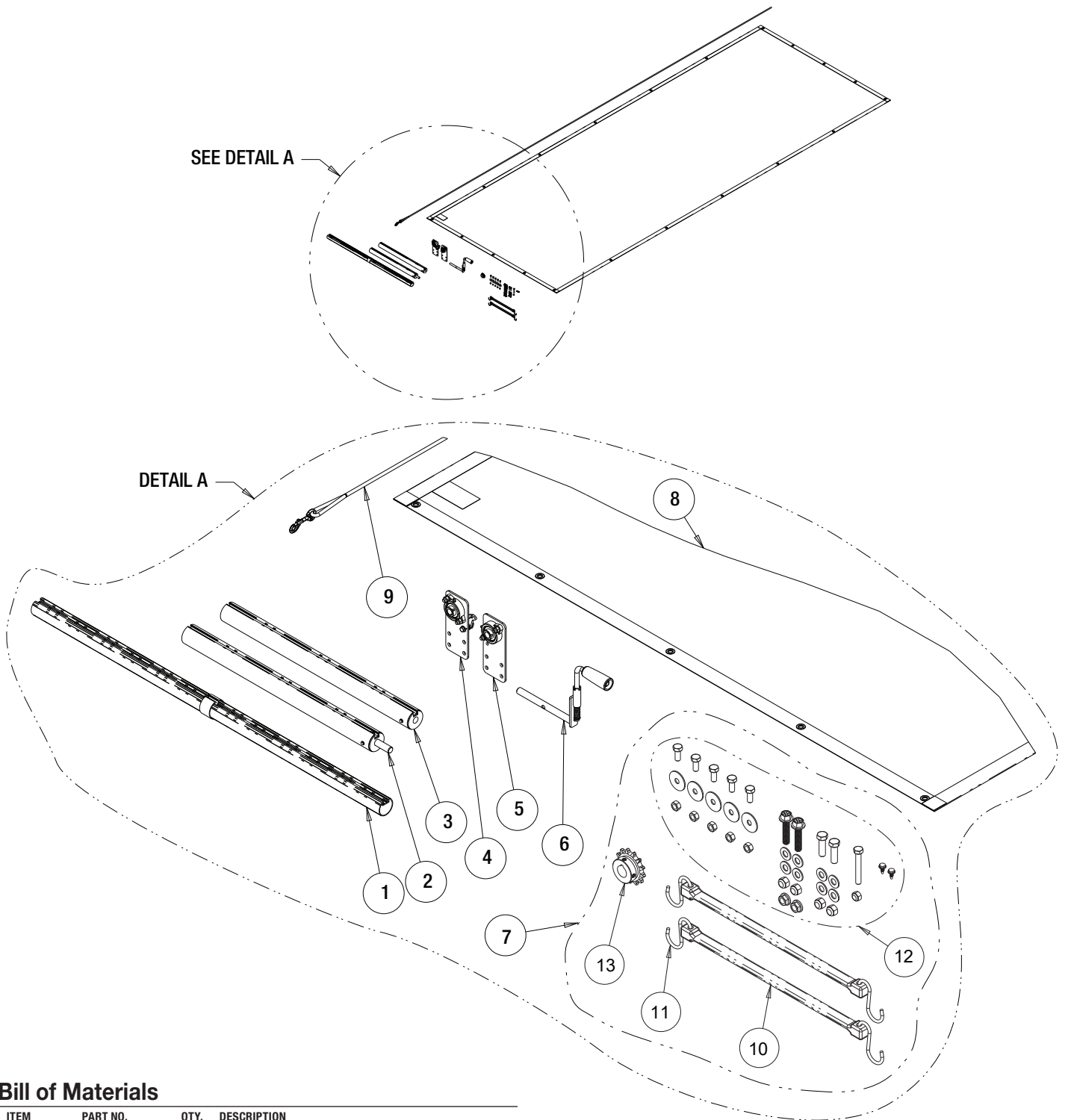


FIGURE 4 INSTALLING TARP





Bill of Materials

ITEM	PART NO.	QTY.	DESCRIPTION
1	3041936	1	CENTER AXLE
2	3039999	1	AXLE ASSEMBLY, PASSENGER SIDE
3	3039998	1	AXLE ASSEMBLY, DRIVER SIDE
4	3039991	1	SIDE PLATE ASSEMBLY, DRIVER SIDE
5	3039992	1	SIDE PLATE ASSEMBLY, PASSENGER SIDE
6	3039990	1	CRANK HANDLE
7	3040000	1	HARDWARE KIT
8	3039982	1	TARP, 7.0FT X 18.0FT BLACK SOLID
9	3008225	1	ROPE ASSEMBLY

Hardware Kit - 3040000

ITEM	PART NO.	QTY.	DESCRIPTION
10	TS15	2	RUBBER STRAP
11	9225	4	S-HOOK, RUBBER STRAP
12	3040001	1	HARDWARE BAG
13	3039986	1	SPROCKET