

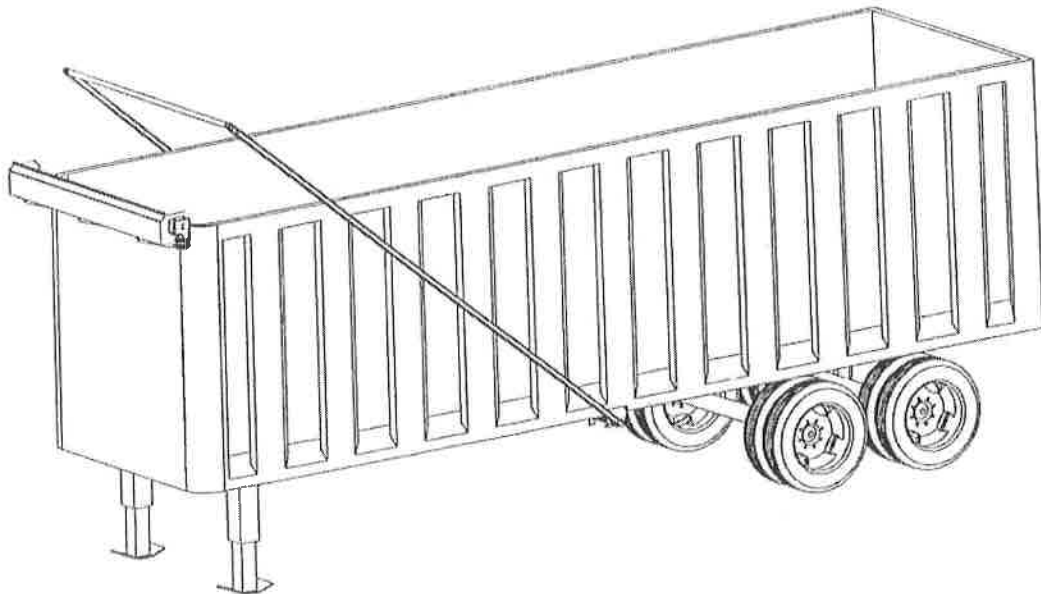


LONG ARM

Automatic Transfer Trailer Tarp Covering System

INSTALLATION INSTRUCTIONS

(PART# 1164 / 1164-102)
FOR TRAILERS UP TO 38' LONG

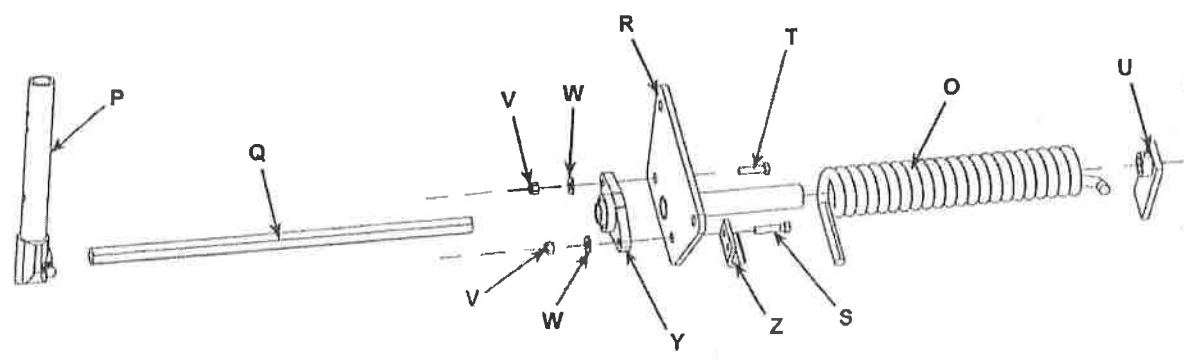
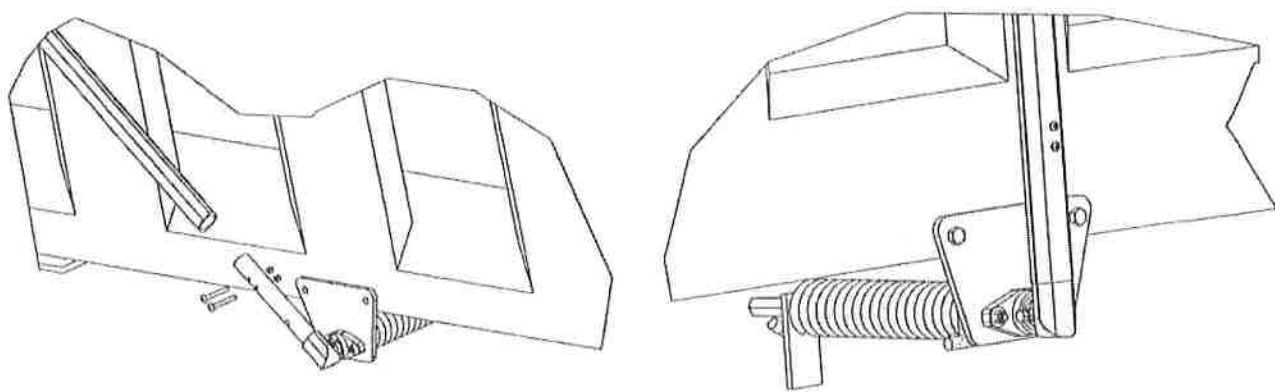
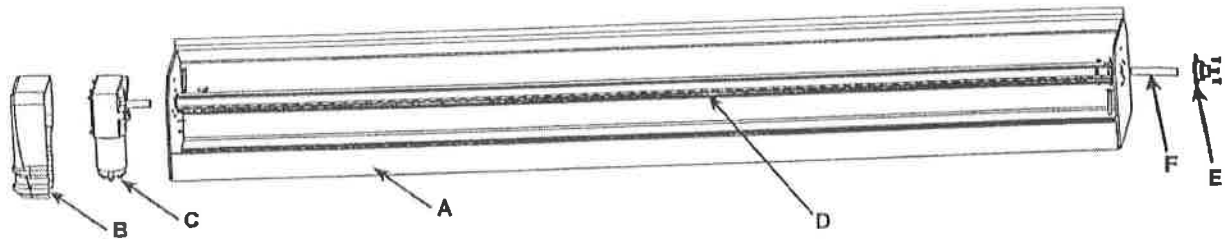


SEPTEMBER 2012



Visit our website for more information www.donovan-ent.com
3353 SE Gran Park Way ■ Stuart, FL ■ 800-327-8287 ■ 772-286-3350 ■ Fax 772-287-0431

Long Arm



Long Arm



LONG ARM SYSTEM INSTALLATION INSTRUCTIONS

BEFORE YOU BEGIN INSTALLATION

- Read and understand all of the owner's manual prior to starting the installation.
- Unpack system and check to ensure you have all the parts and hardware as shown on pages 2 and 3. Contact your dealer if you are missing any parts.

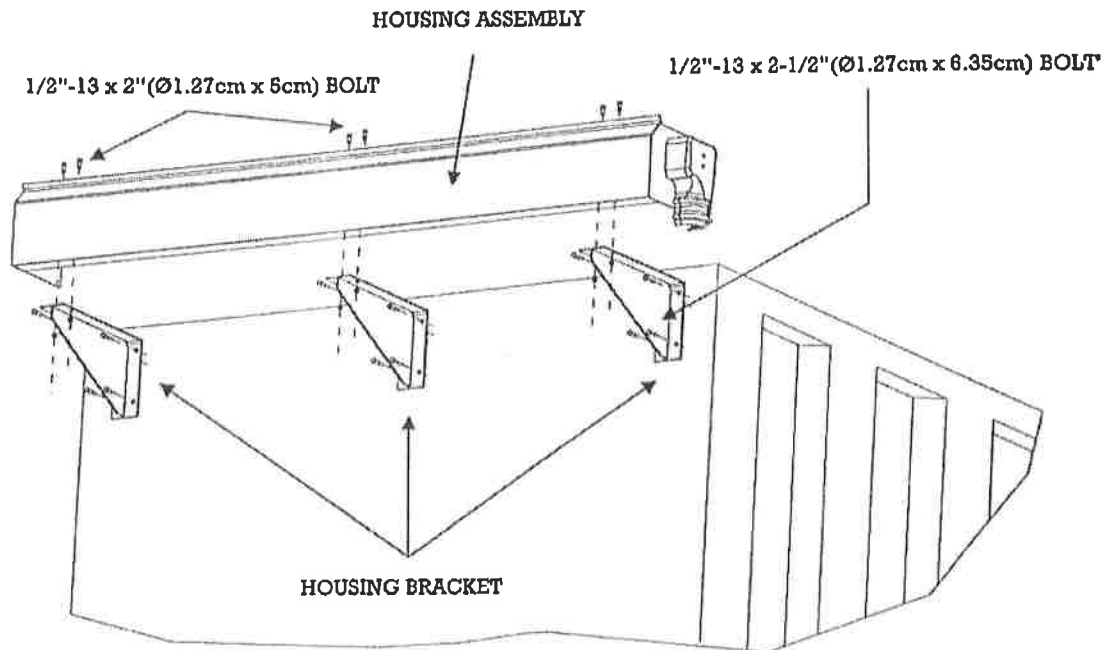


FIGURE 4

MOUNTING THE HOUSING ASSEMBLY

Caution: Housing assembly weighs approximately 72 lbs (33 kg). Seek help when lifting.

- Choosing the Mounting Location: In general, the housing assembly should be mounted as far forward as possible so that the DD motor and pivot arms will be less likely to be damaged by loaders.
- You may either place the housing on top of the front rail (not shown), or use the supplied brackets (recommended), 1/2" - 13 x 2" (Ø1.27 CM x 5 CM) bolts, flat washers, and lock nuts to mount it in front of the trailer (see figure 4). Due to the many variations in trailer configurations, you may choose to use extra brackets, angle iron, or some other technique that works well with your particular trailer design to help support the housing assembly.

NOTE: When bolting or welding the housing brackets, the shorter pre-drilled plate attaches to the trailer front wall.

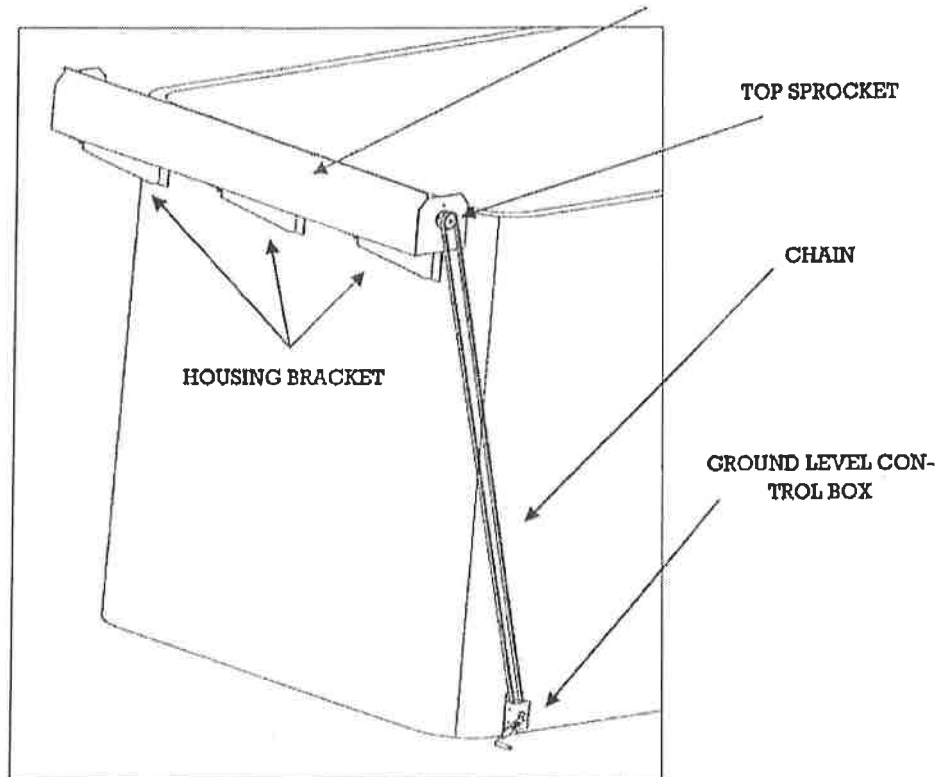
Long Arm



GROUND LEVEL CRANK OPTION

NOTE: If you purchased the motor driven system, then you can skip this page. Continue with the installation on the next page.

HOUSING ASSEMBLY



MOUNTING THE GL CONTROL BOX

1. Determine suitable position for mounting GL control box to front driver's side of trailer. Keep in mind that the top sprocket and bottom sprocket must aligned vertically without any obstacles to obstruct movement of the chain or crank handle. If necessary, tilt control box to prevent chain from rubbing sides of box. Use holes in control box as guide and drill 4 mounting holes in side wall of body.
2. Mount control box to side wall of body using 3/8" x 1 1/2" bolts, lock nuts, and flat washers, do not tighten.
3. Install chain. remove links on chain as necessary to make chain as tight as possible with crank box up as far as possible. Push down on crank box and tighten bolts holding crank box in place.
4. Test crank handle to ensure smooth, easy operation.

Long Arm



MOUNTING THE PIVOT MOUNTS

- To find the pivot point, pull one tape measure from point "A" (corner of housing assembly) and a separate tape measure from point "B" (rear of trailer). Cross the tape measures at the bottom-middle of the trailer body. Move point where the two tape measures cross until both distances (DIM 1 = DIM 2) on the tape measures are equal. Write down this dimension below to be used later. Mark the spot beneath the tape measures where they cross. This is your pivot point. (See Figure 6)

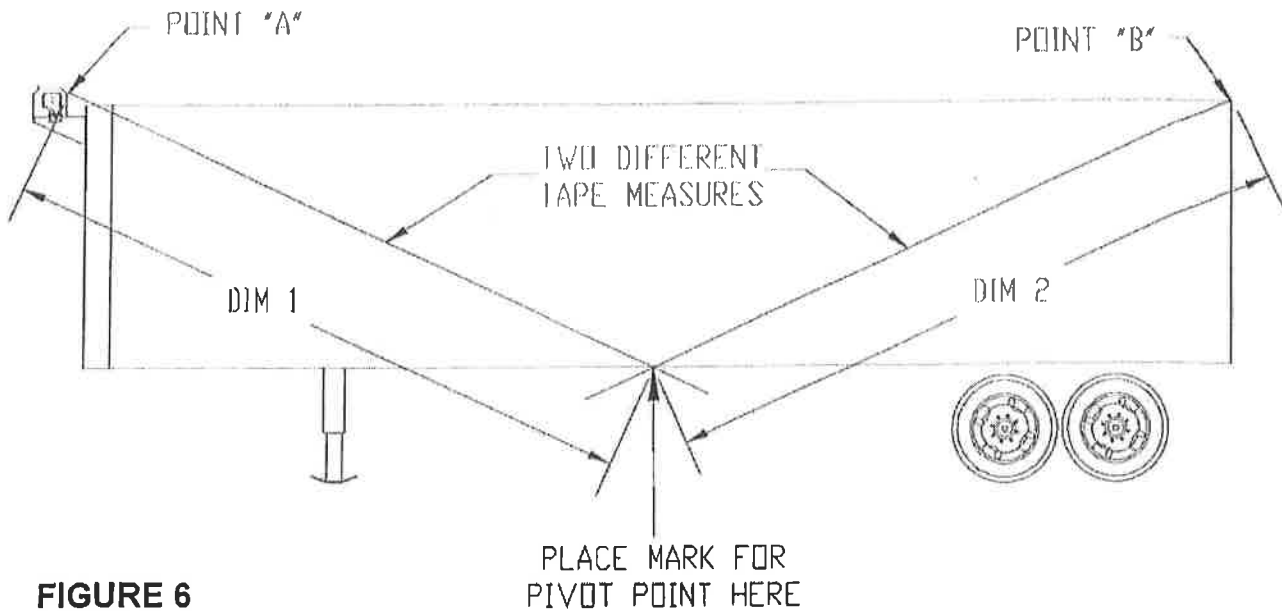


FIGURE 6

DIM 1: _____ = DIM 2: _____
(For proper coverage of trailer, DIM 1 should equal DIM 2)

- If you are welding the pivot mounts to the trailer skip this step. Use the pivot mount as a guide to mark your hole locations on the truck. Ensure the pivot mount is centered on the mark you just made and there is at least 1/2" (1.3 CM) between the underbody of the truck and the top of the spring. Drill a clearance hole for a 1/2" (Ø1.27 CM) bolt at the locations you just marked. Bolt the pivot mount to the truck using the supplied 1/2" - 13 x 2 1/2" (Ø1.27 CM x 6.35 CM) bolts, flat washers, and lock nuts.

- If you bolted the pivot mount in place skip this step. Ensure the pivot mount is centered on the mark you just made and there is at least 1/2" (1.3 CM) between the underbody of the truck and the top of the spring. Weld the pivot mount in place.

Long Arm



INSTALLING THE ARMS

NOTE: When cutting the extrusion, cut off the end of the extrusion that does not already have holes drilled in it.

• Take the dimension you wrote down on page 6 and subtract 12" (30.5cm) from this dimension. (DIM 1 from page 6) - 12" (30.5cm) = _____. Cut the arm extrusion to this length.

• Slide the arm extrusion over the shaft on the spring assembly. Align the holes in the arm with the holes in the spring shaft assembly. Attach shaft to arm using the supplied 5/16" - 18 x 2 1/2" (Ø.8cm x 6.35cm) (pan head bolts, and lock nuts

• Slide an upper bent tube into each end of the rear cross bar and into both arm extrusions. Adjust bent arms so that rear cross bar is centered between sides of trailer and parallel with rear of trailer. Rear cross bar should now be at point "B" as shown on Figure 6 on page 6.

• Drill two 3/8" (Ø1cm) holes completely through the extruded arms and upper bent tubes where they overlap (4 holes total 2 on each arm) (see Figure 7).

• Drill two 3/8" (Ø1cm) hole completely through the rear cross bar and upper bent tubes where they overlap (4 holes total 2 on each end of rear cross bar) (see Figure 7).

• Do not bolt together at this time. You will need to take apart rear cross bar to install tarp.

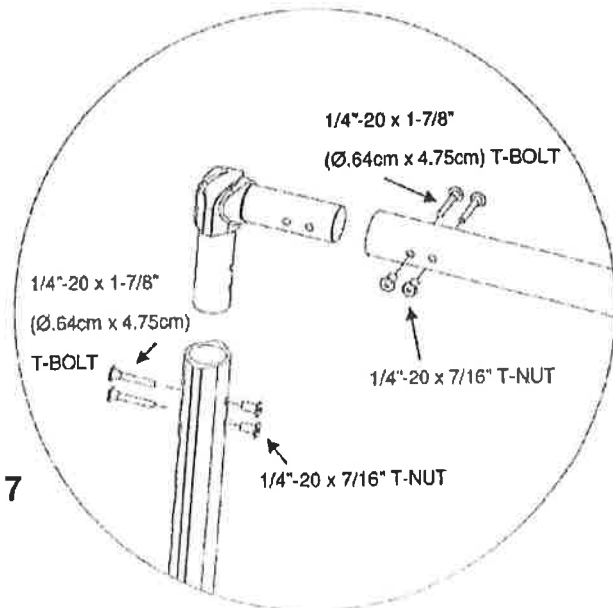
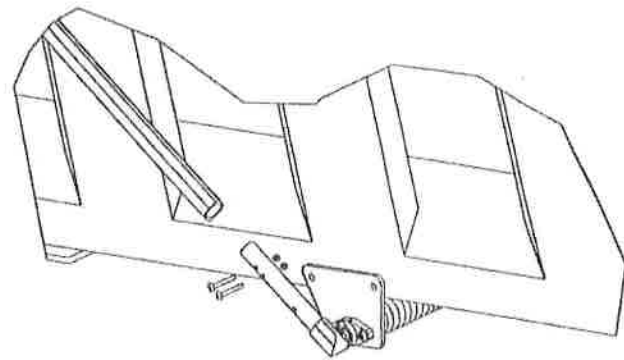


FIGURE 7

Long Arm



INSTALLING CONTACT PLATE ASSEMBLY

- Follow the instructions that come with the contact plate assembly to install your contact plate and properly hook up the electrical wires that will operate your tarping system.
Installing the electrical switch kit
- Follow the instructions that come with the electrical switch kit to install your switch and properly hook up the electrical wires that will operate your tarping system.
Installing the tarp
- Thread the tarp spline into the slot in the center of the aluminum roller bar (remove excess spline sticking out past ends of roller bar to prevent it from hindering the system's operation).
- Remove one upper bent tube from rear cross bar.
- Thread the tarp pocket (sewn into the tarp) onto the rear cross bar and reinstall upper bent tube.
- Center the tarp on both aluminum roller bar and rear cross bar.
- Attach upper bent tube to arm extrusion and rear cross bar using the supplied 1/4" - 20 x 7/16" T-nut and 1/4" - 20 x 1 7/8" T-bolt at the six holes you previously drilled.

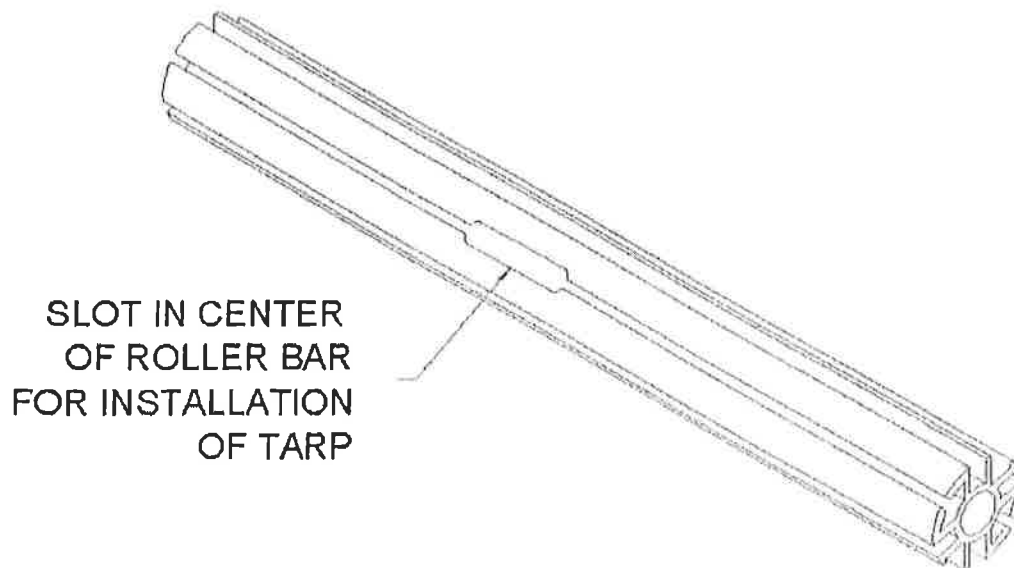


FIGURE 8

Long Arm



INSTALLING PIVOT ARM RESTS

- Unwind tarp so that the rear cross bar is resting on the back of the trailer.
- Position the pivot arm rest on the side of the trailer pushing up on the arm extrusion so they just lift the rear cross bar off the back of the trailer.
- Weld or bolt (bolts not supplied) the pivot arm rests to the side of the trailer.

CAUTION: When activating the control, make sure that all moving parts are in view of your sight, and no one is present on the side that is not in your direct view. Do not operate the system under overhead electric lines and when lightning strike danger is present.

WARNING AND OPERATIONAL LABEL LOCATIONS

- The warning and operational labels must be placed near the toggle switch location.

***Thank you
for your purchase!***



Visit our website for more information www.donovan-ent.com

3353 SE Gran Park Way ■ Stuart, FL ■ 800-327-8287 ■ 772-286-3350 ■ Fax 772-287-0431