

THIS KIT IS NOT FOR BEGINNERS! The skills required to use this kit, at a minimum, mean you are an established Intermediate Builder.

Your Scale Motorsport F1 2000 Photoetch Set comes with tons of details, more details than we have ever provided in previously released photoetch sets.

General Body Preperation:

If you plan on building the Wind Dimple Deflector and Fuel Access/Dry Brake details included with your Scale Motorsport F1 2000 Super Detail Kit, **make sure to read the General Body Preperation instructions before proceeding with any other work.**

Once you have accomplished the body prep work, you can pretty much cruise along with whatever details you want to do build next.

MAKE SURE TO READ the Body Preperation instructions before proceeding with any other work.

You may decide not to build in any of the details under General Body Preperation, but if you decide after painting the body that you would like to build in those details, it will be too late. **PLAN AHEAD!**

You will notice throughout the instructions a small illustration that looks like this:



This icon refers to research information in a magazine we recomend for building your F1 2000:

F1 Modeling Scale Auto Enthusiast Magazine Issue # 8

Titled: **Ferrari**
By: Sankaido Publishing Co. Ltd.
Available from: Hobby Link Japan,

www.HLJ.com

or
Rainbow Ten
www.wbs.ne.jp/bt/models/english/top.html

A second publication:

F1 Racing Magazine Issue February 2001
Titled: **Schuey on Schuey**

By: Haymarket Magazines Ltd.

Subscriptions:

Phone: 44-1795-414818

Fax: 44-1795-414555

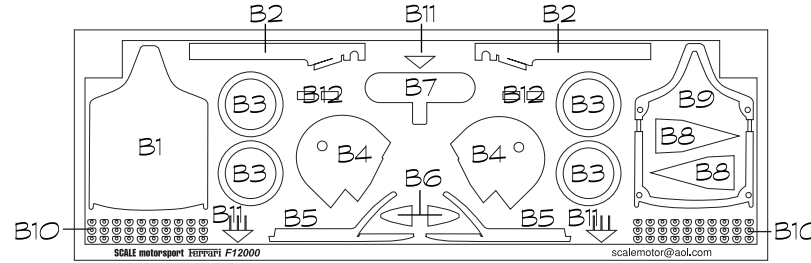
Email: haymarket@galleon.co.uk



Matthew Wells

Matthew Wells,
Scale Motorsport

4. Photoetch Details

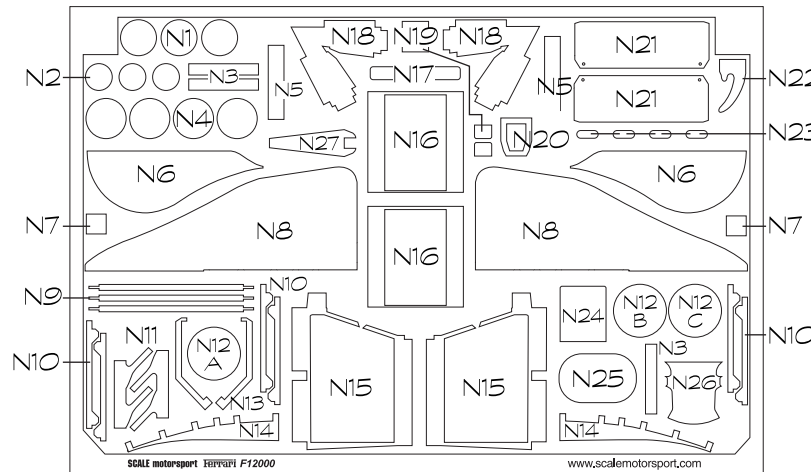


Photoetch Half Sheet

- B1 Front Bulkhead
- B2 Front Wing Deflectors
- B3 Brake Hub Details
- B4 Fuel Dry Break Bodywork
- B5 Font Wing Deflectors
- B6 Camera Details
- B7 Bodywork
- B8 Dry Break Bodywork
- B9 Nose Cone Mounting Bracket
- B10 Brake Hub Details
- B11 Bodywork
- B12 Noscone Mt. Bracket details

Tamiya Paint Color

- X-19 Smoke
- X-2 White
- X-24 Clear Yellow
- TS-49 Bright Red
- X-2 White
- X-1 Black
- TS-49 Bright Red
- TS-49 Bright Red
- X-19 Smoke
- X-24 Clear Yellow
- TS-49 Bright Red
- TS-13 Clear

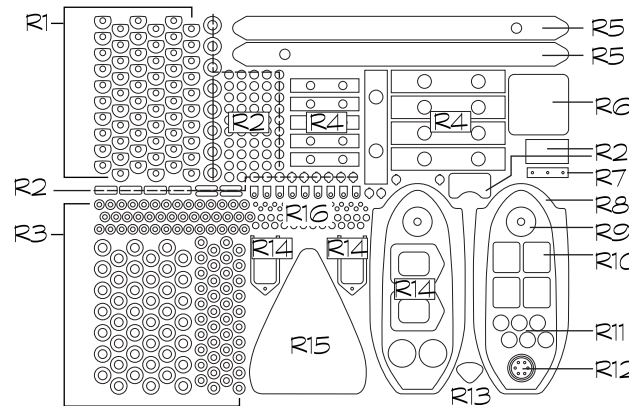


Photoetch Full Sheet

- N1/N2 Dry Brake Details
- N3 Hose Clamps
- N4 Brake Hub Details
- N5 Radiator Top
- N6 Bodywork
- N7 Camera Details
- N8 Barge Boards
- N9 Barge Board Mounts
- N10 Radiator Straps
- N11 Radiator Tops
- N12 Dry Brake Details
- N13 Barge Board Mounts
- N14 Barge Board Parts
- N15 Radiator Shroud
- N16 Radiator Shroud
- N17 Mirror Faces
- N18 Dry Break Bodywork
- N19 Front Wing Details
- N20 Front Bulkhead Detail
- N21 Air Box Skirts
- N22 Rear Jack Mount
- N23 Front Bulk Head Detail
- N24 Camera Detail
- N25 Bodywork
- N26 Steering Wheel Center
- N27 Antenna Base

Tamiya Paint Color

- TS-13 Clear
- TS-13 Clear
- X-24 Clear Yellow
- TS-13 Clear
- TS-49 Bright Red
- X-1 Black
- TS-49 Bright Red
- TS-49 Bright Red
- TS-13 Clear
- TS-13 Clear
- TS-13 Clear
- TS-49 Bright Red
- TS-49 Bright Red
- TS-13 Clear
- TS-13 Clear
- TS-13 Clear
- TS-49 Bright Red
- TS-49 Bright Red
- X-2 White
- XF-1 Flat Black
- TS-49 Bright Red
- X-1 Black
- XF-1 Flat Black
- X-1 Black
- TS-49 Bright Red
- 1224 Composite Fiber Decal
- TS-49 Bright Red



Rubber Backed Photoetch Sheet

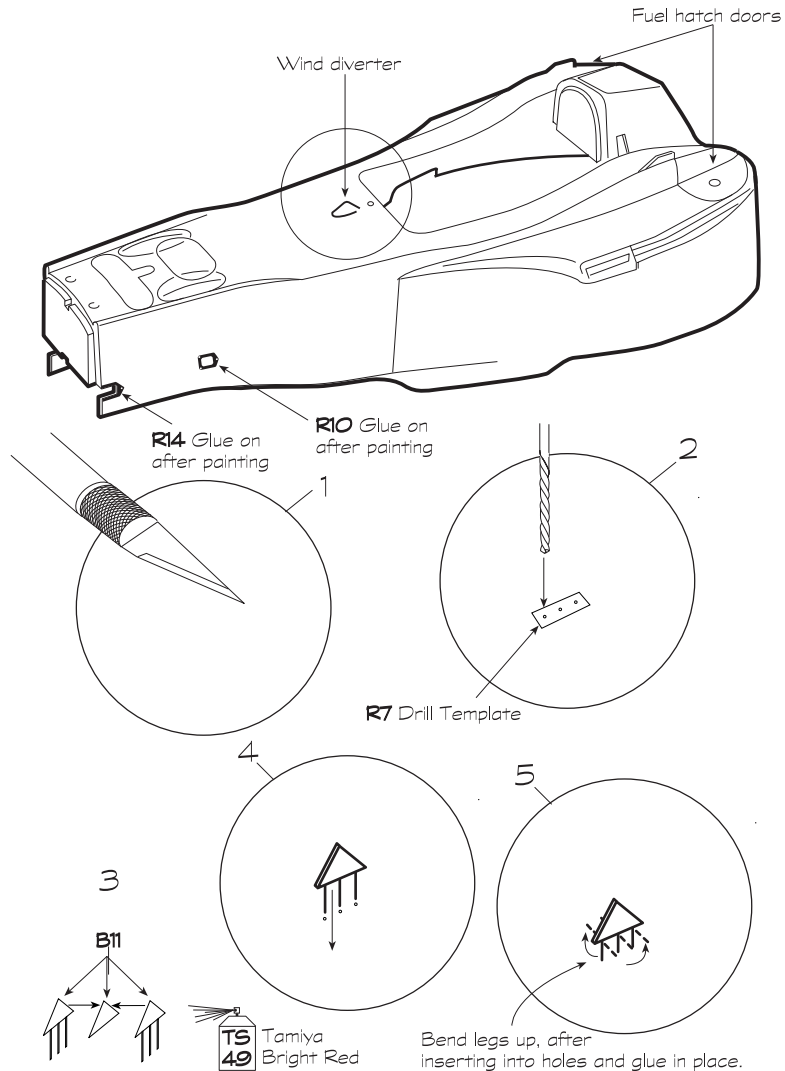
- R1 Hub Details
- R2 Steering Wheel Details
- R3 Body Fasteners (3 sizes, more than you'll ever need)
- R4 Hose Clamps (2 sizes)
- R5 Engine Badges
- R6 Tail Light
- R7 Drill Temp for Triangular Bodywork
- R8 Exhaust Shields
- R9 Exhaust Lambda Sensors
- R10 Front Wing Adjuster
- R11 Rear Wing Fastener (Lower Cross Member)
- R12 Front Bulk Head Detail
- R13 Front Bulk Head Detail
- R14 Front Suspension Mounts
- R15 Air Box Induction Louvres
- R16 Air box details

- X-24 Clear Yellow
- X-27 Clear Red & X19 Smoke
- TS-49 Bright Red
- TS-13 Clear
- X-19 Smoke (Buff off Ferrari Name)
- X-27 Clear Red
- No color
- X-19 Smoke
- TS-13 Clear
- XF-1 Flat Black (Buff off letters)
- XF-1 Flat Black
- TS-13 Clear
- X-24 Clear Yellow
- TS-13 Clear
- XF-1 Flat Black
- X-1 Black

General Body Preparation

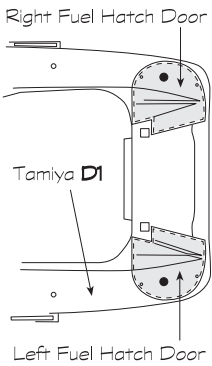
Everytime we buffed out our paint job, the wind deflector dimple always exposed the undercoat. **B11** is the replacement part, make sure to paint and buff it out prior to step 5 below. Before painting Tamiya part D1

1. Trim wind deflector dimple off and sand smooth D1.
2. Using template R7, drill three holes as illustrated
3. Assemble **B11** photoetch parts and paint the sameway you paint Tamiya D1
4. Insert into the previously drilled holes, bend and glue as per step 4 & 5
5. Follow "Fuel Access Doors" next for further body preparation work.

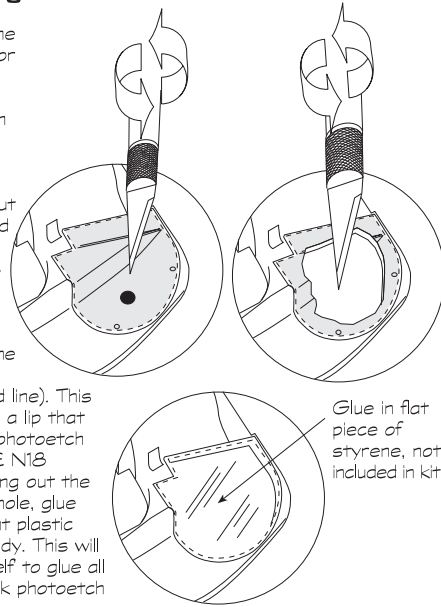


Fuel Hatch Access Doors

50 F1 Modeling Magazine



Carve out the fuel hatch door by trimming away plastic starting from the existing hole. Keep carving from the center out to the dotted line which corresponds to the inside mold mark. **DO NOT** carve past the inside mold mark (dotted line). This helps create a lip that will support photoetch pieces, B4 & N18. After trimming out the fuel access hole, glue a piece of flat plastic inside the body. This will create a 'shelf' to glue all the dry break photoetch parts below.



N12A Use if building a model car that's racing on the track. **DO NOT** use N12A & N12C together!

50 F1 Modeling Magazine

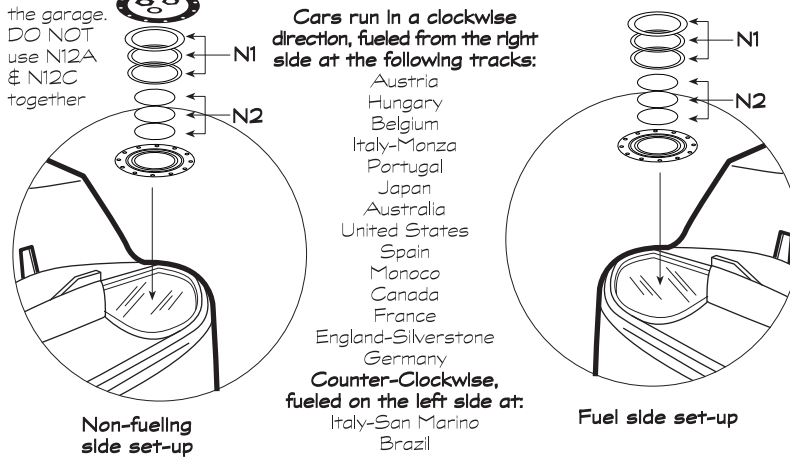
N12C Use if building a model car that's in the garage. **DO NOT** use N12A & N12C together

Cars run in a clockwise direction, fueled from the right side at the following tracks:

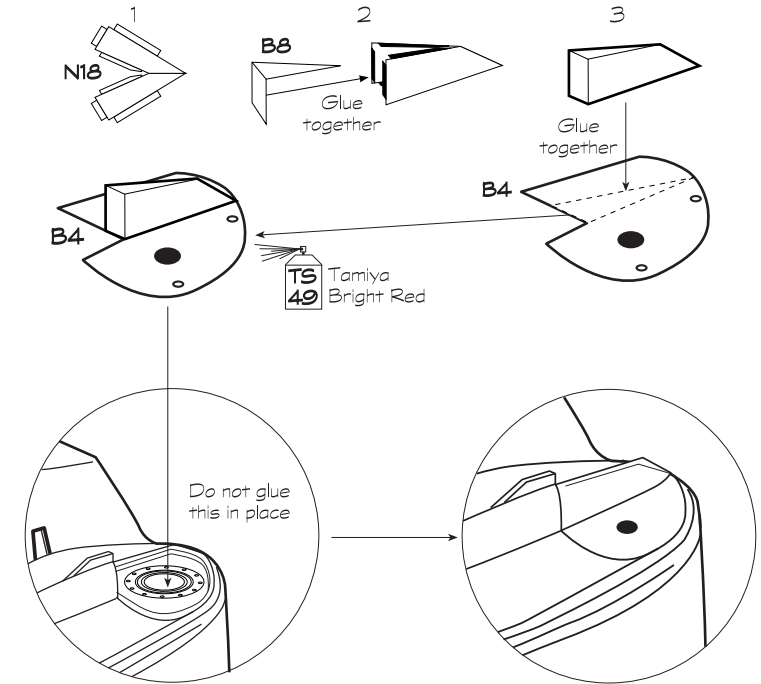
- Austria
- Hungary
- Belgium
- Italy-Monza
- Portugal
- Japan
- Australia
- United States
- Spain
- Monoco
- Canada
- France
- England-Silverstone
- Germany

Counter-Clockwise, fueled on the left side at:

- Italy-San Marino
- Brazil

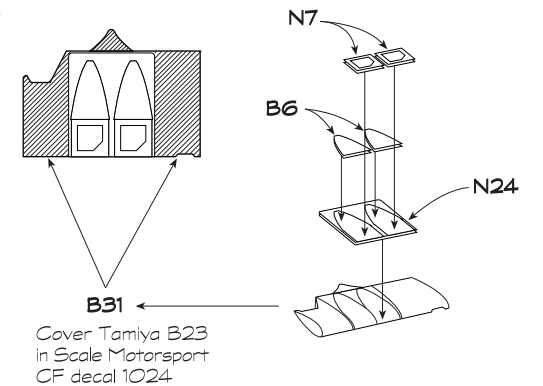


50 F1 Modeling Magazine



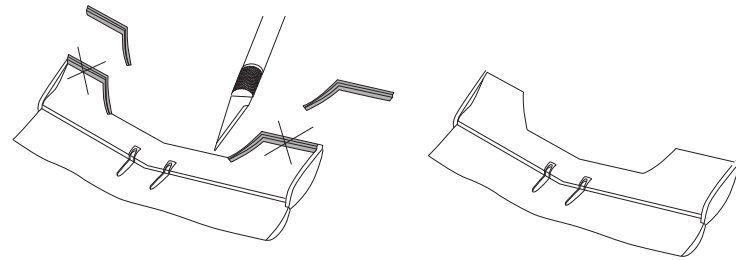
Camera Assembly

35 F1 Modeling Magazine



Front Wing Wickerbill

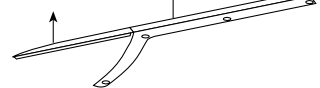
40 F1 Modelling Magazine



B5

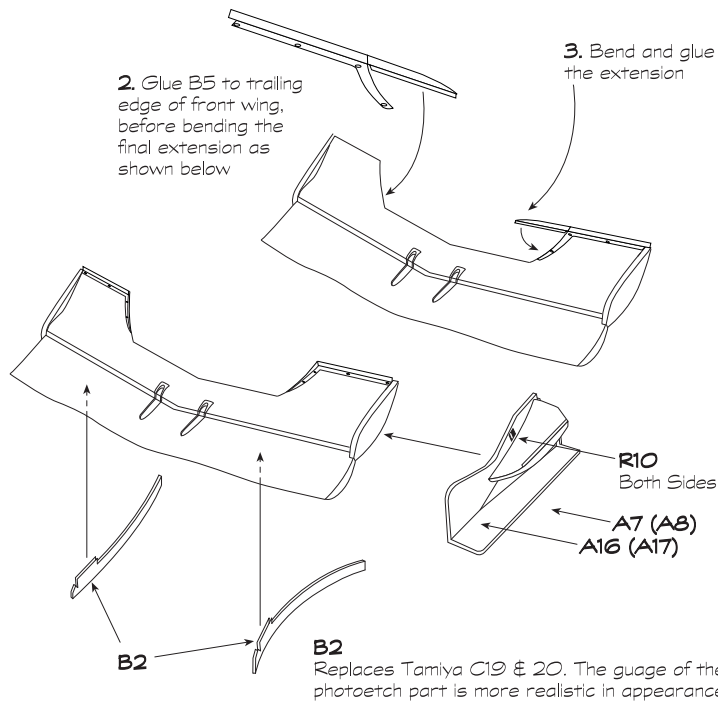
X 2
Tamiya White

1. Bend back edge up 90°



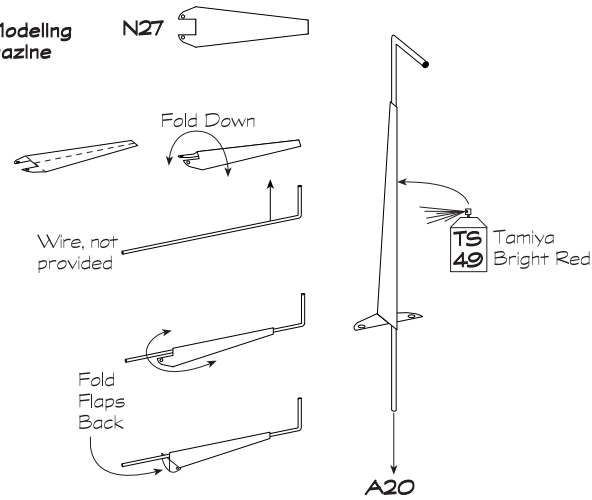
2. Glue B5 to trailing edge of front wing, before bending the final extension as shown below

3. Bend and glue the extension



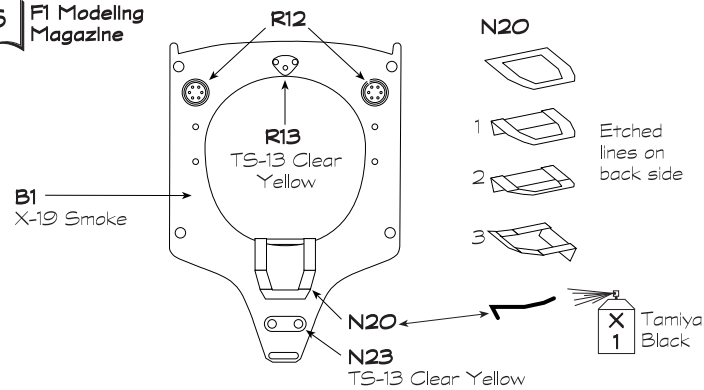
Front Antenna

50 F1 Modelling Magazine

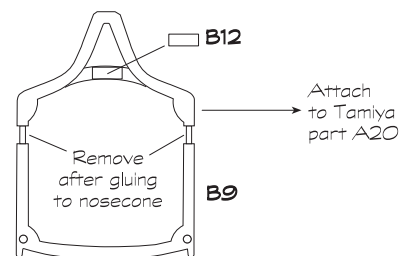


Monocoque Bulkhead

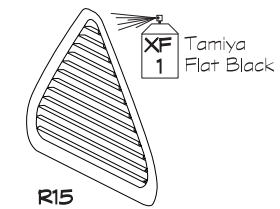
36 F1 Modelling Magazine



Nose Cone Frame



Induction Grill



R15

Important:

Make sure to glue R15 into induction scoop before bending louvres.

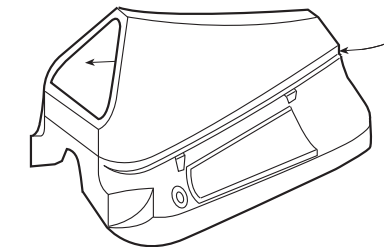
Note: Remove from rubber backing by cutting part out and placing in a laquer bath.

Do not try to peel from backing before the laquer bath, you will damage the part.

Use this method of removal for parts R4, R5, R6 & R8

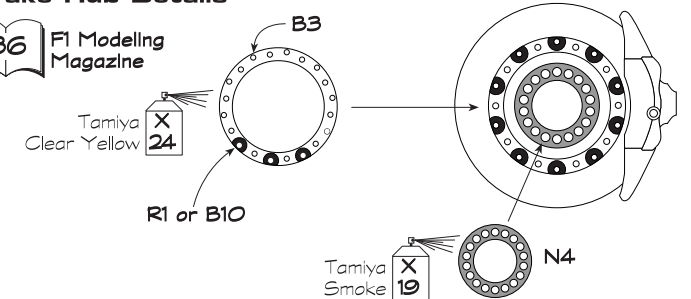
R15

Bend each louvre in, by rotating 90° after gluing grill in position. Mount grill from the inside.



Brake Hub Details

36 F1 Modelling Magazine



Radiator Grill Assembly

39 F1 Modelling Magazine

