

# Fabric *Library*

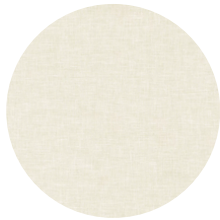
*Like they  
use to  
make them*



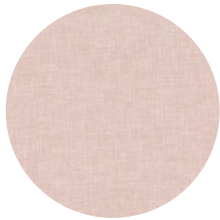
# Fabrics

(PRICE RANGE \$ - \$\$)

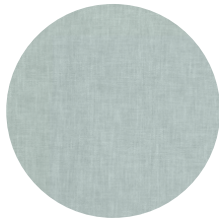
## LINEN LOOK



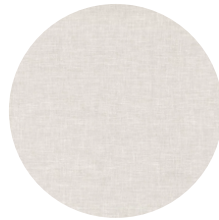
ivory



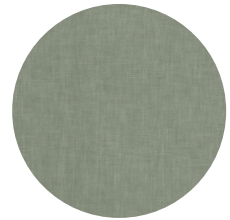
dusk



opal



oyster



eucalyptus

## BOUCLE



ivory



nougat



dusty rose



forest



mustard

## VELVET



spruce



eggshell



blossom



dijon



navy

## FAUX LEATHER



tan



fawn



sand

# Fabrics

(PRICE RANGE \$\$ - \$\$\$\$)

## PURE LINEN



ivory



linen



eucalyptus



blush



midnight

## DESIGNER



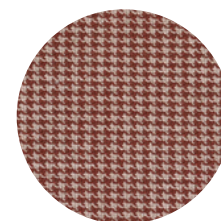
acca 0331



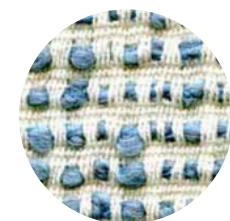
chunky



bonsai

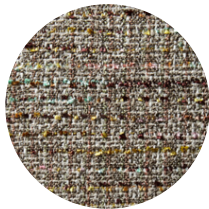


clifford



mammoth

## DESIGNER (POA)



salone



graffito



bemuse

## KIDS (POA)



oynx



hydrangea

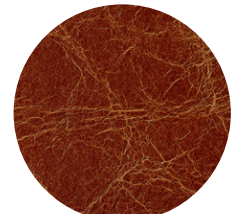


butter

## AGED ANILINE LEATHER



sesame



oak



## Timber Veneer



smoked oak



walnut



spotted gum



blackbutt



tasmanian oak



american oak

## Customer Supplied Fabric

Specify your own fabric with price on application. Just some of our suppliers are listed below.





*"I'll only ever use you now. By far the best quality beds I've seen in years"*

LEAH WILLIAMS DESIGNS

## Contact Us

[www.createestate.com.au](http://www.createestate.com.au)

E: [hello@createestate.com.au](mailto:hello@createestate.com.au)

P: 07 5438 8670

Factory: 4/34 Premier Circuit

Warana QLD 4575



SUNSHINE COAST. AUS.

# CREATE ESTATE