

The **Speed2Treat™ Home Healing Kit** is a simple care plan to manage and monitor acute head, neck and jaw trauma over a 4-week period.

The **Speed2Treat™ Home Healing Kit** includes multiple components that your patient can use at home with ease. It includes a **4-Week Care Plan** constructed for you to schedule telehealth progress monitoring.

It is a good idea to have **Kits** on hand at your office for emergency calls. We can also drop-ship to your patient's house.

The **Complete Speed2Treat™ Home Healing Kit** specifies short-term use of:

- **QuickSplint®**, a temporary and easy to use overnight oral appliance
- **Hot/Cold Therapy Packs** with a custom neoprene wrap
- **Online Resources** and **Guidebook** for patient self-care instructions
- **Opera VR Home Therapy** for calming and pain relieving experience
- **gentle jaw®** passive jaw device

Pain and/or dysfunction is characterized by sudden onset of acute symptoms of acute jaw, face, ear, neck and/or head pain (some or all may occur):

- Localized pain
- Inflammation and tenderness of joints
- Tenderness of muscles and ligaments
- Dysfunction (difficulty chewing, opening or closing mouth, turning head)
- Tension headache



The **4-Week Care Plan** is appropriate for head, neck and jaw trauma such as acute jaw joint and muscle sprain/ strain (JAMSS) headaches and neck strain caused by:

- Clenching and overuse of jaw muscles
- Hyperextension of the TMJ and muscles of mastication
- Prolonged stretching of muscles/ligaments (intubation, other)
- Flare-ups of existing TMJ conditions
- Direct trauma to the head, neck or jaw such as whiplash, sports-related concussion, or blow to the jaw.

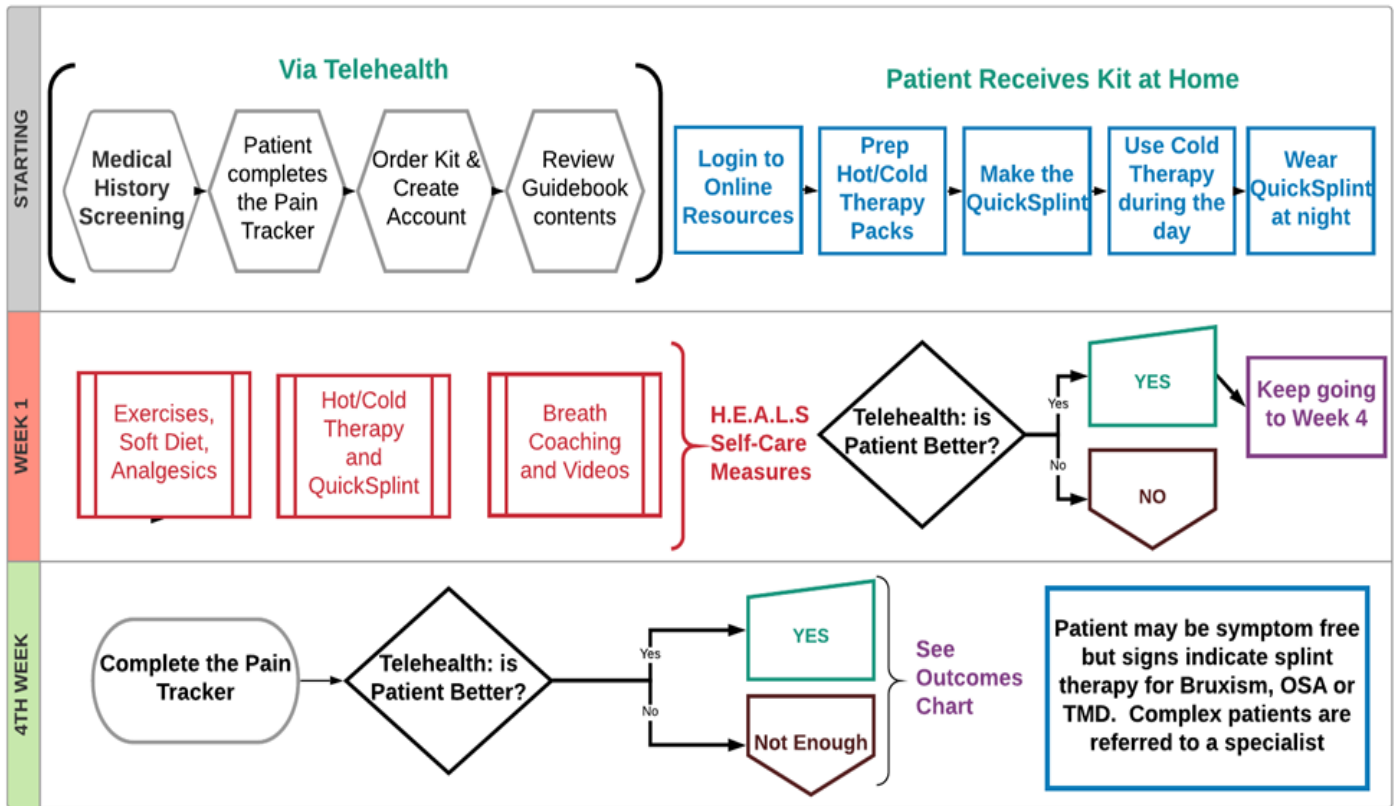
Designed by orofacial pain experts with specialized training in head, neck and jaw pain conditions, the **Speed2Treat Home Healing Kit** provides conservative, evidence-based treatment, self-care measures and patient education for frontline dental, medical and physical medicine providers to help your patient recover.



3 Ways To Use The Speed2Treat™ 4-Week Care Plan

1. Have Speed2Treat Home Healing Kits at your office for immediate delivery
2. We can drop-ship to your patient (order online or use our Drop Ship Order Form)
3. Patients can purchase at Speed2Treat.com, and schedule follow-up appointments with your office or via telehealth.

SPEED2TREAT 4-WEEK CARE PLAN



Contact care@speed2treat.com for additional resources

- A. Drop Ship Order Form with Special Pricing for Clinicians (\$100 for Complete, \$60 for Basic)
- B. Speed2Treat™ Billing, Consents and Documentation for Telehealth (Medical or Dental)
- C. Speed2Treat™ Medical History Form (patient can type, save and email to you)
- D. Speed2Treat™ Jaw Pain Questionnaire
- E. FaceMyPain.com Referral for Complex Orofacial Pain Patients
- F. Email announcement to your patients: telehealth and Speed2Treat Home Healing Kit

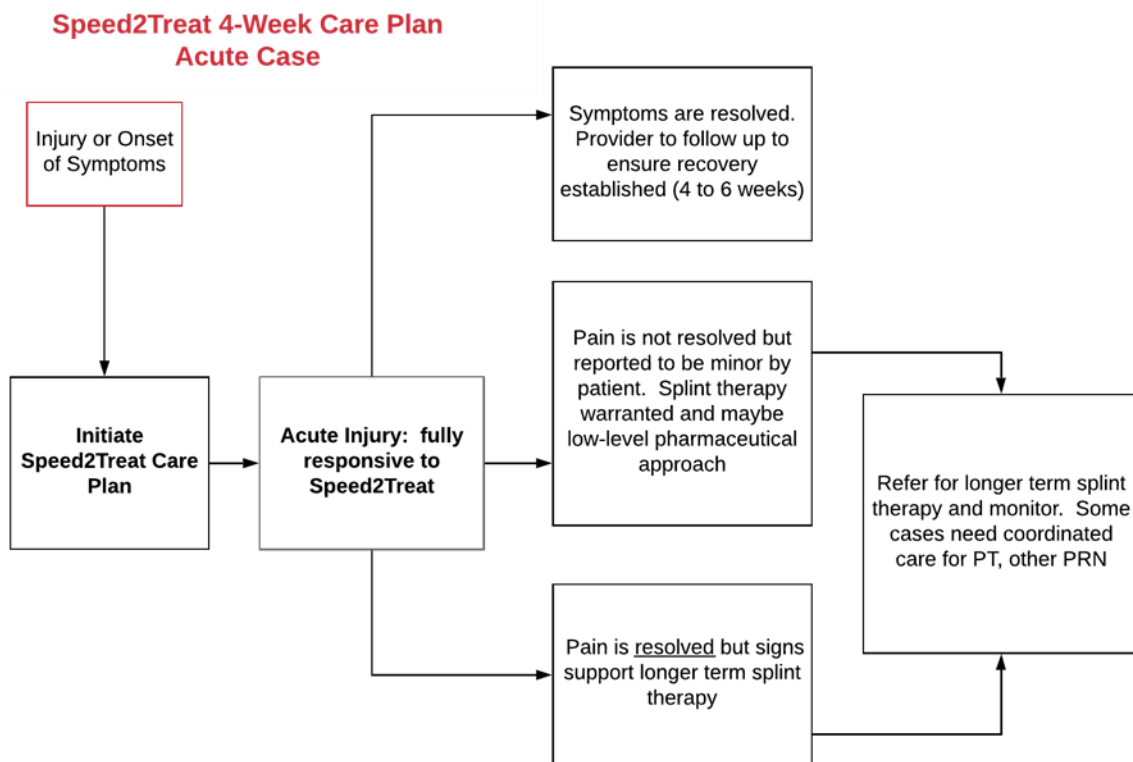
VIDEOS

Overview for your practice (pre-COVID) <https://vimeo.com/401702784>

Setting up your Speed2Treat Home Healing Kit: video for patients
<https://vimeo.com/401053187>

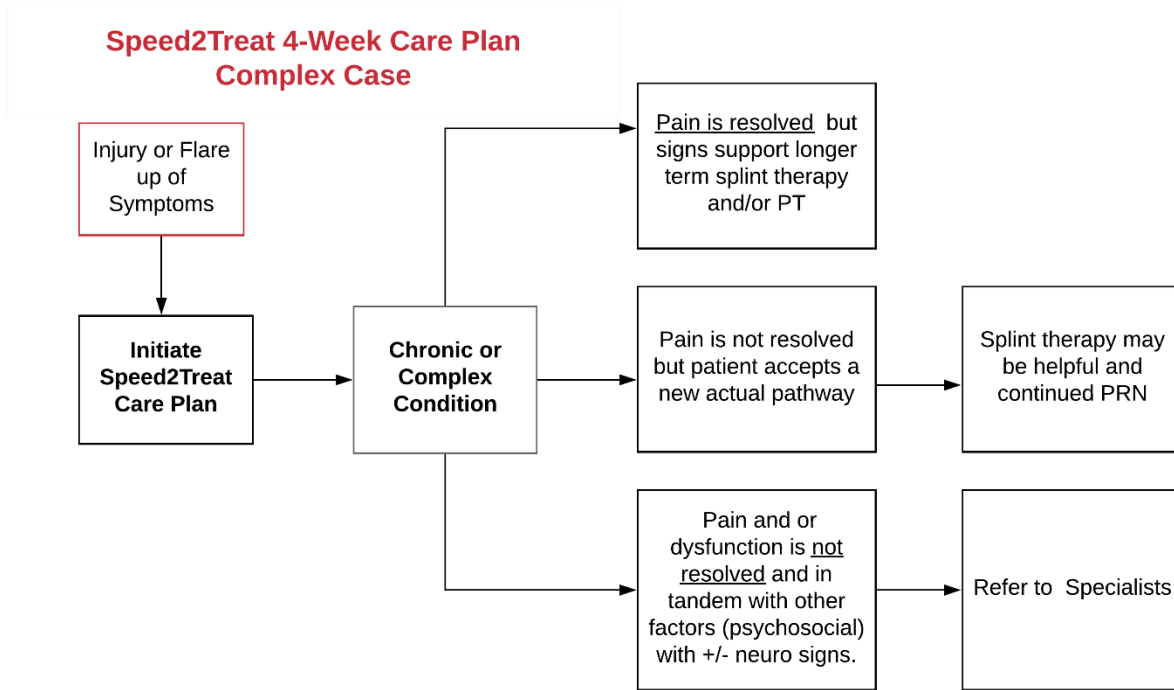
Let's get started: Dr. James Friction introduces the objectives of the 4-Week Care Plan
<https://vimeo.com/386627233>

OUTCOMES



Clinical experience shows that 70% or more of patients with acute head, neck and/or jaw pain (without significant prior history) who enter a Speed2Treat model will improve within four weeks to normal function. The **Speed2Treat™ Home Healing Kit** will also benefit more complex patients that may have flare-ups of an existing condition. Patient-reported results and your evaluation will help determine whether additional care is merited.

Studies have shown that up to 80% of the population that grind their teeth are not aware of their condition. Wearing the **QuickSplint®** temporary oral appliance for 4 weeks may demonstrate to your patients that they do brux as grind marks may be evident on the surface of the **QuickSplint®**. Trial splint therapy will help you and your patient determine if full-arch splint therapy is appropriate for bruxism, TMJ disorders, or sleep disordered breathing.



FaceMyPain.com



In partnership with Talentship LLC, we created www.FaceMyPain.com, which is a referral network for clinicians to coordinate care with other providers specializing in assessment, prevention and treatment for common yet challenging conditions including facial pain, headache, jaw pain and sleep disorders.

Regardless of your level of training, you can help your patient by initiating conservative, cost effective treatment with Speed2Treat and if necessary, refer to a specialist.

**Order the [Speed2Treat Home Healing Kit](#)
at Speed2Treat.com or QuickSplint.com**

**Contact care@speed2treat.com
for special pricing for clinicians!**