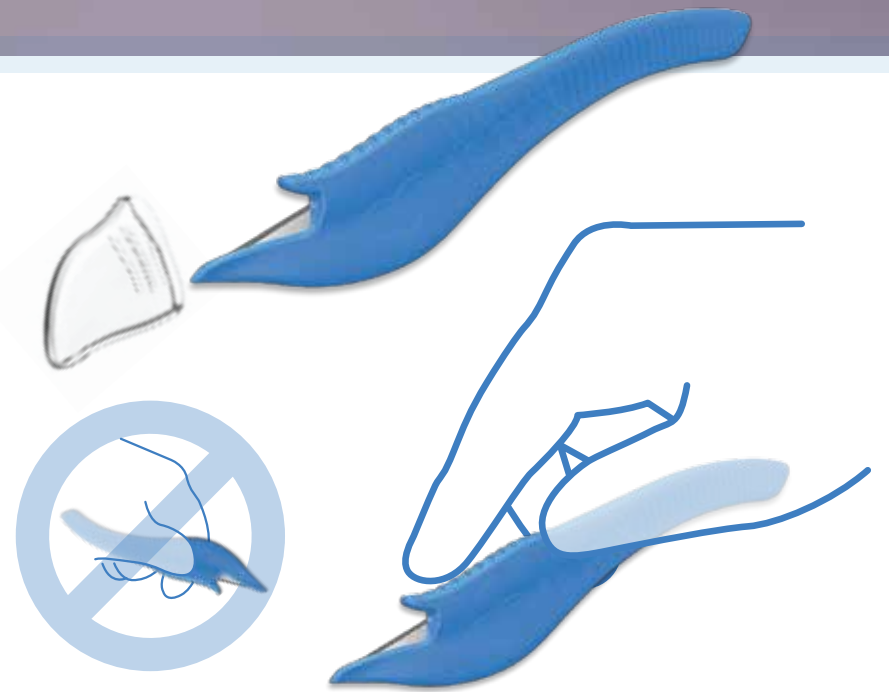


Sureglide™

CESAREAN DELIVERY SAFETY SCALPEL

1. Prepare patient and expose uterine wall using standard surgical techniques.
2. Remove cap from Sureglide.
3. Position the blade facing **UP**.



4. Determine if the uterine wall is **THICK** or **THIN**. If thick, use multiple pass technique.

For a THIN uterine wall

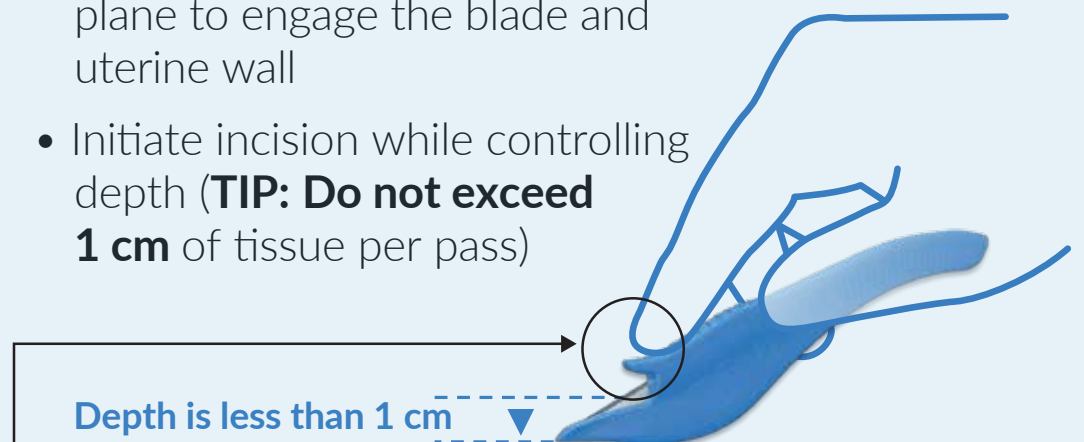
- Using the plastic tip of the Sureglide, apply slight downward pressure to enter the uterus
- Slightly rock the device handle parallel to the uterine plane to engage the blade and extend the hysterotomy



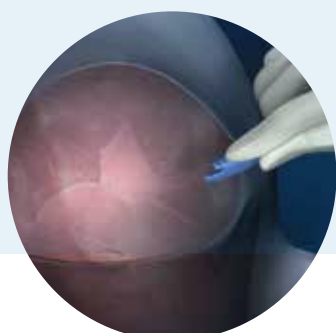
- Extend hysterotomy by cutting **UP and AWAY** from the fetus (**TIP: Keep north tip of finger guard visible** to prevent going too deep)

For a THICK uterine wall (multiple pass technique):

- Using the plastic tip of the Sureglide, apply slight downward pressure against uterine wall to initiate incision.
- Slightly rock the device handle parallel to the uterine plane to engage the blade and uterine wall
- Initiate incision while controlling depth (**TIP: Do not exceed 1 cm** of tissue per pass)



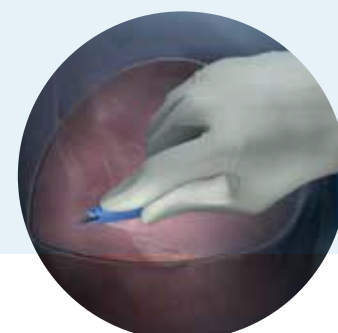
- Multiple passes required until puncture of uterine wall is achieved
- Extend hysterotomy by cutting **UP and AWAY** from the fetus (**TIP: Keep north tip of finger guard visible** to prevent going too deep)



Assess Uterine Thickness



Initiate incision



Extend UP and AWAY