



Safer for baby, peace of mind for you



Introducing
the **Sureglide™**
a safety scalpel for
cesarean delivery

The Sureglide safety scalpel captures the feel and elegant design demanded by surgeons and safety features to reduce the risk of fetal lacerations and sharps injury to surgical staff during cesarean delivery.

SAFE

Safety scalpel developed to help reduce the risk of fetal injury from nicks, cuts or lacerations during cesarean deliveries and to help protect surgical teams from sharps injury.

ELEGANT

Sureglide's ergonomically designed handle and protected blade have been optimized to provide superior line of sight, comfort and control for physicians as well as protection for mothers and newborns.

EFFECTIVE

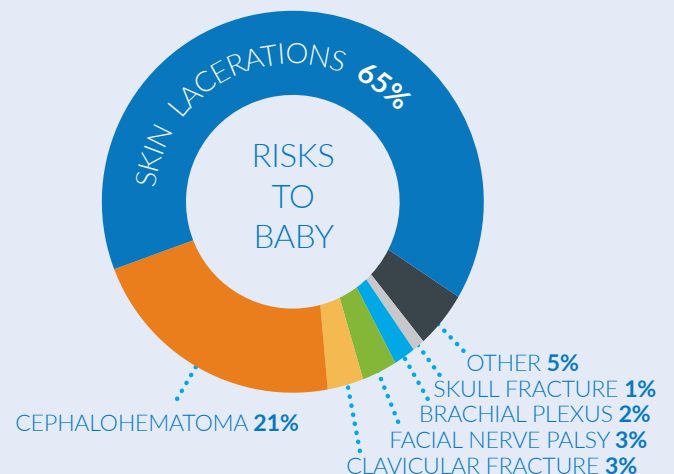
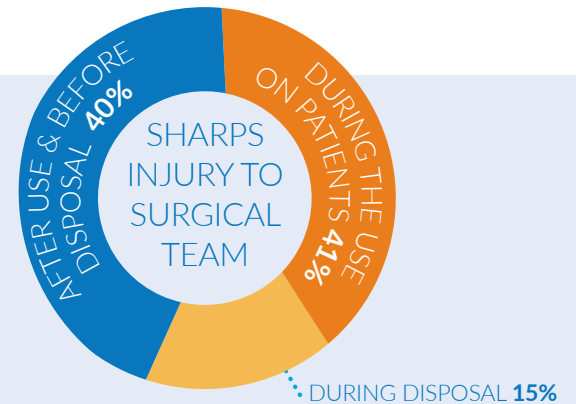
Safety engineered device for blunt entry to reduce the risk of fetal lacerations during cesarean deliveries and to protect surgical teams from sharps injury.

Sureglide offers enhanced safety

Superior protection against sharps injury vs. on-market scalpels

DOES YOUR SCALPEL PROTECT YOUR TEAM AND PATIENT?	CONVENTIONAL SCALPEL	SAFETY SCALPEL	Sureglide
BEFORE USE	NO	NO	YES
DURING PROCEDURE	NO	NO	YES
AFTER PROCEDURE	NO	YES*	YES
SAFETY MECHANISM	NONE	REQUIRES ACTIVATION	PASSIVE

*Safety feature must be activated by clinician

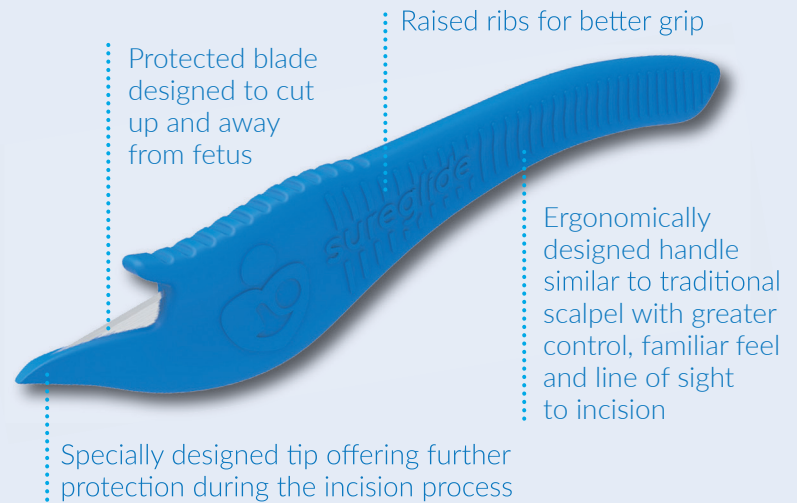


Sureglide™ Safety Scalpel for Cesarean Delivery

Protect yourself.
Protect your staff.
Protect your patient.

Protection without compromise

- Atraumatic fascial entry
- Blunt entry into the uterus; can use a single pass or multiple passes for a wide range of tissue thickness
- Extended hysterotomy incision
- Sureglide is one option for preventing fetal laceration at hysterotomy



Surgery requires precision, Mothers want safety

- Innovative tip protects baby when entering the uterus
- Sureglide cuts up and away from baby
- Designed to produce cleaner cuts, promoting better healing
- Protects surgical team from accidental sharps injury
- Single use, latex free
- #11 Stainless Steel Blade
- Sterile, ready-to-use
- Passive safety device based on OSHA standards (no activation required)
- Ergonomic handle for comfort and control
- Similar weight and length of conventional scalpels
- Full visibility to blade
- For use by left and right handed surgeons

PROD #
ECO158005

BLADE SIZE
#11

PACKAGING
10/box; 10boxes/case

Ecomed Solutions
214 Terrace Drive
Mundelein, IL 60060

For more information:
onestop@ecomedsolutions.com
Toll Free: 866-817-7114

www.ecomed-solutions.com

Your contact details here: