

A man and a woman are relaxing in a Wave hot tub outdoors. The hot tub is a light-colored, rectangular unit with a dark top. The woman is holding a smartphone and showing it to the man. They are both smiling. The hot tub is situated on a paved patio area. In the background, there is a lush green lawn, a wooden fence, and a large bush with red flowers. The overall scene is bright and sunny, suggesting a pleasant outdoor environment.

**wave**<sup>TM</sup>

**Revolutionize Your Relaxation:**  
**Wave's 2024 Spa Range**



# We are wave™

We were born and bred in the North East of England and this inspires our sense of fun and adventure. Life is too short not to enjoy it. This is at the heart of the products that we create – we like to get the most out of our weekends and holidays and we want the same for you. You can rely on our products because they were tested right here in the North East – an area known for a spirit of fun but not for its great weather.

Wave is a fast growing and award-winning spa retailer that first launched in 2018 and have sold over 100,000 Spas all over the UK & USA. As a dynamic and innovative company delivering exceptional award-winning products to our global customer base, we pride ourselves on our commitment to excellence, creativity, and continuous improvement.





# New Rigid Eco Foam Spas made with Wave Heat Integrated Technology (HIT)



We are excited to show you our latest spa innovation - the revolutionary new Wave Rigid Eco Foam Spa Collection is brand new for 2023/24 and ready to be shipped to you. The collection is built around our Wave Eco Foam Core which allows us to build the perfect spa for your customers' outdoor spaces.



## Integrated heater

Runs 15% more quietly and still heats to 40°C.



## Easy tool free set up

Can be assembled quickly at the customer's home.



## Accessorise

A range of accessories are available for your customers to optimise their spa experience.



## Energy efficient

Using Wave Eco Technology, our new spas are 50% more thermally efficient than inflatable spas and can cost as little as 42p per day to run. They also come with an energy-saving cover.



## Innovative new shapes

Comes in square, round and octagonal models.



## WiFi controlled

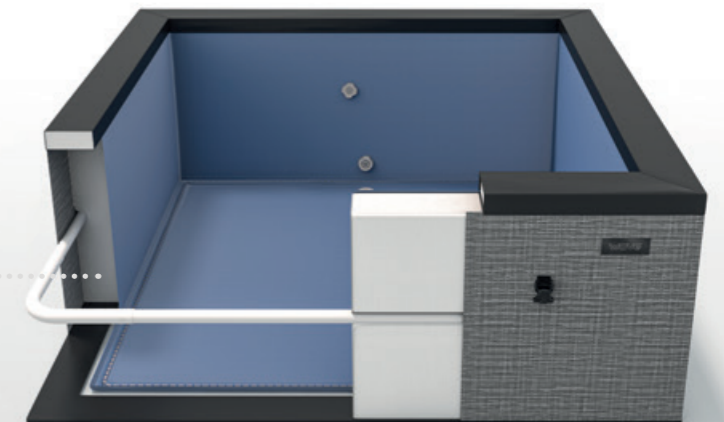
Your customers can take full control of their spa even when they're not at home with our new WiFi controls.



## A spa to suit any space and any taste

With three models, multiple size options and five interchangeable outer skin colours, your customer can fully personalise their spa.

**waveco**  
Foam Core





# Why Wave Rigid Eco Foam Spas?



## Wave's Rigid Eco Foam Spas

- 👍 15% quieter running than inflatable spas
- 👍 50% more energy efficient than inflatable spas
- 👍 Tool free set up in 20 mins unlike resin hot tubs
- 👍 Fully portable so can be delivered next day, carried through the house, moved around and stored away
- 👍 Smooth lines for a premium finish
- 👍 42p per day vs up to £5 per day running cost
- 👍 Able to replace parts if any issues unlike inflatables
- 👍 New skins available to refresh the look of your spa



## Inflatable Hot Tubs

- 👎 Less insulation means high running costs
- 👎 Low quality
- 👎 Unattractive appearance
- 👎 Short lifespan
- 👎 External heater is noisy and bulky
- 👎 Difficult to troubleshoot



## Resin Hot Tubs

- 👎 Expensive
- 👎 Difficult to install
- 👎 Not portable
- 👎 Complicated
- 👎 Not family friendly
- 👎 Ongoing maintenance costs

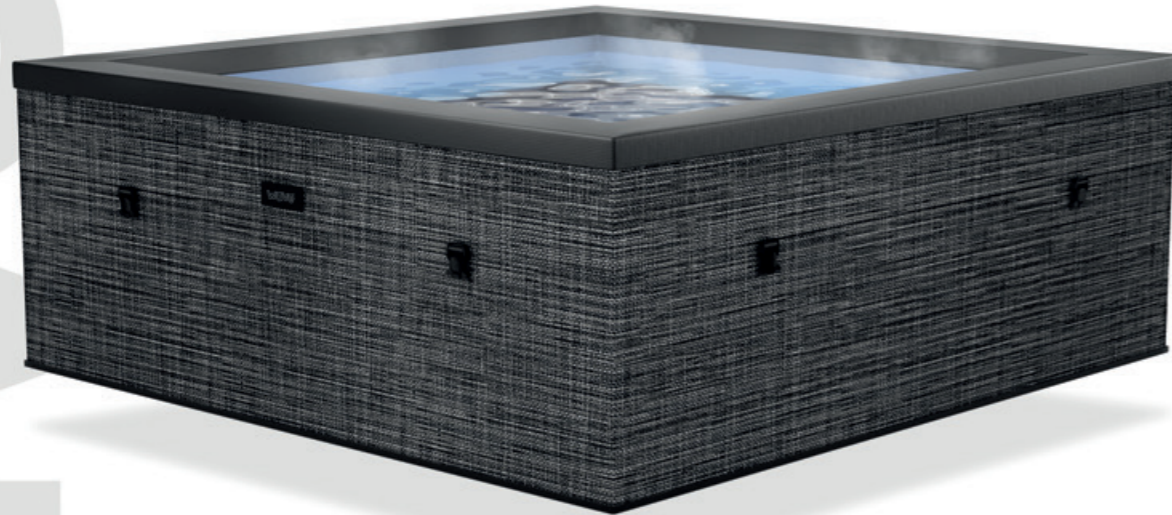


## Accessories 👍

At Wave, we understand that a perfect spa experience goes beyond the tub itself. That's why we offer a carefully curated selection of accessories designed to enhance accessibility, maintain cleanliness and improve energy efficiency, ensuring your customers enjoy the ultimate relaxation.



Available in 2 sizes

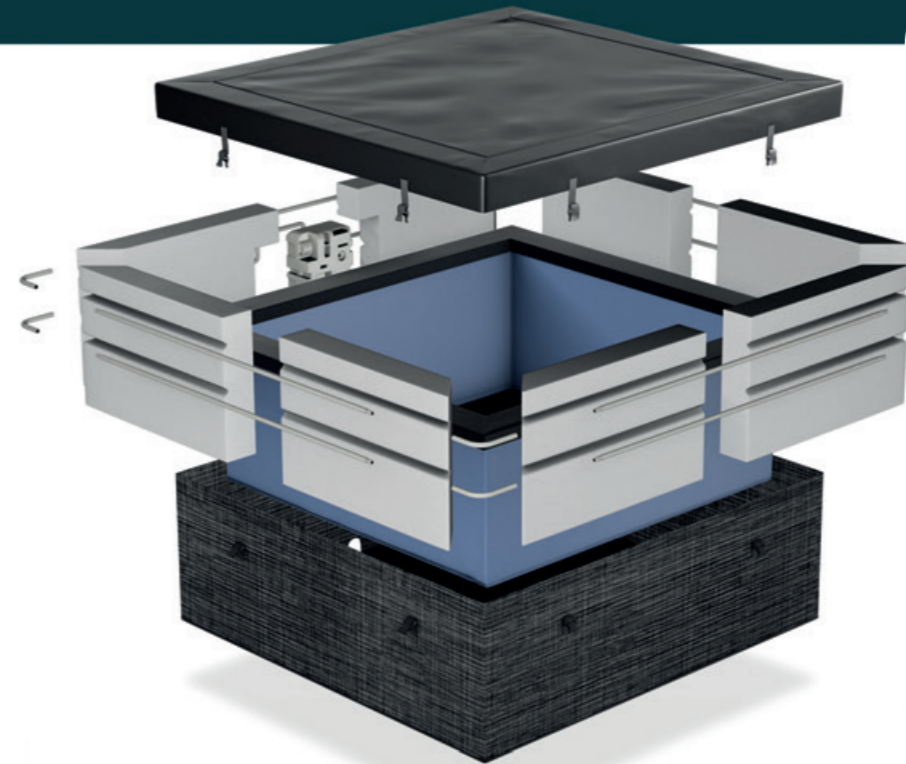


Charcoal Flint Pebble Umber Graphite

(5 x interchangeable skins)

### Unwind with a blissful spa experience

The Garda is part of Wave's brand-new range of foam spas. Wave's revolutionary new foam construction means that it is up to 50% more thermally efficient than other portable spas. Showcasing a sleek square design, our Garda hot tub includes an integrated heating system which allows for a compact and seamless finish, whilst also reducing noise levels, allowing for a more tranquil spa experience. Available in a range of five interchangeable outer skins and two sizes; 2-4 person and 4-6 person, the Garda is the ultimate home spa.



up to 4

up to 6

External Dimensions	160cm x 160cm	180cm x 180cm
Internal Dimensions	130cm x 130cm	150cm x 150cm
Height	70cm	70cm
Wall Thickness	15cm	15cm
Capacity	825L	1100L
Filter/Heater	1800W eco heater with a max controllable temperature of 40°C	
Power Cable	7m cable	
Certification	UKCA, CE approved	
Warranty	2 years for the heater, 1 year for the liner warranty	

- Personalised**  
Changeable outer cover, select from a range of styles and colours.
- Efficient**  
Wave Eco Foam Core construction which is 50% more energy efficient than inflatable spas.
- Energy-saving cover**  
Inflatable weather-resistant cover retains heat. Includes childproof safety clips.
- Safe**  
7m waterproof power cable including RCD plug.
- WiFi controlled**  
Your customers can take full control of their spa even when they're not at home with our new WiFi controls.
- LED lights**  
Set the ambiance according to your mood with colour-changing LED lights.
- Anti-freeze system**  
Keep your spa safe over winter.
- Comfort**  
Built-in foam seats for extra relaxation.

GARDA

Available in 2 sizes

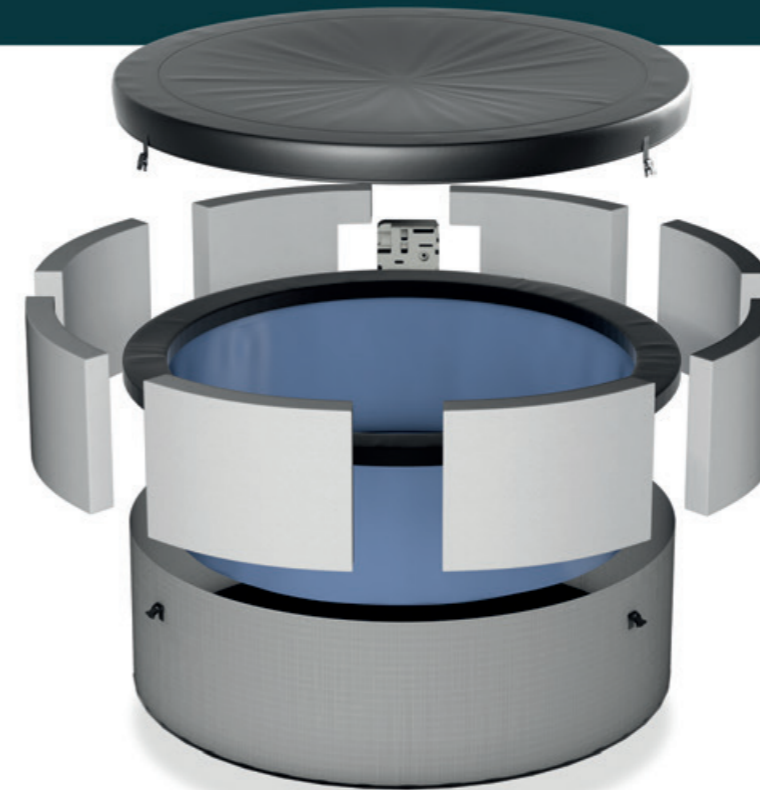


Charcoal Flint Pebble Umber Graphite

(5 x interchangeable skins)

### Rejuvenate your mind and body

The Tahoe is a part of Wave's new range of foam spas, featuring our revolutionary Rigid Eco Foam construction that makes it up to 50% more thermally efficient than other portable spas. Its circular design is unique and it comes equipped with an integrated heating system that makes for a compact and seamless finish while reducing noise levels by 15%. This innovative feature allows for a more tranquil spa experience. The Tahoe hot tub is available in two sizes, 2-4 person and 4-6 person. It is the ultimate home spa that combines energy efficiency, comfort, and style.



up to 4

up to 6

External Dimensions	156cm	184cm
Internal Dimensions	132cm	160cm
Height	70cm	70cm
Wall Thickness	12cm	12cm
Capacity	650L	985L
Filter/Heater	1800W eco heater with a max controllable temperature of 40°C	
Power Cable	7m cable	
Certification	UKCA, CE approved	
Warranty	2 years for the heater, 1 year for the liner warranty	

- Personalised**  
Changeable outer cover, select from a range of styles and colours.
- Efficient**  
Wave Eco Foam Core construction which is 50% more energy efficient than inflatable spas.
- Energy-saving cover**  
Inflatable weather-resistant cover retains heat. Includes childproof safety clips.
- Safe**  
7m waterproof power cable including RCD plug.
- WiFi controlled**  
Your customers can take full control of their spa even when they're not at home with our new WiFi controls.
- LED lights**  
Set the ambiance according to your mood with colour-changing LED lights.
- Anti-freeze system**  
Keep your spa safe over winter.
- Comfort**  
Built-in foam seats for extra relaxation.



Available in 1 size



Charcoal Flint Pebble Umber Graphite

(5 x interchangeable skins)

### Redefining relaxation!

Experience the pinnacle of luxurious relaxation with the Como from our range of Wave Rigid Eco Foam Spas. Elevate your leisure time to new heights with this exceptional hot tub that seamlessly combines supreme comfort with unmatched practicality. Designed to seat up to six people, this spa is perfect for kicking back with family and friends or enjoying a solo relaxation session. You can easily put together your Como hot tub in just 20 minutes without the need for any tools. Embrace a new era of energy efficiency with Como's revolutionary Wave Eco Foam Core, which is up to 50% more energy efficient than other portable hot tubs.



up to 6






External Dimensions	195cm
Internal Dimensions	165cm
Height	70cm
Wall Thickness	12cm
Capacity	985L
Filter/Heater	1800W eco heater with a max controllable temperature of 40°C
Power Cable	7m cable
Certification	UKCA, CE approved
Warranty	2 years for the heater, 1 year for the liner warranty

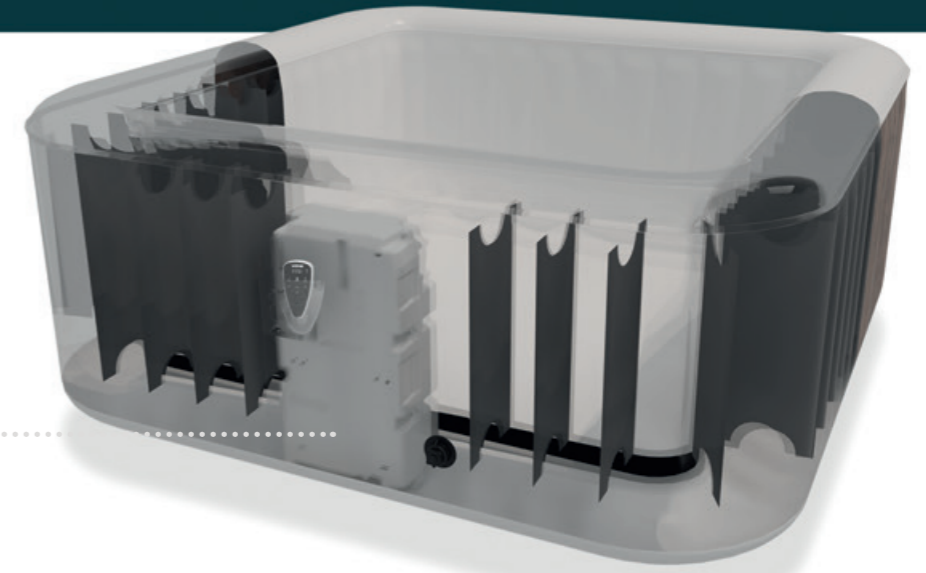
- Personalised**  
 Changeable outer cover, select from a range of styles and colours.
- Efficient**  
 Wave Eco Foam Core construction which is 50% more energy efficient than inflatable spas.
- Energy-saving cover**  
 Inflatable weather-resistant cover retains heat. Includes childproof safety clips.
- Safe**  
 7m waterproof power cable including RCD plug.
- WiFi controlled**  
 Your customers can take full control of their spa even when they're not at home with our new WiFi controls.
- LED lights**  
 Set the ambiance according to your mood with colour-changing LED lights.
- Anti-freeze system**  
 Keep your spa safe over winter.
- Comfort**  
 Built-in foam seats for extra relaxation.

# Fully integrated inflatable spas made with Wave Heat Integrated Technology (HIT)








## Why choose a Wave Spa with an integrated heater?

-  Runs 15% more quietly than competitor spas
-  Smoother lines for a cleaner look
-  Easier and cheaper to ship and store
-  Looks better in your customer's outdoor space
-  Wave deal with all after service queries



### Integrated heater

Here at Wave, your total relaxation is our priority, so we put as much love into our inflatable spas as we do our groundbreaking Rigid Eco Foam Spas. Our latest innovation is to integrate the heater into the wall of our inflatable hot tubs. Not only does this mean it looks nicer in your outdoor oasis, but it also runs up to 15% more quietly allowing you to fully relax! Our inflatable spas come in either the classic round or an elegant square shape and are available in two sizes and range of on trend colours.

- 
**Integrated heater**  
 Runs 15% more quietly and still heats to 40°C.
- 
**Safe**  
 5m waterproof power cable including RCD plug.
- 
**New range and colours**  
 Fresh new on-trend colours for 2024.
- 
**Integrated seating**  
 Unlike most inflatable hot tubs, Wave Spas have integrated seating.
- 
**Anti-freeze system**  
 Keep your spa safe over winter.



Available in 2 sizes



4 Person:



Dark Grey Sage Green

6 Person:



Grey Rattan Navy Sage Green

**Atlantic**

Introducing The Atlantic, our round inflatable spa model. The Atlantic's design is timeless, providing a classic aesthetic that complements any setting. With the same exceptional quality, ease of use and luxurious relaxation experience as all of our products, The Atlantic is the perfect choice for those customers that appreciate a traditional, rounded spa design.

up to 4

up to 6

External Dimensions	180cm	208cm
Internal Dimensions	140cm	168cm
Height	65cm	65cm
Capacity	800L	1000L
Filter/Heater	1800W eco heater with a max controllable temperature of 40°C	
Power Cable	5m cable	
Certification	UKCA, CE approved	
Warranty	2 years for the heater, 1 year for the liner warranty	



**Integrated heater**

Runs 15% more quietly and still heats to 40°C.



**Safe**

5m waterproof power cable including RCD plug.



**WiFi controlled**

Your customers can take full control of their spa even when they're not at home with our new WiFi controls.



**LED lights**

Set the ambiance according to your mood with colour-changing LED lights.



**Anti-freeze system**

Keep your spa safe over winter.



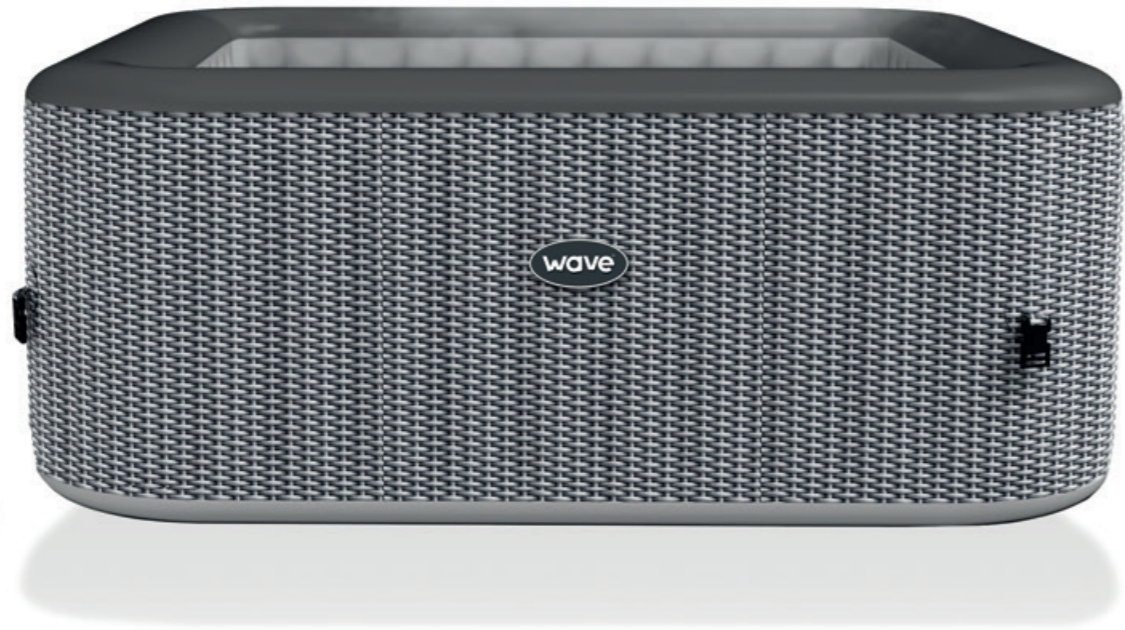
**Comfort**

Built-in foam seats for extra relaxation.

ATLANTIC



Available in 2 sizes



4 Person:



Navy Dark Grey Grey Rattan

6 Person:



Navy Dark Grey Sage Green Grey Rattan

**Pacific**

Say hello to The Pacific, our square inflatable spa model. The Pacific's modern and sleek square shape adds a contemporary touch to any environment. Offering the same exceptional quality, user-friendly features, and luxurious relaxation experience as our entire range, The Pacific is the ideal choice for customers seeking a spa with a distinct and stylish square design.

up to 4 

up to 6 

External Dimensions	155cm x 155cm	185cm x 185cm
Internal Dimensions	115cm x 115cm	145cm x 145cm
Height	65cm	65cm
Capacity	600L	600L
Filter/Heater	1800W eco heater with a max controllable temperature of 40°C	
Power Cable	5m cable	
Certification	UKCA, CE approved	
Warranty	2 years for the heater, 1 year for the liner warranty	



**Integrated heater**

Runs 15% more quietly and still heats to 40°C.



**Safe**

5m waterproof power cable including RCD plug.



**WiFi controlled**

Your customers can take full control of their spa even when they're not at home with our new WiFi controls.



**LED lights**

Set the ambiance according to your mood with colour-changing LED lights.



**Anti-freeze system**

Keep your spa safe over winter.



**Comfort**

Built-in foam seats for extra relaxation.



# Become a Wave Partner today...

**At Wave Spas, we believe in partnerships that empower your business to thrive. Join us as a Wave Partner and unlock a world of opportunities.**



## EDI Options

Take advantage of the convenience of automated order processing, invoicing and more, as we bring efficiency and precision to your transactions with us.



## Sales and Marketing Support

Wave Spas is dedicated to your success. As a Wave Partner, you'll receive comprehensive marketing support every step of the way. We're committed to helping you promote and sell our products.



## In-store POS Package

Create in-store displays that engage and guide your customers through the buying process. We will ensure you have all of the assets and information you need to create perfect in-store displays.



## Product Information

Should you ever need additional product information, our team will be on hand to help when you need it.



## Customer satisfaction is our priority

When you partner with Wave Spas, you have the option for us to handle any customer service queries, ensuring your customers receive top-notch support.



## CRM System Access

Gain exclusive access to our B2B portal, where you can monitor live stock levels, place orders, check order statuses, and easily download marketing materials. Stay in control of your business with real-time information at your fingertips.



## B2B Portal

Gain exclusive access to our B2B portal, where you can:

- Provided with unique login
- Gain access to bespoke price lists
- Place orders
- Pay invoices
- Track shipping



## Flexible Delivery Options

Domestic purchase, direct container and dropship/marketplace options are all available to our partners.



**wave**<sup>™</sup>  
www.wavespas.com

**UK:**  
9-10 Charlotte Sq, Newcastle, NE1 4XF

**USA:**  
18905 Kill Creek Rd, Edgerton, KS 66021

**NL:**  
Vollenhovermeer 41, 5347 JV Oss,  
The Netherlands



sales@waveglobal.com