



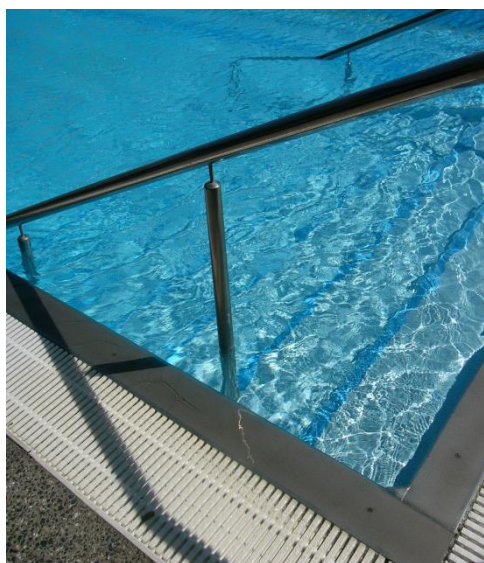
High Performance Paint

Product Data Sheet



EPOTEC AQUA 1K

NOV 19



DESCRIPTION: A high performance waterborne single pack pool coating. Ideal waterborne replacement for older Chlorinated Rubber coatings but with the added benefit of good UV (Chalking) resistance and it is not a solvent based product.

TYPICAL USES: Coating of swimming pools where the substrate is concrete (old or new), plaster, Marblesheen/Pebblecrete finish or fibreglass and a single pack product is desired.

PERFORMANCE:

- Single pack product.
- Excellent inter-coat adhesion.
- Fast drying (at temperatures 10 – 25°C).
- Easy maintenance and touch up.
- Easy clean of brushes and rollers.
- Good exterior UV resistance (little chalking)
- It can be used in heated spa pools maximum 28°C.

LIMITATIONS:

- Do not apply if air or surface temperature is likely to drop below 10°C during application or drying.
- Thin film coating so wear life limited unless multiple coats applied. For hard wearing pool paint use EPOTEC HB or NT EPOXY.
- New fibreglass needs a minimum of 4-5 days cure before EPOTEC AQUA 1K is applied. Failure to do so may cause coating failure.
- Allow to cure for a minimum of 7 days before filling pool.

TECHNICAL DATA:

Resin:	Modified acrylic
Solvent:	Water
Finish:	Gloss
Colour:	Std Colours
Touch Dry (minimum):	2 hours @ 20°C
Recoat Time (minimum):	4 hours @ 20°C
Full Cure:	7 days
Primer:	See over
Number of Coats:	2-3 required (See over)
Dry Film Thickness:	27-34 microns at 12-10 m ² /litre
Wet Film Thickness:	83-100 microns at 12-10
m ² /litre Durability:	Good
Thinning and Clean Up:	Water
VOC:	42-60 g/litre
Pot Life:	Not Applicable
Pack Size:	4 Litre

SPREAD RATE:

Theoretical Coverage: 10-12 m²/litre
Coverage depends on surface profile and porosity.

COMPUTER CODES:

Epotec Aqua 1K Clear Base	77-1730
Epotec Aqua 1K White Base	77-1301

Coating Technologies Limited, 2 Wagener Place, Mt Albert, Auckland, New Zealand

Phone: 0064 9 837 0897 www.cotec.co.nz

Technical information given verbally or in writing is based on knowledge and research, given in good faith and believed to be reliable, but no guarantee of accuracy is made or implied. Since methods and conditions of use may vary, the user should conduct their own tests to determine the suitability of the product for his own requirements. Beyond our control, all merchandise is sold and received subject to the condition that our liability whether express or implied for any defect in quality, or for any lack of fitness for the specified use thereof, is limited to the return of the purchase price if a written claim is made within 14 days from the date of delivery. It is recommended that the user makes his or her own tests to determine the suitability of the product for his own requirements.

EPOTEC AQUA 1K

SURFACE PREPARATION:

(Refer to "Surface Preparation and Paint Systems" for full details). To ensure a successful application all surfaces to be coated must be clean, dry and stable. Pools which are in use will have a build-up of body fats on surfaces which come in contact with the body, and on the top 1 metre of walls. If not removed blistering and delamination occurs. Use alkali detergent wash to remove. All cracks and joints need to be treated as appropriate to suit the situation. Do not expect paint to bridge moving cracks/joints successfully.

Note: Commencement of work on a surface means in general you accept that surface. If any doubt about condition etc, seek advice.

OLDER CONCRETE POOLS INCLUDING PEBBLECRETE/MARBLESHEEN:

The concrete can be of a lower quality and inconsistency in composition and strength. If the old paints have been removed by sand blasting or diamond grinding it is required to prime the bare concrete with EPOTEC WB EPOXY SEALER. This will seal and bind the surface and allow the EPOTEC AQUA 1K to give a good build which extends the life of the coating.

Note: Old pools have voids/holes in the concrete, this can arise after the surface has been sealed and the first coat applied. If this happens, fill the main holes with fairing filler, sand and re-coat. If there are hundreds of holes/air pockets it becomes very difficult and there is no easy solution. Multiple coats may work to reduce the problem but it will not completely eliminate a bad surface. In a worst case scenario, if some imperfections in the surface are unacceptable the surface must be surface plastered.

OLD FIBREGLASS:

Ensure thoroughly cleaned. Sand surface with #60-80 grit sand paper to create profile and remove oxidised layer. EPOTEC WB EPOXY SEALER can be applied to enhance adhesion.

NEW FIBREGLASS:

Newly applied fibreglass (including any repairs) needs a minimum of 4-5 days curing before EPOTEC AQUA 1K is applied. EPOTEC WB EPOXY SEALER can be applied to enhance adhesion.

NEW CONCRETE:

Concrete must be cured for 28 days (minimum) and free from release agents, oils, fats etc. Surface laitance must be removed by either light abrasive blasting or acid washing (10% hydrochloric acid). Use CONCRETE ETCH 10% (see data sheet). Surface prior to painting should be even textured similar to #80 grit sand paper. (Refer to EPOTEC WB EPOXY SEALER data sheet for more information on the application of sealer).

SUBSTRATE/SURFACE	APPLICATION
Tiles	×
Concrete	✓
Fibreglass	✓
Acrylic	×
Polyethylene	×
Plaster	✓

SUBSTRATE	EPOTEC WB EPOXY SEALER	EPOTEC AQUA 1K	COATS
Concrete/Plaster	5-10 m ² /L/Coat	8-10 m ² /L/Coat	2-3
Fibreglass	10 m ² /L/Coat	10-12 m ² /L/Coat	2-3
Pebblecrete	5-8 m ² /L/Coat	7-8 m ² /L/Coat	3-4
Marblesheen	5-8 m ² /L/Coat	8-10 m ² /L/Coat	3-4
Painted Smooth	N/A	8-10 m ² /L/Coat	2-3

OLD CONCRETE – PAINTED:

For all re-coats, the first step is water blasting with detergent mix to remove body fats. Remove any flaking or blistering areas using a wire brush or grinder. Epoxy coatings (Two Pack) may be over coated. Check with CTL first. Other paints must be removed by light grit blasting the surface. Then treat as new concrete.

PAINTED SURFACES	EPOTEC AQUA 1K
Chlorinated Rubber	✓
Acrylic Paint	✓
Old Epoxy	✓
Bitumen paint	×

Note: Surface MUST BE DRY to avoid blisters forming during the drying period.

FOR FURTHER INFORMATION ON PREPARATION, CONTACT COATING TECHNOLOGIES TECHNICAL DEPARTMENT.

APPLICATION:

ROLLED: Use a short-medium nap (10-15 mm max) roller. (Dacron or Mohair, of good quality). Apply 2-4 coats.

BRUSHED: For small areas and cutting in, use a conventional quality brush.

SPRAY: AIRLESS: Use 13 -15 thou tips e.g. 515, pressure 2500 – 3000 psi.

Apply where possible away from direct sunlight. Surfaces warmed by sun, and now shaded for rest of day are ideal. Pools should be allowed to cure for 7 days minimum (at 15°C) before filling.

THINNING & CLEAN UP:

Spray use 5 -7% water. Brush or roll 2 – 3% if the substrate is very hot. Clean up with WATER.

ENVIRONMENTAL:

Do NOT spill or discard product into storm water or open drains. NOTE: Soak up spills with absorbent material and dispose of properly. DO NOT POUR paint or wash down storm water or water courses. ALWAYS dispose of in accordance with local Government regulations. If spraying use suitable respiratory protection. Refer to the MATERIAL SAFETY DATA SHEET.