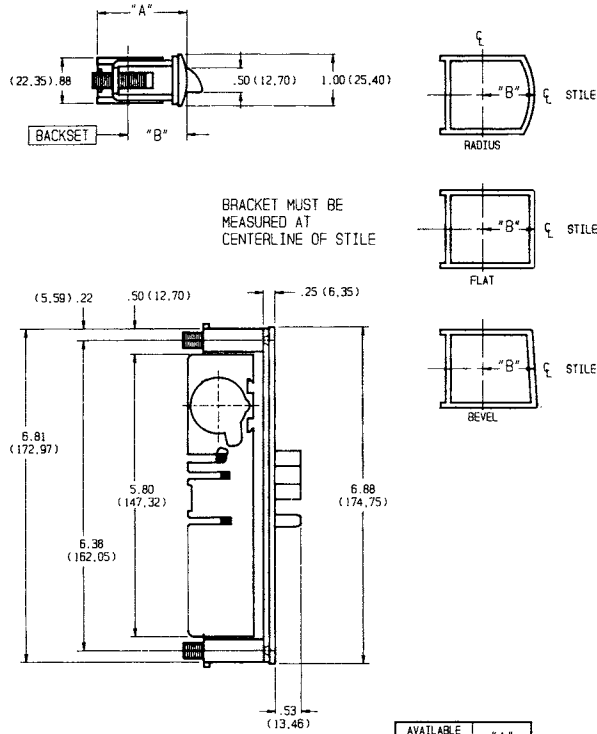


4710 SERIES DEADLATCH

DIMENSIONS



SHOWN RIGHT HAND. HANDING REVERSIBLE BY REMOVING BOLT AND REINSTALLING FOR OPPOSITE HAND. ADJUSTABLE TUBE-SPACER YOKES CAN BE REMOVED IN FIELD IF NOT REQUIRED.

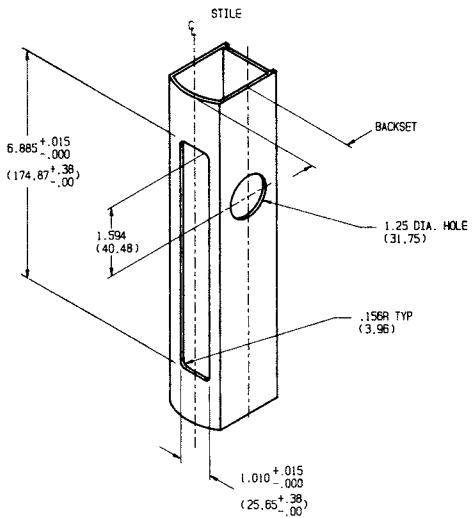
AVAILABLE BACKSETS	"A"	
7/8	1.51	(38.35)
31/32	1.60	(40.640)
1 1/8	1.76	(44.704)
1 1/2	2.14	(54.356)

AVAILABLE FACE PLATES	CATALOG NUMBER
FLAT	4710
RADIUS	4711
LEFT BEVEL	4712 (LH)
RIGHT BEVEL	4712 (RH)
RADIUS WITH WEATHERSTRIP	4711 W

RELATED HARDWARE & ACCESSORIES

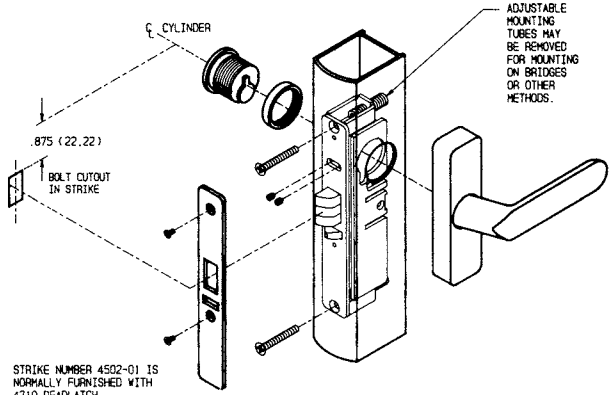
- HANDLE OPERATORS - SPECIFY 4560, 4561, 4565, 4567 OR 4568.
 - CYLINDERS ARE AVAILABLE FROM ADAMS RITE KEYED DIFFERENT OR KEYED ALIKE IN PAIRS.
 - CYLINDER GUARD - SPECIFY MS 4043.
 - OPTIONAL STRIKES.
- SEE CATALOG FOR ADDITIONAL DETAILS.

INSTALLATION



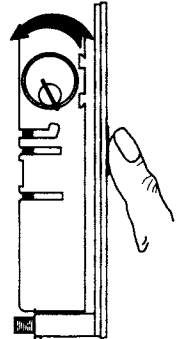
STILE PREPARATION

(IDENTICAL TO MS 1850A SERIES)

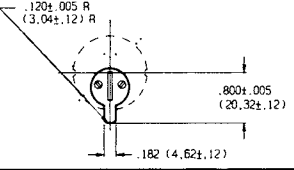


LATCH & CYLINDER INSTALLATION

LATCHBOLT HOLDBACK FEATURE



A REVERSE TURN OF THE KEY (WHILE BOLT IS HELD FULLY RETRACTED) RETAINS THE BOLT, ALLOWING THE DOOR TO BE FREE SWINGING.



4700 SERIES LATCHES ARE OPERABLE BY ANY STANDARD 1 5/32" DIAMETER MORTISE CYLINDER WITH SPECIAL "MS" CAM DIMENSIONED AS SHOWN. CYLINDERS WITH "MS" CAM CAN BE READILY OBTAINED FROM MOST CYLINDER MANUFACTURERS.
* 1 5/32 = 29.36 mm.

DATE: SEPTEMBER, 90

ADAMS RITE MANUFACTURING COMPANY

CITY OF INDUSTRY, CALIF. 91740

REV 8

80-0180-25