

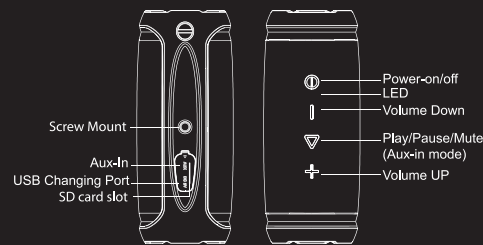


SpinX Bluetooth Speaker

USER MANUAL



Overview of BoAt SpinX



To Charge

1. Make sure the battery is completely charged before its first time use.
2. Connect the Micro-USB cable that comes with the product in the DC IN port on the speaker and the USB port on a computer/ or a USB AC Adapter.

LED Indicator	Battery Status
Flashes Blue & Green	Battery is low (<10%)
Solid Red	Battery is charging
Solid Green	Fully Charged

Note: The battery will power off automatically upon reaching below 3 percent (<3%)

To Power on:

Press the button until you hear a beeping sound tone and the LED indicator light comes on.

To Power off:

Press the until you hear a tone and the LED indicator starts flashing

Bluetooth connection:

1. Press the button until you hear a beeping sound and the LED indicator has started flashing blue.
2. From bluetooth settings on your phone, search and select "boAt Stone SpinX" from the list of options.
3. Upon Pairing, the LED indicator turns solid blue.

Note:

- When switching the speaker on again, it will automatically reconnect to the last device it has been paired with (The Speaker can memorize a maximum of up to 8 paired devices).
- If after 10 minutes in pairing mode, no devices are paired then the speaker will automatically shut down.

Music control:

- | | |
|------------------------------------|----------------|
| Play/Pause | Click |
| Volume Down | Click |
| Volume Down | Click |
| Next track | Press and hold |
| Previous track | Press and Hold |
| Switch Bluetooth mode/ Aux-in mode | Click |

Speakerphone (in Bluetooth Connection):

- | | |
|---------------------------|----------------|
| Answer an incoming call | Click |
| Reject an incoming call | Press and Hold |
| End the current call | Click |
| Redial last-dialed number | Press and Hold |

Disconnecting Bluetooth:

Press and hold the "", "" buttons simultaneously until you hear a beeping tone and the LED indicator starts blinking blue meaning the device has disconnected, and is now ready for pairing with a new device.

Pair 2 To Hear The Magic and Get The Party Started! (True Wireless sound Function)

With 2 SpinX speakers, you can connect them both to synch your audio through both the speakers. For reference, call the first SpinX as "Main Speaker" and the second SpinX as "Secondary Speaker"

1. Ensure both speakers are switched off and not paired to any device. Switch on the main speaker, it will be in pairing mode and the LED light will flash blue at an interval of 1 second.
2. Double tap button on the main speaker to enable TWS function. The LED will now flash blue and green.
3. Switch on the secondary speaker and wait for about 3-5 seconds. The two speakers will be connected to each other and the LED will be constantly blue on both the speakers.
4. Once connected to each other, switch on the bluetooth mode on your mobile device and pair to the main speaker listed as "boAt Stone SpinX". You can now play music through both the speakers and get the party started!

Listening to music from an external audio source:

1. Switch on the speaker
2. Using an AUX Cable (Ø3.5mm), connect to an external device using the AUX-port built into the speaker.
3. It will automatically go into AUX-in mode, and the LED indicator should turn green to confirm this.

Note: While the speaker is in AUX-in mode, skipping songs and other speakerphone functions are not available

Specifications:

- Bluetooth Version: 4.2
- Support: A2DPV1.2, AVRCPV1.4, HPV1.6, HSPV1.2
- Wireless work distance: 10meters
- Rated Power: 2 x 5W
- Driver Unit: 2 x Ø40mm (4Ω, 6W)
- Frequency response: 180Hz-18kHz
- Signal-to-noise ratio: >80dB
- Battery type: Lithium-ion (3.7V/2000mAh)
- DC input voltage/current: 5V/1A
- Playtime: 6-8 hours (varies by volume level and content)
- Battery charge time: 3-4 hours
- Dimensions: 158.5 x 65 x 62.5 mm
- Weight: 355g

CAUTION:

- Keep the speaker and its accessories away from small children, as they are potential choking hazards
- Do NOT let water and other liquids, fire and other extreme heats and strong magnetic fields near the speaker
- Do NOT use this speaker at high volumes for extended periods of time, as this can cause permanent hearing damage or loss.
- Do NOT drop or knock the speaker onto or into hard surfaces
- Chemicals and detergents should NOT be used to clean the speaker
- DO NOT scrape the surface of the speaker with sharp objects
- Do NOT make any unauthorized alterations to this product

Troubleshooting:

If it is not powering on
Charge the speaker and ensure that it has sufficient battery

If device connection cannot be made

Please try the following:

- The Bluetooth device supports a A2DP profile (for the speaker)
- The speaker is within 10meters of the device
- The speaker is in pairing mode and that the LED indicator is blinking blue

In case there is no sound

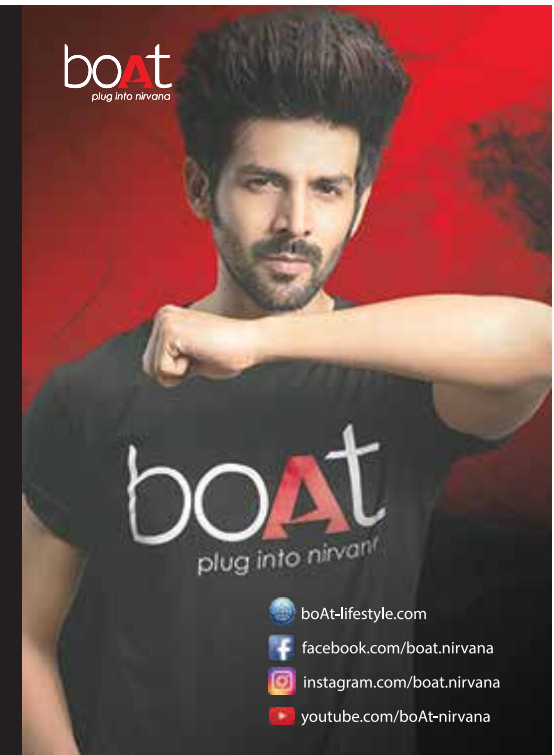
- Make sure the volume on both your device and speaker are at an audible level
- Make sure your device is successfully paired with the speaker, and that LED indicator has turned a solid blue

In case of poor sound quality

Move the device closer to the speaker and remove any obstacle that might be between them

Reset

Long press the power button for 15 seconds if the speaker malfunctions. The speaker must be semi-charged in order to reset, so make sure it has battery left.



boAt-lifestyle.com

facebook.com/boat.nirvana

instagram.com/boat.nirvana

youtube.com/boAt-nirvana