

Beard Trimmer Model Name: GROOM 700 User's Manual

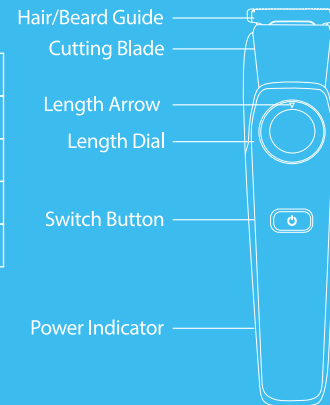
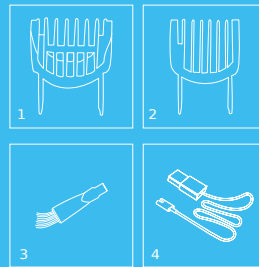
HOW TO CHARGE:

1. Turn off the hair clipper and insert the charging cable into the hair clipper.
 2. Plug the USB plug into the phone charger or computer and then charging indicator will light up.
 3. After charging is complete, pull out the plug.
- Please charge in the environment of 5 degrees Celsius to 35 degrees Celsius.
•The charging voltage of this product is 5V. Charging time is about 2.5 hours.
2.5 hours of continuous operation after full charge.

PRODUCT OVERVIEW

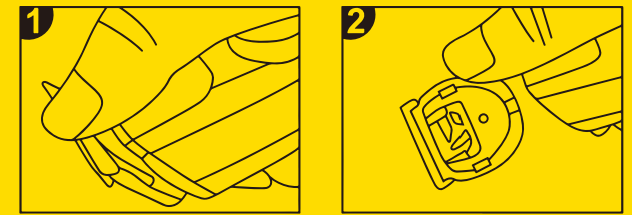
Component Names

1	1-10mm Hair & Beard Guide
2	11-20mm Hair & Beard Guide
3	Cleaning Brush
4	Charging Line
5	Oil Bottle



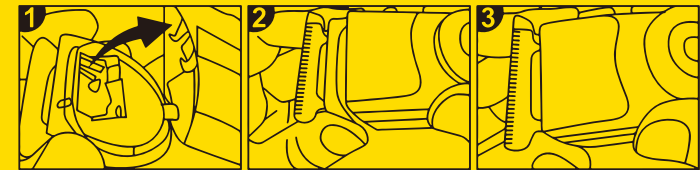
HOW TO REMOVE BLADE:

1. Put thumb on upper part of blade.
2. Push forcefully until the blade fall off.



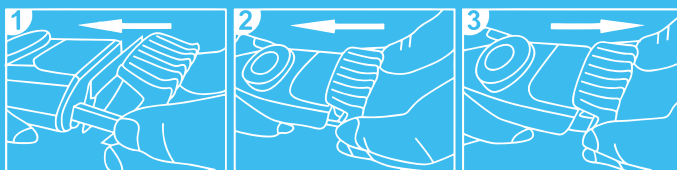
HOW TO INSTALL BLADE:

1. Align the blade bottom and machine body as image Shows.
2. Push the blade in showed direction forcefully.
3. Installation finished.

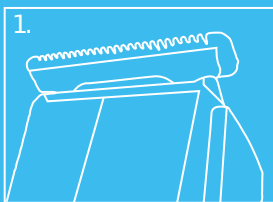


HOW TO CHANGE GUIDE:

1. Insert the Guide into the holes on both sides of blade.
2. Push in Guide until It clicks, guide is installed successfully.
3. To remove the guide, pull out the guide in the direction as image shows.



HOW TO TRIM HAIR:



1. Install the Hair Cutting Blade If you do not need to adjust cutting length you may start hair trimming now.

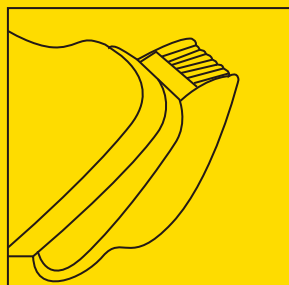


2. To adjust cutting length, insert a hair guide according to your desired hair length.
Say, if you want hair to be 8mm long then please insert the 1-10mm hair guide.



3. Rotate the length dial to set your desired length (Align the arrow to the corresponding number).
Say,if you want hair to be 8mm long align the arrow to 8mm.

VERY IMPORTANT!



1. Ensure the flat part of the guide is in full contact with the skin as the left image shows. Or it may cause an uneven cutting.
2. Move the trimmer against the direction of hair growth. Since all hair does not grow in the same direction, you need to move the device in different directions (upward, downward, or across).
3. For very short cuts (stubble look), do not use a guide, then the trim length would be 0.5mm