



boAt

## IMMORTAL IM-200 WIRED GAMING HEADPHONES

Thank you for choosing boAt IMMORTAL IM-200, 7.1 Channel USB Gaming Headphones meant for PC. This manual is meant to guide you through the functionality of the wired over-ear gaming headphones. IM-200 virtual series gaming headphones is the essential headphones that focuses on what truly matters "Balanced and Virtual Surround sound" for all your gaming and music needs. We strongly advise that this manual is thoroughly read before use, and referred to in times of difficulty, so that you can always be easily guided towards the shores of gaming bliss. Let's attack!

### Package Contents:

- boAt IM-200 Gaming Headphones
- User Manual
- Warranty card
- Microphone Windshield

### System Requirements:

- Operating Systems Windows XP/7/8/10
- One Free USB port 2.0/3.0

### Technical Specifications:

Model	Immortal-IM 200
Speaker driver	50mm
Speaker Sensitivity	100±3dB
Speaker Impedance	32 Ohms
Plug/connectivity	USB
LED type	Breathing LED ( RED/GREEN/BLUE)
MIC Sensitivity	50-10KHz
MIC Impedance	20Kohms
MIC Pattern	Unidirectional MIC
Cord length	2m
Braiding type	Braided
Shape	Round
7.1 application	7.1 Surround Sound

### Quick Start:

- Plug your headset into computer's USB SLOT (Any 2.0/3.0)
- Adjust the volume before listening
- Adjust the microphone direction

### On-Headset Volume Control:

Adjust the volume by scrolling volume wheel up or down.

### Downloading Application:

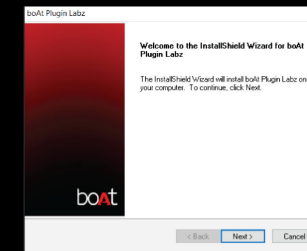
- IM-200 series comes with a software boAt Plugin Labz\*
- Scan the QR code to download the boAt Plugin Labz



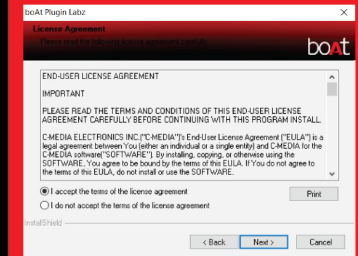
### Installation:

(Note: Keep the headset plugged into computer's USB SLOT while installing)

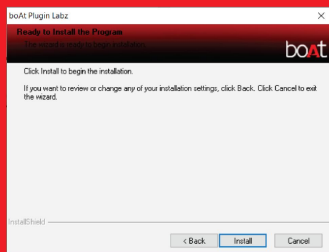
Step 1. Click 'Next' to start installation



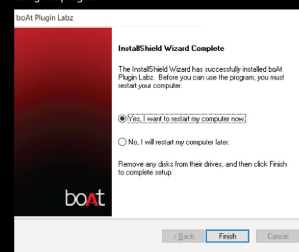
Step 2. Click 'I accept the terms of the license agreement' and then 'Next'



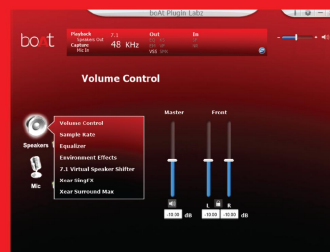
Step 3. Click 'Install' to begin installation



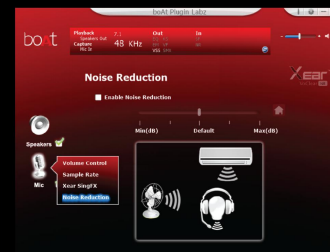
Step 4. Click 'Finish' to restart the computer before you begin using the program



### Speaker Customization:



### Microphone Customization:



### 7.1 Customization:



### Safety Guidelines:

- In order to achieve maximum safety while using boAt IM-200, we suggest following guidelines

• If you have trouble operating the device and troubleshooting doesn't work, unplug the device and contact boAt customer support

• Do not try to fix the device by yourself anytime (doing so will void your warranty)

• Keep the device away from liquid, humidity and moisture.

• Listening to excessively loud volumes over extended periods of time can damage your hearing. We recommend that you reduce the volume to a comfortable level when listening for prolonged periods of time. Take good care of your hearing.

### Maintenance and Use:

The boAt IM-200 requires minimum maintenance to keep it in best condition. Once a month we recommend you unplug the device from the computer and clean it using a soft cloth or cotton swab.