

BLITZ
1500

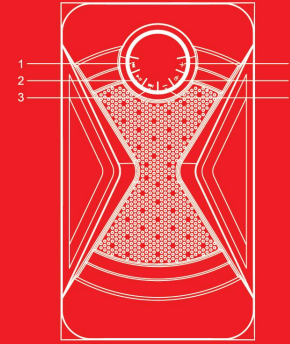
boAt

**POWER IS
POWER****BLITZ**
1500

Thank you for purchasing the boAt Blitz 1500. You are now just a step away from the realm of Nirvana. Please follow this user manual carefully in case of any doubt that may arise. You can stay plugged into the sound with Bluetooth wireless technology, AUX, USB, FM or SD Card. This 2.1 Channel multimedia speaker has been designed for smooth interface that requires minimal of efforts. It's time to delve deeper into Nirvana.

Package Contents:

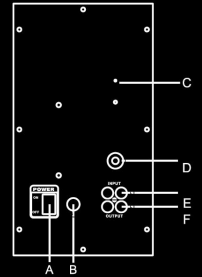
- 1x Subwoofer
- 2x Satellite Speakers
- 1x Aux-in Cable
- 1x Remote Controller
- 1x User Manual
- 1x Warranty Card

**Subwoofer Front Control Panel:**

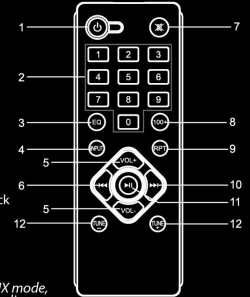
- 1. Previous Button:** Single tap to go to previous song on the playlist or previous FM channel
- 2. Play/Pause Button:**
 - Single tap to Play or Pause the playback
 - In FM mode, long-press to auto-search channels, short-press to stop auto-search
 - In Bluetooth mode, long press to disconnect
- 3. Next Button:** Single tap to go to next song on the playlist or next FM channel
- 4. Volume + :** Tap to increase volume
- 5. Mode Button:** Single tap to switch playback mode among BT/USB/SD /FM/AUX modes
- 6. Volume - :** Tap to decrease volume

Subwoofer Rear Panel:

- A. Power On/Off Switch
- B. Power Input
- C. FM Antenna
- D. Bass Knob
- E. Stereo Input : RCA connectors to take input from external audio source
- F. Stereo Output : Front Left & Front Right

**Remote Control:**

- 1. Standby:** Press this button to turn ON / OFF the subwoofer
- 2. Numeric Pad:** Choose track from 0 – 9
- 3. EQ Modes:** Tap the button to select among POP, ROCK, JAZZ, CLASSICAL or COUNTRY EQ modes
- 4. INPUT:** To switch playback mode among BT/USB/SD Card/FM/AUX modes
- 5. VOL +, - :** To increase or decrease the volume
- 6. Previous:** To return to the previous track
- 7. Mute:** To mute the sound
- 8. 100+ :** To select the track present after initial 100 tracks
- 9. RPT:** To repeat the audio track
- 10. Next:** To skip to the next track
- 11. Play/Pause:** To play or pause the playback / In FM mode, long press to auto-search channels
- 12. TUNE - / + :** To search for previous / next channel in FM mode

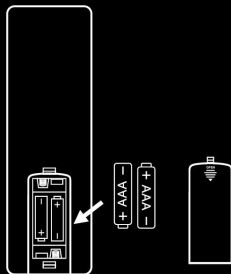


NOTE: "M"/"M" buttons don't work in the AUX mode, you can change tracks via the connected media device under AUX mode.

Battery Installation:

- Open the battery case and insert two AAA batteries and close the case
- Keep the remote controller within 5m range, aiming around 30° at the unit

Note: It is advisable to remove the batteries when the unit is not being used for a long period of time

**Setting Up Blitz 1500:**

- Plug the cable of the satellite speakers into the output jack on the rear panel of the subwoofer
- The audio cable has to be plugged into the input jack on the rear panel of the subwoofer for the AUX mode
- Plug the power cord into the power socket and switch on the unit, the front panel LED lights up in yellow and the unit automatically enters into Bluetooth mode
- You can use the volume buttons on the remote controller or the subwoofer to control the volume levels
- You can control the bass via the Bass knob present on the subwoofer
- You can press the Mode button on subwoofer or Input button on the remote controller to cycle through BT, AUX, USB, SD Card and FM modes

Bluetooth Connectivity / Pairing:

- To switch to Bluetooth mode, turn on the Bluetooth functionality on your phone or media device
- Search for 'Blitz 1500' from the list of available devices nearby and select the same

Important Notes:

- Never handle the power cord or its plug with wet hands when plugging or unplugging
- Ensure that the main power switch is in 'OFF' state before connecting the power cord to the power supply in order to avoid damage to the unit
- Never use a power cord after it has been damaged as it can easily cause an electrical shock or fire hazard

Troubleshooting:

- **Question:** The device cannot find "Blitz 1500" on Bluetooth?
- **Reason:** The speaker may not be in pairing mode.
- **Solution:** Check by tapping the Mode button or Restart the speaker to search again.

Specifications:

Bluetooth Version:	V5.0
Speaker Type	2.1 Channel Multimedia Speaker
BT Working Range:	10m
Driver Size:	4"*1 SW, 3"*2 Satellites
FM Frequency	87.5-108MHz
S/N Ratio	≥60dB
Frequency:	34Hz-20kHz
Impedance	4Ω SW, 4Ω Satellites
Output Power	50W
Connectivity Modes	BT/AUX/USB/SD/FM
Product Size-Subwoofer	W155*H289*D245mm
Product Size-Satellite	W90*H172*D102mm

Caution:

This symbol alerts you about the presence of uninsulated dangerous voltage within the product's enclosure that may be of sufficient magnitude to constitute an electric shock to a person or persons.



Important! This symbol alerts you to read and observe important warnings and instructions on the unit or in this manual.

Safety Precautions:

- Unplug the unit during storm or lightning and when it isn't being used over a long period of time
- Keep children away from the unit as it might pose a risk of electrical shock if used unsupervised
- If the speaker requires cleaning please ensure that it is done with the utmost of care. Furthermore, make sure it is turned off and unplugged from power socket. Do not use alcohol, benzene and other chemicals to clean the speaker, and use only dry cloth to clean. Do not allow the speaker within range of extremely hot or cold substances.
- Try to ensure that no physical damage comes to the speaker via falling, or coming into contact with hard surfaces or sharp edges.
- Do not dismantle the speaker in any way. If any issue arises with the speaker, please enlist the aid of a manufacturer. Please ensure that any servicing of the speaker is done through the service provider or manufacturer.
- If the speaker gets wet, please ensure that it is dried quickly and completely after coming into contact with water. Please do not allow the speaker to be submerged into water at any cost. The speaker is meant for indoor usage only.