

USER MANUAL

boAt



AAVANTE BAR 2400

5.1 CHANNEL 180W RMS Sound Bar
(with Subwoofer and Satellite Speaker)

USER MANUAL

Thank you for choosing the boAt Aavante Bar 2400 as the audio source for your home. Discover a new level of immersive, cinematic audio experience at home with the boat Aavante Bar 2400. With a powerful 180W RMS total output, this sound bar brings every aspect of your entertainment be it a song, show or movie to life. The 5.1 channel sound system provides a balanced surround sound for your movies, music and even video games and you can experience cinematic sound that revolves around you. Stay plugged into the sound with an array of wired connections, USB and Bluetooth® wireless technology. Bring your home to life with the boAt Aavante Bar 2400. We request that this installation guide be carefully read for proper usage of the device.

COMPONENTS LIST

- Soundbar
- Wired Subwoofer
- Adaptor
- User Manual
- Screws for Wall-Mount
- Satellite Speakers (2x)
- Remote Control
- AUX Cable
- Warranty Card
- Catalogue

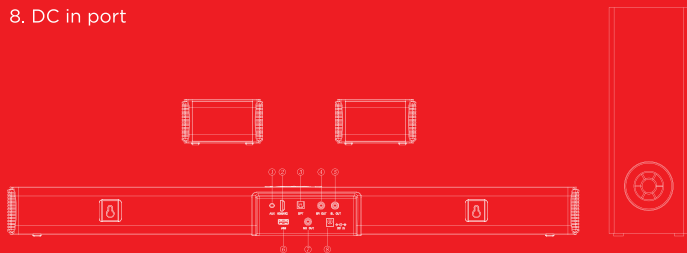
SAFETY & WARNINGS

Caution

- Read the safety, installation and operating instructions in this user guide before operating the product.
- Power and speaker wires should be routed so that they are not likely to be walked upon, kicked or pressed by items placed on or against them. Pay special attention to cords from plugs, power receptacles and the point where they exit from the product.
- The product should be situated away from heat sources such as radiators, stoves or other products, including amplifiers that produce heat. Naked flames such as lighted candles should not be placed on this product.
- To reduce the risk of fire or electric shock, do not expose the product to dripping, splashing or excessive moisture such as in a sauna or bathroom. Do not use this product near water, for example, near a bathtub, washbowl, kitchen sink, laundry tub, in a wet basement or near a swimming pool.
- Never insert objects into this product through openings as they may touch dangerous voltage points or short-circuit parts that could result in a fire or electric shock.
- Do not use attachments or accessories not included with this product.
- Do not place this product on an unstable cart, stand, tripod, bracket or table. The product may fall causing serious injury to someone or serious damage to the product. Any mounting of the product should follow the instructions in this user guide.
- Do not attempt to service this product by yourself, as opening or removing covers may expose you to potentially dangerous voltage or other hazards. Refer all servicing and repairs to qualified service personnel.

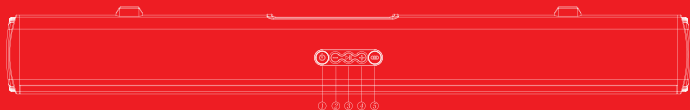
OVERVIEW

- 1.AUX port
- 2.HDMR(ARC) port
3. Optical port
- 4 Satellite right out port
5. Satellite left out port
- 6.USB port
- 7.Subwoofer out port
8. DC in port



SOUND BAR CONTROL PANEL

1. POWER: press to switch on/off the sound bar;
2. - :Short press to skip to previous track & long press to decrease the volume.
3. ▶|| :press to play/pause the music
4. + :Short press to skip to next track & long press to increase the volume
5. Mode: Short press to change the modes;



SOUNDBAR PORTS



HDMI
(ARC)



OPT



SATELLITE
SPEAKER
PORTS



AUX



USB



SW OUT



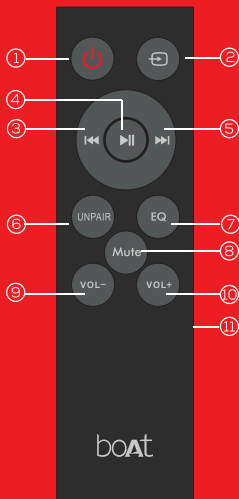
DC IN

1	HDMI(ARC)	Use to connect compatible devices using an HDMI cable (not provided)
2	OPTICAL IN	Use to connect compatible devices using an optical cable (not provided)
3	SATELLITE PORTS	Used to connect left & right satellite Speakers
4	AUX IN	Use to connect compatible devices using 3.5mm-3.5mm stereo jack cable (provided)
5	USB IN	Use to connect a flash drive for direct MP3 playback (FAT32 format and 64GB max)
6	SW OUT	Use to connect the subwoofer
7	DC IN	Used to connect the DC output jack of subwoofer

LED DISPLAY

1	RED LED	Standby Mode
2	bt	Bluetooth Mode
3	USB	USB Media Mode
4	AUX	AUX Input Mode
5	Opt	Optical Mode
6	Arc	HDMI(ARC) Mode

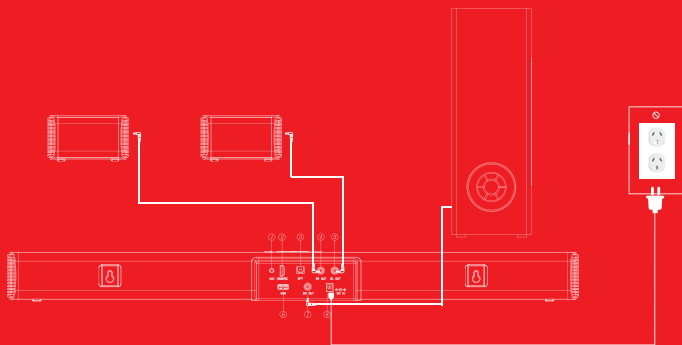
REMOTE CONTROL



	Button	Function
1		Switch on/off the soundbar
2	Mode	To switch between modes - BT, Aux, Optical, HDMI ARC & USB
3		Previous Track
4		Play/Pause
5		Next Track
6	Unpair	Disconnect soundbar from the connected device under bt mode
7	EQ	Switch EQ modes EQ 1- Music EQ 2 - Movies EQ 3 - News EQ 4 - 3D EQ 5 - Flat EQ 6 - Classical EQ 7 - Rock EQ 8 - Pop EQ 9 - Jazz EQ 10 - Live EQ 11 - Club EQ 12 - Dance By default, EQ 1 stays on.
8	Mute	Mute soundbar
9	Vol-	Decrease volume
10	Vol+	Increase volume
11	Battery Compartment	for AAA batteries

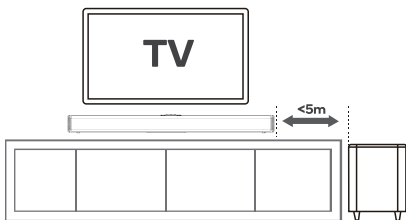
INSTALLATION

- Place the Soundbar on table or Wall mount it
- Connect the subwoofer using the subwoofer out port
- Connect the Left Satellite Speaker to the left speaker port using the provided wire
- Connect the right Satellites speaker to the right speaker port using the provided wire
- Place the Satellite speakers at the back side of the room in the left & right orientation



PLACING THE SOUNDBAR ON AN ENTERTAINMENT UNIT

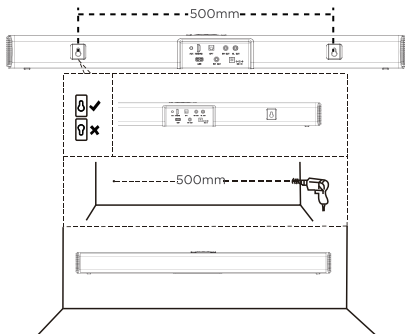
If your TV is placed on an entertainment unit, you can place the soundbar directly in front of the TV stand, centred with the TV screen. If the surface of the table is flat, the soundbar stays firm on its metal feet.



WALL MOUNTING THE SOUNDBAR

This soundbar can be mounted on your wall. Follow the instructions below:

Note: If you aren't confident in mounting this product yourself, please seek advice from a qualified trades person.



1. Mark and drill two parallel holes, 500mm apart on the wall. Secure the supplied anchors and screws into the holes. Ensure the screws are protruding 5mm from the wall.

Note: Anchors are only required when mounting onto a solid wall.

Anchor



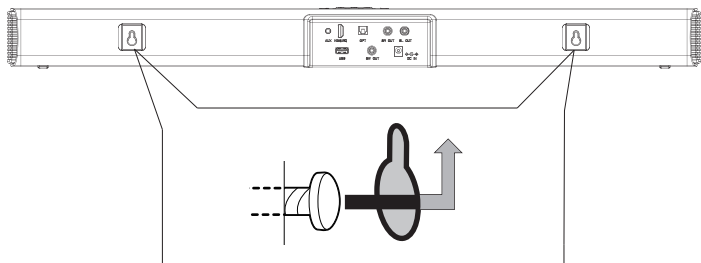
Solid wall (i.e., solid brick, solid concrete, solid wood)



Drywall, plastered wall etc.

2. Hang the soundbar on the fastening screws.

3. Gently push the soundbar in a downward direction to lock and secure in place.



OPERATION

Power ON/OFF

Utilize the provided power adaptor to connect the DC port of the soundbar to a power socket.

1. Press the 'Power' button to switch on the soundbar; the device automatically enters into Bluetooth mode.
2. Press the 'Power' button again to switch off the device.

Note: The soundbar gets automatically switched off if there is no operation performed for 15 minutes.

Bluetooth Connectivity

1. Turn on the soundbar; the device goes into 'bt' mode by default
2. On your media device under Bluetooth functionality search for "Aavante Bar 2400" when both the devices are within the Bluetooth transmission range, and select the same to establish Bluetooth connectivity (Press '0000' if asked for a code)
3. Once connected, the 'bt' stays stable on the LED display
4. The soundbar gets reconnected to the last paired device by default within working range whenever the soundbar gets switched on subsequently
5. Press the 'Mode' button on the soundbar control panel or 'UNPAIR' on the remote control to disconnect it from the current paired device.

Playback functionalities under Bluetooth mode

1. Press the Play/Pause button on the soundbar control panel or "▶||" in the remote control to play/pause the music.
2. Short press the "-" button the control panel to return to previous song and long press the same to decrease volume.
3. Short press the "+" button on the control panel to skip to next song and long press the same to increase volume.

HDMI (ARC) Mode

1. Plug in HDMI(ARC) cable into the HDMI(ARC) port on the soundbar and plug in the other side to a TV or other media device with HDMI(ARC) port.
2. Short press the Mode button in steps to switch to HDMI(ARC) mode; red LED stays solid indicating HDMI(ARC) mode.
3. Short press the “-“ button to decrease volume.
4. Short press the “+“ button to increase volume.

Optical Mode

1. Utilize an optical cable to connect the soundbar and TV / other media device with optical port.
2. Short press the Mode button in steps to switch to Optical mode.
3. Short press “-“ to decrease volume.
4. Short press “+“ to increase volume.

AUX Mode

1. Utilize the provided 3.5mm cable to connect the soundbar to your mobile device.
2. Short press “Mode” button in steps to switch to AUX mode; indicated by “Aux 1” on the LED display.
3. Short press VOL-/PREV button to decrease volume
4. Short press VOL+/NEXT button to increase volume

USB Mode

1. Plug in your USB drive into the soundbar’s USB port
2. Short press “Mode” button in steps to switch to USB mode; indicated by “USB” on the LED display
3. Short press the “-“ button to decrease volume
4. Short press the “+“ button to increase volume

Mode Switch

The mode gets rotated as per the following sequence:
BT-AUX-OPTICAL-HDMI (ARC)-USB

TECHNICAL SPECIFICATIONS

Model	boAt AAVANTE BAR 2400
Technology	USB, Optical, HDMI(ARC), AUX, Bluetooth v5.0
Drivers Size	2.25x2(FR.FL) + 2.25'x2(C) + 2.25x2(SR.SL) + 5.25'x1(SW)
Number of Drivers	7
Maximum Output RMS	35Wx2(FR.FL) + 30Wx1(C) + 10Wx2(SR.SL) + 60Wx1(SW) = 180W R.M.S
BT Transmission Range	Up to 10m
Bluetooth version	V5.0 + EDR
Dimensions	Soundbar: 65H*90D*780L mm Subwoofer: 118W*335H*240D mm Satellite: 65H*90D*120L mm