



boat

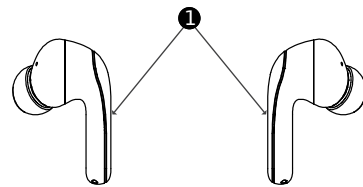
AIRDOPES 155

Get ready to immerse yourself in music with your very own pair of boAt Airdopes 155. Please consider this manual as your guiding map to the unparalleled shores of musical bliss. Knowledge of Bluetooth and device connectivity is essential for steering this boAt. Therefore, we strongly recommend thoroughly reading this manual. Also, you can refer to this if you face difficulties.

PACKAGE CONTENTS

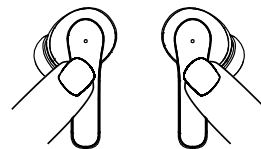
- 1) 1x Pair of TWS Earbuds
- 2) 1x Charging Case
- 3) 2x Pairs of Extra Earmuffs (Small & Large)
- 4) 1x User Manual
- 5) 1x Warranty Card
- 6) 1x Catalogue
- 7) 1x FAQ Card
- 8) 1x USB Type-C Charging Cable

1) CTC (Capacitive Touch Control) / Power Button



Step 1 To switch the earbuds on (Smart Power On), simply open the lid of the charging case (when the earbuds are inside). Courtesy of our IWP™ (Insta Wake N' Pair) technology, the earbuds power on automatically. This is indicated by the white LED light flashing for 1 second followed by a voice prompt.

OR



Step 2: After powering on, the earbuds are ready to be paired and enter the Connection mode. This is indicated by the white LED flashing slowly on the primary earbud.

CONNECTION MODE:

Step 1: Turn on the Bluetooth functionality on your phone/media device and scan.

Step 2: Select 'Airdopes 155' from the list of available devices to pair.

Congratulations! Your earbuds are now connected successfully via Bluetooth indicated by solid white LED light for 3 seconds.

Note :

- Pairing mode lasts for 5 minutes with the white LED flashing slowly. After 5 minutes, the white LED remains steady for 1 second and earbuds turn off automatically.
- If the pairing duration is missed, you will have to reconnect the earbuds and follow the steps again.
- Airdopes 155 remembers previously connected devices; once switched on, the earbuds automatically reconnect to the previously connected devices within the working range.



Step 1: Please note that both the earbuds can be used in Mono mode. Use Smart / Manual Power On option for switching on the desired earbud.

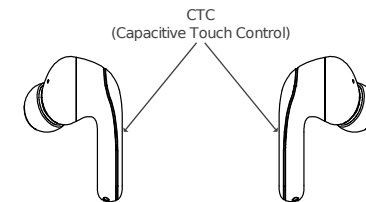
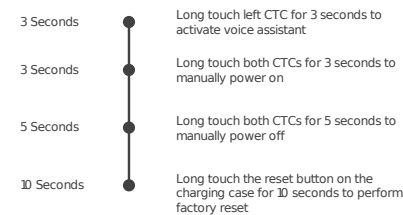
Step 2: The selected earbud automatically enters pairing mode. This is indicated by the white LED flashing slowly.

Step 3: Turn on Bluetooth on your phone/media device and start scanning.

Step 4: Select 'Airdopes 155' from the list of devices. The earbud is now connected via Bluetooth.

Notes:

- To switch to Stereo mode, simply take out the other earbud from the case. It will automatically power on and pair with the previously selected earbud, hence enabling Stereo usage.
- You cannot skip tracks or return to the previous tracks in Mono (single earbud) mode.



CHARGING THE EARBUDS:

Step: To charge the earbuds, please place them inside the charging case in the correct orientation and close the lid. White LED light on the case remains on for 5 seconds while charging the earbuds and turns off when the earbuds are fully charged.

Earbud Battery Level	LED Status
Less than 30%	White LED blinks 2 times when the lid is opened
30%-100%	White LED blinks 3 times when the lid is opened

- Note:
- When the earbud battery level drops below 20%, a 'Battery Low' prompt gets triggered every 5 minutes and the white LED quickly flashes 3 times every 30 seconds.
 - Before using the earbuds for the first time, it is recommended to fully charge them. Also, please keep the lid of the charging case closed while charging.
 - Please note that the earbuds cannot be switched on while charging.

CHARGING THE CASE:

Step: To charge the case, plug one end of the provided USB Type-C cable into the case and connect the other end to a computer, wall adapter, power bank, etc.

Case has low battery	White LED blinks 3 times rapidly
Case is on charging	White LED flashes slowly
Case gets fully charged	Solid white LED

BASIC FUNCTIONS

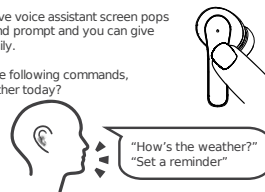
- Answer Calls: Plug both earbuds into your ears to answer incoming calls. OR Single tap the CTC on either earbud to answer incoming calls.
- Hang Up / Reject Call: Double tap the CTC on either earbud to end an ongoing call or reject an incoming call.
- Play/Pause Music: Simply plug in the earbuds inside your ears to start playback and remove them to pause music. OR Single tap the CTC on either earbud to play or pause a track.
- Next Track: When playing music, double tap the right earbud's CTC to skip to the next song.

VOICE ASSISTANT:

Step 1 Long touch the CTC on the left earbud for 3 seconds to activate the smart voice assistant.

Step 2: The respective voice assistant screen pops up along with a sound prompt and you can give your commands easily.

- Tips: You may try the following commands,
- What is the weather today?
 - Play a song
 - Set a reminder



Note: If the voice assistant is not triggered, then the functionality needs to be first enabled via your media device settings.

BEAST™ MODE

Tap the left earbud CTC 3 times to switch to Low Latency gaming mode, also known as the BEAST™ Mode. Once switched on, it is notified via a sound prompt. Tap the left earbud CTC again for 3 times, to turn it off and return to standard Music Mode.

Made for the Gamers - By Gamers, BEAST™ Mode reduces the latency significantly and improves the overall gaming experience.

ENX™ TECH

Our ENX™ (Environmental Noise Cancellation) tech algorithm cancels out the background noise so that you can hear crystal clear on voice calls. You don't have to switch on ENX™ separately as the 4x mics are already equipped with the same and activated by default.

Deliver your voice without interruptions wherever you are – traffic, railway stations, airports, workspace; literally everywhere!

POWER OFF

Step 1 After usage, remove both earbuds from your ears.

Step 2: Place the earbuds back into the charging case in the correct orientation and close the lid.

Step 3: White LED light flashes for 1 second followed by a voice prompt. The earbuds automatically switch off (Smart Power Off) and enter charging mode.

OR

Step 1: Long touch both CTCs for 5 seconds (one at a time) to manually power off the earbuds.

Step 2: White LED blinks for 1 second once the earbuds switch off.

Step 3: Place both the earbuds inside the case and close the lid.

FACTORY RESET

Perform the factory reset in case you face difficulties while operating your Airdopes.

*NOTE: Before performing the reset, please clear "Airdopes 155" from the pairing device history by forgetting the device and, ensure that the earbuds are placed inside the charging case.

Step 1 Open the lid of the charging case and place the earbuds within the case.

Step 2: Long touch the reset button on the charging case for 10 seconds. This is indicated by the LEDs on both the earbuds and the charging case rapidly flashing 5 times.

Step 3: Close the case lid and wait for 5 seconds.

Step 4: Take out the earbuds from the charging case and perform a fresh connection.

Congratulations! Your Airdopes 155 have been reset.

Charging norms & Precautionary Guidelines: -	
1) Charger/Brick/Adapter	: 5V 2A
2) Cable/Wire	: Standard Cable (35 strands @Ø.10mm diameter/ strand)
Any other accessory can be used to charge the product as long as the above-mentioned norms are followed.	

SPECIFICATIONS

Headphone Type	TWS
Bluetooth Version	v5.3
Music Playtime	Up to 40 hours (at 60% volume)
Standby Time	45 hours
Number of ENC Equipped Mics	4
IWP™ Tech	Yes
In-Ear smart detection	Yes for auto play/pause music
BEAST™ Mode	Yes; 65 ms Low Latency
Transmission Range	10 m
Driver Size	10 mm²
Supported Codec	AAC/SBC
Frequency	20 Hz-20 kHz
Battery	400 mAh (Case); 35 mAh*2 (Earbuds)
ASAP™ Charge	Yes; 5 mins charge = 60 mins playtime
Charging Time	About 1 hour (Earbuds); Up to 2 hours (Case)
Charging Interface	USB Type-C
Water Resistance	IPX4

SAFETY CAUTION:

- Please follow the instructions to operate the earbuds smoothly.
- Please don't use the earbuds in extreme temperatures.
- Please don't use the product in water.
- Please keep the product away from heat sources, as the heat may damage it.
- Please don't jam the ports, such as the charger port, LED port, etc.
- It is recommended to utilize the product below the maximum volume to protect your hearing and extend the service life of the earbuds.

