

2.1 SOUNDBAR SPEAKER SYSTEM

Model No.: AAVANTE BAR 1400

Bluetooth Name: AAVANTE BAR 1400



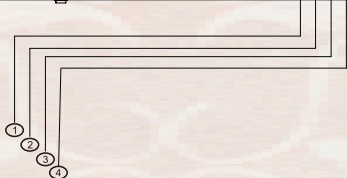
Discover a new level of immersive, cinematic audio experience at home with the boAt AAVANTE BAR 1400. With a powerful 120 W total output, a slim sound bar and versatile 2-way subwoofer brings every aspect of your entertainment be it a song, show or movie to life in the volume and clarity it deserves. Drivers at each end of your sound bar deliver a clear mid and high range, while a 60 W subwoofer fills in the rumbling lows. The 2.1 channel sound system provides a balanced sound and deep bass for your movies, music and even video games and you can experience cinematic sound that revolves around you. Stay plugged into the sound with an array of wired connections, and Bluetooth® wireless technology. Bring your home to life with the AAVANTE BAR 1400.



boat
plug into nirvana

Kartik Aaryan
Kartik Aaryan

Controls and connections

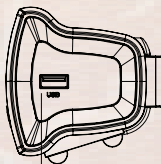


- 1.Standby
- 2.vol+
- 3.vol-
- 4.function



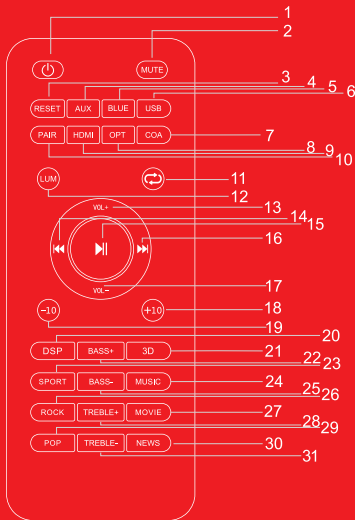
- 1
- 2
- 3
- 4
- 5
- 6

- 1.AUX
- 2.COAXIAL
- 3.OPTICAL
- 4.DC IN
- 5.SW OUT
- 6.HDMI(ARC)
- 7.USB



7

Remote Control - Control/ Functions



1. Standby – To switch on / off the standby mode
2. MUTE – To turn on / off the sound volume
3. RESET – To reset settings
4. AUX – For switching to AUX mode
5. BLUE – For switching to Bluetooth mode
6. USB – For switching to USB mode
7. COA – For switching to Coaxial mode
8. HDMI – For switching to HDMI (ARC) mode
9. OPT – For switching to Optical mode
10. PAIR – For disconnecting or reconnecting Bluetooth
11. Repeat – In USB playback mode, single press for a single loop and press again to repeat all tracks
12. LUM – To turn on / off the LED display
13. VOL+ - Volume Up
14. Previous – In USB playback mode, switch to previous track
15. Play – To play / pause
16. Next – In USB playback mode, switch to next track
17. VOL- - Volume down
18. +10 – In USB playback mode, to skip the following 10 tracks
19. -10 – In USB playback mode, to go before the previous 10 tracks
20. DSP – To switch on the DSP mode for enhancing vocal clarity.
21. 3D – 3D EQ
22. BASS+ - Increase bass effect
23. SPORT – Sports EQ
24. BASS- - Decrease bass effect
25. MUSIC – Music EQ
26. ROCK – Rock EQ
27. MOVIE – Movie EQ
28. TREBLE+ - Increase treble
29. POP – Pop EQ
30. TREBLE- - Decrease treble
31. NEWS – News EQ

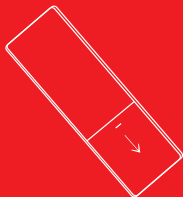
Setting Up the Soundbar

1. Plug in the power cord and the display lights up
2. Use the Power button on the soundbar control panel or the Standby button on remote controller to switch on the soundbar. The default input mode gets displayed
3. The input mode can be changed by pressing the Power button on the soundbar again or the input mode buttons viz. HDMI, OPT, BLUE, etc. on remote controller

Remote Control Battery Replacement

Please insert the batteries as indicated below

A: Remove the battery compartment cover



B: Insert 2 AAA batteries according to the markings inside compartment



C: Close the compartment.



Important Safety Instructions

Caution:

To reduce the risk of electric shock, do not dismantle the AAVANTE Bar 1400 and do not expose the apparatus to rain or moisture.



Important Safety Instructions

Caution:



If the light flashes within an equilateral triangle this is to alert you to the presence of uninsulated dangerous voltage within the product's enclosure that may be of sufficient magnitude to constitute an electric shock to a person or persons.



Important! This symbol alerts you to read and observe important warnings and instructions on the unit or in this manual.

Important Notes

- Before turning on the power for the first time, make sure the power adaptor is properly connected.
- This sound bar is specially developed for LED/LCD/Plasma TV's: It should not be used in combination with CRT TV's (Cathode Ray Tube TV's) in order to avoid image interferences.
- Do not attempt to remove any screws, or open the casing of the unit; there are no user serviceable parts inside. Refer all servicing to qualified service personnel.
- Operate the soundbar only as instructed in this manual and this instruction manual should be retained for future reference.
- If connected to a TV via Bluetooth there may be a sound lag between the TV and the device. To solve this, the best option is to connect the TV and Soundbar using an aux/ optical/ HDMI output.
- The Soundbar may not be compatible with all Bluetooth capable TV's. In this case, please use an aux/ optical/ HDMI output to connect the Tv and Soundbar to one another.

Please ensure that the boAt AAVANTE Bar 1400 is not exposed to the following:

- Dropping or splashing water or placed in a humid atmosphere such as a bathroom.
- places exposed to direct sunlight or close to radiators.
- On top of other stereo equipment that radiate too much heat.
- Blocking ventilation or in a dusty area.
- Areas where there is constant vibration.
- Humid or moist places.
- Do not place the sound bar near candles or other naked flames.

Safety Instructions

Power sources - This soundbar should be operated only from the type of power source indicated by the marking adjacent to the power cord entry.

Grounding - the soundbar is not required to be grounded. Ensure that the plug is fully inserted into the wall socket or extension cable to prevent pin exposure.

Power cord protection - Power-supply cords should be routed so that they are not likely to be walked on, kinked or pinched by items placed on or against them, paying particular attention to cords from plugs.

Overloading - Do not overload wall sockets, extension cables, as this can result in a risk of a fire or electric shock.

Ventilation - The soundbar must be properly ventilated. Do not place the soundbar on a bed, sofa, or other similar surface. Do not cover the soundbar with any items such as table clothes, newspapers, etc.

Heat -The soundbar should be situated away from heat sources such as radiators, stoves, or other devices, including amplifiers that produce heat. No naked flame sources, such as lighted candles, should be placed on the Sound bar or sub-woofer.

Water and moisture -To reduce the risk of fire or electric shock, do not expose the soundbar to rain, dripping, splashing or excessive moisture such as in a sauna or bathroom. Do not use this soundbar near water, for example, near a bathtub, washbowl, kitchen sink, laundry tub, wet basement or near a swimming pool (or similar).

Object and Liquid Entry - Never push objects of any kind into this soundbar through openings, as they may touch dangerous voltage points or short-circuit parts that could result in a fire or electric shock. Never spill liquid of any kind on the soundbar. Do not place any object containing liquid on top of the soundbar.

Accessories - Do not place this soundbar on an unstable stand, tripod, bracket or table. The soundbar may fall, causing serious injury to a child or adult, and serious damage to the soundbar.

Unused periods -The power cord of the soundbar should be unplugged from the mains during lightning storms or when the apparatus is left unused for a long period of time.

Safety Instructions (Cont.)

Servicing - Do not attempt to service this soundbar yourself, as opening or removing covers may expose you to dangerous voltage or other hazards and will void your warranty

Mains fuses - For continued protection against fire hazard, use fuses only of the correct type and rating. The correct fuse specification for each voltage range is marked on the soundbar.

Do not turn up the volume while listening to a section with very low level inputs or no audio signals. If you do, the speaker may be damaged when a peak level section is suddenly played.

Try to install the soundbar near a wall socket or extension cord to make sure that it is easily accessible.

The highest environmental temperature suitable for this soundbar is 35°C. If the soundbar maybe reset or not reset to operation of control due to electrostatic discharge, just switch off and reconnect again, or move the soundbar to another location away from the TV

Battery

- 1). The batteries must not be exposed to excessive heat such as sunshine, fire etc.
- 2). The batteries should be drawn to the environmental aspects of battery disposal.
- 3). **Battery usage** - to prevent battery leakage which may result in body injuries, property damage, or damage to the apparatus: Install all batteries correctly, + and - as marked on the apparatus. Do not mix batteries (old and new or carbon and alkaline, etc.) Remove batteries when the unit is not used for a long time.

Important Notes

- If connected to a TV via Bluetooth there may be a sound lag between the TV and the device. To solve this, the best option is to connect the TV and Soundbar using an aux/ optical/ HDMI output.
- The Soundbar may not be compatible with all Bluetooth capable TV's. In this case, please use an aux/ optical/ HDMI output to connect the Tv and Soundbar to one another.

Warning

This soundbar is not intended for use by persons (including children) with reduced physical sensory or epilepsy, or lack of experience and knowledge, unless they have been given supervision or instructions concerning use of by a person responsible for their safety.

1. To prevent possible hearing damage, do not listen at high volume levels for long periods of time or a sudden high volume level.
2. Switch off the device whenever you are not using it, even if this only for a short while.
3. The soundbar is not intended to be operated by means of an external timer or separate remote-control system.
4. Before operating this device, check the voltage of this system to see if it is identical to the voltage of your local power supply.
5. The unit should not be impeded by covering the ventilation opening with items such as newspaper, table-cloths, curtains etc. Make sure that there are at least 20 cm of space above and at least 5 cm of space on each side of the unit.
6. The soundbar must not be exposed to dripping or splashing and that objects filled with liquids, such as vases, must not be placed on the apparatus.
7. To prevent fire or shock hazard, do not expose this device to hot places, rain, moisture or dust.
8. Do not locate this device near any water sources e.g. taps, bathtubs, washing machines or swimming pools. Ensure that you place the unit on a dry, stable surface.
9. Do not place this device close to a strong magnetic field.
10. Do not place the device on an amplifier or receiver.
11. When removing the power plug from the wall socket, always pull directly on the plug, never pull on the cord.
12. Depending on the electromagnetic waves used by a television broadcast, if a TV is turned on near this unit while it is also on, lines might appear on the TV screen.
13. Neither this unit nor the TV is malfunctioning. If you see such lines, keep this unit well away from the TV set.

Trouble Shooting

No sound

- Check that the Sound bar system is not set to standby.
- Check that the correct source is selected.

No sound/low volume

(Computer or personal audio player connected to the AUX Port)

- If the source has a volume control, check that this is turned up.

Trouble Shooting

No sound (digital audio source)

- Check that the sample rate of the source is in the correct range for the sound bar system.

No remote control operation

- The batteries may be flat. Try replacing the batteries.

Care and cleaning

After using the sound bar system please set it in Standby Mode.

All care and cleaning operations should be carried out with the unit unplugged from the main power.

The surface of the unit can be cleaned with a barely damp cloth and then dried carefully.

Never use abrasives, abrasive cloths or chemical solvents.

Loudspeaker grilles can be cleaned carefully with a soft brush. If you wish to use an aerosol cleaning spray, do not spray directly on the cabinet; spray onto the cloth. Be careful not to damage the speakers.

Specifications

Model	boAt AAVANTE BAR 1400
Type	2.1 Channel Soundbar
Technology	USB, Optical, Coaxial, HDMI(ARC), AUX, Bluetooth v5.0
Drivers	2"×4 SB + 6.5inch SW
Output Power	30W×2+60W=120W R.M.S
Frequency Response	40Hz-18KHz
Signal-to-Noise Ratio	≥ 80dB
Impedance	4Ω×4+4Ω
Power Input	AC 110-240v ~ 50Hz/60Hz
Bluetooth	V5.0, Range: Up to 10m
Dimensions	Sound bar:70H×74D×916L mm Subwoofer: 190W×365H×312D mm

Playing in Different Modes

Optical Mode

1. Use an optical cable to connect the soundbar to the TV
2. Select the optical mode by pressing the OPT input mode button on the remote controller; once selected the LED displays OP as the input
3. Then, go to the settings on your TV menu and perform the necessary steps to establish connection via the optical mode

N.B. If you are using a smart TV app, please disable Dolby or DTS mode on the same as the soundbar doesn't support them.

HDMI (ARC) Mode

1. Use an HDMI (2.0) cable to connect the HDMI (ARC) port on the soundbar to the HDMI (ARC) port on the TV
2. Select the HDMI (ARC) mode by pressing the HDMI input mode button on the remote controller
3. On the TV, select the source as HDMI (ARC) and visit its settings menu (refer to the TV user manual for details)

Bluetooth Mode

1. Once the soundbar is in standby mode, select the Bluetooth input mode by pressing BLUE button on the remote controller
2. In your media device, search for 'Aavante Bar 1400' and select the same to establish pairing (if a password is required, enter '0000')
3. Once successfully connected, the display stops flashing

N.B.

- To connect the earlier paired devices again to the soundbar via Bluetooth mode, one has to only bring both of them in close proximity under the Bluetooth mode and they get automatically connected
- If there arises any issue while establishing pairing, please restart both the devices and try again

AUX Mode

1. Once the soundbar is turned on, switch to AUX input mode
2. Insert one end of the 3.5mm jack AUX connector into the soundbar's AUX port (and the other end to the media device) and start playing from the connected media device

USB Mode

1. Insert the USB drive into the USB port on the soundbar
2. The music via the USB mode starts playing automatically and one can control the same by the remote controller

COAXIAL Mode

1. Select coaxial mode by pressing input button on the sound bar or the COA button on the remote controller
2. Connect one end of the coaxial cable to the slot in the TV and the other end to the coaxial slot provided at the rear end of the sound bar

CONNECT WITH US ON



boAt-lifestyle.com



[Instagram.com/boat.nirvana](https://www.instagram.com/boat.nirvana)



[Facebook.com/boat.nirvana](https://www.facebook.com/boat.nirvana)



[Twitter.com/BoatNirvana](https://twitter.com/BoatNirvana)

boat
plug into nirvana

Hardik Pandya

Hardik Pandya