

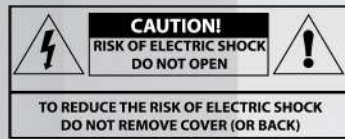
USER MANUAL

boAt

Thank you for choosing the boAt AAVANTE Bar 1180 as the audio source for your home. Discover a new level of immersive, cinematic audio experience at home with the boAt AAVANTE Bar 1180. A powerful 60 W total output that amplifies every aspect of your entertainment. The 2.0 channel sound system provides a balanced sound and deep bass for your movies, music and even video games and you can experience cinematic sound that revolves around you. Stay plugged into the sound with an array of wired connections, and Bluetooth™ wireless technology. Bring your home to life with the boAt AAVANTE Bar 1180. We request that this installation guide carefully for proper use of your purchase.



IMPORTANT SAFETY INSTRUCTIONS



TO REDUCE THE RISK OF ELECTRICAL SHOCK, DO NOT REMOVE THE AMPLIFIER PLATE. NO USER SERVICEABLE PARTS ARE INSIDE. WE RECOMMEND TAKING THE UNIT TO A QUALIFIED SERVICE TECHNICIAN FOR ANY REPAIRS.

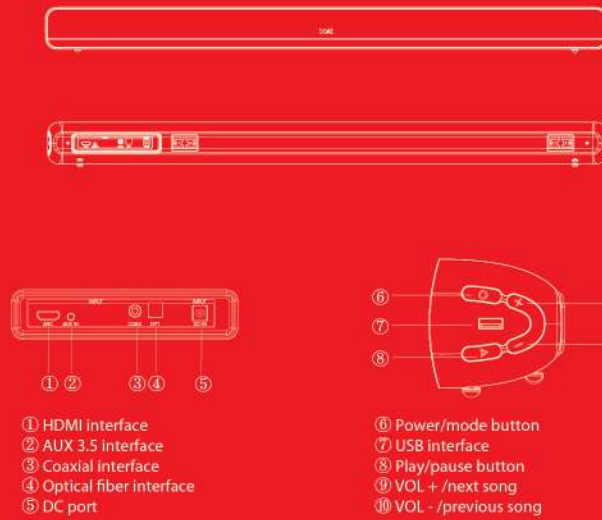
Includes:

- 1 x boAt AAVANTE 1180
- 1N Adapter
- 1N Aux Cable
- 1N User Manual
- 1N Warranty Card
- 2N Screws for wall mount
- 1N Catalogue

Safety Instructions

- This sound bar was especially developed for LED/LCD/Plasma televisions. It should not be used with CRT (Cathode Ray Tube) televisions in order to avoid image interference.
- Do not place this unit close to a strong magnetic field or the unit on an amplifier or receiver.
- Do not place the boAt AAVANTE Bar 1180 on any unstable surfaces. The speaker may topple over, causing serious damage either to persons, the unit or both.
- Do not take the SoundBar near water, such as bathtubs etc. ... and any areas that contain a high amount of moisture.
- Never use the device unsupervised! Switch off the device whenever you are not using it, even if only for a short while
- Please ensure that there is 20cm of space free above the Soundbar and 5 cm on either side.
- Likewise, please keep the SoundBar away from heat sources such as radiators, heat registers, stoves or other devices that produce heat.
- Ensure that the SoundBar is being inserted into a power supply outlet of the same voltage. There is also a risk of someone tripping over or pinching the wires once they have plugged in. Please make sure that the plug points are strategically placed as to avoid these circumstances.
- Clean the SoundBar with only a soft damp cloth and make sure to unplug the unit from the wall socket before starting.
- If any servicing of the unit is required, please do not disassemble the SoundBar yourself. All maintenance must be done ONLY a service provider or from a manufacturer. Doing so on your own will automatically make the warranty null and void.
- Do not replace any of the parts on your own, and do NOT use parts that are not factory authorized. It can result in fires, electrical shock or other hazards.

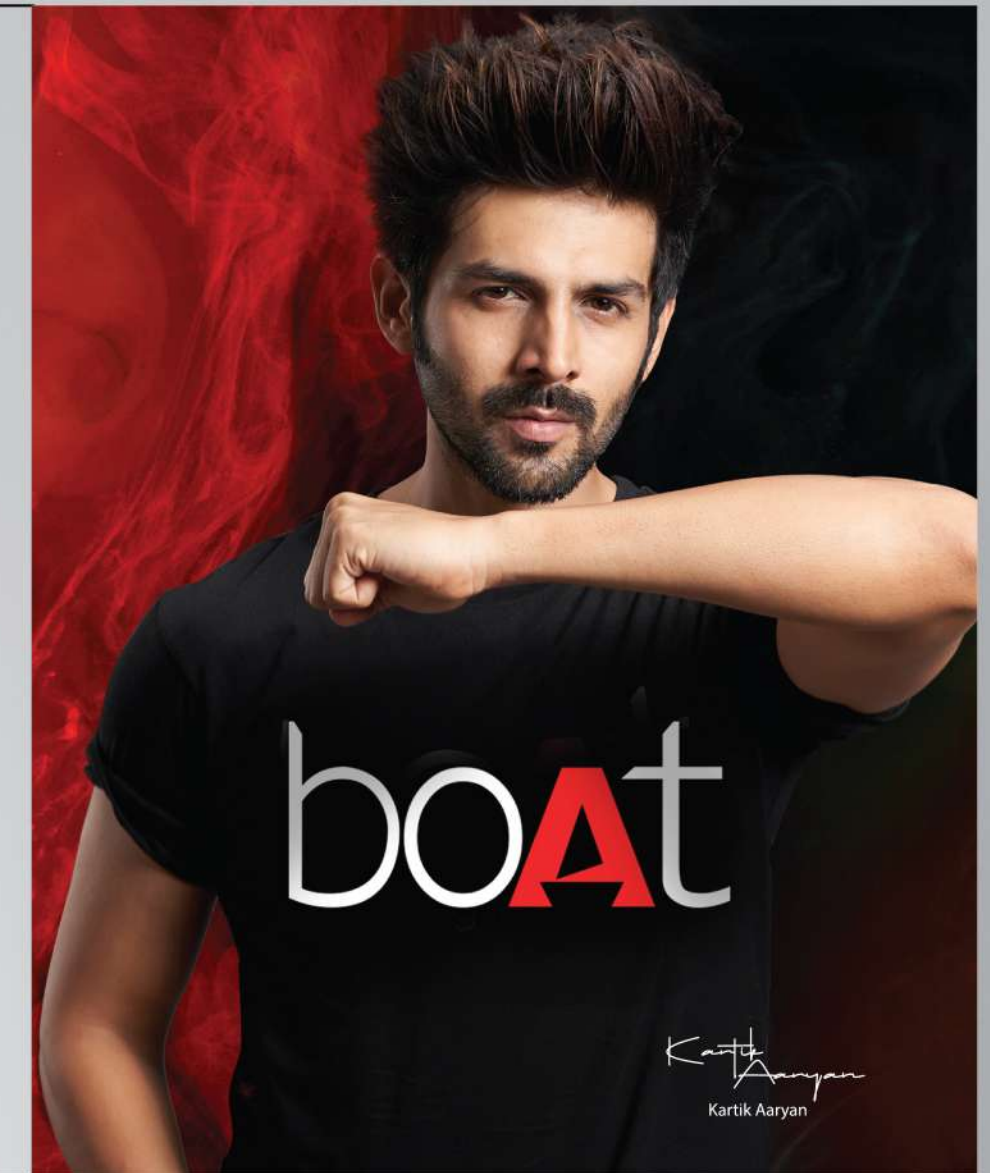
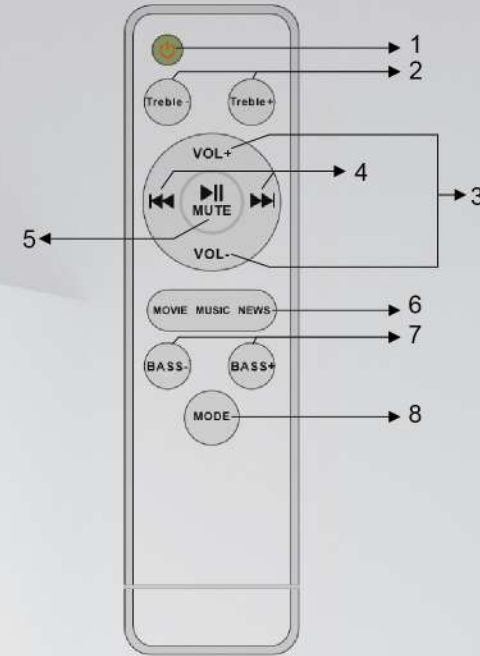
Soundbar Overview



- ① HDMI interface
- ② AUX 3.5 interface
- ③ Coaxial interface
- ④ Optical fiber interface
- ⑤ DC port
- ⑥ Power/mode button
- ⑦ USB interface
- ⑧ Play/pause button
- ⑨ VOL + /next song
- ⑩ VOL - /previous song

Remote Control Overview

1. Power Button: To power on/off the soundbar
2. Treble Controls: To adjust the treble levels
3. Volume: To adjust the volume levels
4. Track Change: To return to the previous song or skip to next on the playlist
5. Play/Pause/Mute
6. EQs – Movie, Music and News
7. Bass Controls: To adjust the bass levels
8. Mode Button: To switch audio input source, viz. Bluetooth, AUX, etc.



AAVANTE BAR 1180

Turn ON / OFF

Before powering on the device, connect the DC interface of the soundbar to AC power socket via the provided external adapter.

Powering ON / OFF the Soundbar: Long press the Power button for 2 seconds to power on or off the device.

Adjusting Volume

To adjust the volume, short press the Vol+ or Vol- button in steps.

Music Playback

• Single press the Play/Pause button to play or pause a track.

• Long press the '+' button to skip to next track; whereas to return to the previous track long press the '-' button.

Bluetooth Mode

1. Once the device gets powered on, switch the audio mode to Bluetooth by short pressing the Mode button on the remote control.

2. Turn on the Bluetooth functionality on your media device and search for 'Aavante Bar 1180' from the list of available devices and select the same.

Congratulations! Your Aavante Bar has been paired with your media device via Bluetooth.

Note: You can long press the Play/Pause button on the control panel to disconnect or reconnect via Bluetooth mode.

USB Mode

• The device automatically switches to USB playback mode once you insert the USB flash drive into the USB interface on the soundbar

• In case it doesn't switch automatically to the USB mode, short press the Mode button and switch to USB mode

Please note:

1. Supported Files: MP3
2. File System Format of USB Flash Drive: FAT32 (system format other than FAT32 isn't supported)
3. USB Flash Drive Supports: Up to 32GB

AUX Mode

Connect the soundbar to your media device via the provided AUX cable. Short press the Mode button to switch to AUX mode for playback.

Coaxial Mode

Connect the soundbar to your media device via the Coaxial interface using a Coaxial cable. Short press the Mode button to switch to Coaxial mode for playback.

Optical Mode

Connect the soundbar to your media device via the Optical fibre interface using an Optical cable. Short press the Mode button to switch to Optical mode for playback.

HDMI (ARC)

Connect the soundbar to your media device via the HDMI interface using an HDMI cable. Short press the Mode button to switch to HDMI (ARC) mode for playback.

Specifications:

| | |
|-------------------------------|---|
| Model | boAt AAVANTE BAR 1180 |
| Technology | USB, Coaxial, HDMI(ARC), AUX, Bluetooth v5.0, Optical |
| Drivers | 2.25 inch x 4 |
| Output Power | 30Wx2 = 60W RMS |
| Frequency Response | 50Hz-20KHz |
| Signal-to-Noise Ratio | ≥ 90dB |
| Impedance | 40"2+40 |
| Power Input (Working Voltage) | AC 100V-240V |
| Bluetooth | V5.0; Range: Up to 10m |
| Dimensions | 960mm*73.7mm*72mm |

Troubleshooting:

| PROBLEM | SOLUTION |
|----------------------------------|--|
| No power | 1. Make sure the boAt AAVANTE Bar 1180 is plugged in and turned on |
| No Sound | 1. Make sure you've selected the proper source 2. Make sure the volume is set properly on the unit and at the correct playback mode- (Bluetooth Android device and AUX inputs) |
| Bluetooth pairing fails | 1. Check to see that both devices are turned on and that your Bluetooth device is discoverable 2. Turn both devices off and on again 3. Make sure you've selected the proper output mode 4. Make sure that you are within 5 feet of the unit 5. Move both devices away from other Bluetooth devices, microwaves, wireless routers, and other electronics 6. Make sure that the unit is not paired to a previously paired device |
| No sound when receiving TV Input | 1. Make sure that all connections are secure 2. Make sure the volume is set properly on the unit and at the television |