

EXPLORER

Kids Desk

Materials

Top: Laminated MDF
Legs: Powder coated steel

Care instructions

Wipe down with a wet cloth and a mild soapy solution then wipe dry with a clean cloth.

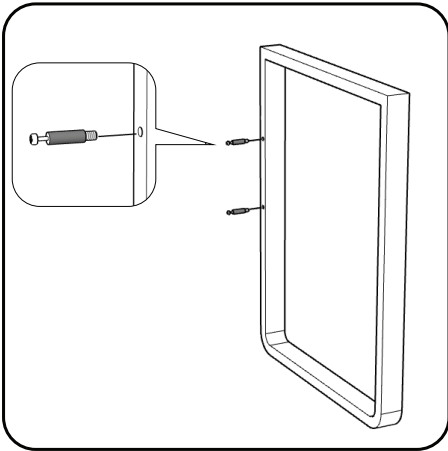


Illustration A

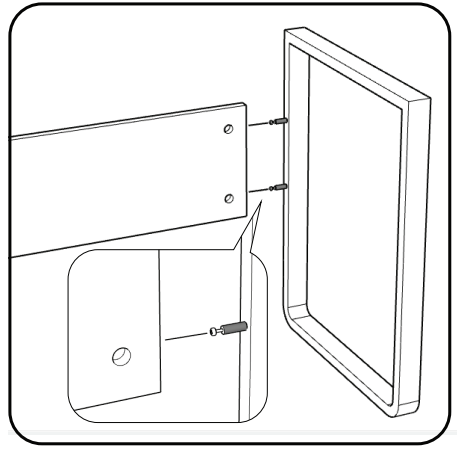


Illustration B

Attaching support brace to legs

Locate the pre-drilled holes on the side of both the metal legs. Using a screwdriver (not included), screw the four cam screws into the legs (Illustration A), making sure that they are perfectly straight when fully tightened.

With the cam screws on the legs fully tightened, push the screws into the holes on either side of the support brace (Illustration B). To make the installation easier, finish attaching one leg completely before you start on the other one.

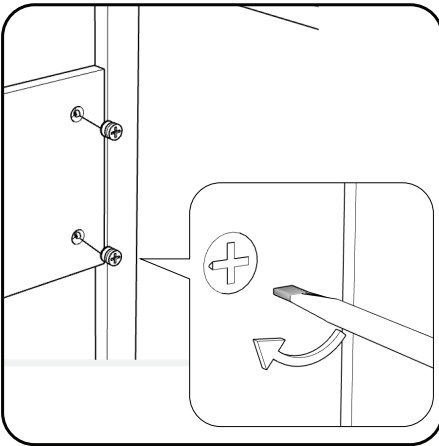


Illustration C

Insert the 4 round cam lock nuts into the holes on the support brace (Illustration C). Make sure that the small arrow on the nut is pointing towards the cam screw attached to the leg.

Once the cam nut is fully inserted into its corresponding hole, lock the nut by using a screwdriver to turn it 180 degrees. The small arrow on the nut should now be facing away from the cam screw.

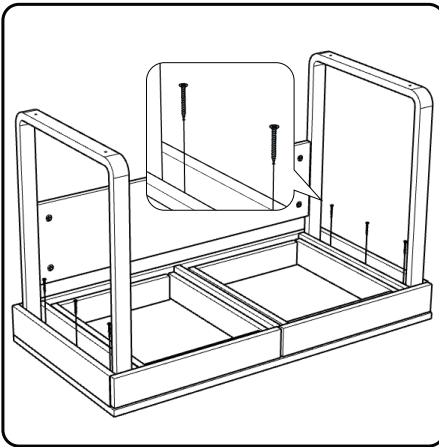


Illustration D

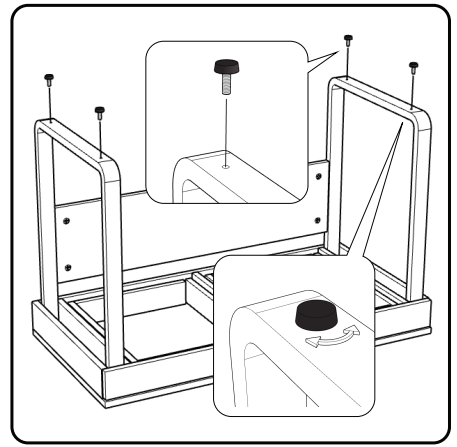


Illustration E

Attaching legs to top

Turn over the top and attach the legs (with the attached support brace) to the bottom of the top using the 6 included screws and a screwdriver (Illustration D). Make sure the legs are resting completely against the back of the top or else the drawers will not be able to shut.

Screw the included furniture glides into the holes on the bottom of the base. Adjust the height of the glides to level the table on the surface it will be used on (Illustration E).

If you have any questions or would like to give us feedback, feel free to email us at info@hex.furniture or call us on +92-315-4510439. We'd love to hear from you!