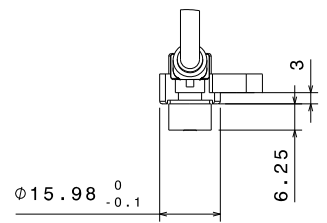
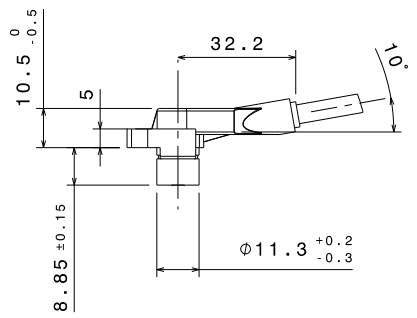
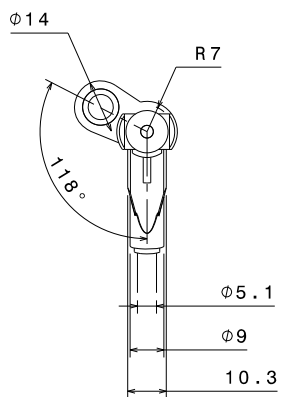
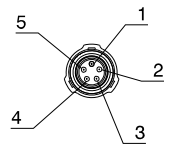


ISO Sys. of Limits a. Fits/ISO-Sys. Grenz. u. Pass.		ISO 286-2:1988-06	
Size/Größe	Tol. class/Größen	Limit dev./Grenzsch.	Upper/lower
General tolerances for Allgemeintoleranzen für			
lin. dim./Länge	radial/Radial	angles/Winkel	



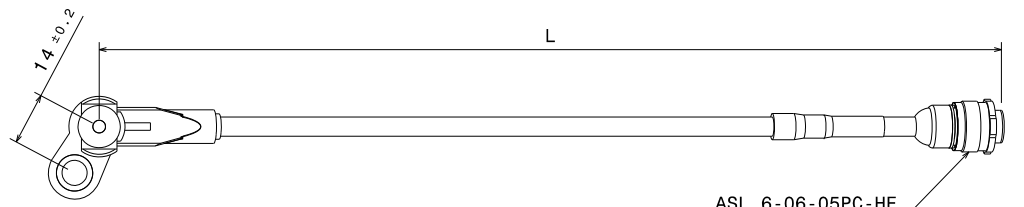
Ansicht A  
view



Pinbelegung/  
Pin assignment:

- Spannungsversorgung/  
Power supply Us1 (5...18V)
- Masse/GND
- Signal/Output
- Frei/free
- Frei/free

ASL 6-06-05PC-HE



ASL 6-06-05PC-HE  
Orange

**Verwendung als Drehzahlsensor**

**Einbauvorschriften:**

Erste Abstützstelle des Kabels max. 150mm (gestreckte Laenge) nach der Steckverbindung.  
Kabel darf erst 10mm nach Austritt aus Kunststoff gebogen werden.

**Einbauempfehlung:**

Maximal zulaessiges Anziehdrehmoment: 8±1Nm

**Application as speed sensor**

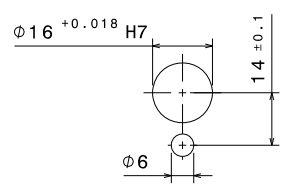
**Installation requirements:**

First cable mounting point max. 150mm (straight cable length) after the plug.  
Bending of the cable is only allowed after 10mm cable length from sensor head.

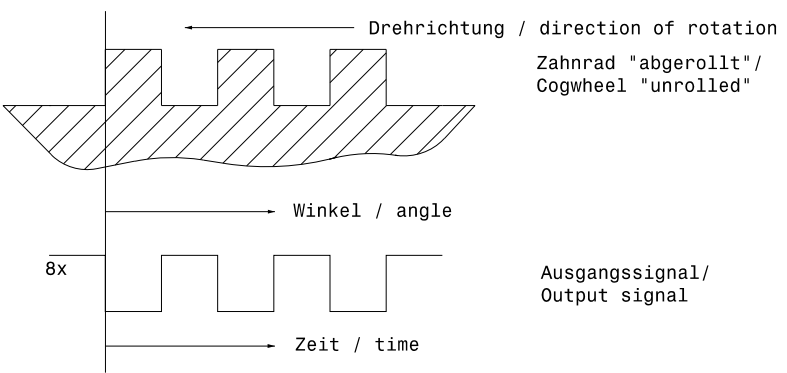
**Recommended installation:**

Max. allowed torque: 8±1Nm

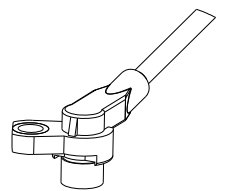
**Einbauvorschrift**  
Mounting requirement



**Signal-Definition**  
Signal definition



**Isometrische Ansicht/  
Isometric view**  
M 1:1



01 Erstanlage	20080827	ShN			TOGE/BEG/MSD1		
Ind. Change/Änderung	YYYYMMDD	Drawn/Gez.	Checked/Gepr.	Released./Freig.	EW/N	Resp. dept./Verante. Abt.	Add. info./Zus. Info.
Lang./Spr.	Syst.	Wght./Gew.			Mini HA-P	Drehzahlsensor	Sheet/Bl.
en/de	CAT	Scale/Verst.			Mini HA-P	Speed sensor	1/1
MNR	Scale/Verst.	1:1	OFFER DRAWING		Doc. Type	DRW F 02U V00 564-01	DP/TO
			ANGEBOTSZEICHN.		Repl. for		Format
					Repl. by		A2

F02U V00 564-01 CE	max. 270±5	ASL 6-06-05PC-HE
Bestell-Nr./ order no.	Laenge L/ length [mm]	Stecker/ connector

© Robert Bosch GmbH. All rights reserved. Also respecting the different application, reproduction, editing, distribution, as well as in the event of applications for industrial property rights.