

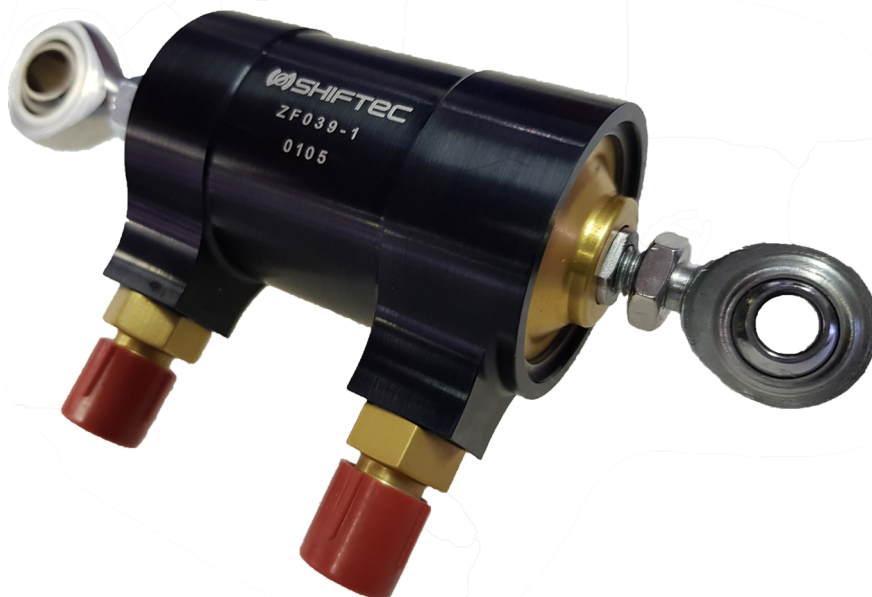


## ACTUATOR 34

The Shiftec low friction 34 series actuator is designed to provide powerful and reliable actuation of sequential gearbox-selector levers.

CNC machined from aluminium billet and protectively anodised, combined with a hardened chrome shaft, results in high durability and performance in a wide range of conditions.

## ROAD RACE



### KEY POINTS

- Compact Design
- Powerful Action
- Adjustable Rod Ends
- Available with M8 and 1/4" Mounting Ends
- Dash 4 JIC Air Feed Fittings
- Proven Durability In 24hr Races and Series' Alike
- Billet machined aluminium body

### PRODUCT ORDERING INFORMATION

DESCRIPTION	PART NO
Actuator 34	ZF039-1



### DIMENSIONS

Weight	235g
Width	40mm
Height	70mm
Length	144mm

### TECHNICAL DATA

Maximum Operating Pressure	10 Bar
Stroke	+/- 17mm
Air Inlet Fitting	Dash 4 JIC
Air Outlet Fitting	Dash 4 JIC

### INSTALLATION NOTES

- Install away from direct heat sources
- Do not strain or side load actuator
- Allow free and easy movement
- Use only aluminium or stainless steel hose fittings
- Actuator should be at 90° to actuator clevis at rest
- Ensure rest position is at mid point of stroke
- Up shift is normally rod extending from actuator, down is retraction
- Keep rod clean of dirt and debris
- A self centering device is available to help return stiff gear levers
- Service interval of 30hrs or 6000km

### SYSTEM REQUIREMENTS

Air Supply	<10 bar
Ambient Working Temperature	-25C to 125C

## DESCRIPTION

Two adjustable rod ends offer flexible mounting, for secure and simple installation. Can either be mounted to the gear change stick within the drivers bay of the car or directly to the gear selector lever within the engine bay.

The unit is designed to work with our ZD202 and ZD203 valve blocks, creating a reliable and powerful action.

