

Metal Utility Garden Cart

with Removable Rubber Mat



English Owner's Manual

- Important Safety Information
- Assembly Instructions
- Parts and Hardware Identification

Model: CA-GEMC

CAUTION: Read, understand, and follow ALL instructions and notices in this booklet before using this product.



Questions? Comments? Missing parts? Do not return to store.
Give us a call 1-866-446-2063, or email support@raypadula.com

SAFETY INFORMATION and WARNINGS

Please read, understand and follow ALL instructions and warnings in this user manual before using this product.

- Do NOT tow this cart on steep hills.
 - Do NOT tow this cart faster than 2 mph.
 - While towing, make slow turns to avoid damage to the cart and its contents.
 - Do NOT exceed 30 PSI when inflating the tire(s) as damage to the tire(s) and/or personal injury could result.
 - Do NOT load this cart with more than 500 lbs (225 kgs) of contents.
 - Do NOT allow any children to use, play on, or around this cart. This is not a toy.
 - This cart is NOT to be used for transporting passengers, or animals.
- This cart is NOT to be used for highway use.
 - Always distribute the load evenly over the surface of the cart bed.
 - If any part of this cart becomes damaged, broken, or misplaced, do NOT use the cart until a replacement part has been obtained and replaced.
 - Do NOT operate this cart on surfaces or roll over objects that could cause damage to the pneumatic tires or tubes.
 - Use only a hand-held air pump to inflate the tires.
 - Save these instructions for future reference.

PREPARATION

Before beginning assembly of this product, make sure all parts are present. Compare parts with package contents listed on page 3. If any part is missing or damaged, do not attempt to assemble this product. Contact customer service for replacement parts.

Estimated assembly time: 10 minutes

TOOLS NEEDED

The following tools are needed for proper assembly: (not included).



Adjustable Wrench



1/2" Ratchet

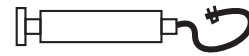


Pliers

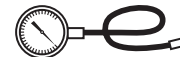


Phillips Screwdriver

Optional tools: (not included).



Handheld Air Pump



Tire Pressure Gauge

CARE AND MAINTENANCE

- Check for loose fasteners before use.
- At the beginning of each season, lubricate the pivot bolt and bearings with light machine oil.
- Grease the wheel bearings periodically, using general purpose grease.
- Check tire pressure regularly and inflate if needed. Do not over inflate.
- Cover or store out of weather when not in use.

PACKAGE CONTENTS

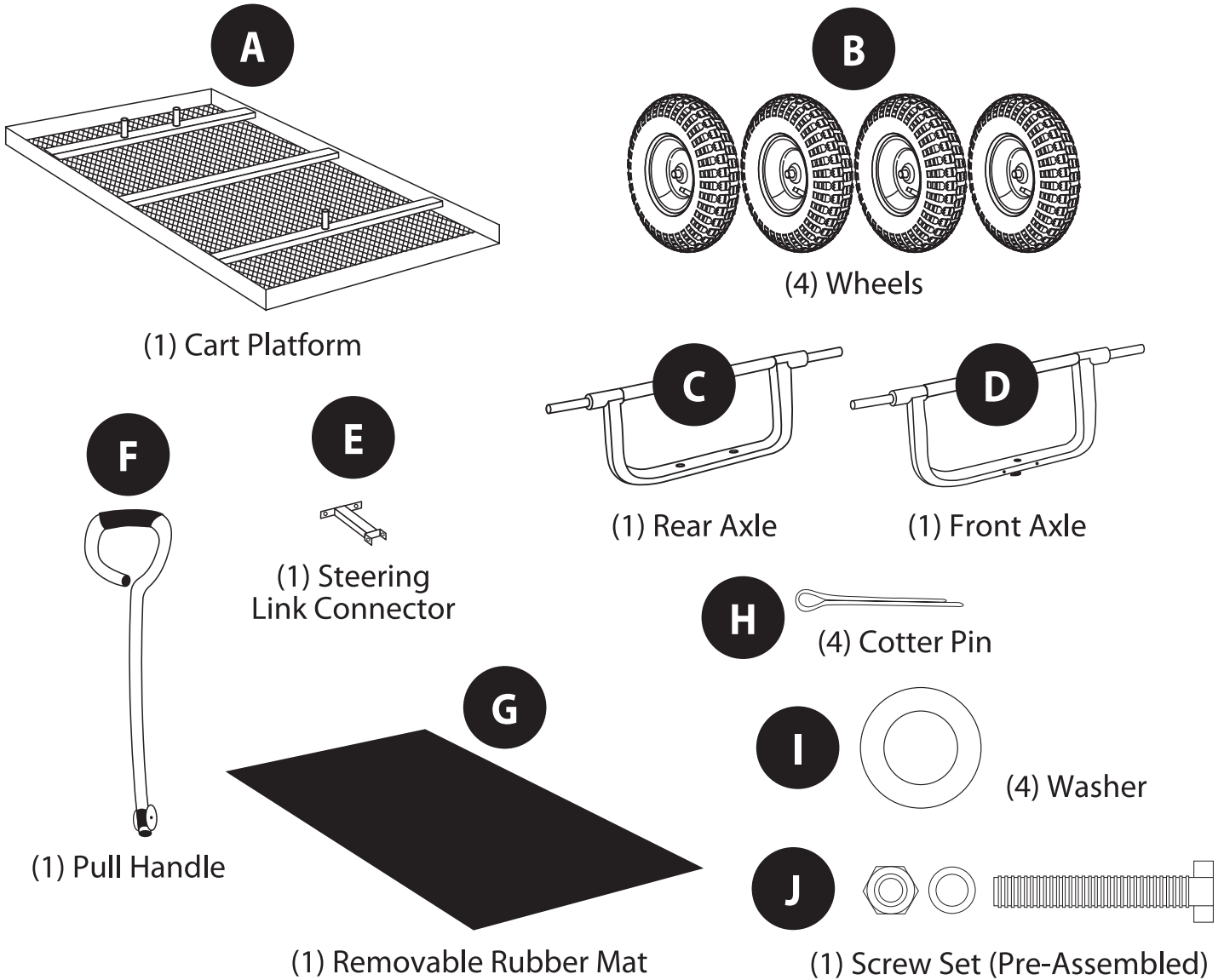


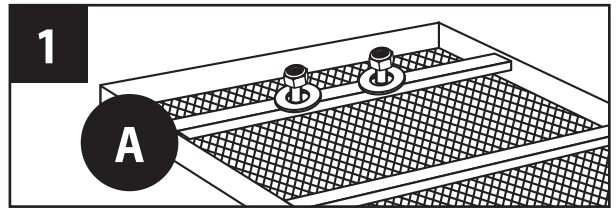
Diagram Letter	Description	Quantity
A	Cart Platform	1
B	Wheels	4
C	Rear Axle	1
D	Front Axle	1
E	Steering Link Connector	1

Diagram Letter	Description	Quantity
F	Pull Handle	1
G	Removable Rubber Mat	1
H	Cotter Pin	4
I	Washer	4
J	Screw Set (Pre-Assembled)	1

Line drawings are not actual size.

ASSEMBLY INSTRUCTIONS

1. Turn the CART PLATFORM (A) upside down. If necessary, use the cardboard from the product carton to prevent scratching and damage to the finish of the cart.

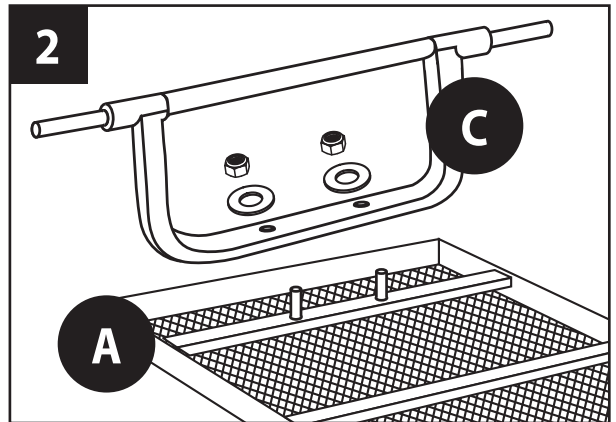


2. REAR AXLE ASSEMBLY

a). Remove the pre-attached nut and washer from the bottom of the cart platform. Align the two holes on the REAR AXLE (C) with the carriage support bolts which are welded on at the rear of the CART PLATFORM (A).

NOTE: The rear section of the cart has a total of 2 holes.

b). Attach the washer and nut to the end of each bolt. **NOTE: Once attached, tighten the connection using a wrench or ratchet (not included).**



3. FRONT AXLE ASSEMBLY

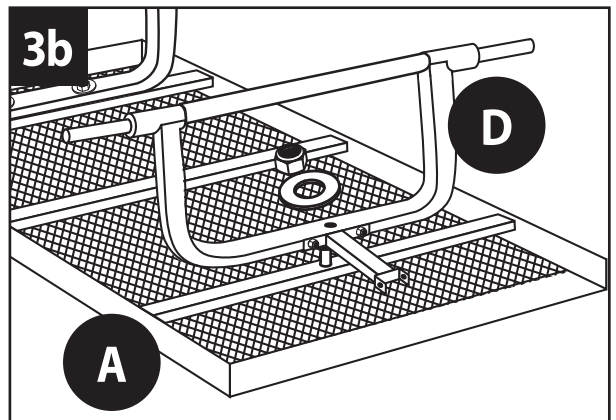
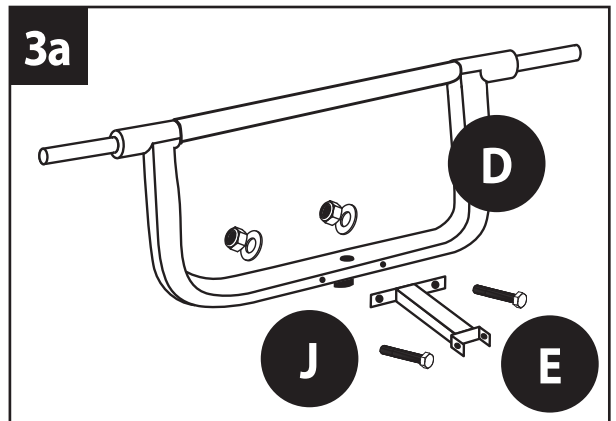
a). Remove the PRE-ASSEMBLED SCREW SET (J) nut, washer and screw from the bag of parts. Align the two holes on the STEERING LINK CONNECTOR (E) with two holes on the side of the FRONT AXLE (D).

NOTE: The Steering link connector will face the front of the cart.

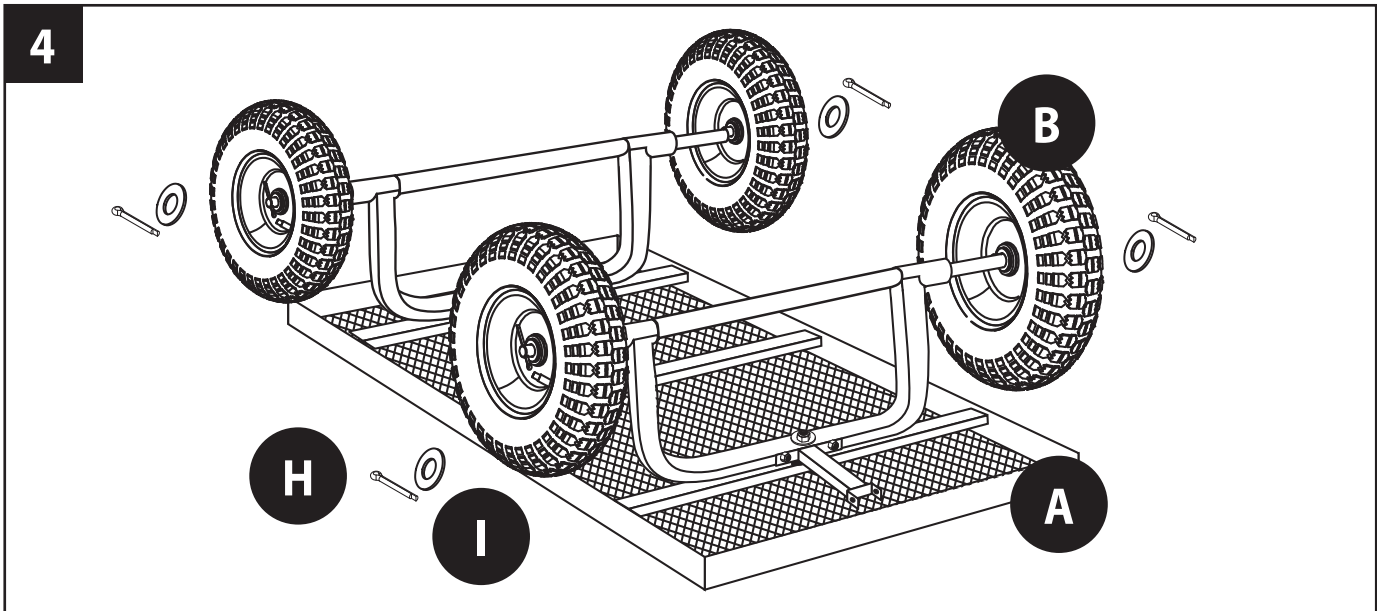
b). Remove the pre-attached nut and washer from the bottom of the cart platform. Align the center hole on the assembled FRONT AXLE (D) with the carriage support bolt that is welded on at the front of the CART PLATFORM (A).

NOTE: The front section of the cart has 1 center hole.

c). Attach the washer and nut to the end of the bolt. **NOTE: Once attached, tighten the connection using a wrench or ratchet (not included).**



ASSEMBLY INSTRUCTIONS - continued



4. WHEEL ASSEMBLY

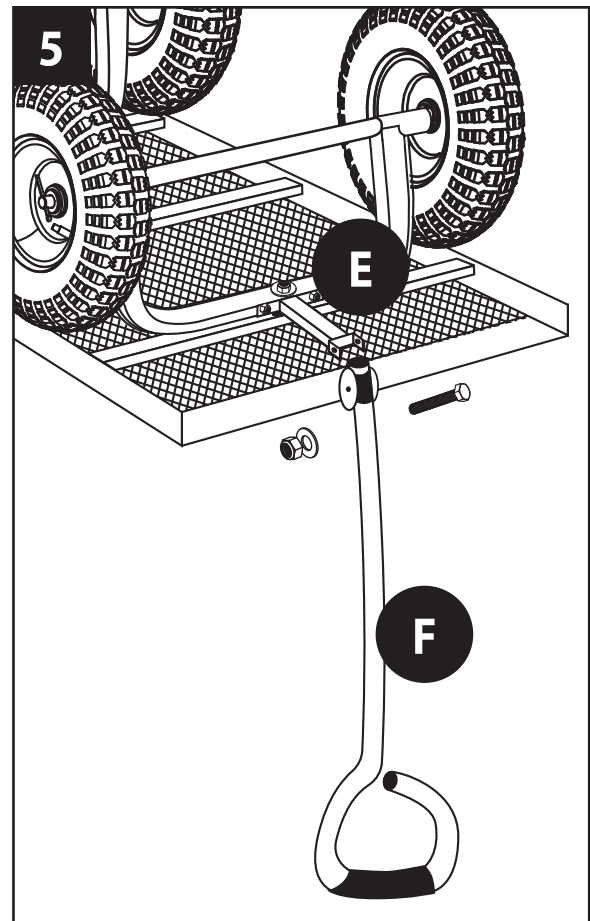
- Remove the COTTER PINS (H) and the WASHERS (I) from the bag of parts.
- Place the WHEELS (B) onto the ends of the FRONT AXLE (D) and REAR AXLE (C)
- Attach the WASHER (I) and COTTER PIN (H) to the end of each WHEEL (B). Bend Cotter Pins after placing through the hole to secure.

NOTE: Once attached, bend cotter pin around using a plier (not included).

5. HANDLE ASSEMBLY

- Remove the pre-attached nut, washer and screw from the PULL HANDLE (F).
- Align holes of the PULL HANDLE (F) and the end of the STEERING LINK CONNECTOR (E) so that the Pull Handle assembly including the plastic yoke (F) is inbetween the opening.
- Attach the hardware by placing the screw through all of the holes then the washer and finally the nut.

NOTE: Once attached, tighten the connection using a wrench and a philips screwdriver (not included).



ASSEMBLY INSTRUCTIONS - continued

6. FINAL ASSEMBLY

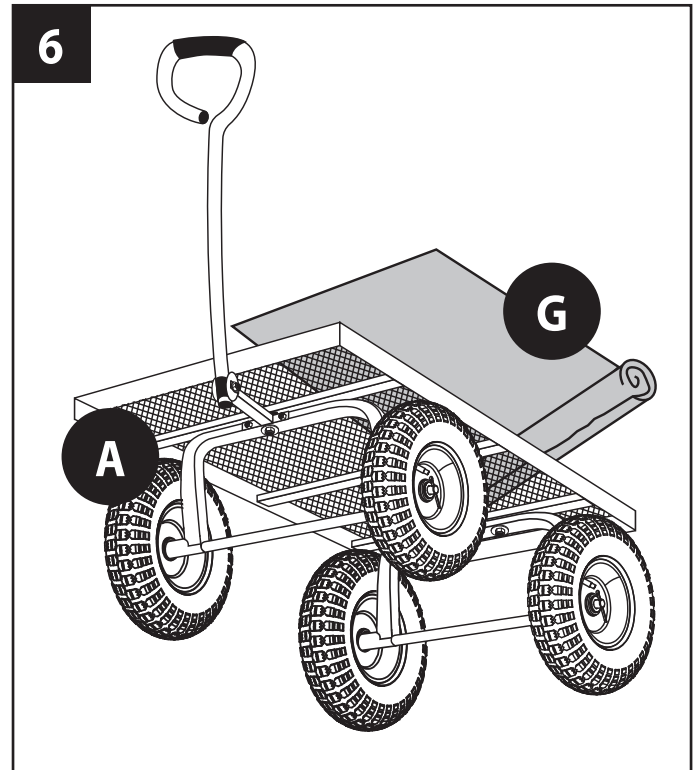
- a). After checking all Hardware is tightened turn fully assembled cart over.

6b. RUBBER MAT ASSEMBLY

- a). Place the REMOVABLE RUBBER MAT (**G**) onto the cart platform (**A**). This can be removed if not needed.

6c. TIRE INFLATION

- a). Before attempting to operate the cart, check the air pressure of each tire.
- b). If additional inflation is needed, use a hand-operated air pump, only.
- c). Do NOT exceed 30 PSI as damage to the tires and/or personal injury could result.



CARE AND MAINTENANCE

- Check for loose fasteners before use.
- At the beginning of each season lubricate the pivot bolt and bearings with light machine oil.
- Grease the wheel bearings periodically, using general purpose grease.
- Check tire pressure regularly and inflate if needed. Do not over inflate.
- Cover or store out of weather when not in use.