



JSP Beams Upper Waterneck

These brief instructions will help you with installing your new waterneck.

Start by removing the plastic engine cover and front upper timing cover. This might require removing part of the engine harness. Next remove the original waterneck. Clean the mounting surface on the head. Next install the new waterneck as follows:

Step 1.

Install the dust cover using the included m6 screw and spacer. **USE LOCKTITE** on the screw to make sure it does not back out. The spacer mounts on the backside of the cover, outside the timing area. See picture for reference.

Step 2.

Mount the Riser block to the head using the two included m10 socket screws. Make sure to use a factory gasket between the block and head, use Toyota bond if needed.

Step 3.

Attach the water neck to the riser block using the included m8 screws. Make sure to install the included O-ring onto the back side of the waterneck before mounting.

Step 4.

Cut the steel bypass tube on the engine at the line shown in the picture. Deburr the edge of the tube to make sure it does not damage the hose during installation. To ensure a proper fit, it may be necessary to bend this tube slightly towards the engine to align with the hose fitting on the new waterneck. To prevent damage, insert a 3/8" drive extension and apply moderate pressure to bend it. The extension will ensure the tube does not deform in shape while bending.

Step 5.

Install the included 90 degree fitting and reuse the existing bypass hose. It helps to lubricate the O-ring on the fitting with petroleum or other similar lubricant to prevent damage. The OEM bypass hose will need to be trimmed shorter to fit.

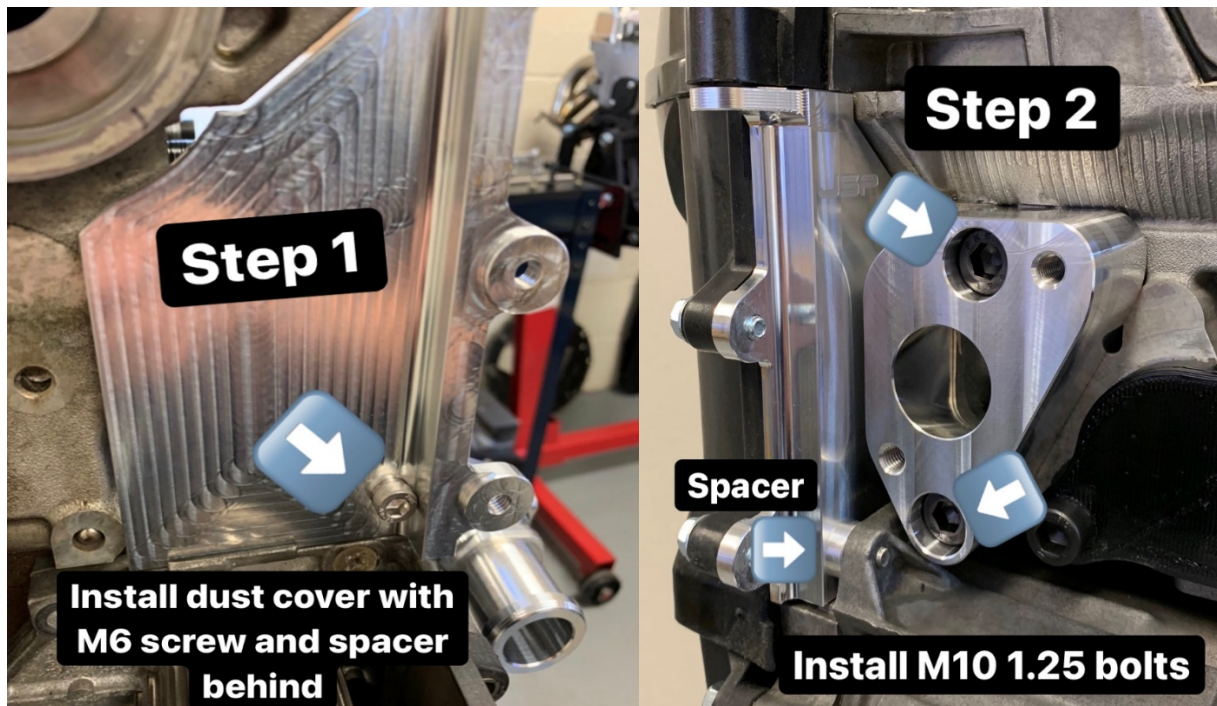
Step 6.

Install OEM temp sensor into housing along with the included 1/8 npt plug.

Reinstall the plastic covers and anything else removed. Be sure to inspect for leaks after filling with coolant.

NOTE: I've included pictures of the radiator hose I have found to work best when using the Beams Koyo radiator in an AE86 or similar chassis. It needs to be cut at both ends to fit, but the shape of the bends fits nicely.

. Please refer to the pictures below for reference. Feel free to reach out to us with any questions during your install. You can email John@JSPfab.com.





Step 3

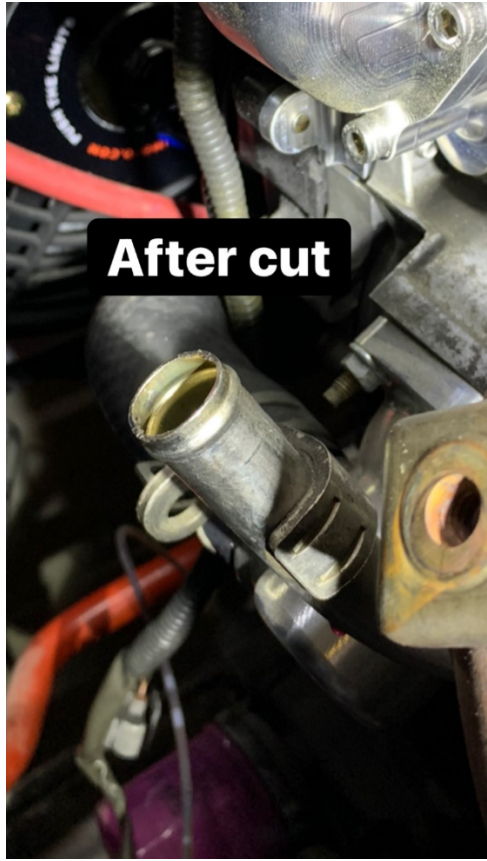
Install neck using 2 M8 screws



Step 4

Cut here

Trim bypass hose



After cut



Step 5

Install fitting and attach shortened hose

Part Numbers:

E72150

62520

L

20318626

