



**CONSUMER/LIGHT  
COMMERCIAL  
FREEWEIGHTS**

BROCHURE

**HOIST**<sup>®</sup>  
FITNESS



## FREWEIGHT PRODUCTS

HOIST® Fitness has become a leader in the strength training equipment industry through proven effectiveness, durability and versatility. Designed upon these principles, all HOIST Fitness freeweight products are precision built with superb components and unique space saving designs.

Our home products can be found around the world in consumers' homes and multifamily gyms. Numerous celebrities & world leaders' estates boast having HOIST Fitness Systems in them. Home products can be purchased through specialty fitness retailers throughout the world as well as online at: [hoistfitness.com](http://hoistfitness.com).

# FOLDING MULTI-POSITION WORKOUT BENCH

## HF-4145



## SPECS

### PRODUCT DIMENSIONS (L X W X H)

50 - 53" X 17" X 8 - 41"  
(127 cm - 133 cm X 44 cm X 20 cm - 104 cm)

### PRODUCT WEIGHT

53 lbs (24 kg)

### MAX EXERCISE WEIGHT

53 lbs (24 kg)

### MAX STORAGE CAPACITY

500 lbs (227 kg)

## FEATURES

- ◆ 5 adjustable back pad positions from -15° to 65° in 20° increments to accommodate incline and decline bench exercises
- ◆ Integrated hand grip and wheels provide tilt 'n roll capability for easy storage
- ◆ Foot pegs provide leg support during exercise
- ◆ Folds flat for easy storage
- ◆ No assembly required

# ADJUSTABLE AB/BACK HYPER BENCH

## HF-4263



## SPECS

### PRODUCT DIMENSIONS (L X W X H)

39 - 46" X 18" X 12 - 34"  
(98 cm - 116 cm X 44 cm X 30 cm - 86 cm)

### PRODUCT WEIGHT

53 lbs (24 kg)

## FEATURES

- ◆ 11 adjustable angle positions from 25° to 60° in 3.25° increments to accommodate ab and back exercises
- ◆ Self-aligning leg roller pads
- ◆ Integrated wheels provide tilt 'n roll capability for mobility
- ◆ Folds flat for easy storage

## LEG PRESS / HACK COMBO

*HF-4357*



### SPECS

**PRODUCT DIMENSIONS (L X W X H)**

83" X 31" X 57" (212 cm X 77 cm X 57 cm)

**PRODUCT WEIGHT**

488 lbs (221 kg)

**MAX EXERCISE WEIGHT**

720 lbs (327 kg)

### FEATURES

- ◆ Dual purpose back pad attaches for both exercises
- ◆ Adjustable platform provides proper positioning
- ◆ Multi-position lockouts for both exercises
- ◆ Designed for Olympic weight plates only

## PREACHER CURL

*HF-4550*



### SPECS

**PRODUCT DIMENSIONS (L X W X H)**

43" X 31" X 35" (108 cm X 79 cm X 88 cm)

**PRODUCT WEIGHT**

71 lbs (32 kg)

### FEATURES

- ◆ 60° pad angle increases resistance while decreasing elbow strain
- ◆ 8 adjustable ratcheting seat positions
- ◆ Two adjustable bar rack-out positions
- ◆ Non-skid surface assures secure foot placement

## FLAT BENCH

*HF-5163*



### SPECS

**PRODUCT DIMENSIONS (L X W X H)**

49" X 23" X 16" (123 cm X 57 cm X 40 cm)

**PRODUCT WEIGHT**

31 lbs (14 kg)

**MAX EXERCISE WEIGHT**

600 lbs (272 kg)

### FEATURES

- ◆ Rugged, lightweight design
- ◆ Non-metallic foot covers to protect flooring

## 7-POSITION F.I.D BENCH

**HF-5165**



### SPECS

**PRODUCT DIMENSIONS (L X W X H)**

66" X 25" X 47" (166 cm X 64 cm X 119 cm)

**PRODUCT WEIGHT**

77 lbs (35 kg)

**MAX EXERCISE WEIGHT**

1,000 lbs (454 kg)

### FEATURES

- ◆ 7 adjustable back pad positions from -20° to 80° to accommodate incline, flat, and decline bench exercises
- ◆ 3 adjustable seat positions from 0° to 20° in 10° increments to accommodate varying user heights
- ◆ Integrated hand grip and wheels provide tilt 'n roll capability for easy storage
- ◆ Adjustable foot pegs provide leg support during exercise
- ◆ Thermoplastic Polyurethane covers for back pad adjusters to reduce wear



# 7-POSITION FOLDING F.I.D BENCH

## HF-5167



FOLDS FOR EASY  
TRANSPORT & STORAGE



7 ANGLE POSITIONS



## SPECS

### PRODUCT DIMENSIONS (L X W X H)

21 - 55" X 23" X 21 - 38"  
(53 cm - 138 cm X 64 cm X 53 cm - 95 cm)

### PRODUCT WEIGHT

77 lbs (35 kg)

### MAX EXERCISE WEIGHT

1,000 lbs (454 kg)

## FEATURES

- ◆ 7 adjustable angle positions from  $-15^{\circ}$  to  $75^{\circ}$  to accommodate incline, flat and decline bench exercises
- ◆ Folds up to a compact position for easy transport or storage and locks into position for safety
- ◆ Integrated wheels allow for easy tilt 'n roll movability
- ◆ Back pad includes a rolled edge to lean against for partial core support
- ◆ Non-metallic foot covers to protect flooring
- ◆ Upgraded modern frame with oval tubing

## 7-POSITION F.I.D OLYMPIC BENCH

**HF-5170**



### SPECS

**PRODUCT DIMENSIONS (L X W X H)**

80" X 51" X 70" (204 cm X 129 cm X 178 cm)

**PRODUCT WEIGHT**

147 lbs (67 kg)

**MAX EXERCISE WEIGHT**

600 lbs (272 kg)

### FEATURES

- ◆ 7 adjustable angle positions from -10° to 75° to accommodate incline, flat and decline bench or shoulder exercises
- ◆ Sturdy, stationary frame design
- ◆ Upgraded racks with polyurethane covers to eliminate noise and protect the bar and machine
- ◆ Upgraded rack-out tiers with polyurethane covers to eliminate noise and protect the bar and machine
- ◆ Upgraded modern frame with oval tubing
- ◆ Non-metallic foot covers to protect flooring

# ADJUSTABLE AB BENCH

**HF-5264**



## SPECS

**PRODUCT DIMENSIONS (L X W X H)**

58" X 28" X 54" (146 cm X 71 cm X 136 cm)

**PRODUCT WEIGHT**

59 lbs (27 kg)

## FEATURES

- ◆ 10 adjustable angle positions from -5° to 40° in 5° increments to accommodate ab exercises
- ◆ Self-aligning leg roller pads
- ◆ Integrated wheels provide tilt 'n roll capability for mobility

# OLYMPIC WEIGHT TREE

**HF-5444**



## SPECS

**PRODUCT DIMENSIONS (L X W X H)**

25" X 21" X 44" (62 cm X 52 cm X 113 cm)

**PRODUCT WEIGHT**

33 lbs (15 kg)

**MAX STORAGE WEIGHT**

680 lbs (308 kg)

## FEATURES

- ◆ Convenient storage system designed for Olympic weight plates only
- ◆ Space saving vertical design
- ◆ 1.5" weight horns
- ◆ Durable, high-impact polypropolene weight horn sleeves
- ◆ Upgraded modern frame with oval tubing
- ◆ Non-metallic foot covers to protect flooring

## 5 PAIR VERTICAL DUMBBELL RACK

**HF-5459**



### SPECS

**PRODUCT DIMENSIONS (L X W X H)**

19" X 17" X 44" (49 cm X 44 cm X 111 cm)

**PRODUCT WEIGHT**

44 lbs (20 kg)

**MAX STORAGE WEIGHT**

400 lbs (181 kg)

### FEATURES

- ◆ Holds five pairs of dumbbells
- ◆ Space efficient vertical design
- ◆ Polypropylene covered rack outs to reduce noise and protect weights
- ◆ Upgraded modern frame with oval tubing
- ◆ Non-metallic foot covers to protect flooring

# 8 PAIR VERTICAL DUMBBELL RACK

**HF-5460**



## SPECS

**PRODUCT DIMENSIONS (L X W X H)**

19" X 17" X 52" (49 cm X 44 cm X 131 cm)

**PRODUCT WEIGHT**

51 lbs (23 kg)

**MAX STORAGE WEIGHT**

520 lbs (236 kg)

## FEATURES

- ◆ Holds eight pairs of dumbbells
- ◆ Space efficient vertical design
- ◆ Polypropylene covered rack outs to reduce noise and protect weights
- ◆ Upgraded modern frame with oval tubing
- ◆ Non-metallic foot covers to protect flooring

# 36" HORIZONTAL DUMBBELL RACK (2-TIER)

**HF-5461-36**



OPTIONAL 3RD TIER



## SPECS

**PRODUCT DIMENSIONS (L X W X H)**

43" X 25" X 36" (109 cm X 62 cm X 91 cm)

**PRODUCT WEIGHT**

84 lbs (38 kg)

**MAX STORAGE WEIGHT**

600 lbs / tier

## FEATURES

- ◆ Non-skid surface on tiers
- ◆ 2-Tier horizontal rack
- ◆ Holds Hex dumbbell pairs
- ◆ Upgraded modern frame with oval tubing
- ◆ Non-metallic foot covers to protect flooring

# 48" HORIZONTAL DUMBBELL RACK (2-TIER)

**HF-5461-48**



**OPTIONAL 3RD TIER**



## SPECS

**PRODUCT DIMENSIONS (L X W X H)**

55" X 25" X 36" (140 cm X 62 cm X 91 cm)

**PRODUCT WEIGHT**

99 lbs (45 kg)

**MAX STORAGE WEIGHT**

600 lbs / tier

## FEATURES

- ◆ Non-skid surface on tiers
- ◆ 2-Tier horizontal rack
- ◆ Holds Hex dumbbell pairs
- ◆ Upgraded modern frame with oval tubing
- ◆ Non-metallic foot covers to protect flooring



# 60" HORIZONTAL DUMBBELL RACK (2-TIER)

**HF-5461-60**



**OPTIONAL 3RD TIER**



## SPECS

**PRODUCT DIMENSIONS (L X W X H)**

67" X 25" X 36" (170 cm X 62 cm X 91 cm)

**PRODUCT WEIGHT**

115 lbs (52 kg)

**MAX STORAGE WEIGHT**

600 lbs / tier

## FEATURES

- ◆ Non-skid surface on tiers
- ◆ 2-Tier horizontal rack
- ◆ Holds Hex dumbbell pairs
- ◆ Upgraded modern frame with oval tubing
- ◆ Non-metallic foot covers to protect flooring

## AB / BACK ROMAN HYPER

**HF-5664**



### SPECS

**PRODUCT DIMENSIONS (L X W X H)**

53" X 32" X 40" (133 cm X 80 cm X 100 cm)

**PRODUCT WEIGHT**

77 lbs (35 kg)

### FEATURES

- ◆ 8 adjustable angle positions from 0° to 35° in 5° increments to accommodate ab and back exercises
- ◆ 9 adjustable leg roller pads and foot bar positions
- ◆ Non-skid foot bar secures foot placement during exercise
- ◆ Integrated locking pull-pins safely secure frame in place
- ◆ Non-metallic foot covers to protect flooring

## FITNESS TREE

*HF-5962*



### SPECS

**PRODUCT DIMENSIONS (L X W X H)**

44" X 44" X 83" (112 cm X 112 cm X 212 cm)

**PRODUCT WEIGHT**

150 lbs (68 kg)

**MAX EXERCISE WEIGHT**

400 lbs (181 kg)

### FEATURES

- ◆ Perform multiple body weight exercises such as dips, knee raises, pull-ups, leg raises, ab crunches and push ups
- ◆ Upper hand grips for neutral and wide pull up exercises
- ◆ Dual purpose back pad attaches for both vertical knee raise and abdominal exercise positions
- ◆ Dual purpose low handles for footstep and push up exercise positions
- ◆ Angled arm rests offer stable positioning for vertical knee raise exercises

## SQUAT RACK

### HF-5970



## SPECS

### PRODUCT DIMENSIONS (L X W X H)

54" X 70" X 82" (137 cm X 178 cm X 207 cm)

### PRODUCT WEIGHT

123 lbs (56 kg)

### MAX EXERCISE WEIGHT

600 lbs (272 kg)

## FEATURES

- ◆ Racking system provides 8 positions for Olympic Bar
- ◆ Upgraded racks with polyurethane covers to eliminate noise and protect the bar and machine
- ◆ Upgraded rack-out tiers with polyurethane covers to eliminate noise and protect the bar and machine
- ◆ Non-metallic foot covers to protect
- ◆ Pull-up bar for wide or narrow pull up exercises

## LEG EXTENSION / CURL ATTACHMENT

**HF-OPT-4000-01**



### SPECS

**PRODUCT DIMENSIONS (L X W X H)**

18" X 17" X 18" (46 cm X 44 cm X 46 cm)

**PRODUCT WEIGHT**

15.2 lbs (6.90 kg)

### FEATURES

- ◆ Optional attachment for the following products:
  - HF-5165 7-Position F.I.D. Bench
  - HF-5170 7-Position F.I.D. Olympic Bench
  - Can be stored in HF-OPT-5000-03 (sold separately)

## PREACHER CURL ATTACHMENT

**HF-OPT-4000-02**



### SPECS

**PRODUCT DIMENSIONS (L X W X H)**

20" X 17" X 34" (51 cm X 44 cm X 86 cm)

**PRODUCT WEIGHT**

19 lbs (8 kg)

### FEATURES

- ◆ Optional attachment for the following products:

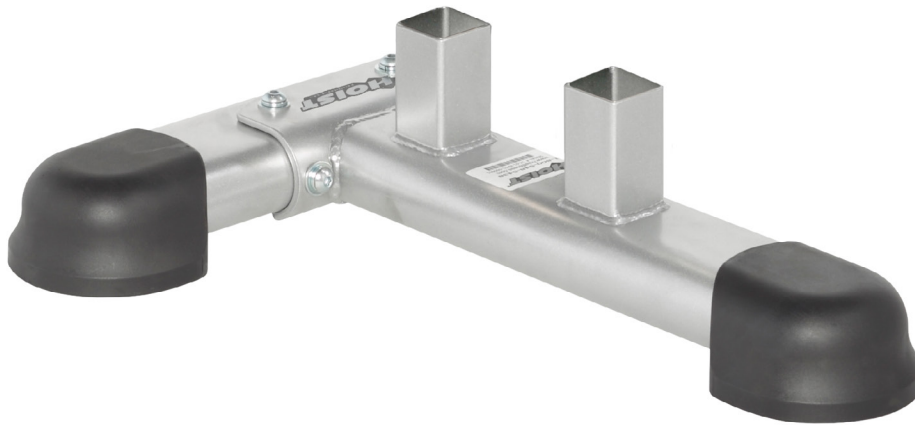
HF-5165 7-Position F.I.D. Bench

HF-5170 7-Position F.I.D.  
Olympic Bench

Can be stored in HF-  
OPT-5000-03 (sold separately)

## ACCESSORY STAND

**HF-OPT-4000-03**



## SPECS

**PRODUCT DIMENSIONS (L X W X H)**

22" X 21" X 6" (56 cm X 52 cm X 14 cm)

**PRODUCT WEIGHT**

12 lbs (5 kg)

## FEATURES

- ◆ Optional Storage Stand for the following products:

HF-5165 7-Position F.I.D. Bench

HF-5170 7-Position F.I.D.  
Olympic Bench

## RACK OUT SAFETY TIERS

**HF-OPT-4000-04**



### SPECS

**PRODUCT DIMENSIONS (L X W X H) (PER TIER)**

16" X 4" X 11" (42 cm X 11 cm X 28 cm)

**PRODUCT WEIGHT (PER TIER)**

7 lbs (3 kg)

### FEATURES

- ◆ One pair of polyurethane padded Safety Tiers. Optional attachment for the following products:

HF-5170 7-Position F.I.D. Olympic Bench

HF-5970 Squat Rack



# STANDARD COLORS

*ROC-IT (RS, RPL)  
COMMERCIAL FREEWEIGHTS (CF)  
COMMERCIAL MULTI JUNGLE (CMJ)  
CLUB LINE (CL)*

## FRAME

- Platinum
- White
- Matte Black

## UPHOLSTERY

- |                              |                                |                             |                           |                                   |                            |
|------------------------------|--------------------------------|-----------------------------|---------------------------|-----------------------------------|----------------------------|
| <b>Black</b><br>OLY-115      | <b>Slate Gray</b><br>OLY-185   | <b>Dove Gray</b><br>OLY-120 | <b>Sky Blue</b><br>US 516 | <b>Royal Blue</b><br>OLY-190      | <b>Navy</b><br>NAVY SR-302 |
| <b>Blue Ridge</b><br>OLY-125 | <b>Hunter Green</b><br>OLY-155 | <b>Suede</b><br>46848300    | <b>Wheat</b><br>36349900  | <b>American Beauty</b><br>OLY-130 | <b>Burgundy</b><br>OLY-105 |

CUSTOM COLORS AVAILABLE UPON REQUEST CONTACT US FOR PRICING AND LEAD TIMES

## HOIST DUAL SERIES (HD)

*MOTION CAGE (MC, MCS)  
PERFORMANCE SERIES (PS)*

## FRAME

- Platinum
- White
- Matte Black

## UPHOLSTERY

- Black  
OLY-115

## FRAME

- Platinum
- Matte Black

## SUB FRAME

- Black

CUSTOM COLORS AVAILABLE UPON REQUEST CONTACT US FOR PRICING AND LEAD TIMES

## HOIST LIGHT COMMERCIAL/ HOME FREEWEIGHTS (HF) H4400 & H2200

## FRAME

- Platinum

## UPHOLSTERY

- Black  
OLY-115

NO CUSTOM COLORS AVAILABLE



# CONSUMER/LIGHT COMMERCIAL

## FULL SPECS

PRODUCT NAME	LENGTH	WIDTH	HEIGHT	WEIGHT	
HF-4145	FOLDING MULTI-POSITION WORKOUT BENCH	"52.50" (133 CM) / *50.00" (127 CM)"	17.25" (44 CM)	40.75" (104 CM) / *7.75" (20 CM)	53 LBS (24 KG)
HF-4263	ADJUSTABLE AB BACK HYPER BENCH	"38.75" (98 CM) / *45.50" (116 CM)"	17.50" (44 CM)	34.00" (86 CM) / *11.75" (30 CM)	52 LBS (24 KG)
HF-4357	LEG PRESS / HACK COMBO	83.25" (212 CM)	30.50" (77 CM)	56.50" (144 CM)	488 LBS (221 KG)
HF-4550	PREACHER CURL	42.50" (108 CM)	31.00" (79 CM)	34.75" (88 CM)	71 LBS (32 KG)
HF-5163	FLAT BENCH	48.60" (123 CM)	22.60" (57.4 CM)	15.60" (40 CM)	31 LBS (14 KG)
HF-5165	7-POSITION F.I.D BENCH	65.50" (166 CM)	25.00" (64 CM)	47.00" (119 CM)	77 LBS (35 KG)
HF-5167	7-POSITION FOLDING F.I.D. BENCH	"54.50" (138 CM) / *20.75" (53 CM)"	22.50" (57 CM)	37.50" (95 CM) / *21.00" (53 CM)	63 LBS (29 KG)
HF-5170	7-POSITION F.I.D. OLYMPIC BENCH	80.25" (204 CM)	50.75" (129 CM)	70.00" (178 CM)	147 LBS (67 KG)
HF-5264	ADJUSTABLE AB BENCH	57.50" (146 CM)	28.07" (71 CM)	53.49" (136 CM)	59 LBS (27 KG)
HF-5444	OLYMPIC WEIGHT TREE	24.50" (62 CM)	20.50" (52 CM)	44.30" (113 CM)	33 LBS (15 KG)
HF-5459	5 PAIR VERTICAL DUMBBELL RACK	19.30" (49 CM)	17.30" (44 CM)	43.50" (111 CM)	44 LBS (20 KG)
HF-5460	8 PAIR VERTICAL DUMBBELL RACK	19.30" (49 CM)	17.30" (44 CM)	51.70" (131 CM)	51 LBS (23 KG)
HF-5461-36	36" HORIZONTAL DUMBBELL RACK (2-TIER)	43.00" (109 CM)	24.50" (62 CM)	36.00" (91 CM)	84 LBS (38 KG)
HF-5461-48	48" HORIZONTAL DUMBBELL RACK (2-TIER)	55.00" (140 CM)	24.50" (62 CM)	36.00" (91 CM)	99.00 LBS (45 KG)
HF-5461-60	60" HORIZONTAL DUMBBELL RACK (2-TIER)	67.00" (170 CM)	24.50" (62 CM)	36.00" (91 CM)	115 LBS (52 KG)



# CONSUMER/LIGHT COMMERCIAL

## FULL SPECS

PRODUCT NAME	LENGTH	WIDTH	HEIGHT	WEIGHT	
HF-5664	AB / BACK ROMAN HYPER	52.50" (133 CM)	31.50" (80 CM)	39.50" (100 CM)	77 LBS (35 KG)
HF-5962	FITNESS TREE	44.00" (112 CM)	44.25" (112 CM)	83.25" (212 CM)	150 LBS (68 KG)
HF-5970	SQUAT RACK	54.00" (137 CM)	70.00" (178 CM)	81.50" (207 CM)	123 LBS (56 KG)
HF-OPT-4000-01	LEG EXTENSION / CURL ATTACHMENT	18.18" (45.72 CM)	17.35" (44.10 CM)	18.07" (45.90 CM)	15.2 LBS (6.90 KG)
HF-OPT-4000-02	PREACHER CURL ATTACHMENT	20.25" (51.44 CM)	17.37" (44.12 CM)	33.61" (85.67 CM)	18.57 LBS (8.42 KG)
HF-OPT-5000-03	ACCESSORY STAND	22.04" (55.98 CM)	20.50" (52.07 CM)	5.51" (14 CM)	11.63 LBS (5.28 KG)
HF-OPT-5000-04	RACK OUT SAFETY TIERS (PER TIER)	16.35" (41.52 CM)	4.39" (11.15 CM)	11.08" (28.14 CM)	7.47 LBS (3.4 KG)



# WARRANTY POLICY

HOIST® Fitness offers one of the best warranty policies in the industry, reaffirming our commitment to quality and customer satisfaction. HOIST® Fitness warranties this product to the original purchaser only. HOIST® Fitness guarantees this product to be free from defects in workmanship and/or materials under normal use or service. **FOR COMPLETE WARRANTY INFORMATION, VISIT [HOISTFITNESS.COM](http://HOISTFITNESS.COM) AND CLICK ON THE “SUPPORT” LINK.** Warranty policy applies to defects from the manufacturer only.

HOIST® Fitness reserves the right to change product specifications, design, and function at any time.

# TRADEMARKS AND PATENTS

HOIST® Fitness products are covered by U.S. Patents, Patents Pending and Trademarks. HOIST is a registered trademark. All Rights Reserved.†

- ◆ HOIST®
- ◆ ACT NOW®
- ◆ CABLE-DRIVEN™
- ◆ CLUB QUALITY GUARANTEED®
- ◆ COMPOSITE MOTION™
- ◆ DUAL ACTION SMITH®
- ◆ EASY GLIDE™
- ◆ EZ-LOC LATCHING MECHANISM™
- ◆ FEEL THE RIDE®
- ◆ GLUTEMASTER®
- ◆ HOIST CLASSIC®
- ◆ QUIK-CHANGE®
- ◆ RADIAL LOC®
- ◆ RIDE ORIENTED CIRCUIT-INTERVAL TRAINING™
- ◆ RIDE ORIENTED CONDITIONING®
- ◆ RIDE ORIENTED CONDITIONING SYSTEM®
- ◆ RIDE ORIENTED CONDITIONING-INTENSITY TRAINING™
- ◆ RIDE ORIENTED XERCISE®
- ◆ ROC®
- ◆ ROCS®
- ◆ ROX®
- ◆ ROC-IT®
- ◆ ROC-ABS®
- ◆ SILENT STEEL®
- ◆ SPLIT WEIGHT CABLING™
- ◆ ULTRA-LITE LIFTING SYSTEM™
- ◆ DUAL SERIES™
- ◆ FLIP-N-DIP®
- ◆ FLIP-N-GRIP®

D427,652, D431,059, D431,615, D437,370, D437,371, D438,267, D439,292, D439,822, D439,943, D440,610,  
 D444,190, D444,518, D446,440, D446,831, D454,604, D455,184, D455,310, D455,803, D456,862, D457,580,  
 D511,726, D513,598, D518,861, D519,585, D519,864, D526,370, D528,023, D528,172, D533,608, D536,046,  
 D539,857, D541,357, D541,358, D541,893, D542,868, D544,050, D545,383, D556,842, D561,276, D569,459,  
 D569,926, D574,448, D574,449, D577,234, D578,584, D579,989, D583,426, D590,032, D746,388, D797,757,  
 D807,446, D807,447, D808,475, D818,547, 5,683,334, 5,733,233, 5,800,321, 5,807,219, 5,916,072, 5,951,444,  
 5,961,428, 5,980,434, 6,004,247, 6,193,635, 6,264,586, 6,319,178, 6,338,701, 6,347,777, 6,409,637, 6,443,878,  
 6,491,606, 6,491,609, 6,497,639, 6,551,226, 6,561,960, 6,579,213, 6,605,022, 6,988,977, 7,052,444, 7,166,066,  
 7,316,634, 7,322,906, 7,322,911, 7,331,911, 7,335,140, 7,361,125, 7,384,381, 7,393,309, 7,749,143, 7,468,024, 7,544,156,  
 7,549,880, 7,549,949, 7,563,209, 7,563,214, 7,594,880, 7,597,655, 7,601,187, 7,641,600, 7,654,938, 7,654,940,  
 7,670,269, 7,713,179, 7,717,832, 7,731,638, 7,749,371, 7,749,372, 7,766,802, 7,806,809, 7,815,555, 7,867,149, 7,878,953,  
 7,901,335, 7,901,337, 7,909,743, 7,938,760, 7,963,890, 7,976,440, 7,981,010, 7,988,603, 7,993,251, 8,002,679,  
 8,007,411, 8,021,070, 8,057,368, 8,162,807, 8,172,732, 8,177,693, 8,257,231, 8,308,620, 8,317,665, 8,328,698,  
 8,562,496, 8,702,573, 8,734,304, 8,852,060, 8,870,720, 8,915,667, 8,926,480, 9,017,238, 9,126,081, 9,205,298,  
 9,302,136, 9,440,106, 9,517,379, 9,522,297, 9,604,086, 9,682,276, 9,707,448, 9,808,699, 9,833,656, 9,861,850,  
 9,868,016, 9,925,448, 9,943,721, 9,950,210, 9,968,819, 9,999,797, 10,010,740, 10,101,740, 11,135,475, 11,013,949, 10,780,310,  
 10,737,131, 10,709,922, 10,646,739, 10,639,513, 10,532,244, 10,486,012, 10,426,990, 10,420,985, D857,812, 10,391,352,  
 10,350,445, D852,291, 10,307,630, 10,220,240, WW, D836,733, 10,086,229

† Other Patents Pending