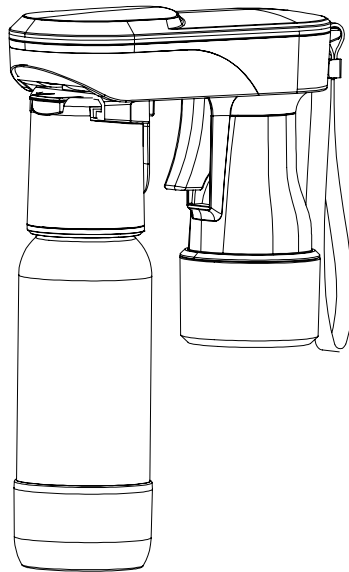


drinkmate®



Spritzer Carbonation System
Model: DM-SPR-420

User Manual
(Ver. 420-000-2A)

Contact Information:

Tel: 1-844-812-6241

Email: support@idrinkproducts.com

Website:

US: www.drinkmate.us

CA: www.drinkmate-canada.com

UK: www.drinkmate.uk

EU: www.drinkmate-eu.com

IMPORTANT SAFEGUARDS

This appliance is intended mainly for portable use with 3 oz CO2 cylinders. An optional accessory stand is available for countertop use, which will accept a larger threaded 60L CO2 cylinder. The CO2 cylinder contains compressed liquid gas with high pressure, please keep the unit out of the reach of small children. Please read the following instructions and warnings before use.

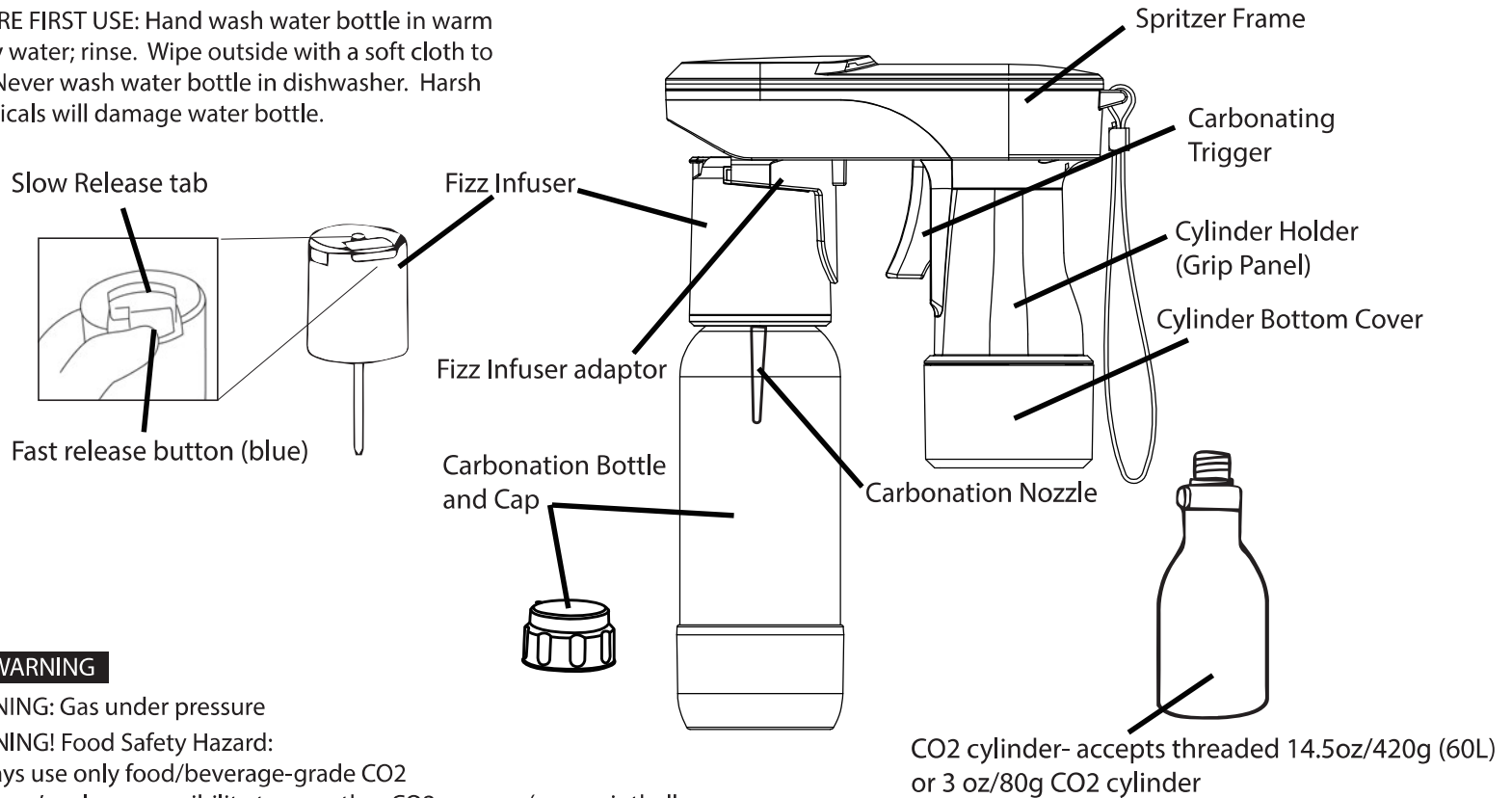
1. DO NOT store any of the parts in a freezer. We also recommend storing bottles in the refrigerator using the bottle cap, not the Fizz Infuser, to avoid any potential icing. Whether indoors or outside, only use the Fizz Infuser with no internal blockage from icing or other materials. If in doubt, thaw it or rinse before use.
2. DO NOT store any parts near or on a stove/oven or other heat source, such as in a heated car.
3. If the CO2 cylinder is colder or warmer than room temperature, it must be gradually brought up to room temperature before use. DO NOT place it in the freezer or on a heat source to accelerate the process.
4. Make sure that the CO2 cylinder and bottle are firmly attached before each use.
5. Check expiration date on the bottle. Do not use an out of date bottle. Do not use bottle if deformed, scratched, severe discolored, or moldy inside. Replacement bottles can be purchased from your retailer or www.idrinkproducts.com.
6. DO NOT transport a unit loaded with a CO2 cylinder and plastic bottle attached at the same time.
7. DO NOT make any modifications or repairs to the unit and accessories. Repairs and modification may be made only by our authorized service personnel.
8. Only use Drinkmate approved accessories, such as bottles, CO2 cylinders and stand. Using other non-approved accessories may not safe, or damage the unit and may VOID your warranty.
9. WARNING! Food Safety Hazard:
 - Always use food/beverage-grade CO2.
 - It is user's sole responsibility if using other CO2 sources (e.g., paintball, medical grade).
10. Be aware of the foaming rate of the beverage you are carbonating. If the beverage starts generating a lot of foam, slow down your carbonation or pressure release rate and wait for the foam to settle.

11. DO NOT remove Fizz Infuser while bottle contents are pressurized. Always press the blue button to finalize the pressure release process before removing the Fizz Infuser.
12. Always hold the unit level and stable when using it.
13. Use the nozzle protector tube to protect the nozzle tip when storing the unit in a drawer, carrying case, or mixed with other stuff.
14. DO NOT submerge or rinse the Spritzer frame with water and do not clean while in operation.
15. Only use the unit when a filled bottle is inserted. Never attempt to fill an empty bottle with CO2.
16. Do not force the Fizz Infuser into its adaptor if the adaptor is not oriented at 45 degrees outward. The white injecting tip on maker frame might be damaged if forced in. (pull the back of the adaptor outward by hand to cover the white plastic tip so you can slide the Fizz Infuser in).
17. Do not turn the Fizz Infuser in its operational position (perpendicular to the top frame) if the Fizz Infuser is not FULLY inserted to frame. The injecting tip may otherwise be damaged.
18. Hand wash bottle with soap and warm water. Never place in dishwasher. Never use brushes, abrasives, or chemical cleaners.
19. When operating, do not pull the trigger more than 3 seconds each time. Stop adding CO2 if you hear the saturation release sound.
20. WARNING: Explosion Hazard. Always store CO2 cylinders in a dry place, away from any type of heat exposure. Exposing to heat can cause cylinder pressure to build up and release CO2 gas unexpectedly.
21. WARNING: Cold-burn Hazard. To prevent frostbite, DO NOT touch CO2 cylinder if CO2 is being released; wait until all CO2 is discharged and carbonator has come to room temperature
22. The water bottle rinse and storage temperature range is MAX: +40°C/+120°F, MIN: +1°C/+34°F. Never store outside this range.
23. Use the unit to carbonate pulp free and cold drinks only. Soak the Fizz Infuser in water to do deep clean from time to time to prevent possible clogs of the valve system.

SAVE THESE INSTRUCTIONS!

Parts and Features

BEFORE FIRST USE: Hand wash water bottle in warm soapy water; rinse. Wipe outside with a soft cloth to dry. Never wash water bottle in dishwasher. Harsh chemicals will damage water bottle.



⚠ WARNING

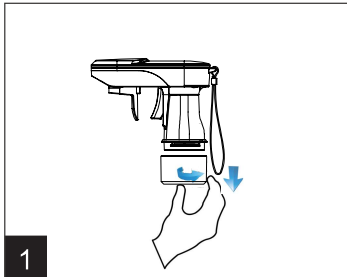
WARNING: Gas under pressure

WARNING! Food Safety Hazard:

- Always use only food/beverage-grade CO2
- It is user's sole responsibility to use other CO2 sources (e.g., paintball, medical grade), uncertified cylinder brand.

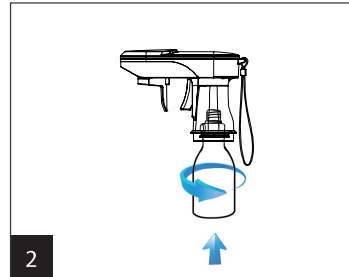
HOW TO USE

NOTE: Only use authorized and suggested CO2 cylinders and bottles. Never carbonate if drink bottle is empty or not completely attached.



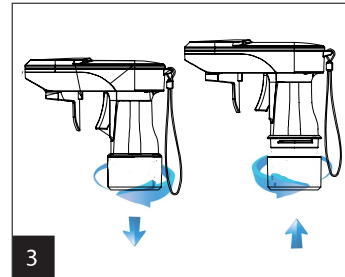
1

Remove the cylinder bottom cover - remove the Pin Protector inside (For first time use only. Only on some models)



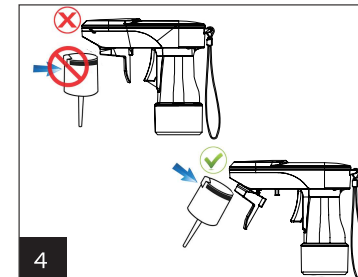
2

Install CO2 cylinder - remove the seal for new cylinder, insert threaded part into unit receptacle and hand-tighten.



3

Replace cylinder bottom cover to enclose 3 oz cylinder -leave it open if using a 14.5oz (60L) cylinder, or sitting the unit onto the optional accessory stand for counter-top use.



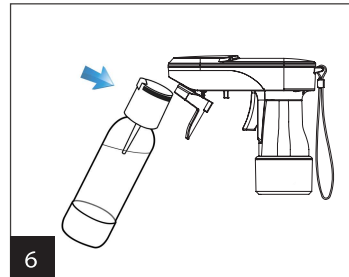
4

Slide out the Fizz Infuser - always make sure the Fizz Infuser adapter is in forward position and the white plastic tip does not block the way when sliding the Fizz Infuser in and out.



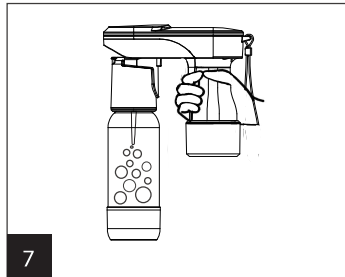
5

Add cold beverage into the bottle and connect it to Fizz Infuser - No hot or pulp liquids. Fill up to the Max. fill line. Connect both by holding the bottle and turning the Fizz Infuser clock-wise a quarter turn to lock.



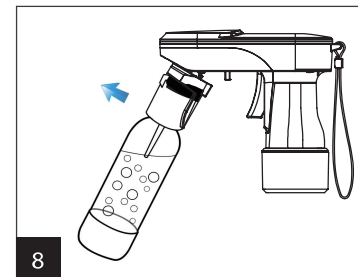
6

Slide in the Fizz Infuser - again, make sure the white plastic tip is not blocking the way. Push the Fizz Infuser and adapter to carbonating position (perpendicular to the frame).



7

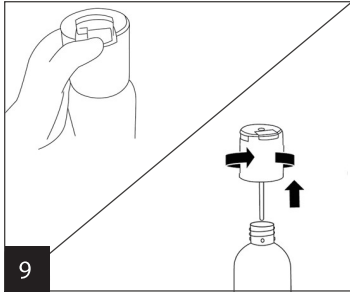
Pull the Trigger to carbonate - normally 2 - 3 times at one second each time. Maximum carbonation is reached if you hear a discharge whooshing sound and pressure release.



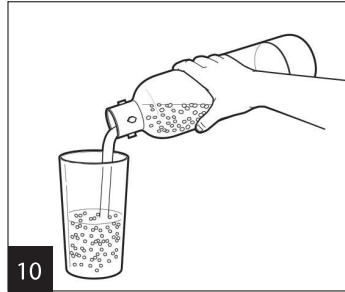
8

Slide out the Fizz Infuser with bottle again - gently shake the carbonated bottle before release. This will increase absorption of CO2 into the beverage.

Continue to How to Use



9
Release pressure – Lift the Slow Release tab and Fast Release button to discharge pressure. If the foam level is too high, let bottle set for awhile before discharging. To be safe, always finalize the pressure release process by depressing the blue Fast Release button.



10
Enjoy your drink – Turn the Fizz Infuser counter-clockwise to disconnect from the bottle. Enjoy the sparkling drink. Use the bottle cap to store it in the fridge or take it on the go.

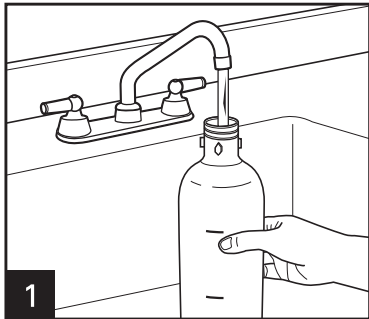
- Use the coldest beverages possible, 33°-42°F (0.5°-5.5°C)
- visit www.idrinkproducts.com for more tips and recipes.

WARNING! Pulped beverages may clog the pressure release valve!

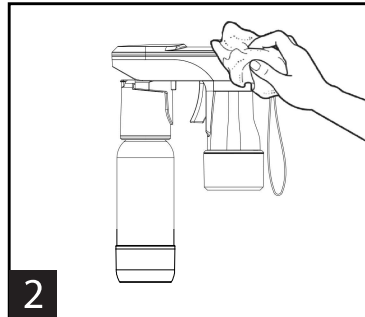
Tips for using the Drinkmate - Spritzer:

- For high foaming beverages like beer, half-fill the bottle. Then carbonate using short bursts (~0.25 sec.) allowing the bubbles to settle between triggers.
- For low foaming beverages, a longer triggering time can be used. Learn from experience how to limit foam from overflowing.
- Experiment to find your preferred carbonation level for different drinks. Stop carbonating when a discharge whooshing sound is heard to save CO₂.
- For water or low sugar beverages, use the Fast Release button directly to save discharging time.
- Before discharging the pressure, gently shake the bottle with Fizz Infuser on to allow a higher CO₂ absorption into your beverage for better taste.
- Drinkmate Spritzer can also use larger 60L (14.5oz/420g) CO₂ cylinders. An optional accessory stand is available converting it countertop use.
- CO₂ cylinder exchange program from Drinkmate: Empty CO₂ cylinders may be exchanged for full ones at any participating retailer or online. For more information, please email: CO2@idrinkproducts.com, or use the phone Number listed on manual.
- If using the larger 14.5oz CO₂ (60L) cylinder with Spritzer in hand-held mode, be very careful not to damage the cylinder holder and frame due to the extended length. We suggest buying the optional accessory stand so you can adapt the Spritzer for countertop use with the larger CO₂ cylinder. Please check www.idrinkproducts.com for more accessory details.

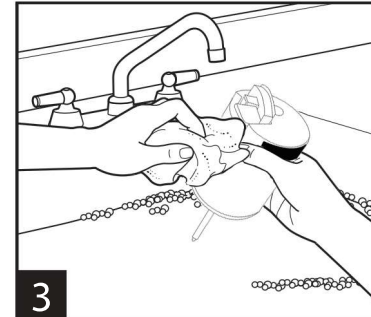
CARE AND CLEANING



1 Rinse the water bottle with clean water after each use. The bottom cap on all DrinkMate bottles is removable for cleaning by twisting off.



2 To clean the Spritzer Frame, wipe with a damp cloth. Do not immerse the Frame unit in water. Do not use any solvents or abrasive cleaners, since this could damage the surface.



3 Make sure to rinse the Fizz Infuser after every use under running water. This is especially important if foam came out of the valve during use.

WARNING! Carbonation bottles are under high pressure during operation. Damaged and outdated bottles can fail during carbonation. Hand wash with soap and warm water. Never place in dishwasher. Never use brushes, abrasives, or chemical cleaners. Replace water bottle if it is scratched, deformed, or beyond expiration date.

Troubleshooting

PROBLEM	PROBABLE CAUSE/SOLUTION
No Carbonation	<ul style="list-style-type: none">• Check if CO2 cylinder is empty. Use a brand new cylinder.• Cylinder may be too cold. Wait until cylinder reaches room temperature.• Beverage is too warm. Use cooler liquid, the colder the better.• Check to see if CO2 cylinder is properly installed into the receptacle. If loose, it will not activate properly.
Slight Carbonation	<ul style="list-style-type: none">• CO2 is not mixed well with beverage. Allow 10 seconds after CO2 is released into beverage to complete mixing before releasing pressure.• The beverage contains lots of sugar which tends to absorb more CO2 than water. Shake the bottle before releasing pressure, and add one or two extra doses of CO2.• Beverage is too warm. Use cooler liquid, the colder the better.• Pull the carbonation trigger for a longer period of time.
It's difficult to remove the water bottle from the Fizz Infuser unit after carbonating.	<ul style="list-style-type: none">• Excess CO2 has not been released. Lift the pressure release tab on the Fizz Infuser and wait until all the excess CO2 has been released, or push the blue Fast Release button to release all the pressure.
Foam rises too quickly while carbonating or releasing pressure	<ul style="list-style-type: none">• Use shorter carbonation bursts. Every beverage will foam differently. If foam is coming out when you are releasing pressure through the slow release valve, next time you carbonate that beverage: (i) pour in less beverage to leave more room for foam to rise up; (ii) use shorter bursts; (iii) wait longer between each carbonation trigger. This is a machine that allows you to use your imagination to design your own sparkling beverages and learn to make beverages to your liking. The more you use it the more aware you will be as to how to carbonate your favorite drinks.
Not Able to slide the Fizz Infuser all the way in?	<ul style="list-style-type: none">• The Fizz Infuser adapter is in its point down position, so the white injection tip sticks out and is blocking the Fizz Infuser from sliding in.• Pull the adapter forward to about 45 degree so the white injection tip is hidden inside.