

METAL 01



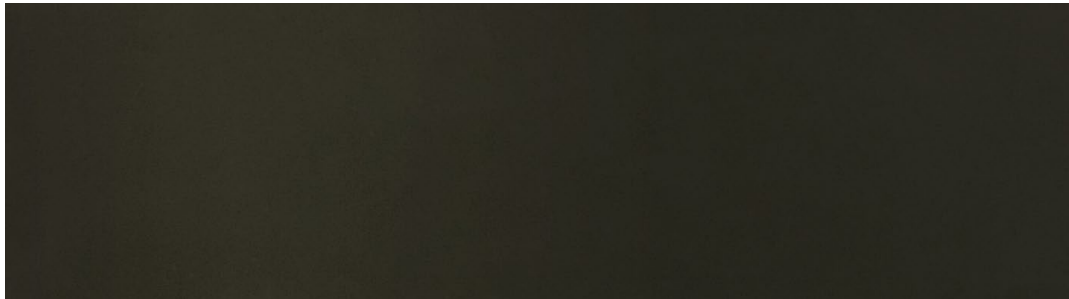
BRUSHED BRASS



MATTE BRASS



LIGHT ANTIQUE BRASS



DARK ANTIQUE BRASS



POLISHED BRASS



POLISHED NICKEL



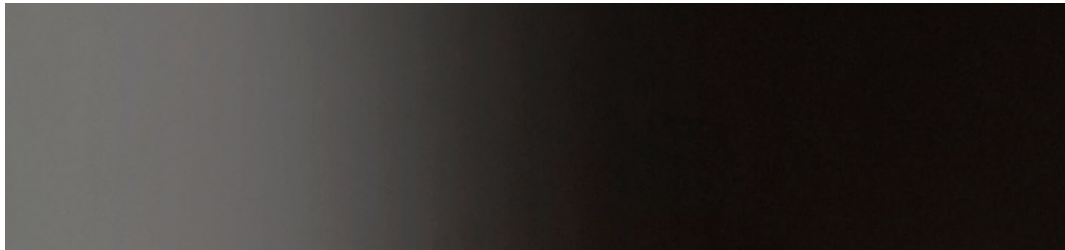
METAL 02



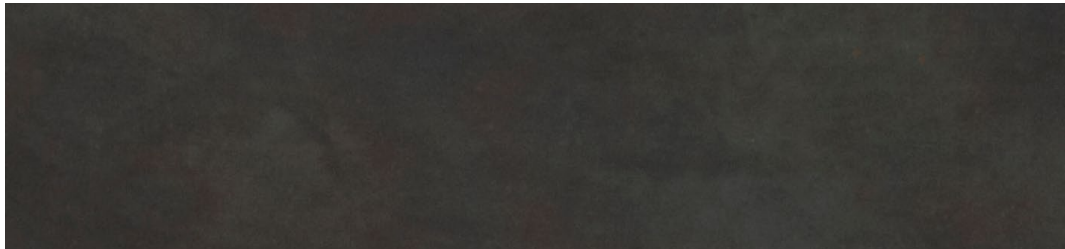
SATIN NICKEL



WHITE POWDER COAT



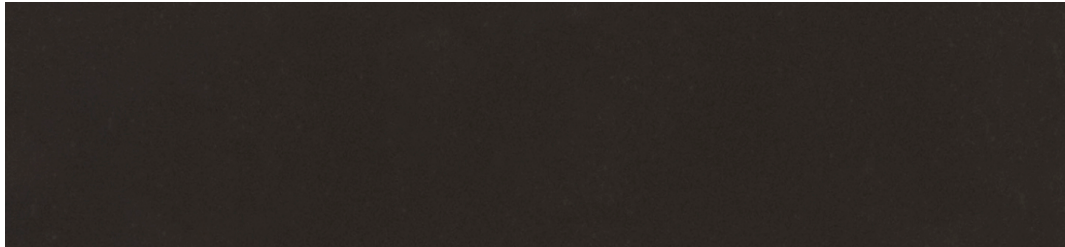
BLACK POWDER COAT



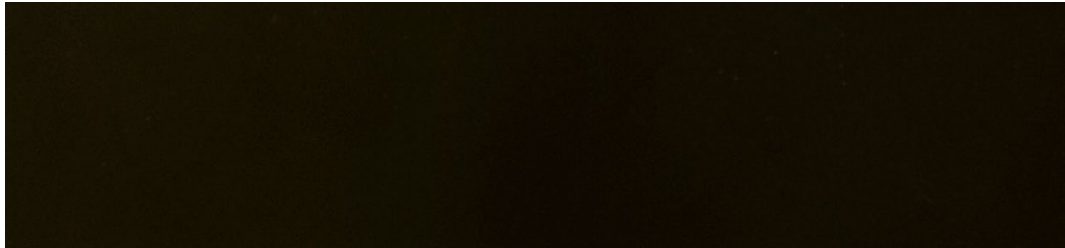
PATINATED STEEL



CLASSIC BRONZE



OIL RUBBED BRONZE



MARINE OIL BRONZE

