

METAL 01



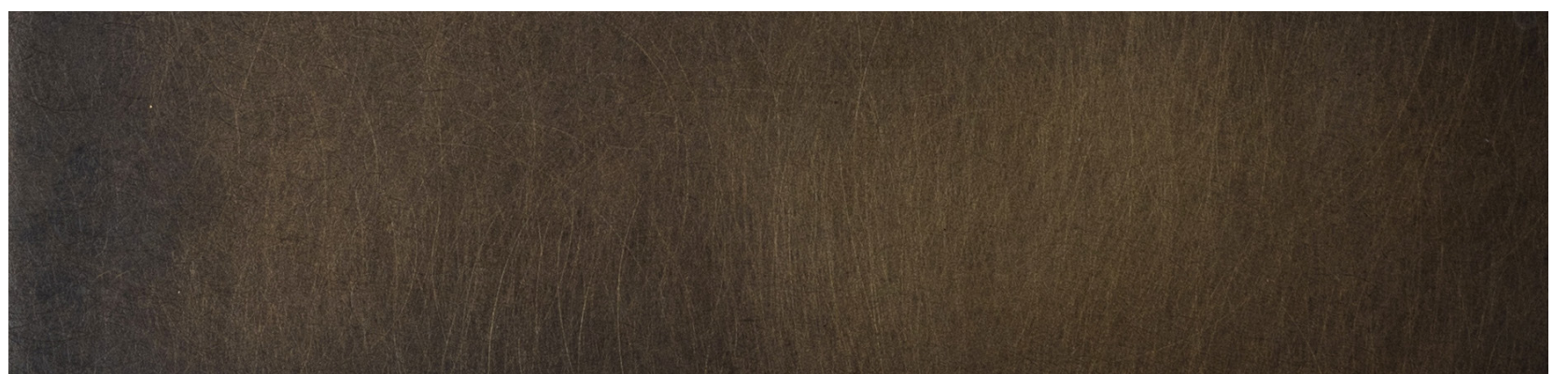
BRUSHED BRASS



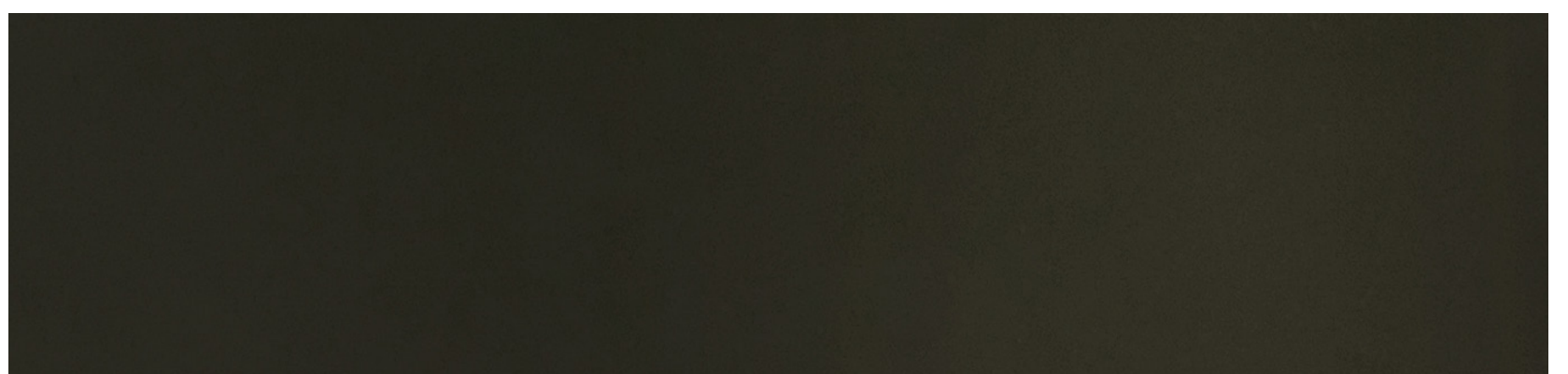
MATTE BRASS



LIGHT ANTIQUE BRASS



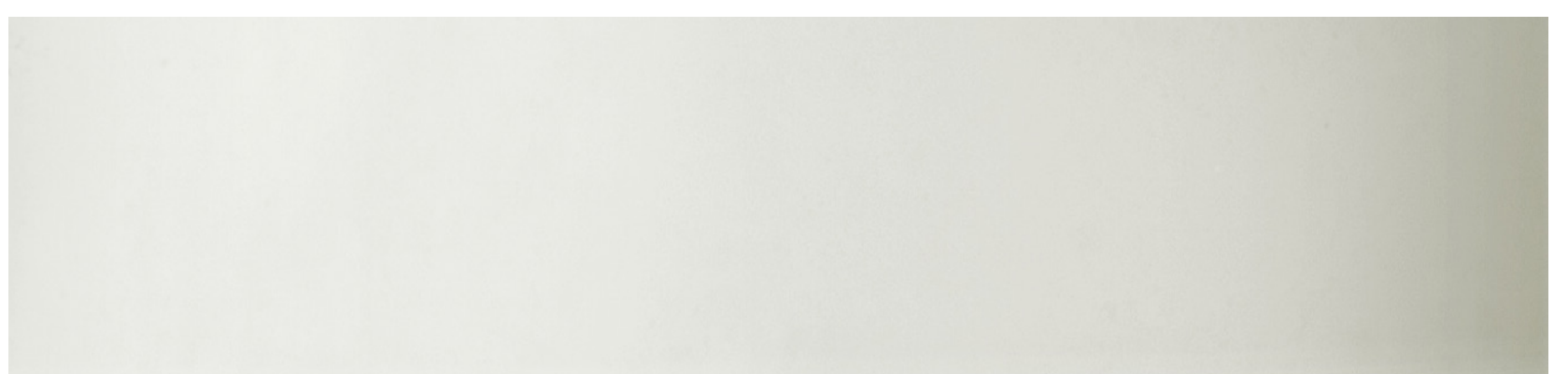
BURNISHED BRASS



DARK ANTIQUE BRASS



POLISHED BRASS



POLISHED NICKEL

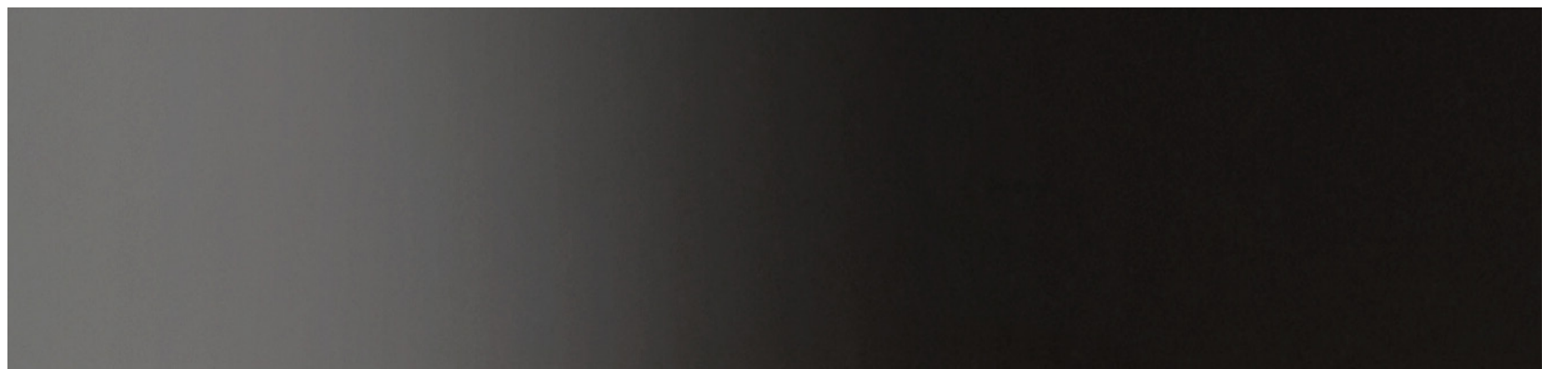
METAL 02



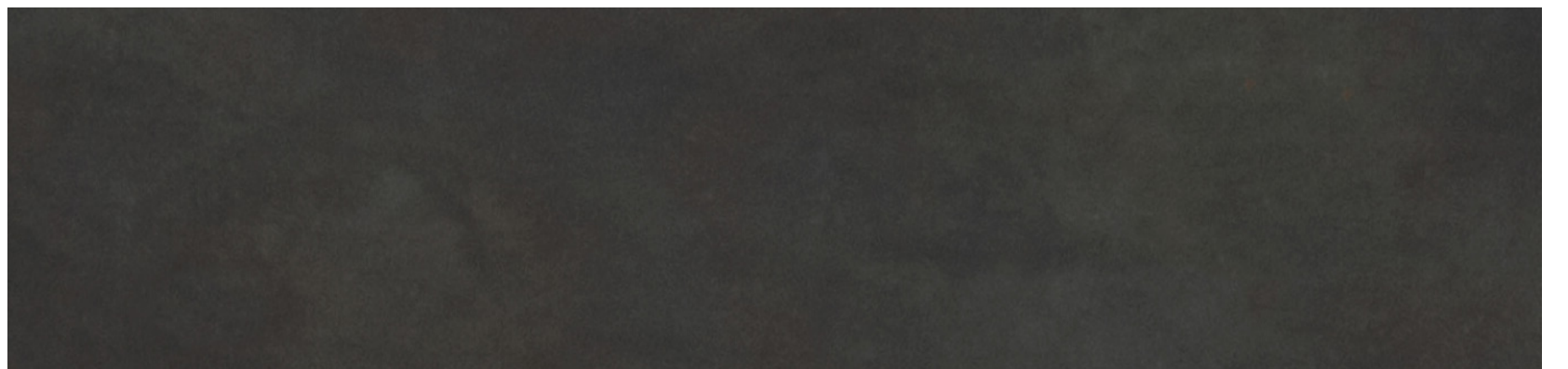
SATIN NICKEL



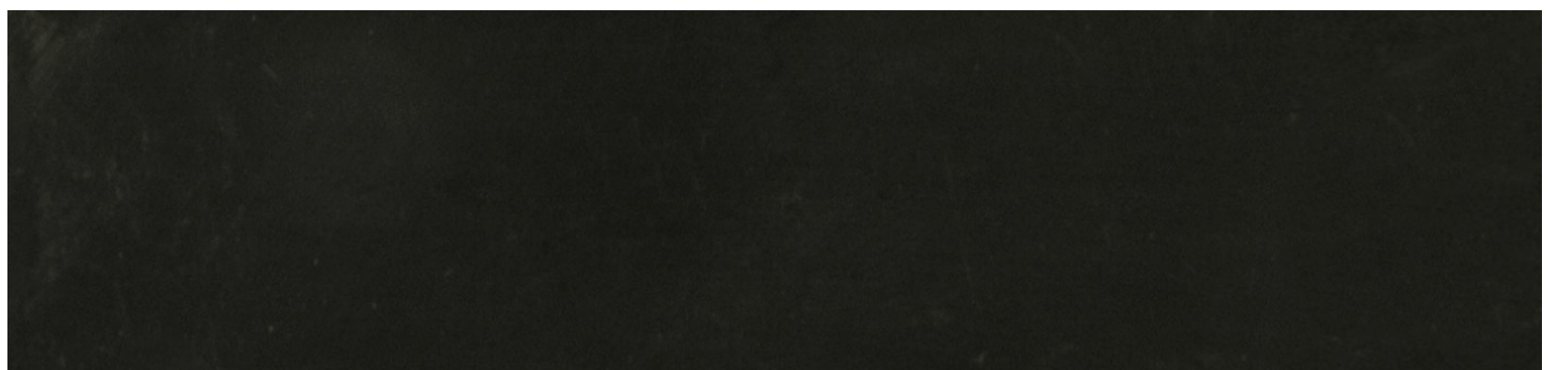
WHITE POWDER COAT



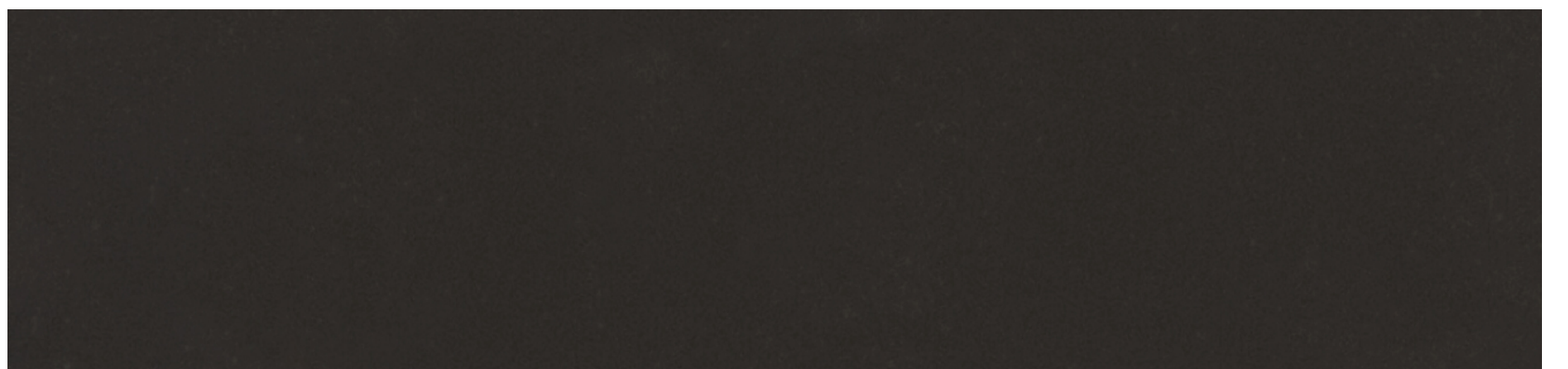
BLACK POWDER COAT



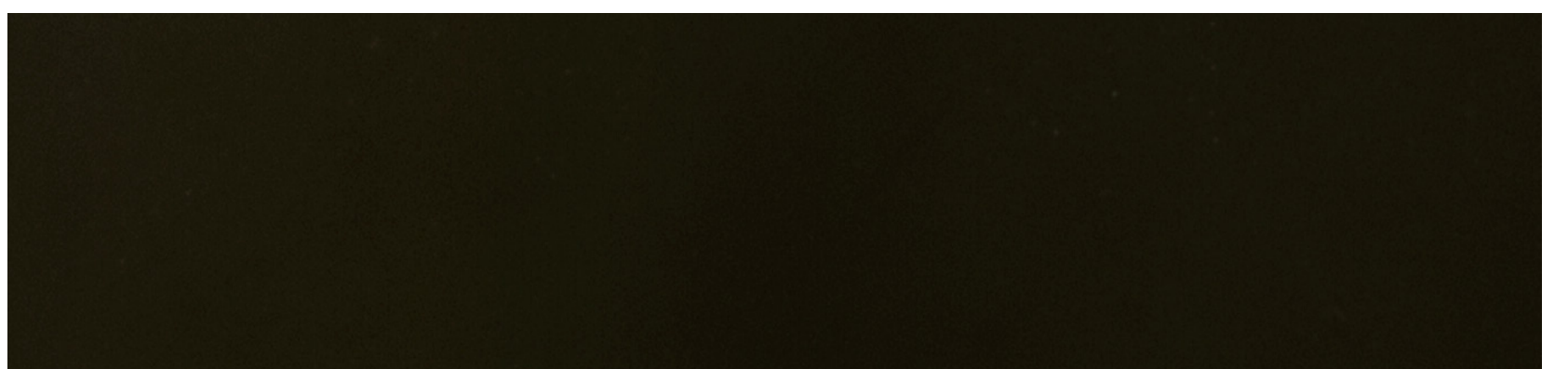
PATINATED STEEL



CLASSIC BRONZE



OIL RUBBED BRONZE



MARINE OIL BRONZE