



# RENO PANEL SHIRT

## S414ML/LL

- Cotton-Rich 55% Cotton, 45% Polyester

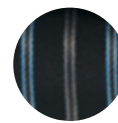
| MENS CLASSIC FIT       | XS   | S  | M    | L  | XL   | 2XL | 3XL  | 4XL | 5XL  |    |
|------------------------|------|----|------|----|------|-----|------|-----|------|----|
| GARMENT 1/2 CHEST (CM) | 53   | 55 | 57   | 59 | 63   | 66  | 70   | 74  | 78   |    |
| LADIES SEMI-FITTED     | 6    | 8  | 10   | 12 | 14   | 16  | 18   | 20  | 22   | 24 |
| GARMENT 1/2 CHEST (CM) | 45.5 | 48 | 50.5 | 53 | 55.5 | 58  | 60.5 | 63  | 65.5 | 68 |



COPPER GOLD



PORT WINE



TEAL BLUE

### UNIQUE FEATURES

- 55% Cotton, for comfort and breathability, is blended with 45% polyester to aid crease resistance and durability - the best of both worlds!
- Yarn-dyed Stripe for longer lasting colour performance
- Unique dobby weave front panel fabric has a slight sheen and surface texture giving a luxury appearance
- Rich jewel-tone colours specially chosen to complement current hotel and restaurant interior trends, but will also add life and accent to any staff uniform
- Plain coloured back and sleeve panels are great free space for adding large logos or motifs
- Mens and Ladies complement each other with subtle style difference
- Long sleeves cover tattoos for a more formal and professional uniform look
- Straight hem designed in such a way that it looks appropriate when worn untucked

### DECORATION

- Recommend bold or complementary coloured embroidery and can also be screen printed. Back screen prints are particularly effective for identifying at events or in store food promotions.

### CO-ORDINATES WITH

- Our Reno Stripe Shirt. Define your staff positions by mixing and matching between. Complete your look with our Biz Separates Trousers or add one of our Hospitality Aprons.

### FITS LIKE

- Mens - Classic fit like S267ML Edge shirt with twin shoulder pleats for movement
- Ladies - Semi-fitted, similar to our S267LT Edge series

### PERFECT FOR

- Hotel and Restaurant Uniforms
- Company or Brand Representatives
- Catering and Food Promotions
- Corporate Events
- Retail or Café Uniforms