

# MEN'S PROFESSIONAL SERIES PANTS

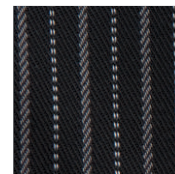
SLIMMER FIT • TWO SLANTED FRONT POCKETS

NEW



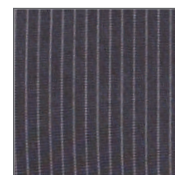
BLK (black)

Item: PSER  
Sizes: XS-3XL



GST (gray stripe)

Item: PSER  
Sizes: XS-3XL



PNS (fine stripe)

Item: PSER  
Sizes: XS-3XL

## DESCRIPTION

The Men's Professional Series Pants are designed to take you from the kitchen to the streets seamlessly. Featuring a new slimmer fit through the legs, belt loops, elastic sides, a zipper fly with a flat drawstring, two slanted front pockets and two back pockets, these pants now come in fine stripe.

## FEATURES

- Yarn-dyed 65/35 poly/cotton
- Slimmer fit
- Built-in flat drawstring
- Belt loops
- Curved waistband with elastic sides
- Button closure with zipper fly
- Two slanted front pockets
- Two back pockets



ETHICAL CLOTHING CO