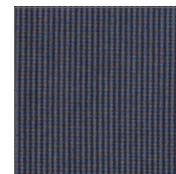


MEN'S ESSENTIAL PRO PANTS

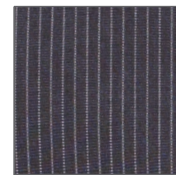
NEW STYLE • BUILT-IN CELL PHONE POCKET



BLK (black)



DGY (deep gray)



PNS (fine stripe)

Item: PS005
Sizes: 28-48

DESCRIPTION

The new Men's Essential Pro Pants are truly the perfect pair of pants, featuring a double-button closure, zipper fly and wide belt loops. These pants also feature two side pockets, two back pockets and a cell phone pocket. Available in black, deep gray, and fine stripe.

FEATURES

- Yarn-dyed poly/cotton
- Double-needle stitching detail
- Flat waistband with wide belt loops
- 2-button closure with zipper fly
- Two side pockets
- Two back patch pockets
- Back inset cell phone pocket

