



ETHICAL CLOTHING CO

# WOMENS REVERSE LAPEL JACKET 60113

Elegant and on-trend styling will make you stand out from the crowd with this jacket. Fully lined, with internal pocket and embroidery access zip.

## DETAILS



### COOL STRETCH

92% Polyester 8% Bamboo Charcoal

Versatile and durable suiting fabric. Breathable fabric perfect for warmer climates keeping you cool and dry. Mechanical stretch for extra comfort and anti-bacterial finish to eliminate odour.

Lining: Stretch Polyester

Fabric care instruction:

- Jackets - Dry clean only 30°C.



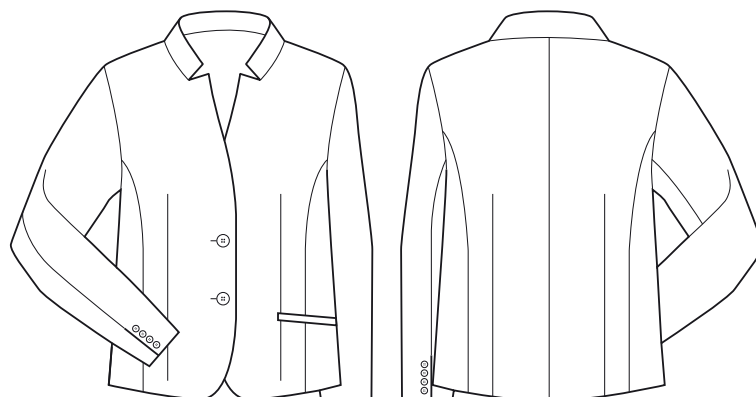
## COLOURS



## GARMENT MEASUREMENTS

SIZE	4	6	8	10	12	14	16	18	20	22	24	26
1/2 BUST (CM)	39.8	41	43.5	46	48.5	51	53.5	57	59.5	62	64.5	67

## SPEC DRAWING



ALL MEASUREMENTS ARE APPROXIMATE AND ARE FOR REFERENCE ONLY. COLOURS ARE REPRODUCED AS CLOSELY AS PRINTING ALLOWS.