



ETHICAL CLOTHING CO



# WOMENS JULIETTE SPOT PRINT LS BLOUSE 44310

A lightweight fabric with high drape and soft hand feel of silk. Easy care and durable, the Juliette blouse also features inverted back pleat tucks.

## DETAILS



### JULIETTE

100% Polyester

A opulent lightweight fabric with high drape and soft hand feel of silk. Easy-care, machine washable with little to no pressing required.



### COLOURS



### GARMENT MEASUREMENTS

SIZE	4	6	8	10	12	14	16	18	20	22	24	26
½ BUST (CM)	44.8	46	48.5	51	53.5	56	58.5	62	64.5	67	69.5	72

### STYLE DETAILS

- Easy fit style
- Concealed placket
- Back inverted pleat featured to provide shape and extra movement
- All seams are double turned for quality in and out
- Longer back length
- Curved front hemline
- Long sleeve with button up cuffs

### MATCH WITH

- All 3 colours can be matched back with the Blaise tops
- For men we recommend matching back with a solid coloured shirt to add contrast to the overall uniform range
  - Aqua: match back with navy and white shirts
  - Moose: match back with white or black shirts
  - Dusty Rose: match back with melon or white shirts

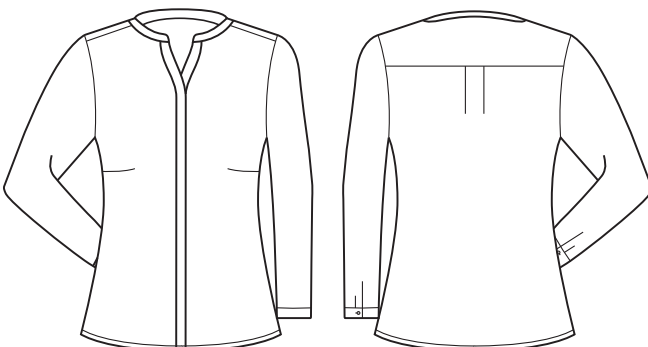
### STYLE TIPS

- Sleeve can be rolled up for a more casual 3/4 look
- Can be worn tucked into pants or worn out

### RECOMMENDED INDUSTRY

- Corporate/office wear

## SPEC DRAWING



ALL MEASUREMENTS ARE APPROXIMATE AND ARE FOR REFERENCE ONLY. COLOURS ARE REPRODUCED AS CLOSELY AS PRINTING ALLOWS.